



AVAILABLE

5850 SKY POND

LOVELAND, COLORADO 80538





Property Highlights

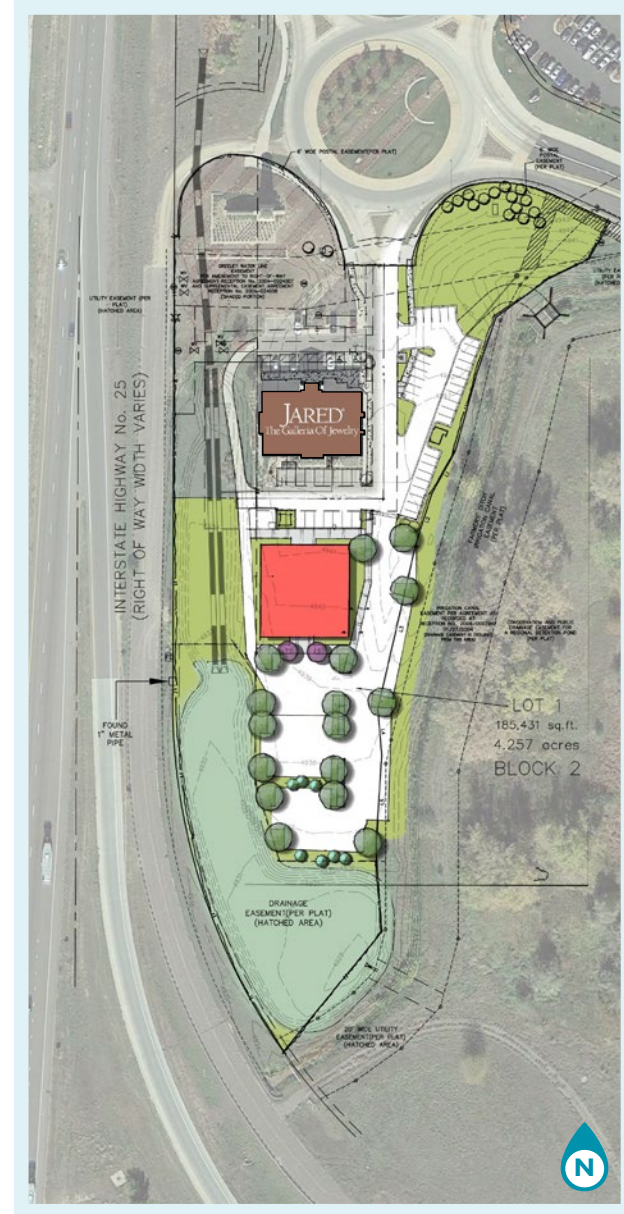
- 5850 Sky Pond: 1.46 Acres
- 4.2 Million SF of office, retail, flex, industrial & hospitality in the Centerra Community
- Adjacent employment generators include the Rangeview Office Campus, UCHealth Medical Center of the Rockies, Nutrien, UNC, Constant Contact, Heska Corporation, Meyer Natural Foods, Safelite, Toddy® Cold Brew System, Bobo's, and Animal Health International
- Annual Growth (2023-2028)
 - 2M 1.9%
 - 5M 1.2%
 - 10M 1.0%

Conceptual Site Plans

Concept A



Concept B



Demographics

CoStar 2023

	2 Miles	5 Miles	10 Miles
2023 Population	10,610	58,315	255,628
2028 Population Proj.	11,627	51,768	268,650
Daytime Employment	12,411	38,373	100,881
Average HH Income	\$131,004	\$108,458	\$111,993

Retailers in 2534 Corridor



CONTACT

AKI PALMER

Cushman & Wakefield | Executive Director
+1 970 267 7727
aki.palmer@cushwake.com

COLE VANMEVEREN

Cushman & Wakefield | Director
+1 970 219 3802
cole.vanmeveren@cushwake.com

772 Whalers Way, Suite 200
Fort Collins, Colorado 80525
+1 970 776 3900
cushmanwakefield.com

PETER PAVLAKIS

Legend Partners
+1 720 529 2990
ppavlakis@legendllp.com

2000 S. Colorado Blvd., Colorado Center
Annex 320, Denver, CO 80222
T +1 720 529 2999
legendllp.com



©2024 Cushman & Wakefield. All rights reserved. The information contained in this communication is strictly confidential. This information has been obtained from sources believed to be reliable but has not been verified. No warranty or representation, express or implied, is made as to the condition of the property (or properties) referenced herein or as to the accuracy or completeness of the information contained herein, and same is submitted subject to errors, omissions, change of price, rental or other conditions, withdrawal without notice, and to any special listing conditions imposed by the property owner(s). Any projections, opinions or estimates are subject to uncertainty and do not signify current or future property performance.