



# FOSSIL CREEK TECH CENTER

3900 - 4096 SANDSHELL DR | FORT WORTH, TX 76137

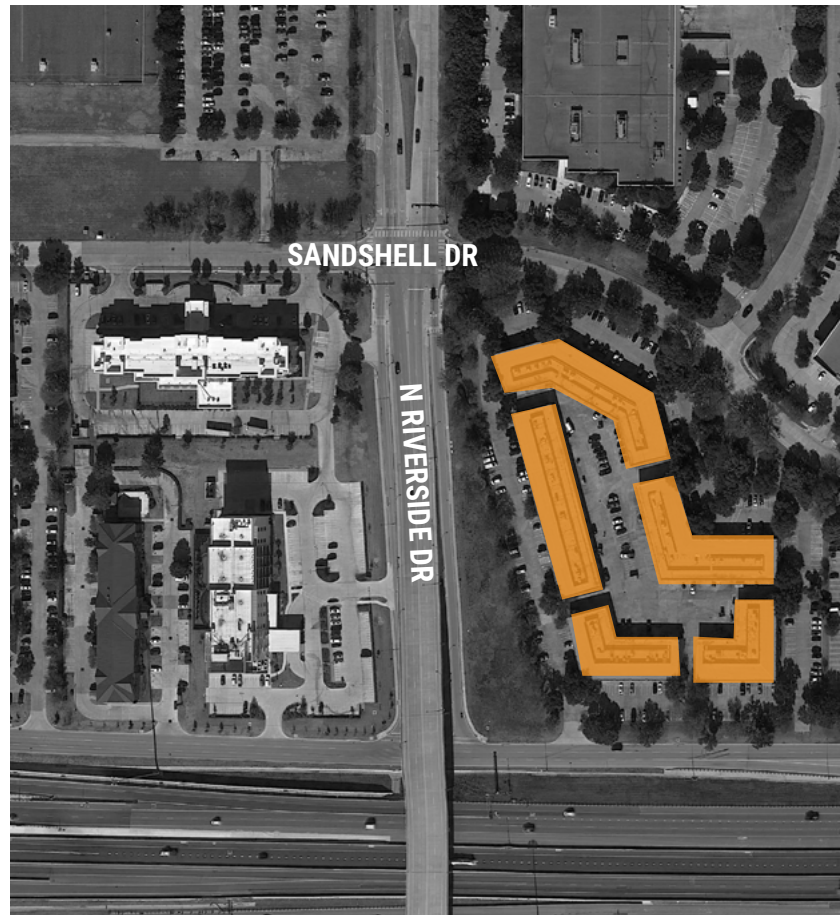
## AVAILABILITY

### MOVE IN READY

- Suite 3906 | 2,155 SF (Available Immediately)
- Suite 3910 | 2,629 SF (Available Immediately)
- Suite 4000 | 9,643 SF (Available Immediately)

## HIGHLIGHTS

- Professional Campus Setting
- Spec Suites Available
- 19.8 Miles from DFW Airport
- Professionally Landscaped
- Ample Parking
- Close to Major Thoroughfares
- Direct Access to I-35 W & Loop 820



BRETT CARLTON  
817.502.8128  
BRETT.CARLTON@STREAMREALTY.COM

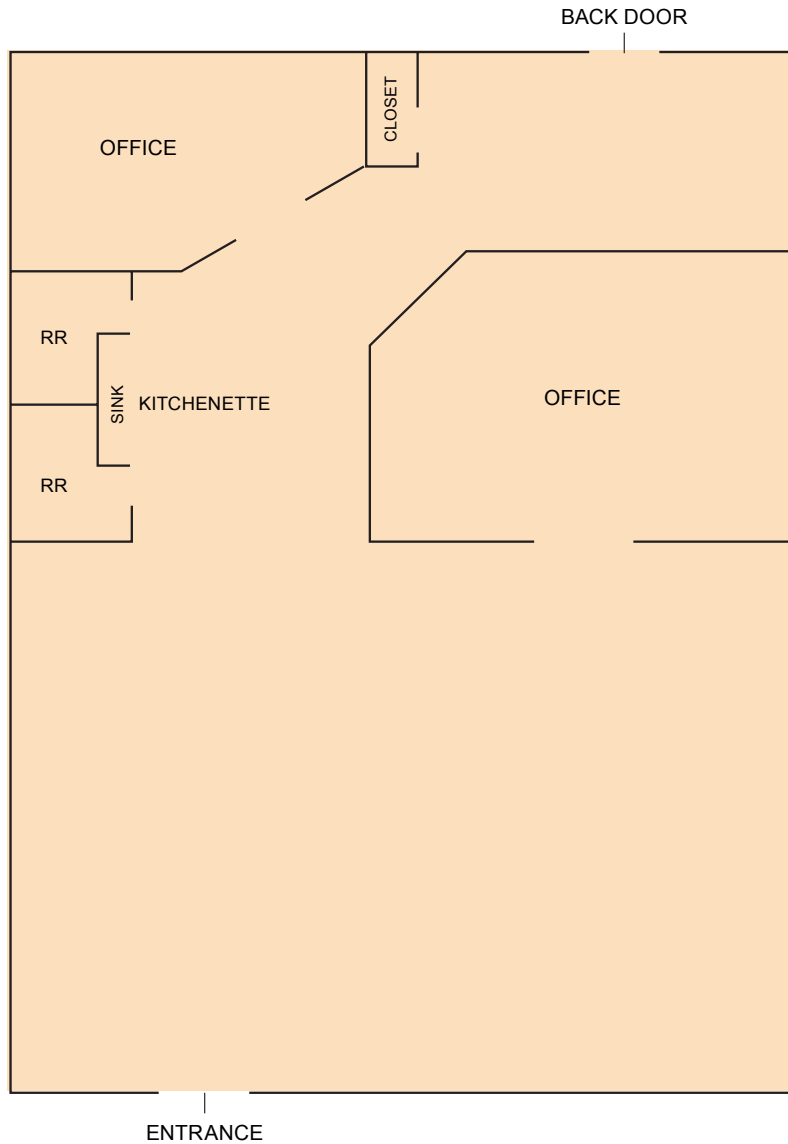
RYAN VAUGHN  
817.415.9825  
RYAN.VAUGHN@STREAMREALTY.COM



# FOSSIL CREEK TECH CENTER

3900 - 4096 SANDSHELL DR | FORT WORTH, TX 76137

## SUITE 3906 | 2,155 SF



### HIGHLIGHTS

- 2,155 SF
- 100% Office
- Large Open Area (For Cubicles or Retail Component)
- 2 Offices
- 2 Restrooms
- 1 Kitchenette

BRETT CARLTON  
817.502.8128  
BRETT.CARLTON@STREAMREALTY.COM

RYAN VAUGHN  
817.415.9825  
RYAN.VAUGHN@STREAMREALTY.COM

  
**STREAM**

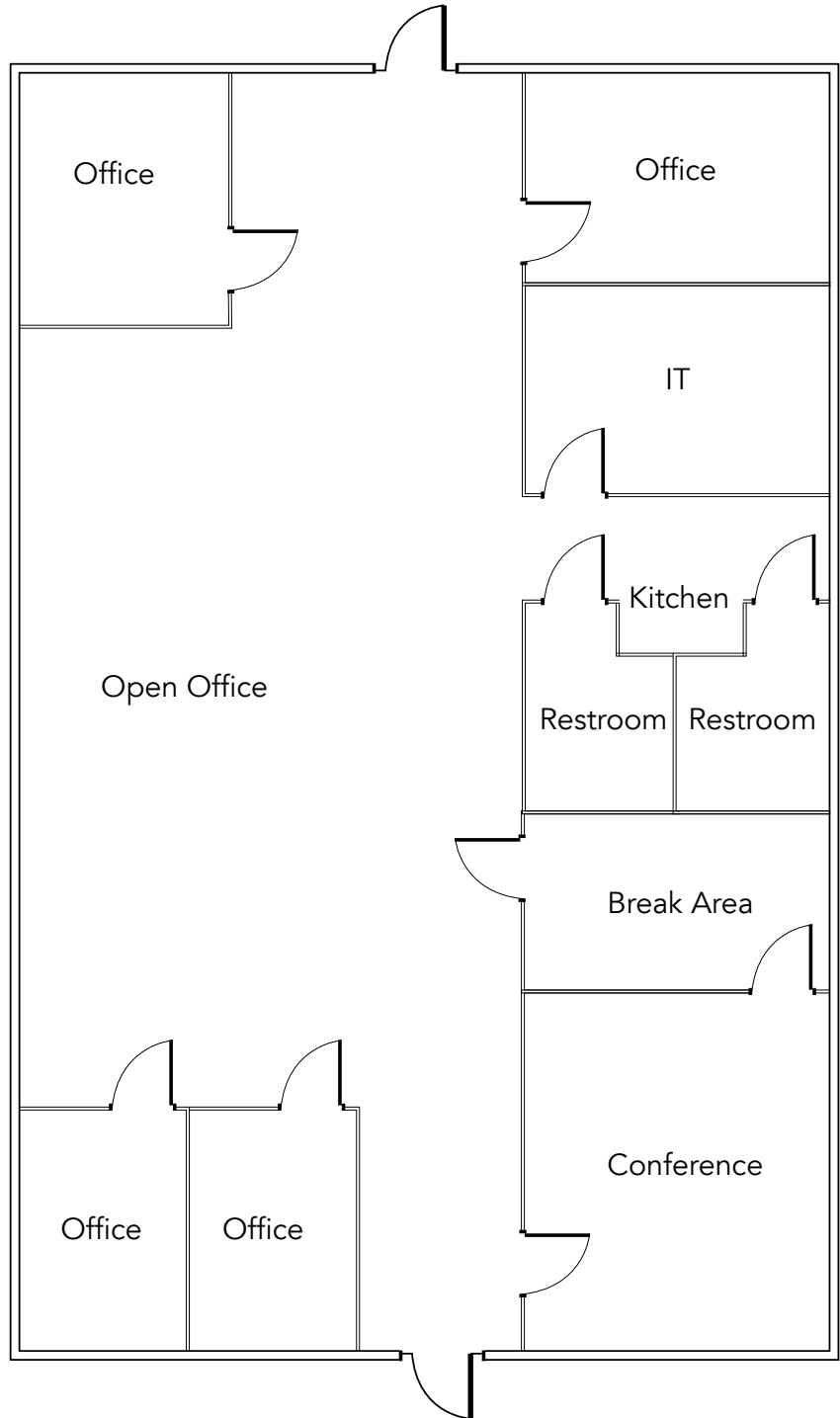
# FOSSIL CREEK TECH CENTER

3900 - 4096 SANDSHELL DR | FORT WORTH, TX 76137

## SUITE 3910 | 2,629 SF

### HIGHLIGHTS

- 100% Office
- Two Restrooms
- Break/Kitchen Area
- Four Private Offices



BRETT CARLTON  
817.502.8128  
BRETT.CARLTON@STREAMREALTY.COM

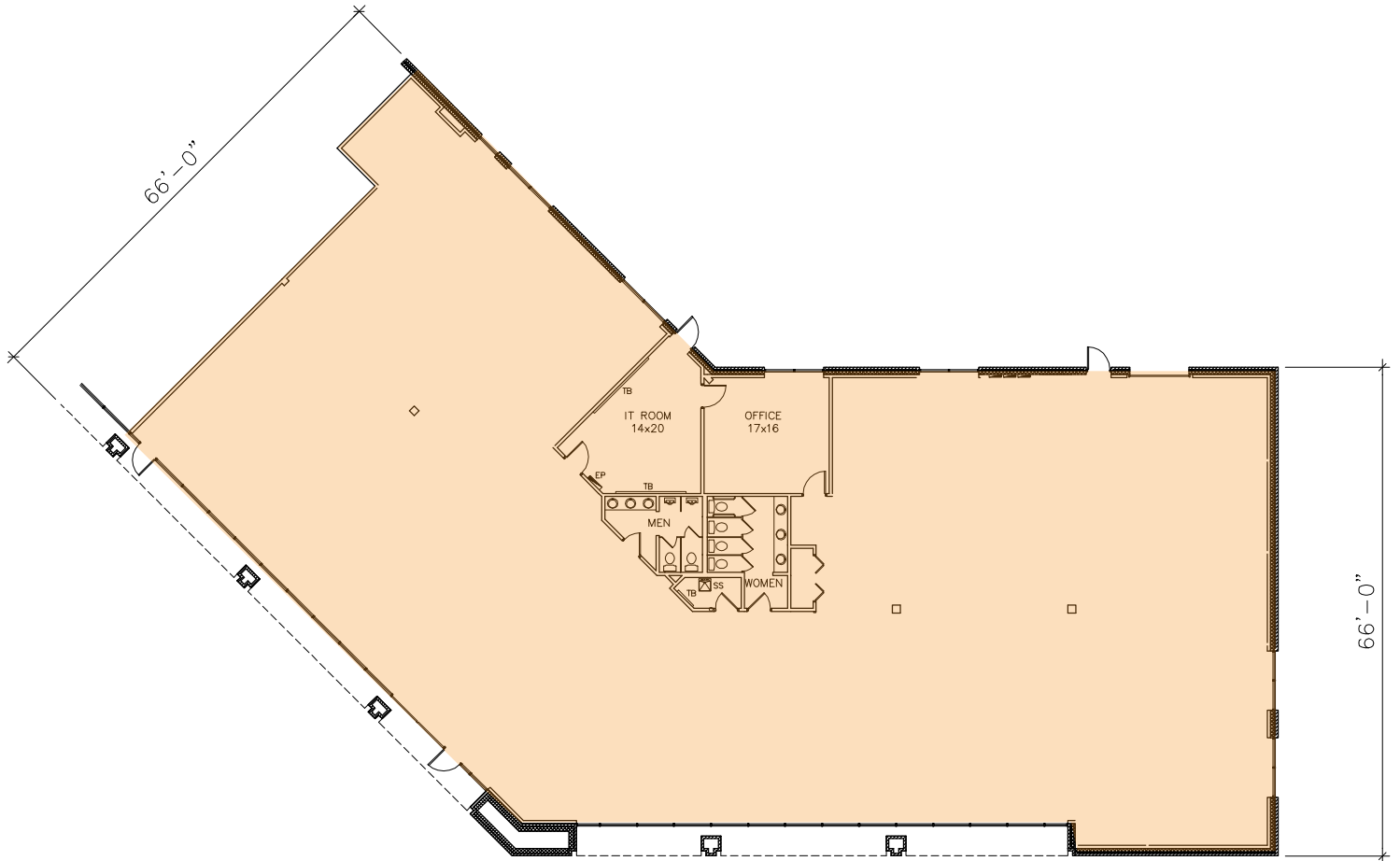
RYAN VAUGHN  
817.415.9825  
RYAN.VAUGHN@STREAMREALTY.COM



# FOSSIL CREEK TECH CENTER

3900 - 4096 SANDSHELL DR | FORT WORTH, TX 76137

## SUITE 4000 | 9,643 SF



### HIGHLIGHTS

- Available Immediately
- 9,643 SF
- Shell Condition
- Men's and Women's Restrooms
- One (1) Roll Up Door

BRETT CARLTON  
817.502.8128  
BRETT.CARLTON@STREAMREALTY.COM

RYAN VAUGHN  
817.415.9825  
RYAN.VAUGHN@STREAMREALTY.COM

  
**STREAM**