

# HUNT

Corporate Services, Inc.

We Facilitate Your Business

## 15,171 Square Feet of Industrial/Flex Space For Lease

Just off the Long Island Expressway, Plainview, NY



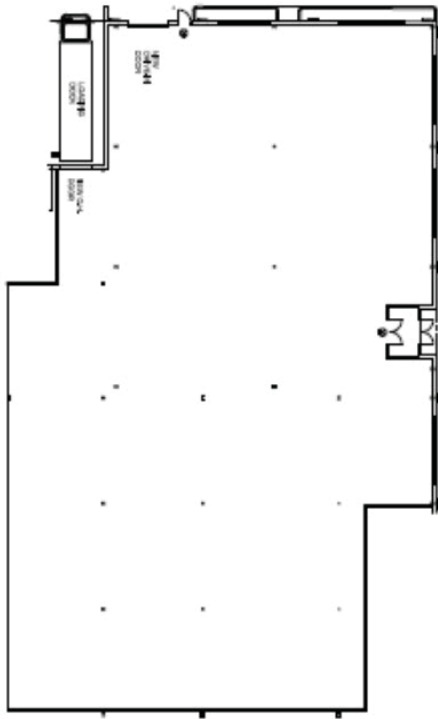
### 55 West Ames Court, Plainview, New York

55 West Ames Court is a 90,025 square foot renovated "flex" building located immediately off the Long Island Expressway in Plainview, New York.



- > 15,171 square feet of industrial/flex space available - Suitable for R&D, pharma or back office
- > Fully air-conditioned, fully sprinklered, sewers, gas heating
- > Office and finished space built to suit
- > Separate entrance and utilities
- > Extensive parking
- > One block off the Long Island Expressway, Exit 46
- > One loading dock and one overhead door

## 55 West Ames Court, Plainview, New York



### Description:

15,171 square feet of industrial/flex space available for lease in a 90,025 square foot building situated on 5.5 acres.

### Location:

One block off the Long Island Expressway, at Exit 46.

### Parking:

Abundant parking adjacent to the suite.

### Occupancy:

Immediate

### Building:

Heat: Gas

Sprinkler: Yes

Air-Conditioning: Yes

Sewers: Yes

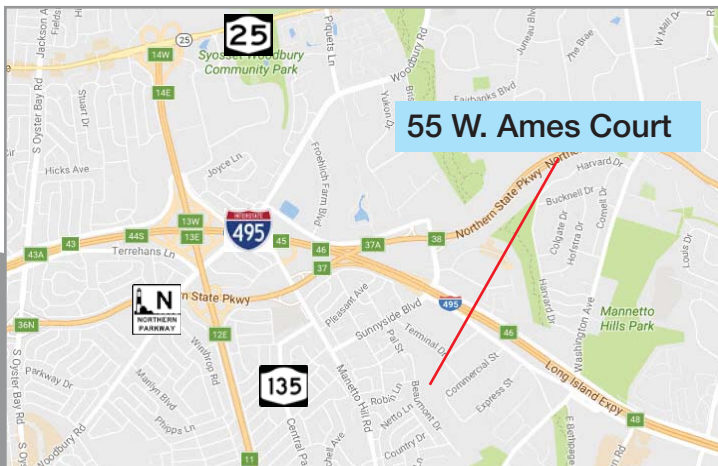
Loading: 1 loading dock  
1 overhead door

### Rental:

\$14.95 per square foot net

### Taxes:

\$5.58 per square foot



### Exclusively Represented By:

David G. Hunt, MCR, CCIM

Licensed Real Estate Broker

### HUNT CORPORATE SERVICES, INC.

185 Express Street, Suite 300

Plainview, NY 11803

Tel: (516) 937-1000 • [www.huntcorp.com](http://www.huntcorp.com)

[dhunt@huntcorp.com](mailto:dhunt@huntcorp.com)