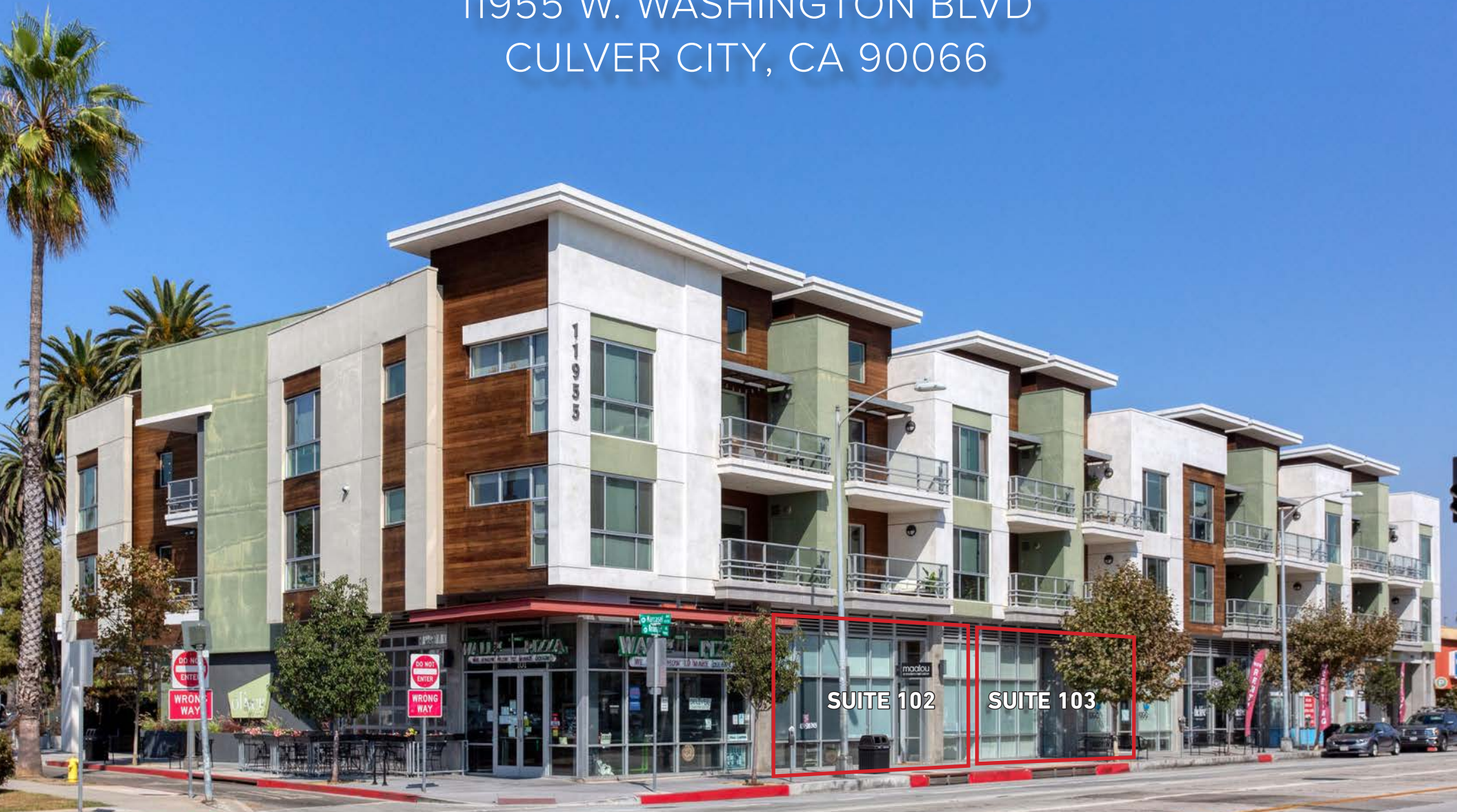


# THE OLIVER

11955 W. WASHINGTON BLVD

CULVER CITY, CA 90066



SUITE 102

SUITE 103



A DIVISION OF  
**LEE & ASSOCIATES**

**± 1,130 - 2,463 SF OF RETAIL/OFFICE  
SPACE AVAILABLE FOR LEASE**



**PREMISES** 11955 W. Washington Blvd, Culver City, CA 90066

**RSF** Suite 102 ± 1,333 SF } ± 2,463 SF  
Suite 103 ± 1,130 SF } Can Be Contiguous Space

**RENT** \$4.25/SF NNN

**TERM** Negotiable

**OCCUPANCY** Immediate

**PARKING** 23 Spaces On Grade/In Common

**FEATURES**

- 15' High Ceilings
- Open Floor Plan
- Mixed Use-Project with 30 Residential Units
- In Suite Restrooms
- Excellent Culver City Location
- Over 170 ft of Storefront

**CONTACT** Spencer Horak | Principal  
310.899.2728  
shorak@leewestla.com  
AGT DRE 01921906

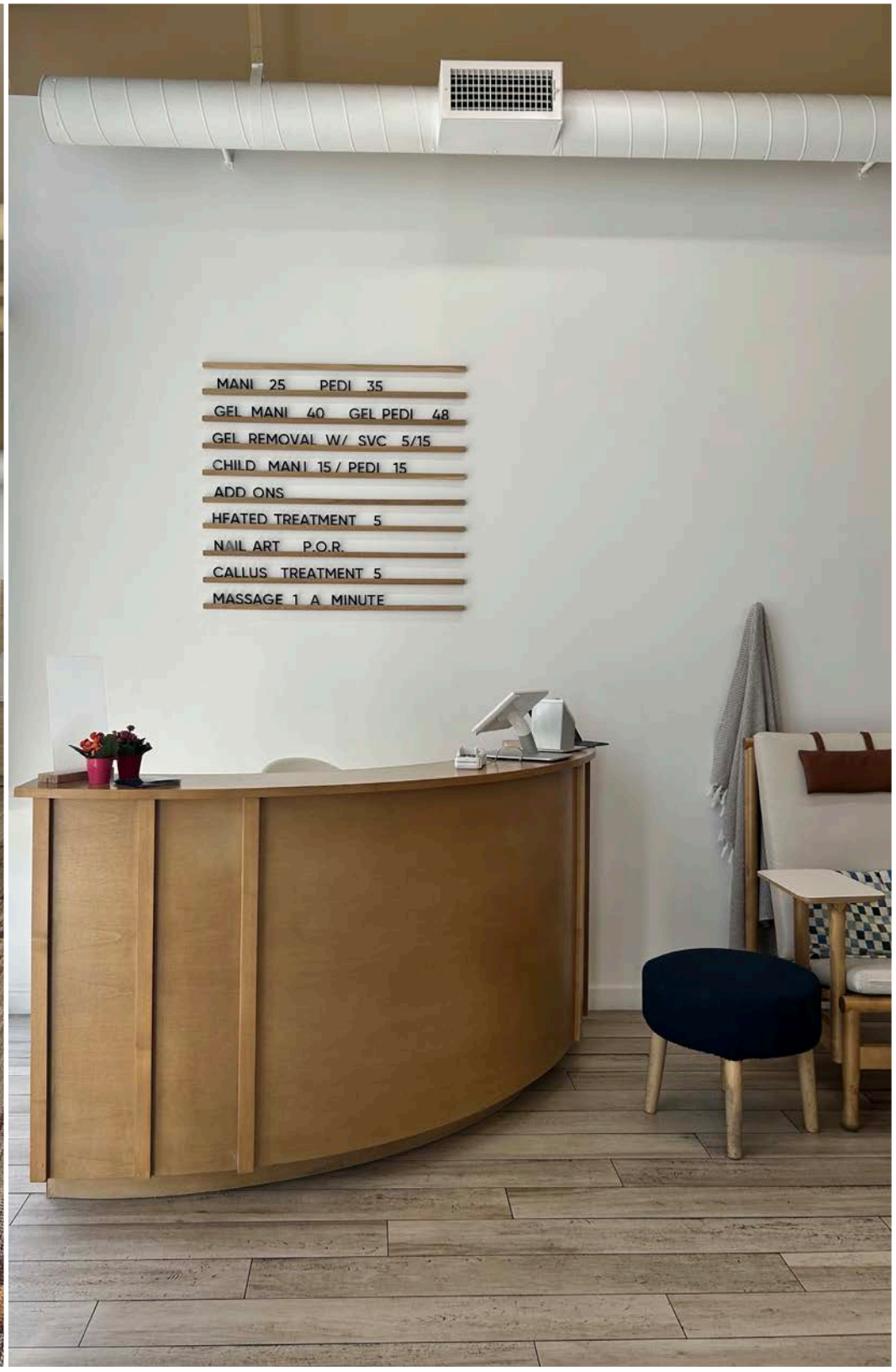


A DIVISION OF  
**LEE &  
ASSOCIATES**

1508 17th Street, Santa Monica, CA  
310.899.2700 | WWW.LEEWESTLA.COM

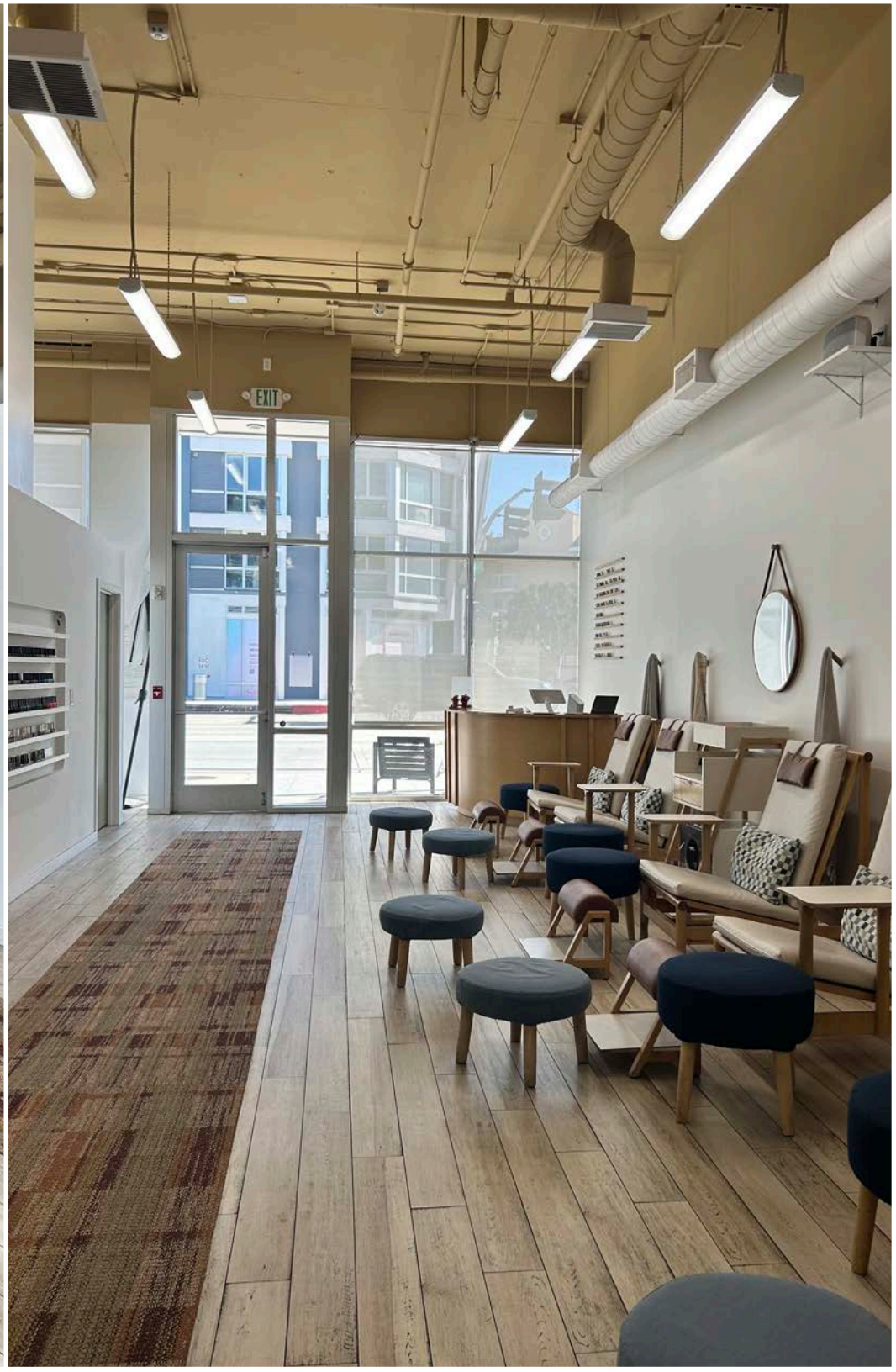
No warranty or representation is made to the accuracy of the foregoing information.  
Terms of sale or lease are subject to change or withdrawal without notice.

SUITE 102

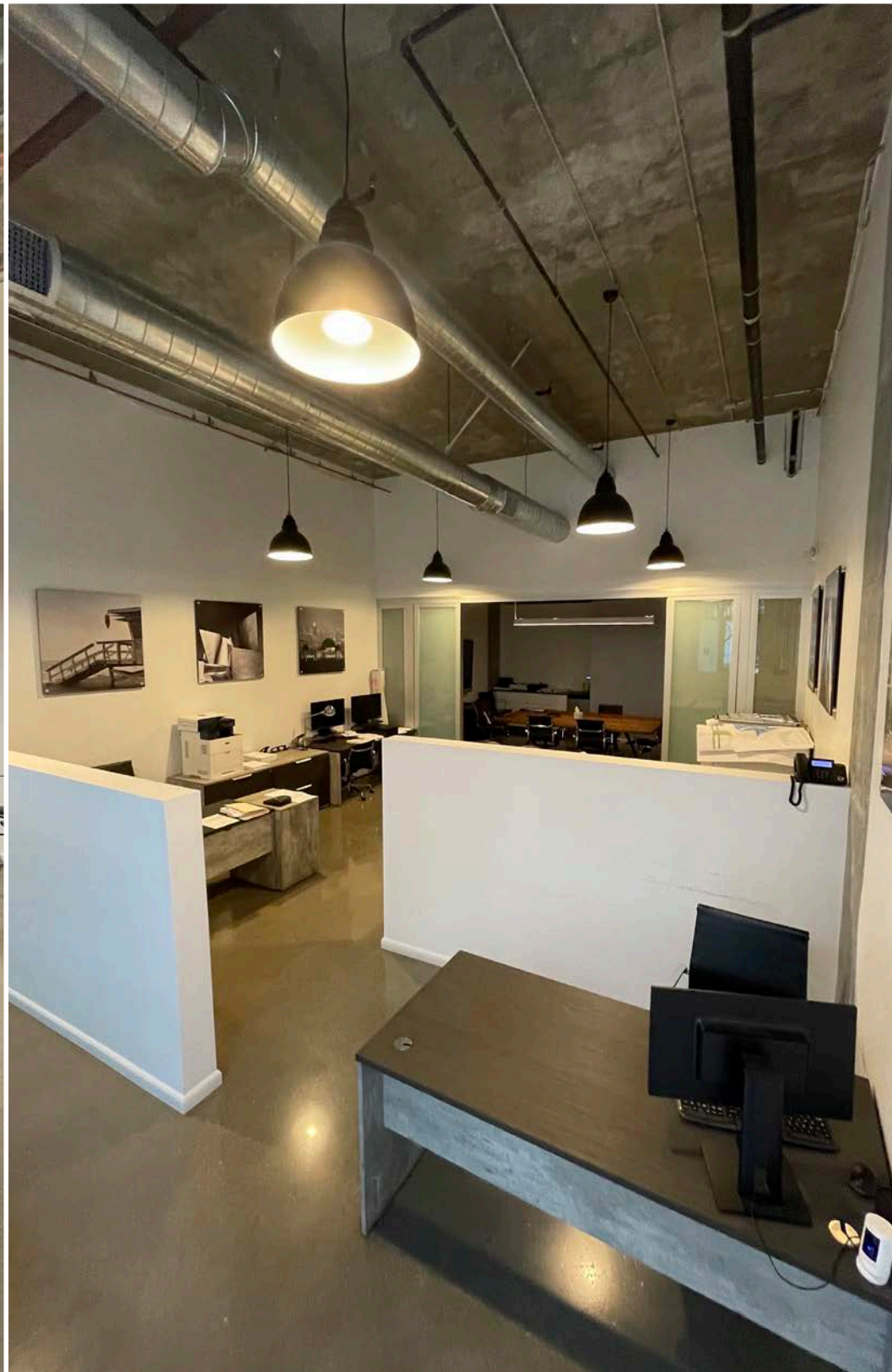
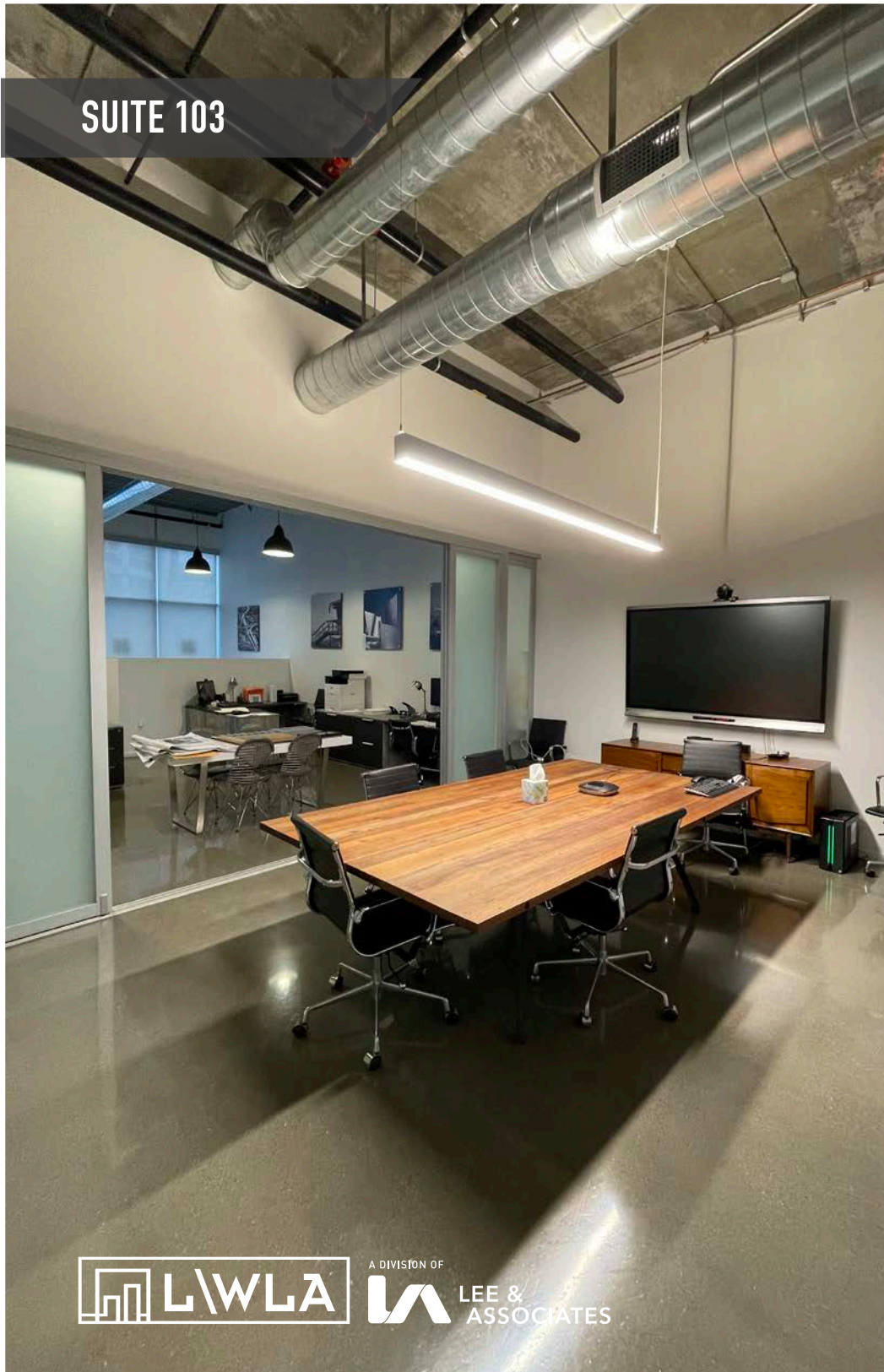


MANI 25 PEDI 35  
GEL MANI 40 GEL PEDI 48  
GEL REMOVAL W/ SVC 5/15  
CHILD MANI 15 / PEDI 15  
ADD ONS  
HFATED TREATMENT 5  
NAIL ART P.O.R.  
CALLUS TREATMENT 5  
MASSAGE 1 A MINUTE

SUITE 102

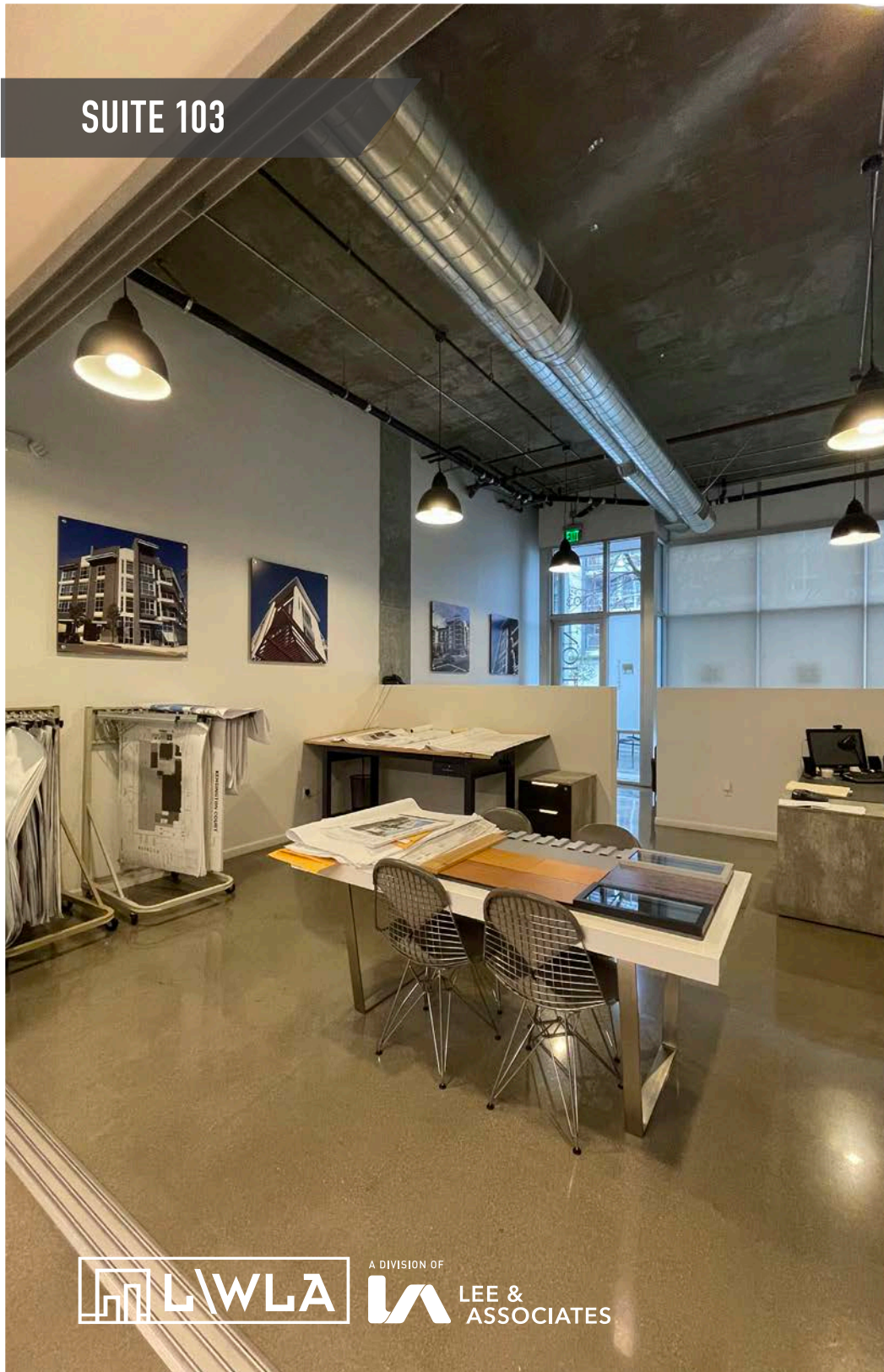


SUITE 103



A DIVISION OF  
LEE &  
ASSOCIATES

SUITE 103

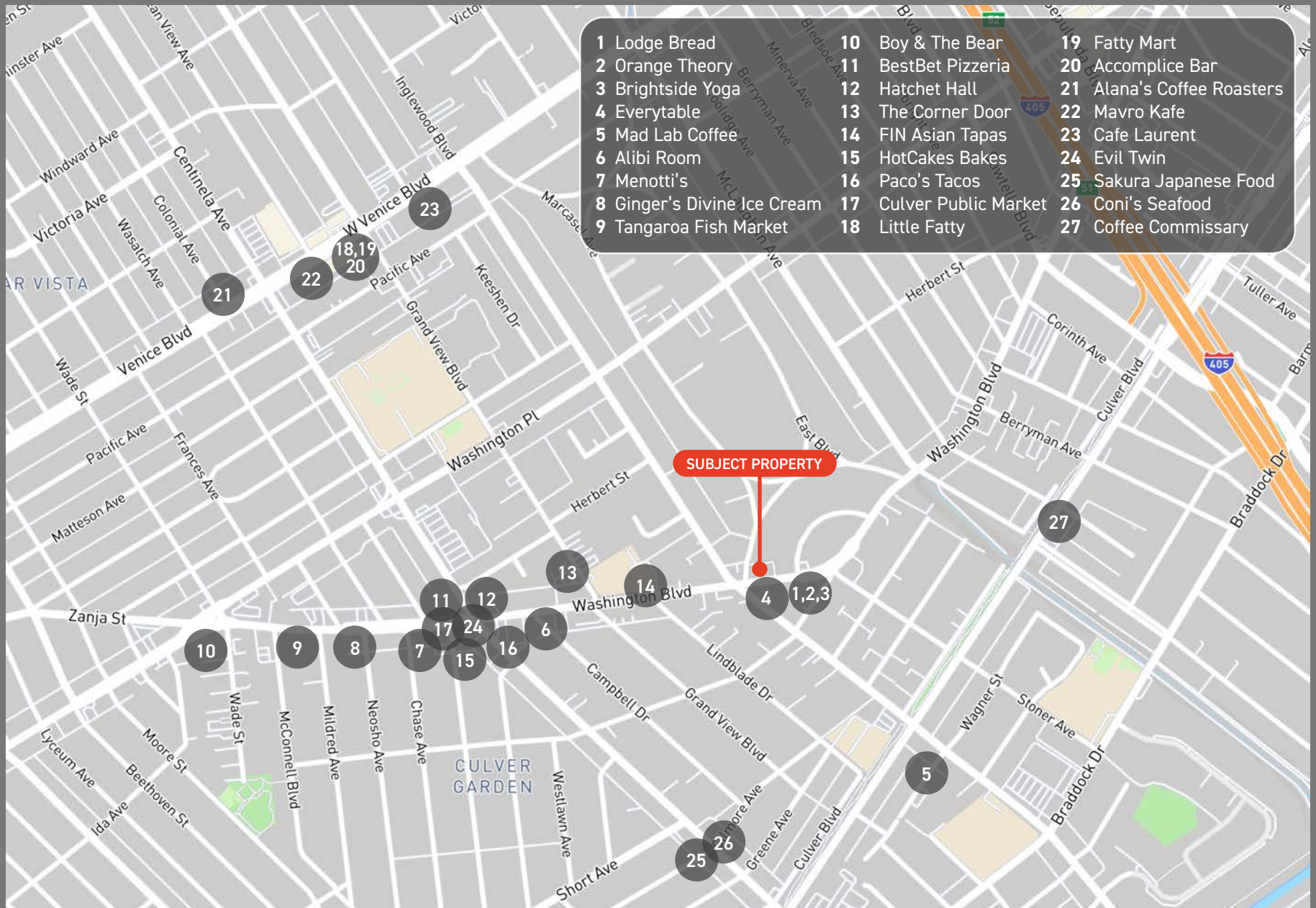


A DIVISION OF



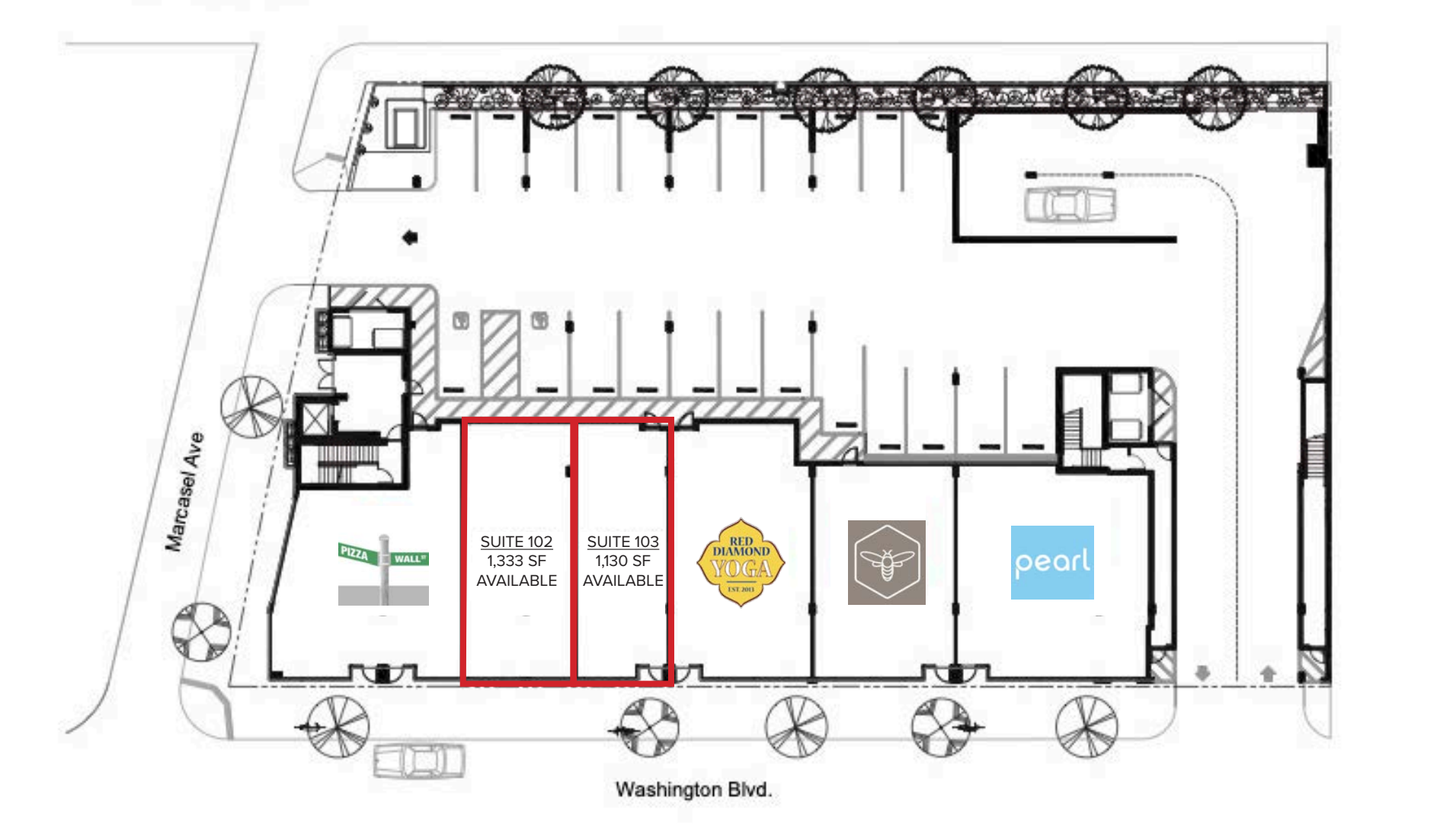
LEE &  
ASSOCIATES

# AMENITIES MAP



- |                             |                         |                            |
|-----------------------------|-------------------------|----------------------------|
| 1 Lodge Bread               | 10 Boy & The Bear       | 19 Fatty Mart              |
| 2 Orange Theory             | 11 BestBet Pizzeria     | 20 Accomplce Bar           |
| 3 Brightside Yoga           | 12 Hatchet Hall         | 21 Alana's Coffee Roasters |
| 4 Everytable                | 13 The Corner Door      | 22 Mavro Kafe              |
| 5 Mad Lab Coffee            | 14 FIN Asian Tapas      | 23 Cafe Laurent            |
| 6 Alibi Room                | 15 HotCakes Bakes       | 24 Evil Twin               |
| 7 Menotti's                 | 16 Paco's Tacos         | 25 Sakura Japanese Food    |
| 8 Ginger's Divine Ice Cream | 17 Culver Public Market | 26 Coni's Seafood          |
| 9 Tangaroa Fish Market      | 18 Little Fatty         | 27 Coffee Commissary       |

# FLOOR PLAN





# CONTACT



## Spencer Horak | Principal

310.899.2728

[shorak@leewestla.com](mailto:shorak@leewestla.com)

AGT DRE 01921906

No warranty or representation is made to the accuracy of the foregoing information. Terms of sale or lease are subject to change or withdrawal without notice.



A DIVISION OF



LEE &  
ASSOCIATES