

Office/Retail for Lease KALBERG BUILDING

4515 - 4519 University Way NE, Seattle, WA 98105



LISTING INFORMATION

LEASE RATE: \$1,000/month (gross)
SUITE 200: 385 SF
SUITE 202: 481 SF
SUITE 203: 472 SF
SUITE 204: 502 SF

LEASE RATE: \$4,000/month (NNN)
SUITE 205: 3,811 SF

LEASE RATE: \$0.50 SF/yr
BASEMENT SF: 100 - 6,089 SF

COMMENTS

Fantastic U-District location near I-5, centrally located between NE 45th Street and NE 47th Street

Second-floor space available, suitable for offices, professional services, etc. with elevator access.

Storage available on basement level



CONTACT

Aaron Mathieu

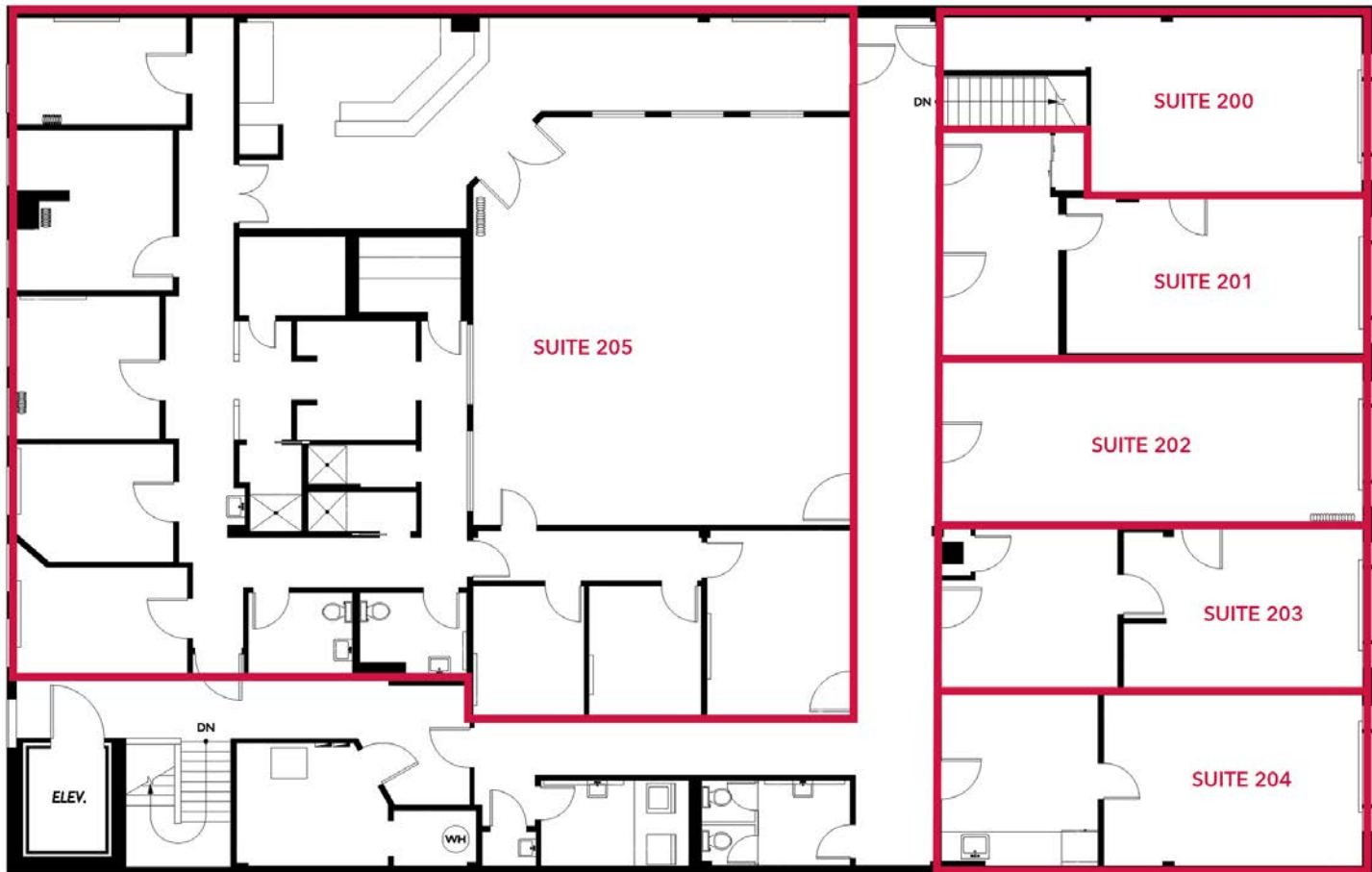
amathieu@lee-associates.com

D 206.210.5207

We obtained the information above from sources we believe to be reliable. However, we have not verified its accuracy and make no guarantee, warranty or representation about it. It is submitted subject to the possibility of errors, omissions, change of price, rental or other conditions, prior sale, lease or financing, or withdrawal without notice. We include projections, opinions, assumptions or estimates for example only, and they may not represent current or future performance of the property. You and your tax and legal advisors should conduct your own investigation of the property and transaction.

Office/Retail for Lease KALBERG BUILDING

4515 - 4519 University Way NE, Seattle, WA 98105



AVAILABLE SPACES

SUITE	SIZE (SF)	LEASE TYPE	LEASE RATE	DESCRIPTION
200	385 SF	Gross	\$1,000 per month	Street facing windows/Can be combined with other suites
202	481 SF	Gross	\$1,000 per month	Street facing windows/Can be combined with other suites
203	472 SF	Gross	\$1,000 per month	Street facing windows/Can be combined with other suites
204	502 SF	Gross	\$1,000 per month	Street facing windows/Can be combined with other suites
205	3,811 SF	NNN	\$4,000 per month	Available with 30 days notice/Can be combined with other suites

CONTACT

Aaron Mathieu

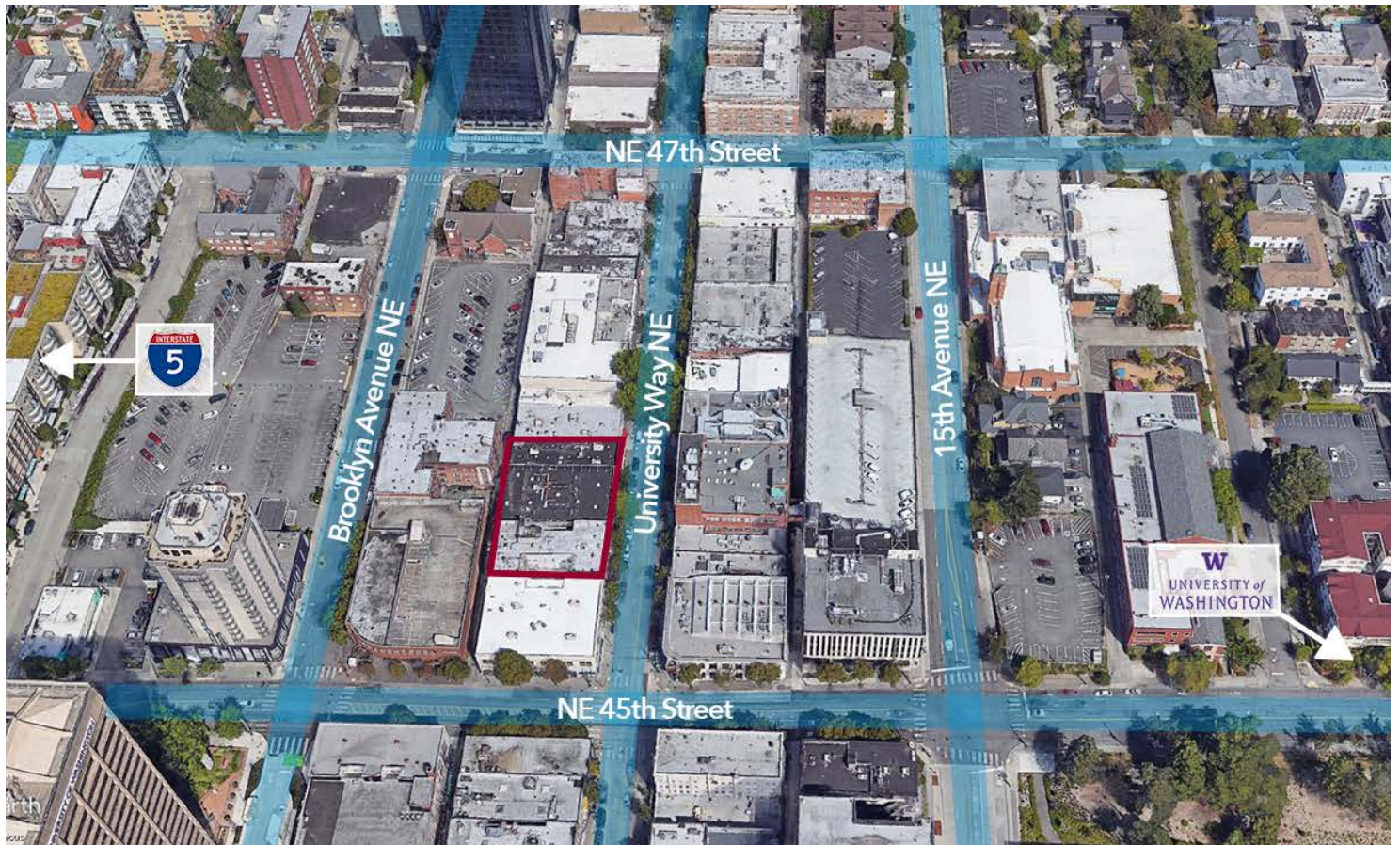
amathieu@lee-associates.com

D 206.210.5207

We obtained the information above from sources we believe to be reliable. However, we have not verified its accuracy and make no guarantee, warranty or representation about it. It is submitted subject to the possibility of errors, omissions, change of price, rental or other conditions, prior sale, lease or financing, or withdrawal without notice. We include projections, opinions, assumptions or estimates for example only, and they may not represent current or future performance of the property. You and your tax and legal advisors should conduct your own investigation of the property and transaction.

Office/Retail for Lease
OFFICE / PROFESSIONAL SERVICES SPACE

4515 - 4519 University Way NE, Seattle, WA 98105



CONTACT

Aaron Mathieu

amathieu@lee-associates.com

D 206.210.5207

We obtained the information above from sources we believe to be reliable. However, we have not verified its accuracy and make no guarantee, warranty or representation about it. It is submitted subject to the possibility of errors, omissions, change of price, rental or other conditions, prior sale, lease or financing, or withdrawal without notice. We include projections, opinions, assumptions or estimates for example only, and they may not represent current or future performance of the property. You and your tax and legal advisors should conduct your own investigation of the property and transaction.

Office/Retail for Lease KALBERG BUILDING

4515 - 4519 University Way NE, Seattle, WA 98105



CONTACT

Aaron Mathieu

amathieu@lee-associates.com

D 206.210.5207

We obtained the information above from sources we believe to be reliable. However, we have not verified its accuracy and make no guarantee, warranty or representation about it. It is submitted subject to the possibility of errors, omissions, change of price, rental or other conditions, prior sale, lease or financing, or withdrawal without notice. We include projections, opinions, assumptions or estimates for example only, and they may not represent current or future performance of the property. You and your tax and legal advisors should conduct your own investigation of the property and transaction.