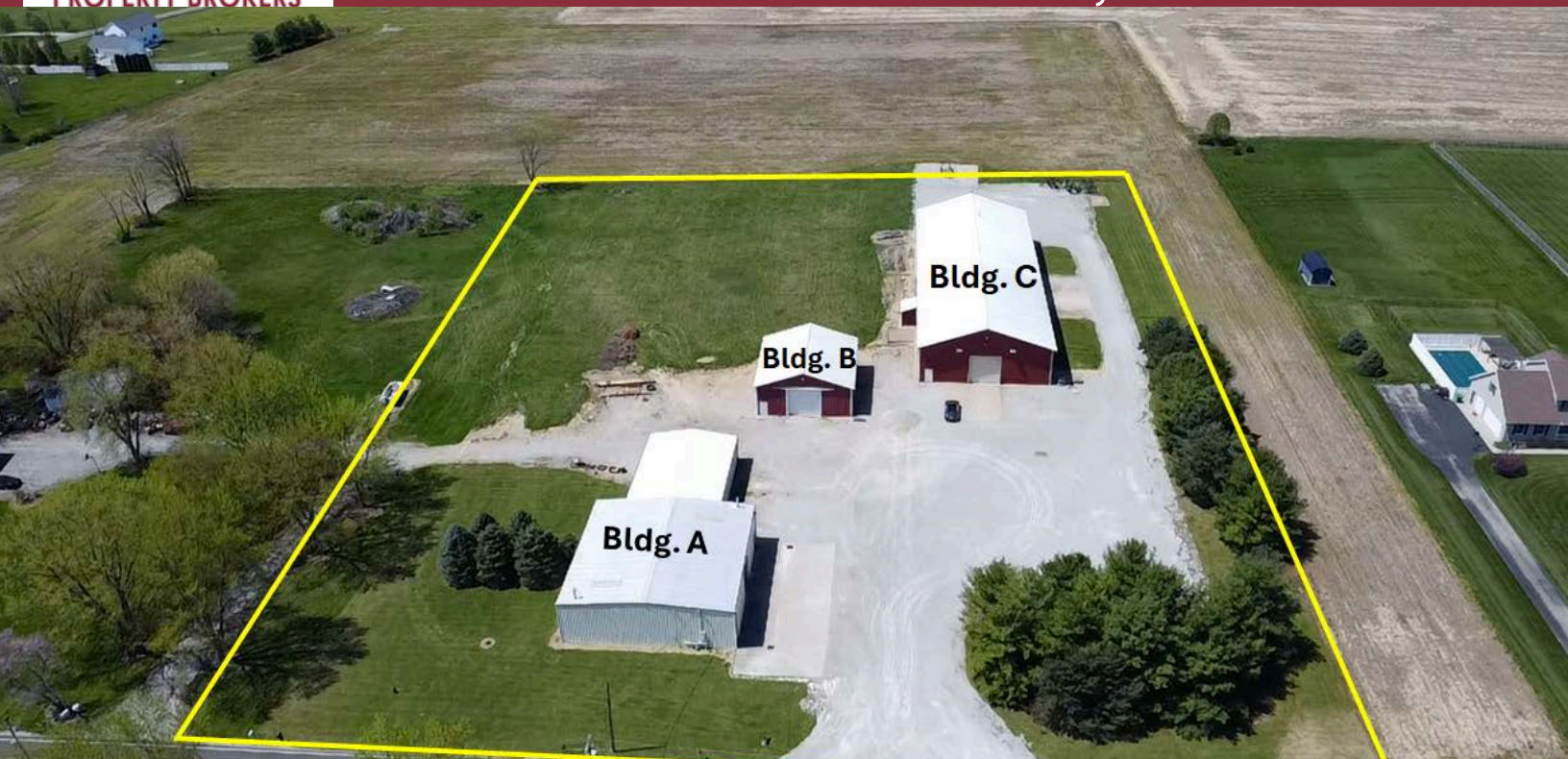


# INCOME PRODUCING FACILITIES



1221 GROOP ROAD  
SPRINGFIELD, OH 45504



## Property Highlights:

**Sale Price:** \$800,000

**Bldg. B Lease Rate:** \$4.00 NNN SF/Year

**Square Feet:** 17,500 SF

**Clear Height:** 12' - 18'

**Drive-In Doors:** One - 12' x 14'

One - 11' x 12'

Four - 14' x 14'

- ✓ 11 Cranes (1 -2 Tons)
- ✓ 10 -15 HP Air Compressor
- ✓ Security Cameras Inside/Out
- ✓ Income Producing
- ✓ Expandable Land (14.05 Acres)
- ✓ 3 Miles to I-70
- ✓ No City Income Tax



### Tim Echemann

Principal Broker

C: 937.658.4403

P: 937.492.4423

[techemann@ipbindustrial.com](mailto:techemann@ipbindustrial.com)

[www.ipbindustrial.com](http://www.ipbindustrial.com)



### Conrad Echemann

Sales Associate

C: 937.658.4282

P: 937.492.4423

[conrad@ipbindustrial.com](mailto:conrad@ipbindustrial.com)

[www.ipbindustrial.com](http://www.ipbindustrial.com)

# INCOME PRODUCING FACILITIES



1221 GROOP ROAD  
SPRINGFIELD, OH 45504

**Land:** 4.39 Acres

**Office:** 800 SF - 1 private office,  
1 conference room, & One 3-person office

**Roof:** Metal

**Floor:** 6" - 8" Thick

**Restrooms:** 2 Unisex & Plumbing for 3rd

**Power:** 480 Volts III Phase

**Year Built:** 2008, 2005 & 1976

**Lighting:** LED & T8

**Column Spacing:** Clear Span

**Parking Spaces:** 30 Car & 10 Trailer Spaces

**Utilities:** Natural Gas, Well & Septic

**HVAC Plant:** Forced Air Gas/Radiant Gas Tube

**Zoning:** M2; Manufacturing

**Parcel Number:** 0500600030000093

**Annual Taxes:** \$5,809.18



Scan for more info



**Tim Echemann**

Principal Broker

C: 937.658.4403

P: 937.492.4423

[techemann@ipbindustrial.com](mailto:techemann@ipbindustrial.com)

[www.ipbindustrial.com](http://www.ipbindustrial.com)



**Conrad Echemann**

Sales Associate

C: 937.658.4282

P: 937.492.4423

[conrad@ipbindustrial.com](mailto:conrad@ipbindustrial.com)

[www.ipbindustrial.com](http://www.ipbindustrial.com)



# INCOME PRODUCING FACILITIES



1221 GROOP ROAD  
SPRINGFIELD, OH 45504



**Tim Echemann**

Principal Broker

C: 937.658.4403

P: 937.492.4423

[techemann@ipbindustrial.com](mailto:techemann@ipbindustrial.com)

[www.ipbindustrial.com](http://www.ipbindustrial.com)



**Conrad Echemann**

Sales Associate

C: 937.658.4282

P: 937.492.4423

[conrad@ipbindustrial.com](mailto:conrad@ipbindustrial.com)

[www.ipbindustrial.com](http://www.ipbindustrial.com)



# INCOME PRODUCING FACILITIES



1221 GROOP ROAD  
SPRINGFIELD, OH 45504



**Tim Echemann**

Principal Broker

C: 937.658.4403

P: 937.492.4423

[techemann@ipbindustrial.com](mailto:techemann@ipbindustrial.com)

[www.ipbindustrial.com](http://www.ipbindustrial.com)



**Conrad Echemann**

Sales Associate

C: 937.658.4282

P: 937.492.4423

[conrad@ipbindustrial.com](mailto:conrad@ipbindustrial.com)

[www.ipbindustrial.com](http://www.ipbindustrial.com)

ALL INFORMATION FURNISHED IS FROM SOURCES BELIEVED TO BE RELIABLE, AND IS SUBJECT TO ERROR, OMISSIONS, CHANGE OF TERMS AND CONDITIONS PRIOR TO SALE, LEASE, OR FINANCING, OR WITHDRAWAL