

# Jenks Landing

11476 S. Union Ave., Jenks, OK

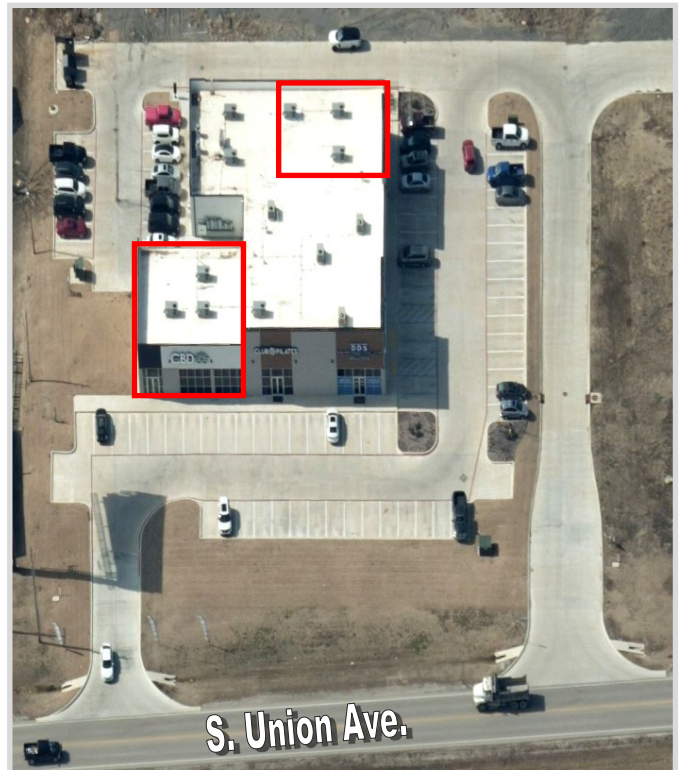
[www.walmancommercial.com](http://www.walmancommercial.com)

918-481-8888



## HWY 75 Retail Space Available

- 1,590 sf & 4,612 sf end caps available
- Conveniently located less than 1 mile south of the Creek Turnpike and HWY 75 intersection, with excellent access to both.
- Excellent visibility to HWY 75
- Overall trade area includes Jenks, Glenpool and Sapulpa.
- Locally owned and managed
- Immediate trade area features Walmart, Chick-fil-a, Starbucks, McDonald's and many more.



7060 S. Yale  
Suite 900  
Tulsa, OK 74136  
Tel: 918.481.8888  
Fax: 918.481.8866

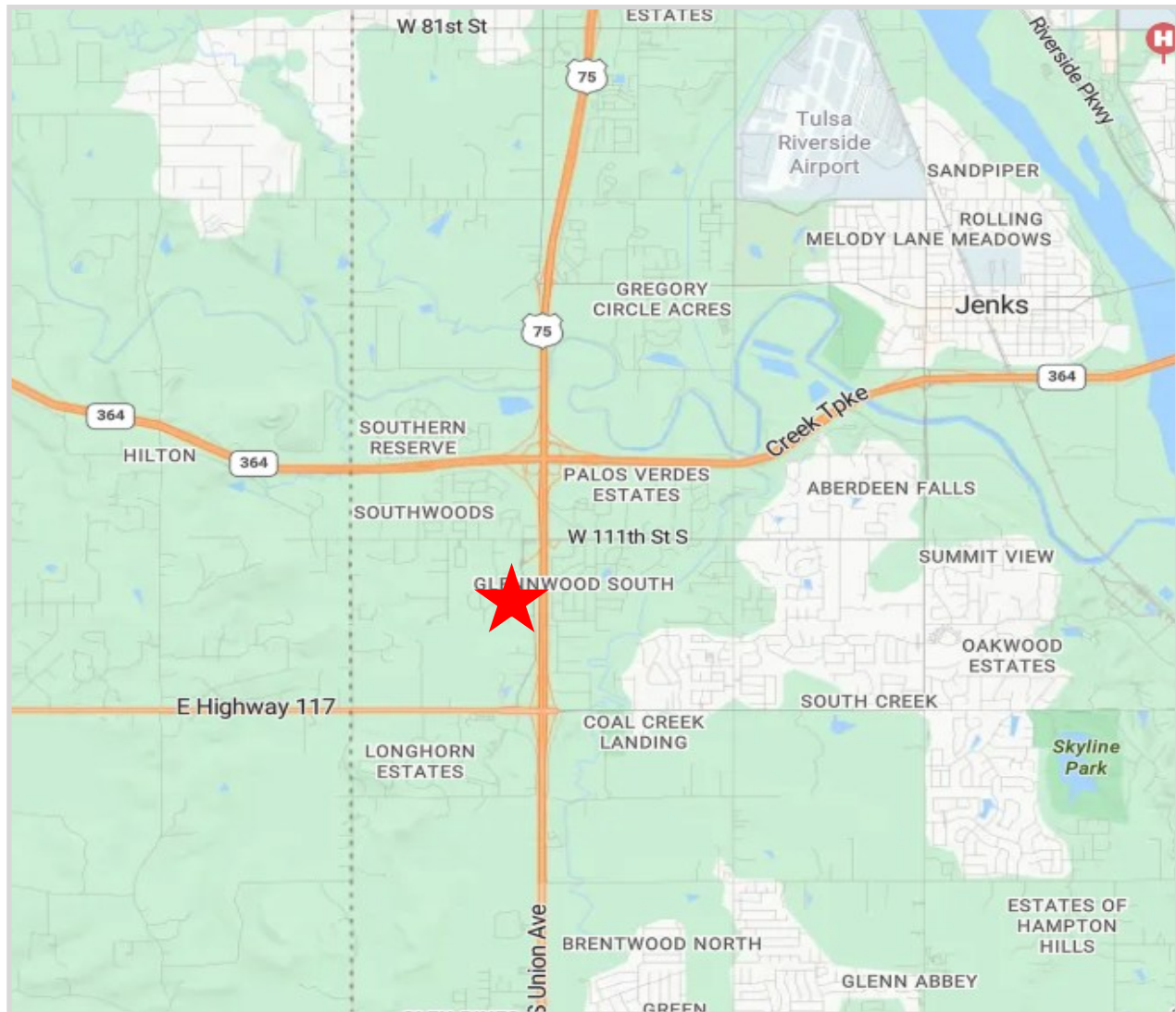
All statements herein are for informational purposes only and are believed to be reliable; however, no warranty or representation is made to the accuracy thereof and the same is submitted subject to errors, omissions, change of price, terms, conditions and prior sale or lease.

# Jenks Landing

11476 S. Union Ave., Jenks, OK

[www.walmancommercial.com](http://www.walmancommercial.com)

918-481-8888



## DEMOGRAPHICS

MILE RADIUS	1	3	5
Population:	3,707	25,107	76,740
Households:	1,196	8,932	28,909
Avg. H.H. Income:	\$114,797	\$107,403	\$95,873
Traffic Count:	HWY 75 - 48,418 VPD		

jenks  
LANDING

All statements herein are for informational purposes only and are believed to be reliable; however, no warranty or representation is made to the accuracy thereof and the same is submitted subject to errors, omissions, change of price, terms, conditions and prior sale or lease.