

2655

RICHMOND AVENUE



8,747 SF RETAIL SPACE AVAILABLE FOR SUBLEASE

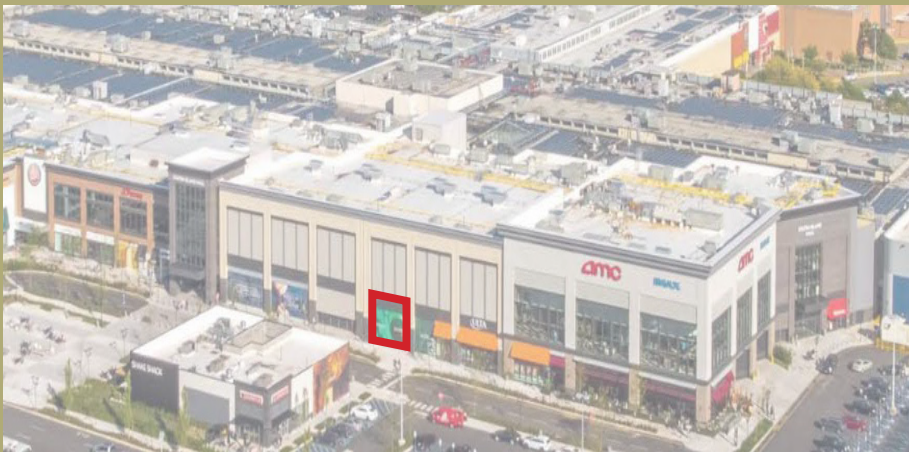


2655
RICHMOND AVENUE

Space Features

Ground Floor 8,747 SF
Lease Type Sublease
Term Thru 3/31/2029

- Recently vacated
- Immediately available
- Nice move-in medical condition
- Located in the new section of the **STATEN ISLAND MALL**

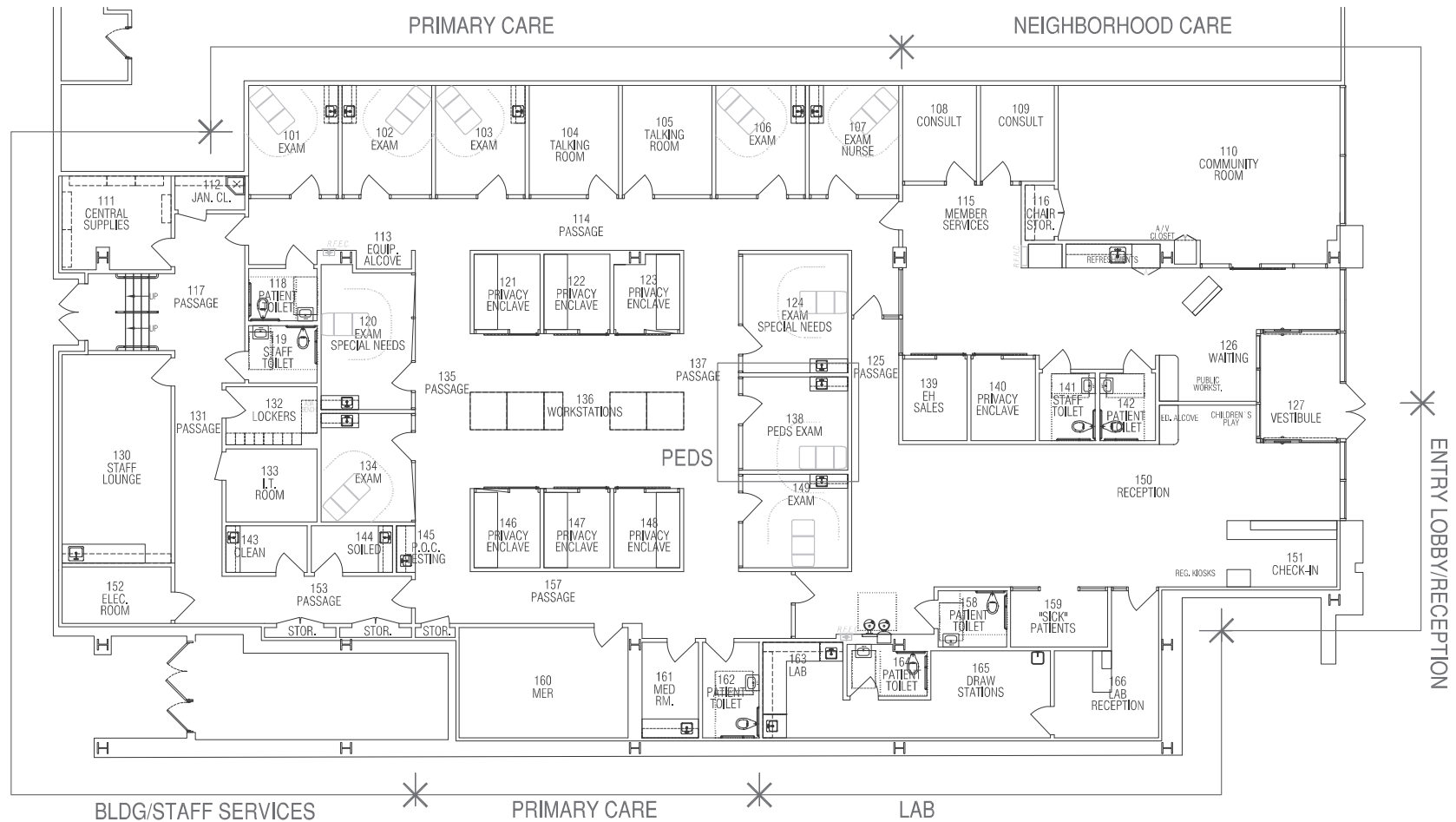


2655

RICHMOND AVENUE

Floor Plan

Ground Floor: 8,747 SF



2655

RICHMOND AVENUE

The Space

Ground Floor: 8,747 SF



2655

RICHMOND AVENUE

The Area



STATEN ISLAND

2655
RICHMOND AVENUE

2655

RICHMOND AVENUE

Wayne Kasbar

Vice President
Licensed Salesperson
wayne.kasbar@colliers.com
+1 732 807 0330

Brian Given

Vice Chair
Licensed Associate Broker
brian.given@colliers.com
+1 212 716 3518

Suketu Shah

Associate Vice President
Licensed Salesperson
suketu.shah@colliers.com
+1 732 807 0401

Sheena Gohil

Vice Chair
Licensed Salesperson
sheena.gohil@colliers.com
+1 212 716 3828

No representation is made as to the accuracy of the information furnished herein and same is submitted subject to errors, omissions, change of prices, rental, or other conditions, prior sale, lease, sublease, and/or withdrawal without notice. While every attempt is made to ensure accuracy, the floor plan(s) is for guidance only. The measurements, dimensions, specifications, and other data shown are approximate and may not be to scale. We assume no responsibility for the accuracy of the floor plan(s) or for any action taken in reliance thereon. The floor plan(s) do not create any representation, warranty or contract. All parties should consult a professional, such as an architect, to verify the information contained herein. The furnishing of this information shall not be deemed a hiring. A commission in accordance with our principal's schedule of rates and conditions will be paid to the procuring Broker who executes our or our principal's brokerage agreement, subject to a fully consummated transaction upon terms and conditions acceptable to our principal. Colliers International NY, LLC

Colliers