

18 CAMPUS

17 CAMPUS  
& AMENITY CENTER

14 CAMPUS

15 CAMPUS

11 CAMPUS

# NEWTOWN SQUARE

▣ CORPORATE CAMPUS

Office, Education & Medical Uses  
1,200 to 70,000 Sq. Ft.



# NEWTOWN SQUARE

■ CORPORATE CAMPUS

## Join the most amenity rich corporate location in Delaware County

**Why** – Professional. Convenient. Fun. Accessible. Affordable.

**The Project** – Newtown Square Corporate Campus is a one of a kind opportunity for companies large and small to occupy the highest quality amenitized office space in the region.

**Location** – Newtown Square is home to a live, work, and play environment which features high end hospitality, main street and regional retail, corporate clientele, high end educational institutions, and an influx of new housing. The environment and access to prime local labor and educational markets allows the area to uniquely support established and growing businesses in a convenient way relative to alternative locations.

**Opportunity** – The modern employee desires convenience. The days of working in an isolated environment are gone. We provide on site fitness amenities, ample convenient parking, high end space, café and lounge with a grab and go market, and convenient access to retail amenities – all within distance of multiple local and regional highways/thorofares.

# Who Is Here:

Newtown Square is home to major national and local companies at or within **1 Mile** of the Newtown Square Corporate Campus.



# Drive Time Map

## 15 Min Drive Time

- Exton 5 min
- Malvern 10 min

## 30 Min Drive Time

- West Chester 17 min
- King of Prussia 20 min
- Conshohocken 26 min

## 45 Min Drive Time

- Center City, Phila. 35 min
- Lansdale 40 min
- Pottstown 41 min
- Wilmington, DE 45 min
- Cherry Hill, NJ 45 min

## > 45 Min Drive Time

- Lancaster 55 min
- Allentown 65 min





**956**  
Hotel Rooms  
Within **15** Minutes



**New**  
Full Service  
Fitness Center



**On-Site**  
Conference  
& Training Center



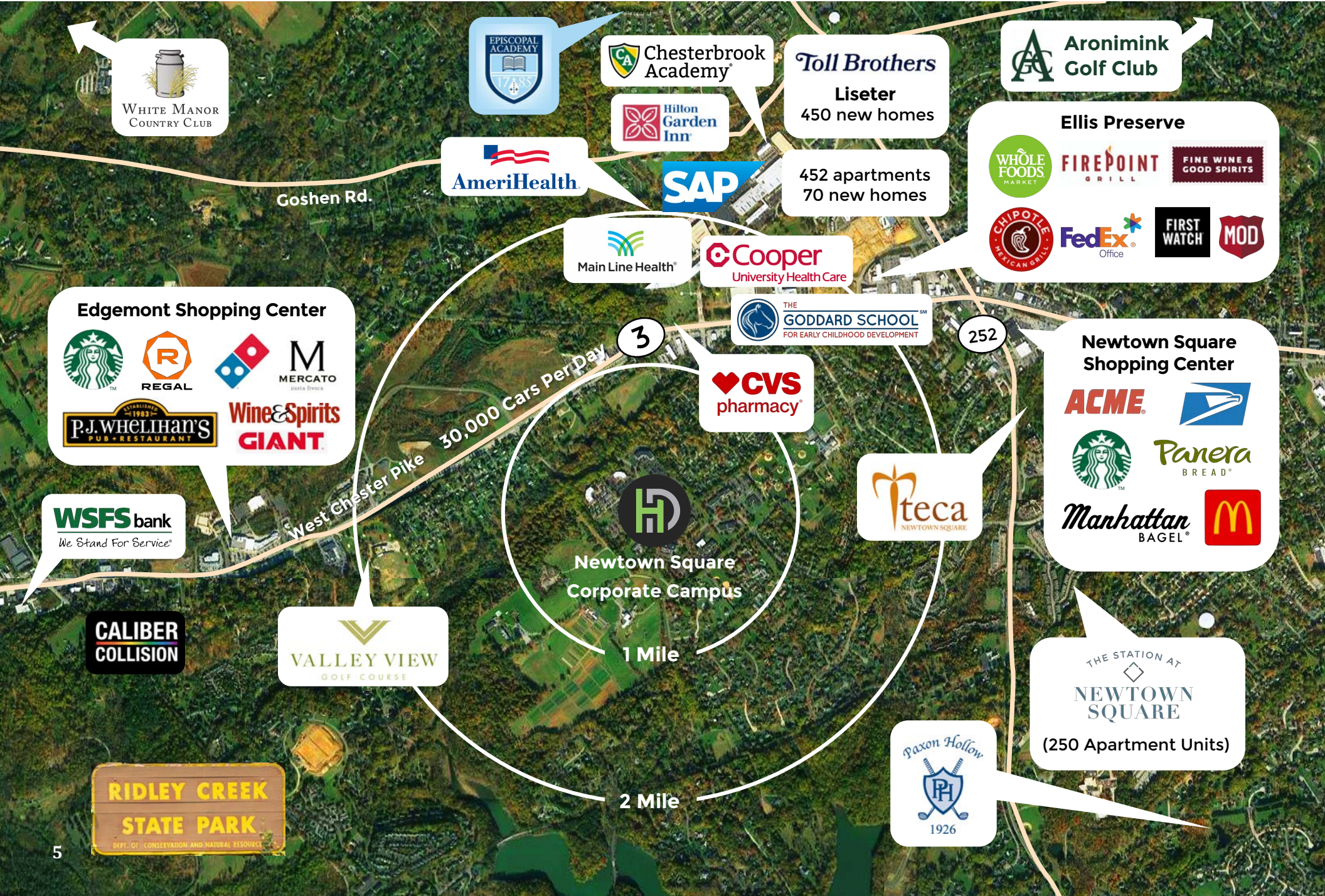
**8 Golf Clubs**  
Within **15** Minutes



**Runner-Friendly**  
Campus

# Aerial View

## NEWTOWN SQUARE CORPORATE CAMPUS



# Amenity Center

2023 Opening

**NEWTOWN SQUARE**  
CORPORATE CAMPUS



Café & Lounge with Grab & Go Market



Conference Room (10)



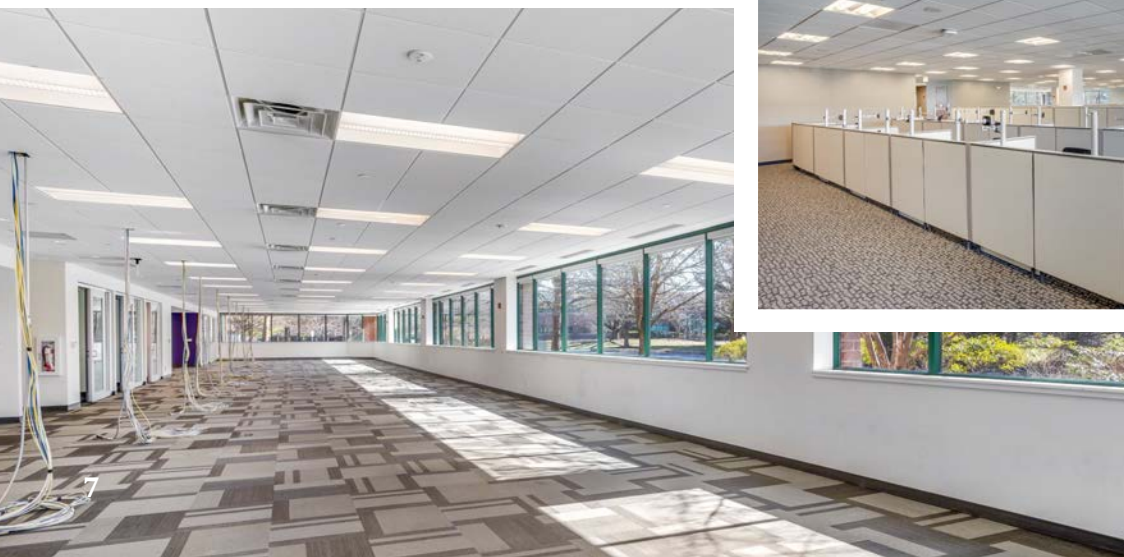
Fitness Center



Training Room (34)

# Site Photos

**NEWTOWN SQUARE**  
CORPORATE CAMPUS



# Availabilities

## 11 Campus Blvd:

Full or Partial 2nd Floor: 6,439 – 25,756 SF



## 14 Campus Blvd:

Full or Partial Building (3 Floors) Availability Demisable Options:

- 68,862 Sq Ft
- 45,908 Sq Ft
- 22,954 Sq Ft
- 11,477 Sq Ft
- 5,738 Sq Ft



## 15 Campus Blvd:

Full or Partial 1st Floor: 3,000 – 24,810 SF



## 17 Campus Blvd:

Full or Partial 2nd Floor: 6,439 – 25,756 SF



## 18 Campus Blvd:

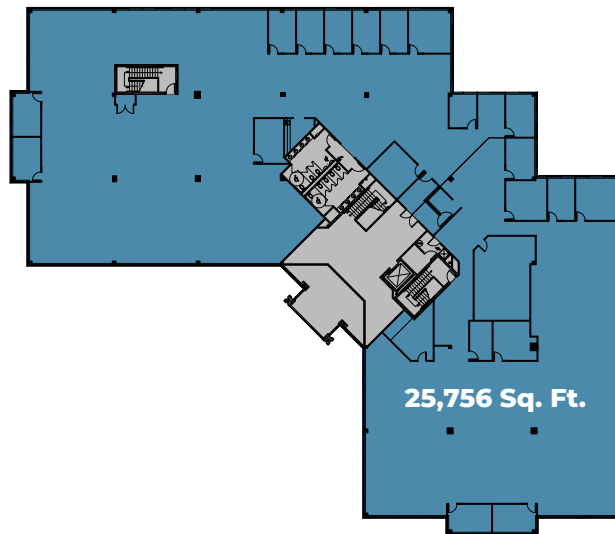
2nd Floor: 2,207 – 13,842 SF



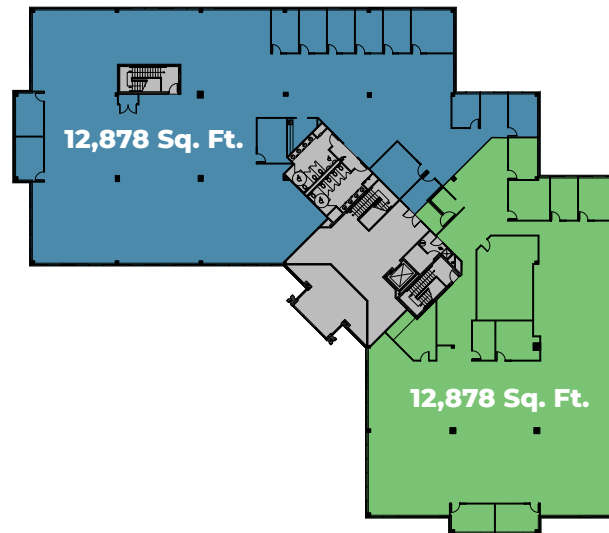
# 11 Campus Blvd

## Demising Options: 2nd Floor

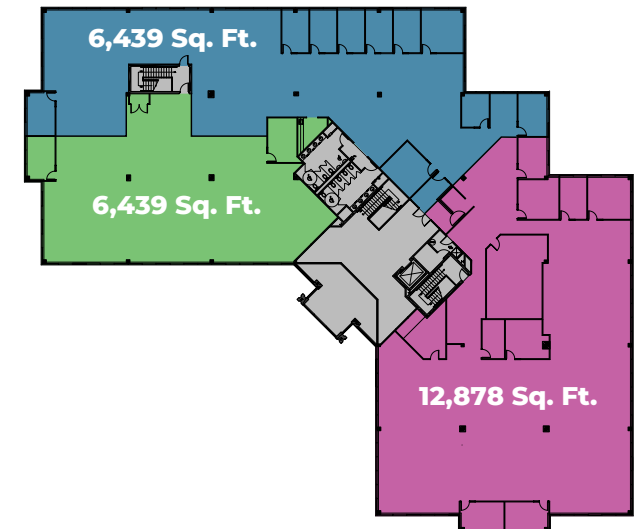
Option 1



Option 2



Option 3

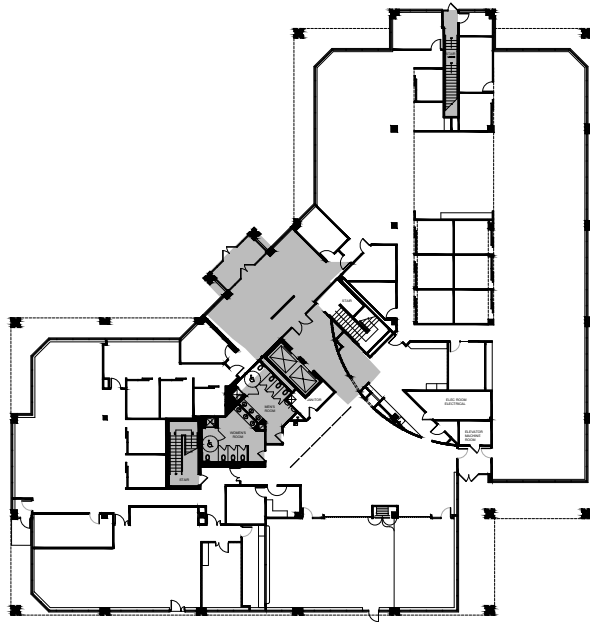


Square footage and configurations are an estimate.

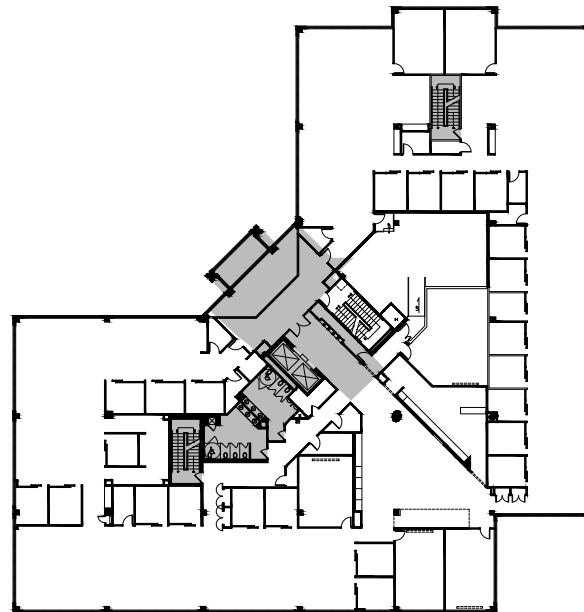
# 14 Campus Blvd

## Full or Partial Building (3 Floors)

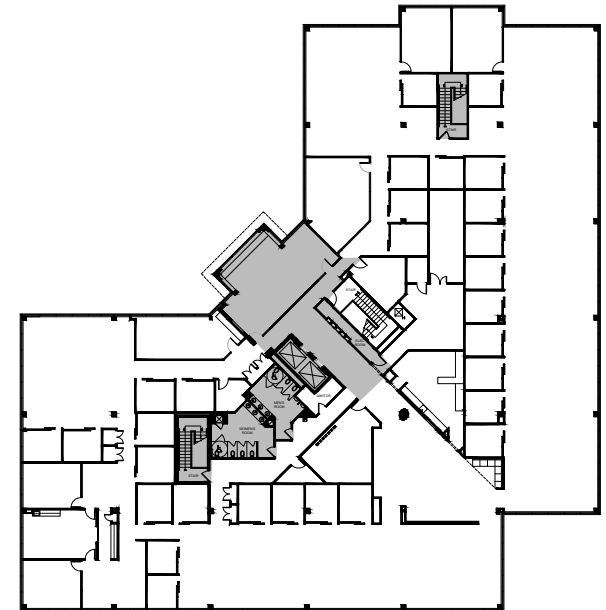
**Floor 1: 22,954 Sq Ft**



**Floor 2: 22,954 Sq Ft**



**Floor 3: 22,954 Sq Ft**

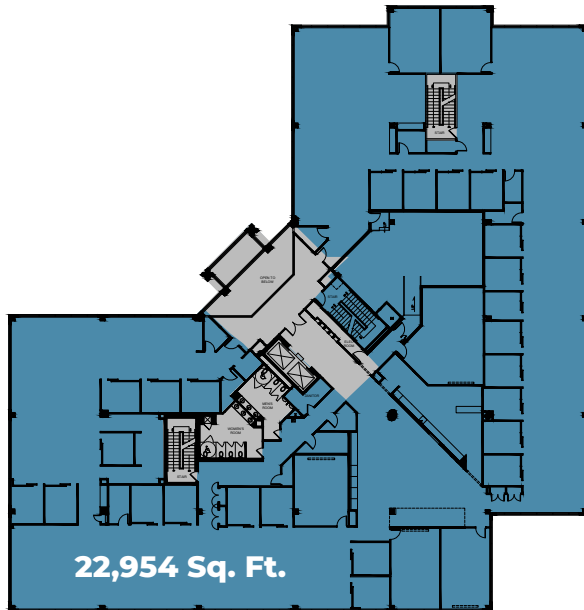


Square footage and configurations are an estimate.

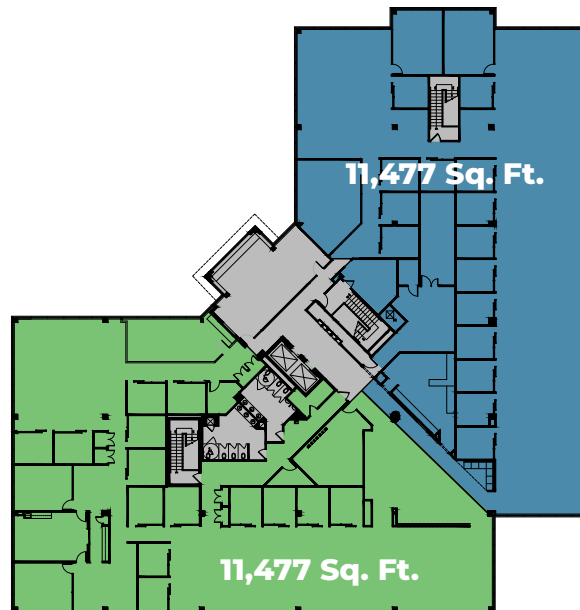
# 14 Campus Blvd

## Demising Options: Full or Partial Building (3 Floors)

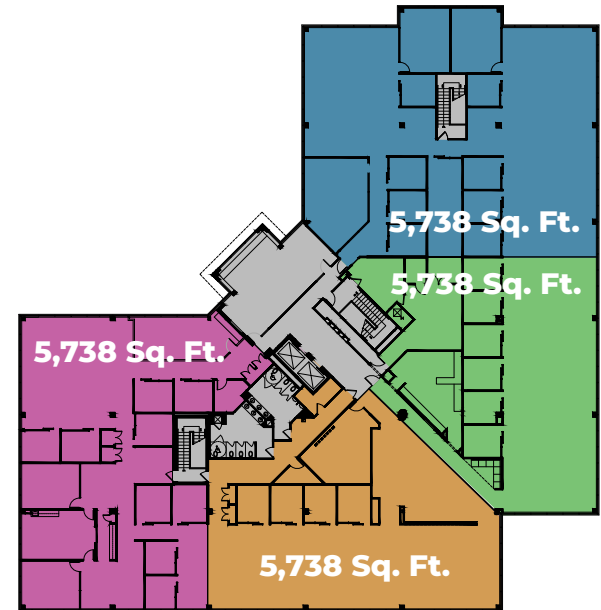
Option 1



Option 2



Option 3

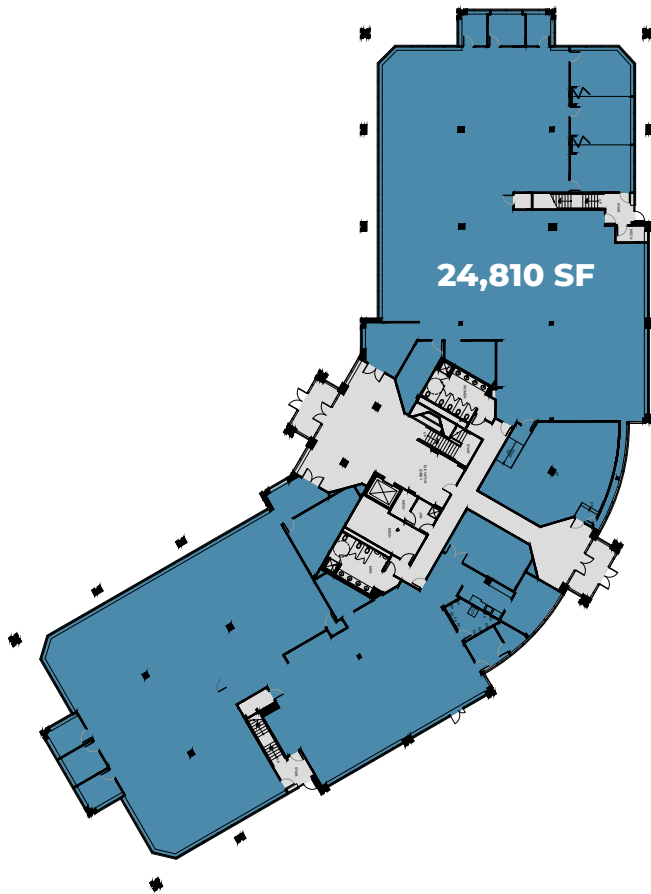


Square footage and configurations are an estimate.

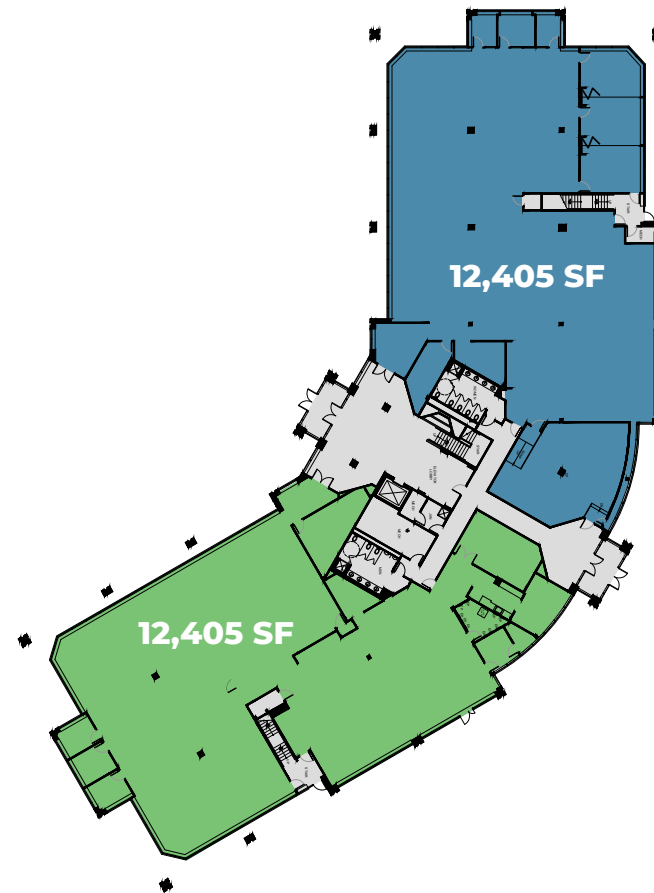
# 15 Campus Blvd

## Demising Options: 1st Floor

Option 1



Option 2

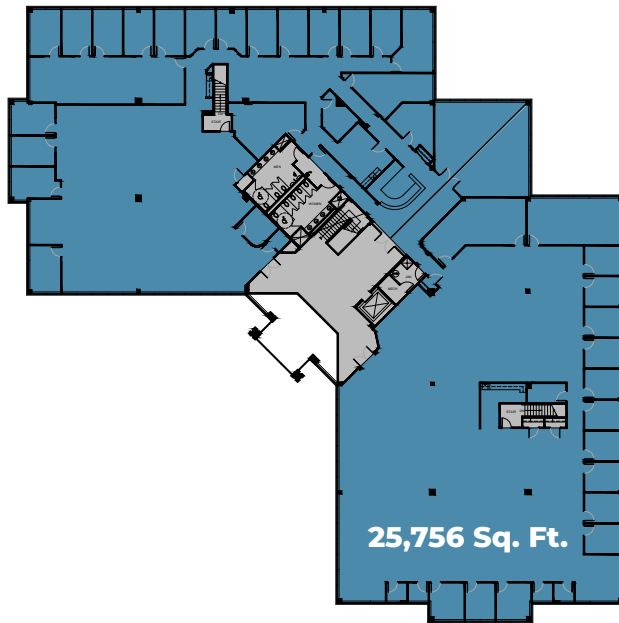


Square footage and configurations are an estimate.

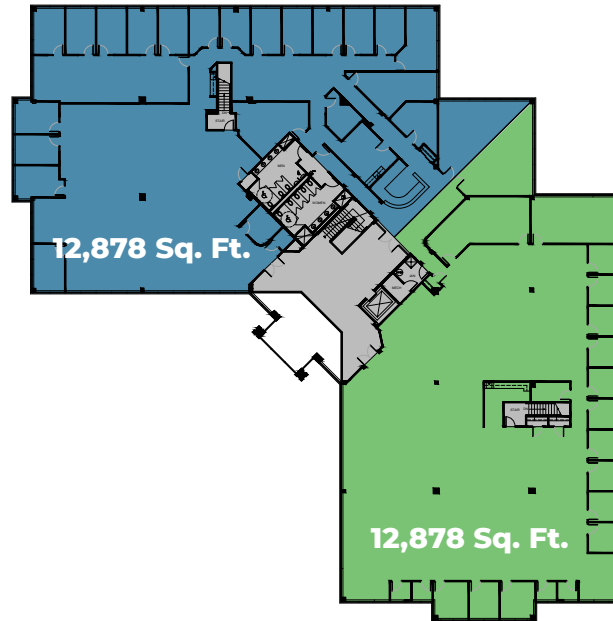
# 17 Campus Blvd

## Demising Options: 1st Floor

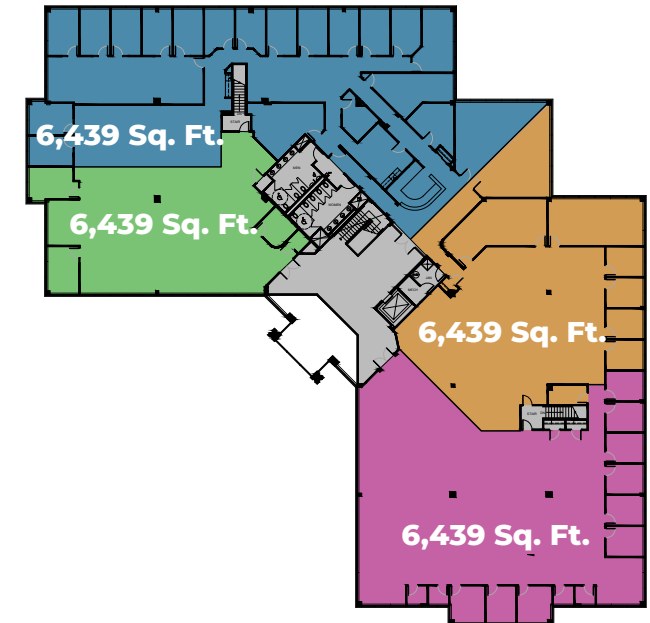
Option 1



Option 2



Option 3

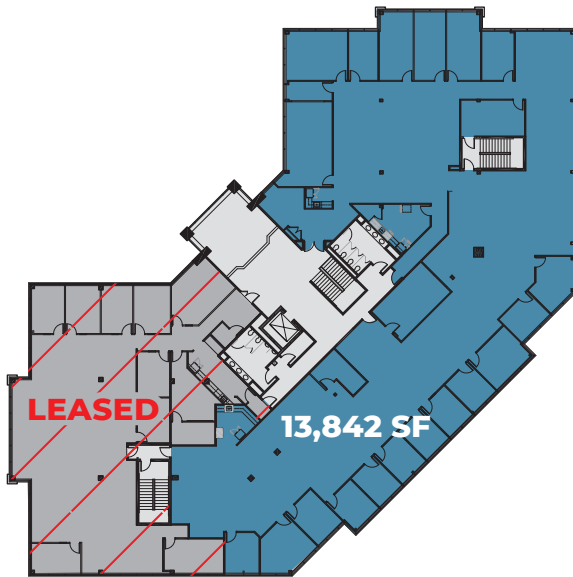


Square footage and configurations are an estimate.

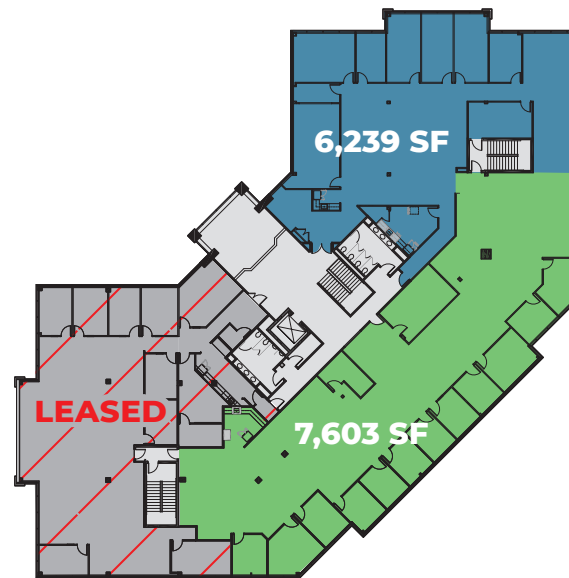
# 18 Campus Blvd

## Demising Options: 2nd Floor

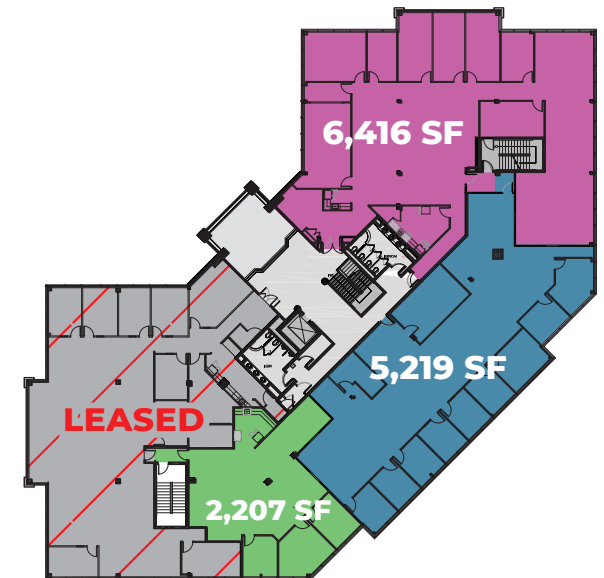
Option 1



Option 2



Option 3



Square footage and configurations are an estimate.

# Call Us

---

AUSTIN WOLFINGTON

610-222-5500 x 2

[awolfington@hunterdurant.com](mailto:awolfington@hunterdurant.com)

TJ DOYLE

610-222-5500 x 1

[tdoyle@hunterdurant.com](mailto:tdoyle@hunterdurant.com)

TRIPP TRAYNOR

610-222-5500 x 5

[ttraynor@hunterdurant.com](mailto:ttraynor@hunterdurant.com)

LOGAN AMMON

610-222-5500 x 4

[lammon@hunterdurant.com](mailto:lammon@hunterdurant.com)



**HUNTER  
DURANT**  
REAL ESTATE ADVISORY FIRM

[www.HunterDurant.com](http://www.HunterDurant.com)