



±5,348 SF Available For Sale | Oreland, PA 19075

Retail | For Sale

CBRE

1401 Bruce
Road



Eastern PA Availabilities

Nearby Tenants Include:



1401 Bruce Road
Oreland, PA 19075

For Sale

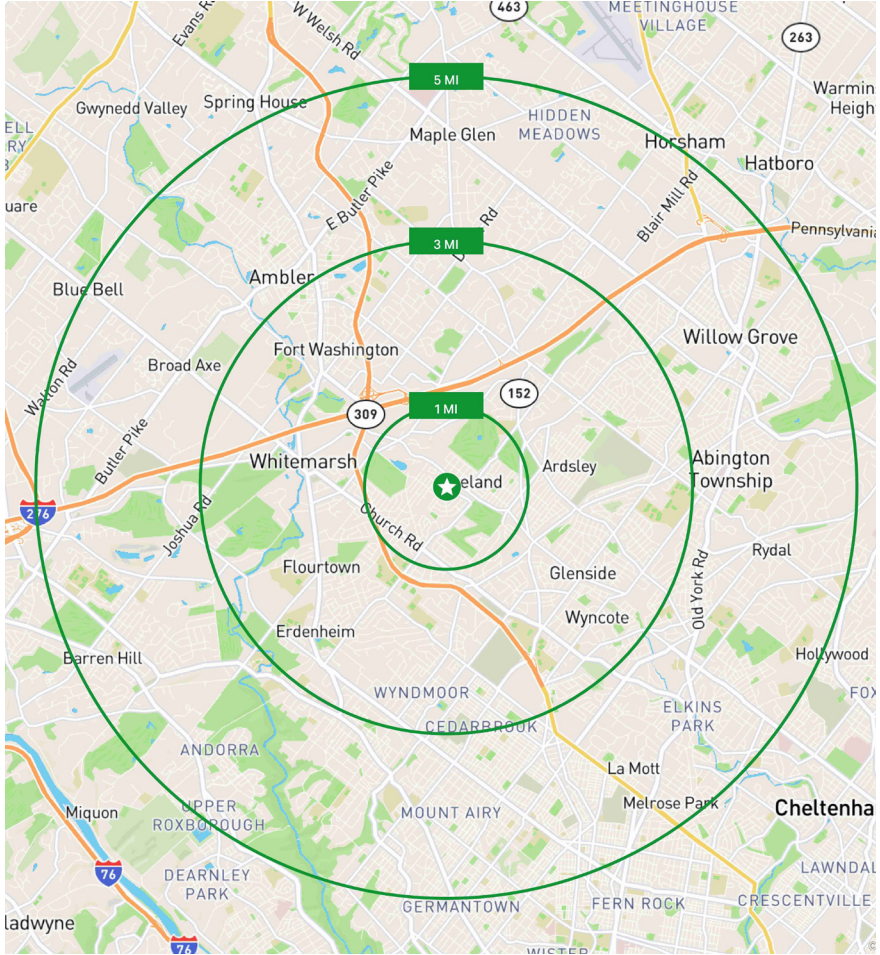
Property Features

- + ± 5,348 SF (Per Public Records) free standing building available for Sale in Oreland, PA
- + Retail space situated on +/- 0.43 Acres of Land
- + ±10 parking spaces available on site
- + One drive-thru lane
- + Nearby tenants include Giant, McDonald's, FedEx, Dunkin, Wawa, CVS Pharmacy, ACME, Family Dollar, Burger King, Mavis Discount Tire and many more.
- + Zoning - "B1"- Business Zoning District
- + Within 8.6 miles of I-276 and minutes from Route 73, Route 309 and Route 152



1401 Bruce Road
Oreland, PA 19075

For Sale



2024 DEMOGRAPHICS	1 Mile	3 Miles	5 Miles
Population	9,718	88,944	292,062
Average HH Income	\$144,767	\$153,811	\$135,727
Median HH Income	\$112,823	\$112,116	\$93,405
Households	3,509	33,753	117,386
Daytime Population	7,102	88,384	290,864


5 Mile Population
292,062


5 Mile Average HH
Income:
\$135,727


5 Mile Median HH
Income
\$93,405

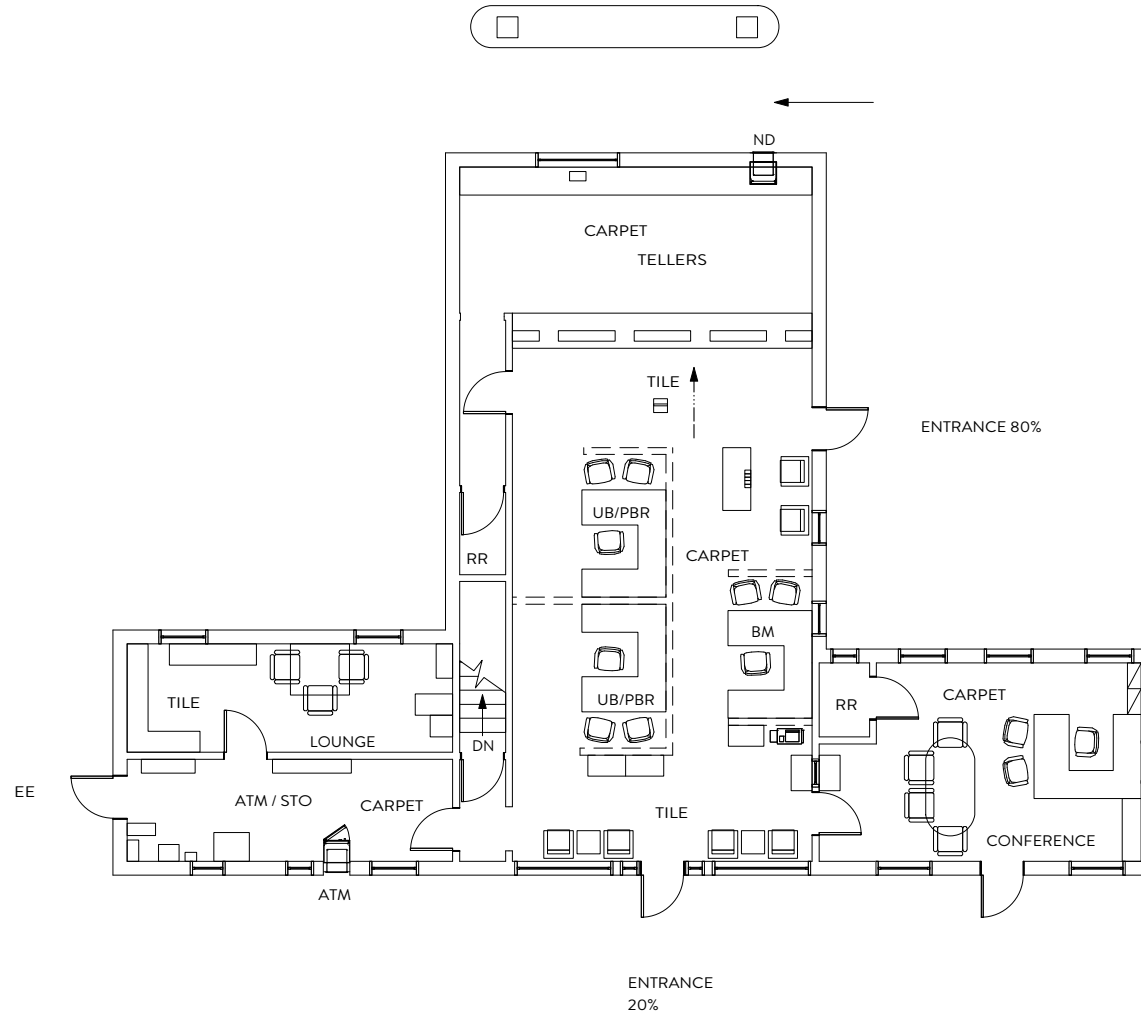
© 2025 CBRE, Inc. All rights reserved. This information has been obtained from sources believed reliable, but has not been verified for accuracy or completeness. You should conduct a careful, independent investigation of the property and verify all information. Any reliance on this information is solely at your own risk. CBRE and the CBRE logo are service marks of CBRE, Inc. All other marks displayed on this document are the property of their respective owners, and the use of such logos does not imply any affiliation with or endorsement of CBRE. Photos herein are the property of their respective owners. Use of these images without the express written consent of the owner is prohibited.



1401 Bruce Road
Oreland, PA 19075

For Sale

Floor Plan



First Floor

Contact Us

Jody King
Senior Vice President
+1 610 398 3384
jody.king@cbre.com
Licensed: PA

Pam Hall
Associate
+1 610 573 5341
pamela.hall@cbre.com
Licensed: PA

CBRE, Inc.
1275 Glenlivet Drive, Suite 320
Allentown, PA 18106
+1 610 398 6900
Licensed Real Estate Broker

