

FOR LEASE
OFFICE BUILDING
&
GROUND LEVEL
RETAIL



225 HOLMES AVENUE

Located in Downtown Huntsville, 225 Holmes is a luxury five-story mixed-use development in the heart of Huntsville's business district. This property is situated within walking distance of numerous restaurants, retail, offices, and hotels, as well as across the street from a six-story city parking deck.



WESLEY CRUNKLETON, CPM
Principal
256-536-8809
wesley@crunkletonassociates.com

ERIC ST. JOHN, CCIM
Vice President
256-384-7603
eric@crunkletonassociates.com

ERIC GONZALEZ-TABLADA
Director of Retail
256-384-7601
ericgt@crunkletonassociates.com

PROPERTY HIGHLIGHTS



ADDRESS

225 Homes Ave NE
Huntsville, AL 35801



FOR LEASE

Office and Retail Space



SQ FT AVAILABLE

Office: 2nd Floor - 14,612 SF
3rd Floor - 14,589 SF
4th Floor - 14,522 SF

Retail: Suite C - 2,612 SF
Suite D - 2,909 SF
(Can be combined)



PRICE

Call For Pricing



ABOUT THE PROPERTY

- Conveniently located on the corner of Holmes Avenue and Greene Street
- Floor plates provide for flexible, divisible floor plans to meet your office needs.
- Parking for the property is located across the street at the Greene Street city parking deck, a six-story garage with approximately 490 parking spaces. Spots can be rented from the City of Huntsville.
- Office space is available on the second, third, and fourth floors with plenty of windows and natural light.
- Easy access to and from Interstate 565 and Memorial Parkway.
- Situated in the city's main business district with a daytime population of 74,940 within a 3-mile radius.
- High visibility on a highly trafficked Downtown Huntsville street.
- Site is adjacent to downtown retailers and restaurants including: SiP, Rao's Pizza, Dirty Olive, One Eleven, Catch 25 Seafood, and DGX.
- Also near multiple other retail and restaurant options, Melt, Moon Bakeshop, Oshi Poke Bowl, Honest Coffee Roasters, Elitaire Boutique, Roosevelt & Co., Caley Paige Home & Gifts, Sea Salt Oyster Bar, Zoom Indoor Cycling, Wheelhouse Salon, and many more.
- Near multiple residential developments including: The Avenue, Belk Hudson Lofts, and 301 Holmes.
- Within walking distance of more than 1,000 hotel rooms: 106 Jefferson Curio by Hilton, Embassy Suites, Hampton Inn & Suites, Springhill Suites, and AC Hotel by Marriot—more to come.
- Short drive from Huntsville Hospital medical district and Five Points neighborhood.
- Site has above average walkability score.



INTERIOR PHOTOS- OFFICE & LOBBY



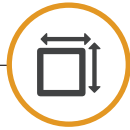
CRUNKLETON
COMMERCIAL REAL ESTATE GROUP

WESLEY CRUNKLETON, CPM
Principal
256-536-8809
wesley@crunkletonassociates.com

ERIC ST. JOHN, CCIM
Vice President
256-384-7603
eric@crunkletonassociates.com

ERIC GONZALEZ-TABLADA
Director of Retail
256-384-7601
ericgt@crunkletonassociates.com

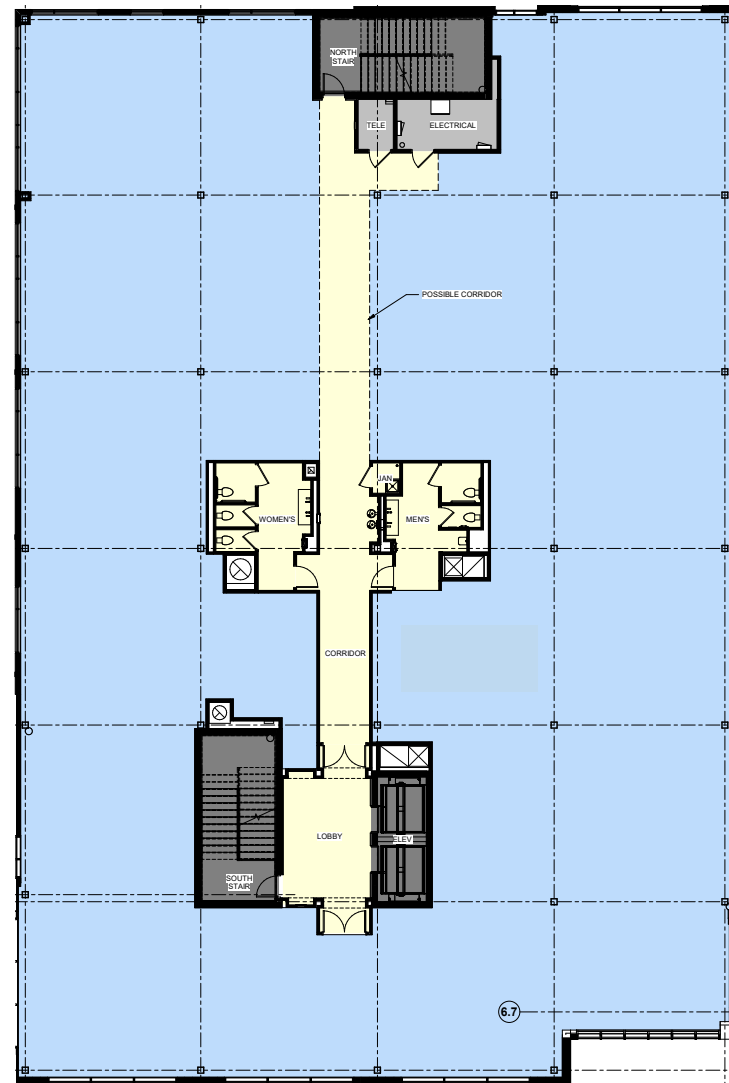
OFFICE FLOOR PLANS



2nd Floor - 14,612 SF

3rd Floor - 14,589 SF

4th Floor - 14,522 SF



Greene Street NE

Holmes Avenue NE



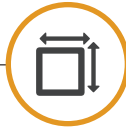
CRUNKLETON
COMMERCIAL REAL ESTATE GROUP

WESLEY CRUNKLETON, CPM
Principal
256-536-8809
wesley@crunkletonassociates.com

ERIC ST. JOHN, CCIM
Vice President
256-384-7603
eric@crunkletonassociates.com

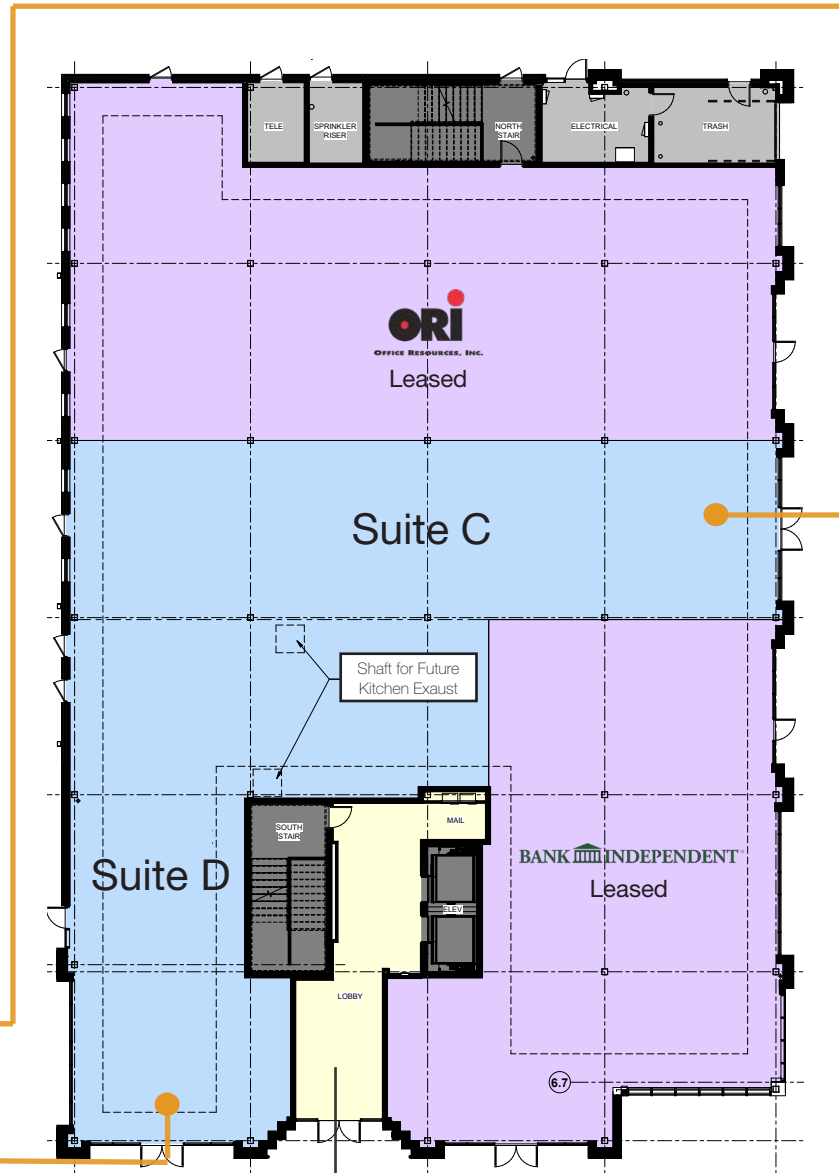
ERIC GONZALEZ-TABLADA
Director of Retail
256-384-7601
ericgt@crunkletonassociates.com

GROUND LEVEL RETAIL FLOOR PLAN



Suite C - 2,612 SF

Suite D - 2,909 SF



Common
Lobby Area
for Building
Tenants

Holmes Avenue NE

Greene Street NE



CRUNKLETON
COMMERCIAL REAL ESTATE GROUP

WESLEY CRUNKLETON, CPM
Principal
256-536-8809
wesley@crunkletonassociates.com

ERIC ST. JOHN, CCIM
Vice President
256-384-7603
eric@crunkletonassociates.com

ERIC GONZALEZ-TABLADA
Director of Retail
256-384-7601
ericgt@crunkletonassociates.com

AREA MAP



225 HOLMES AVENUE

HUNTSVILLE, AL



CRUNKLETON
COMMERCIAL REAL ESTATE GROUP

300 Pratt Ave NE Huntsville AL 35801
256-536-8809
crunkletonassociates.com

WESLEY CRUNKLETON, CPM
Principal
256-536-8809
wesley@crunkletonassociates.com

ERIC ST. JOHN, CCIM
Vice President
256-384-7603
eric@crunkletonassociates.com

ERIC GONZALEZ-TABLADA
Director of Retail
256-384-7601
ericgt@crunkletonassociates.com