

# MACARTHUR MILLS OFFICE

**NOW LEASING**



## FEATURES

The Property consist of single-story buildings

Total 52,974 SF located in Carrollton, Texas.

The property is easily accessible from President George Bush Turnpike (190/SH 161 ) and Stemmons Freeway ( I-35). Trinity Mills DART Rail Station is 0.4miles from the Property and the Dickerson @ Macarthur DART Bus Stop is 0.3 mils.

## PROPERTY INFORMATION

- Rentable Area: 52,974 square feet
- 3:1000 parking ratio
- Multi-tenant buildings
- 100% office

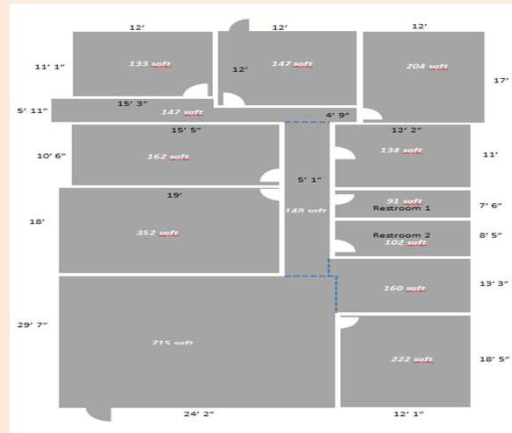
## SPACE AVAILABLE

- Suite 144 → 2,717 SF
- Suite 200 → 2,682 SF
- Suite 248 → 3,923 SF

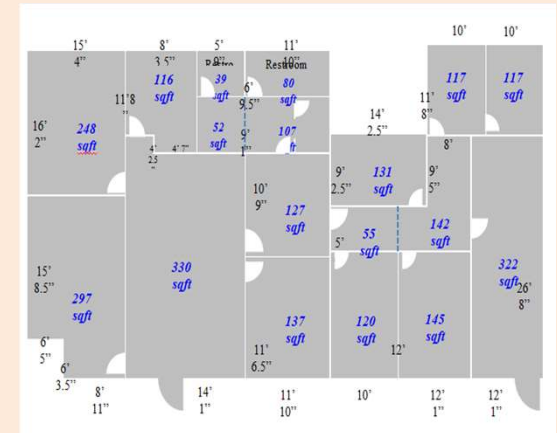
**Contact Freddie Lee 214-243-1898 [freddie@mpgroupus.com](mailto:freddie@mpgroupus.com)**



Suite 144 2,717 SF



Suite 200 2,682 SF

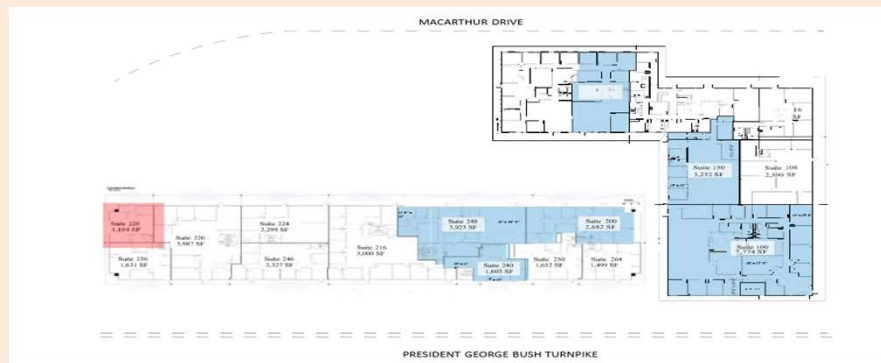


Suite 248 3,923 SF



M & P Group Management  
P.O Box 59624  
Dallas, TX 75229  
accounting@mpgroupus.com

Freddie Lee  
Office 972-243-1898  
Ext.2002  
[freddie@mpgroupup.com](mailto:freddie@mpgroupup.com)  
[management@mpgroupus.com](mailto:management@mpgroupus.com)



**1445 MACARTHUR DR, CARROLLTON TX 75007**

FOR LEASE > FLEX SPACE

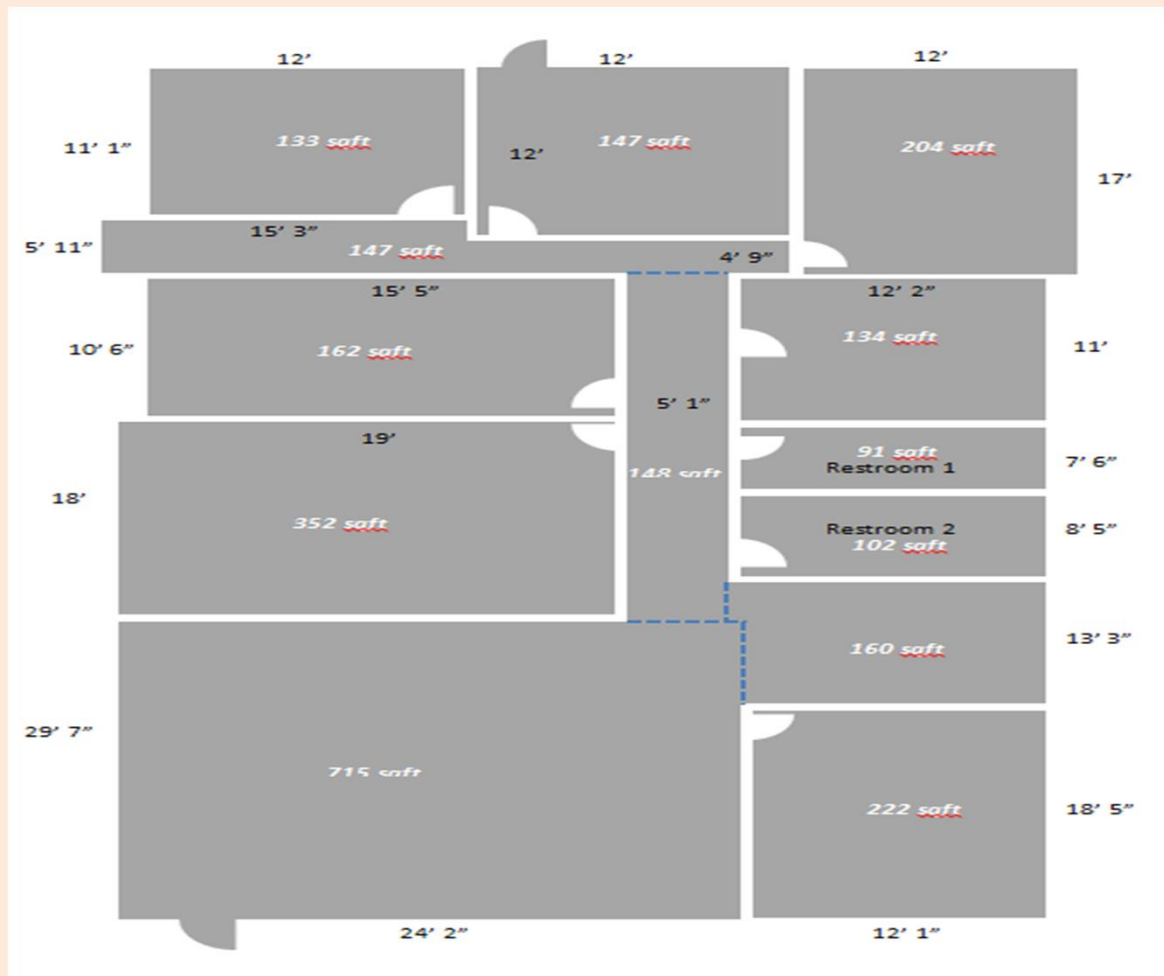
# 2,717 SF Available

1445 MACARTHUR DR, CARROLLTON TX 75007



M & P Group Management  
P.O Box 59624  
Dallas, TX 75229  
accounting@mpgroupus.com

Suite 144



Contact:

Freddie Lee  
Office 972-243-1898  
Ext.2002  
[freddie@mpgroupup.com](mailto:freddie@mpgroupup.com)  
[management@mpgroupus.com](mailto:management@mpgroupus.com)

FOR LEASE > FLEX SPACE

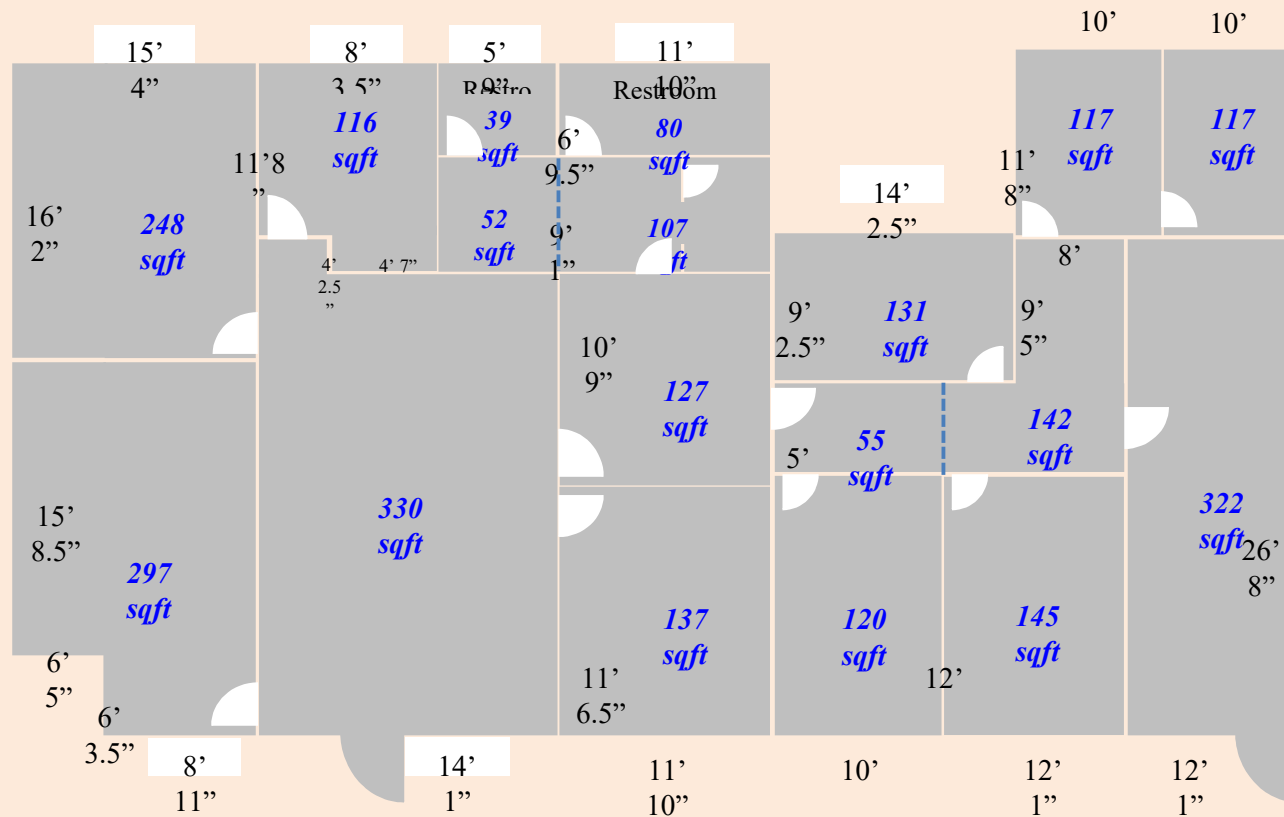
# 2,682 SF Available

1445 MACARTHUR DR, CARROLLTON TX 75007



M & P Group Management  
P.O Box 59624  
Dallas, TX 75229  
accounting@mpgroupus.com

## Suite 200



### Contact:

Freddie Lee  
Office 972-243-1898  
Ext.2002  
[freddie@mpgroupup.com](mailto:freddie@mpgroupup.com)  
[management@mpgroupus.com](mailto:management@mpgroupus.com)

FOR LEASE > FLEX SPACE

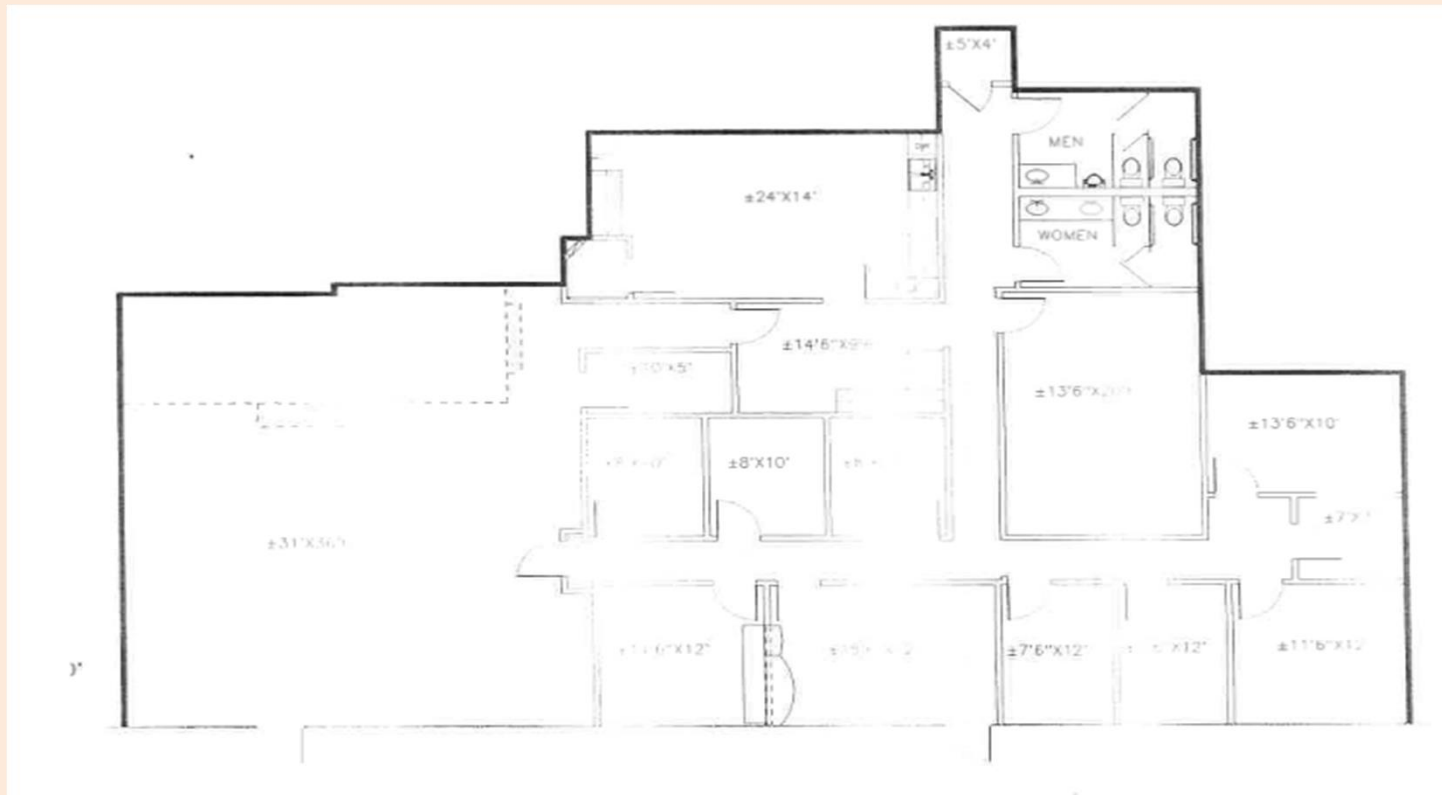
**3,923 SF Available**

1445 MACARTHUR DR, CARROLLTON TX 75007



M & P Group Management  
P.O Box 59624  
Dallas, TX 75229  
accounting@mpgroupus.com

Suite 248



**Contact:**

Freddie Lee  
Office 972-243-1898  
Ext.2002  
[freddie@mpgroupup.com](mailto:freddie@mpgroupup.com)  
[management@mpgroupus.com](mailto:management@mpgroupus.com)