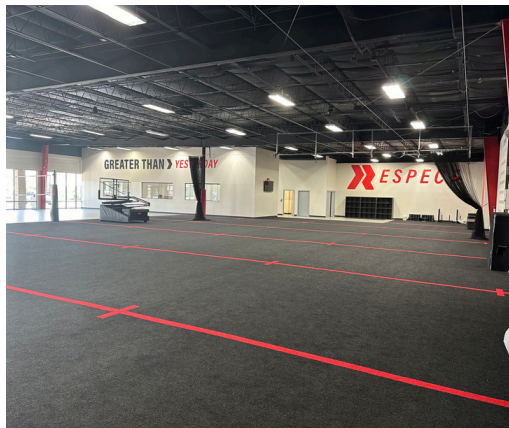




FOR LEASE

PEAK LIFESTYLE CENTER

2340-2460 MONTEBELLO SQUARE DR., COLORADO SPRINGS, CO 80918



PROPERTY overview

Join Colorado Springs' most vibrant mix of tenants, curated for the Colorado Lifestyle. Strong demographics and traffic counts, along with great signage and ample parking. Now available for lease is the former Redline Athletics space. Brand new buildout with fresh turf, baseball cages, newly updated ADA restrooms, volleyball court, and weight training area. Call today for more information.

Information contained herein, while not guaranteed, is from sources we believe reliable. Price, terms and conditions are subject to change without notice. Thrive Commercial Partners acting as Landlord's/Seller's Agent: A Landlord's/Seller's agent works solely on behalf of the Landlord/Seller to promote the interests of the Landlord/Seller with the utmost good faith, loyalty and fidelity. The agent negotiates on behalf of and acts as the advocate for the Landlord/Seller.

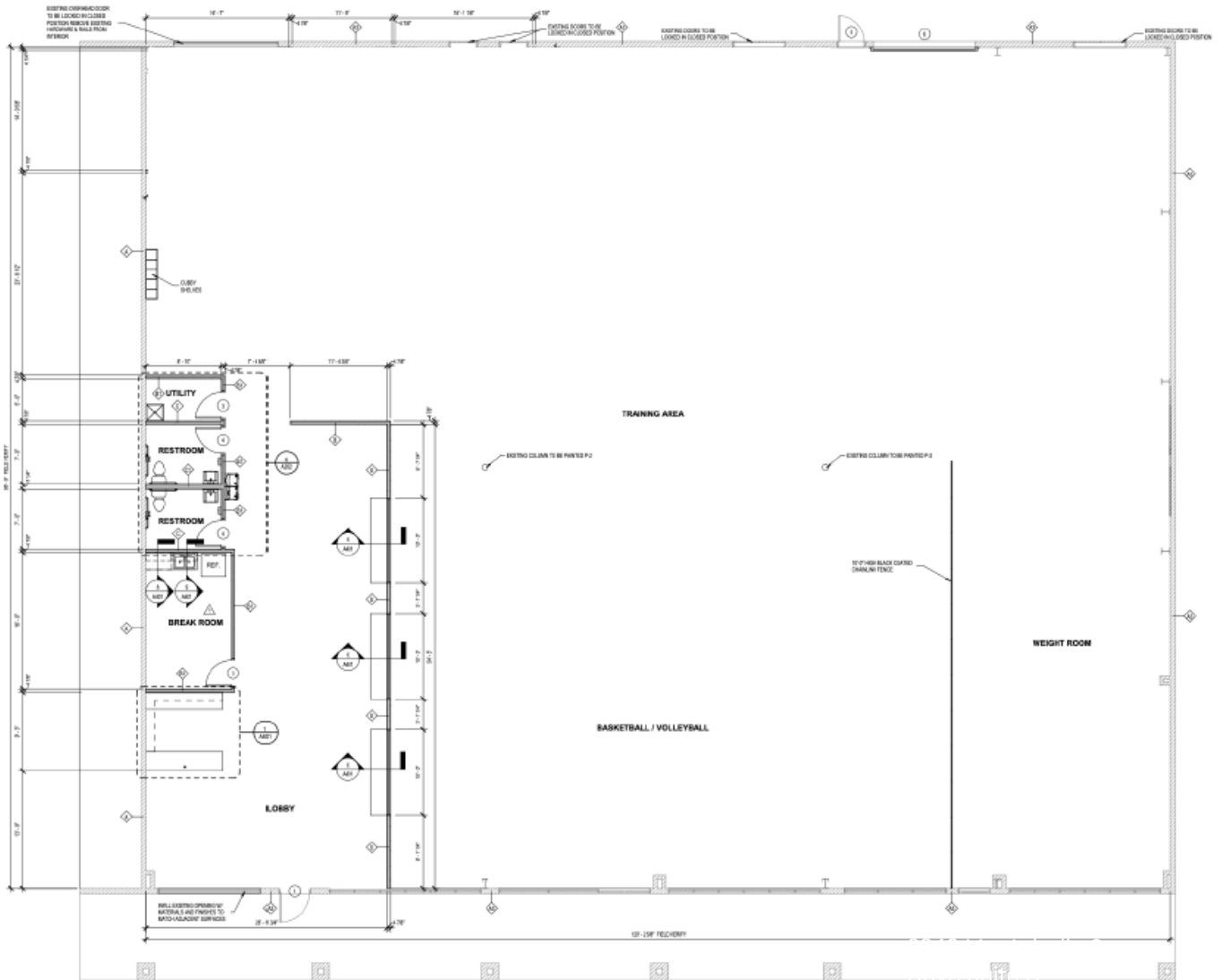
OFFERING summary

Suite:	2340 Montebello Square Drive Suite D
Available SF:	12,000 SF
Lease Rate:	\$12
NNN:	\$5.21 SF/yr (2024 Est.)

CONTACT US

LOGAN HARRISON | 719.314.6833
logan@thrivecommercialpartners.com

BUILDING floorplan



Information contained herein, while not guaranteed, is from sources we believe reliable. Price, terms and conditions are subject to change without notice. Thrive Commercial Partners acting as Landlord's/Seller's Agent: A Landlord's/Seller's agent works solely on behalf of the Landlord/Seller to promote the interests of the Landlord/Seller with the utmost good faith, loyalty and fidelity. The agent negotiates on behalf of and acts as the advocate for the Landlord/Seller.

CONTACT US

LOGAN HARRISON | 719.314.6833
logan@thrivecommercialpartners.com

PO Box 1329 | Colorado Springs, CO 80901 | 719.530.4400 | thrivecommercialpartners.com



AREA demographics

1 MILE

2023 Total Households	6,418
2023 Total Population	15,674
Median HH Income	\$84,783

3 MILES

2023 Total Households	45,040
2023 Total Population	108,585
Median HH Income	\$88,489

5 MILES

2023 Total Households	111,545
202 Total Population	278,814
Median HH Income	\$94,248

TRAFFIC COUNT

(N. ACADEMY & MONTEBELLO): 41,694 VPD

TENANT list

Suite Number	RETAILER
2454	Epic Mountain Gear
2450	Wild Birds Unlimited
2458	Lost Friend Brewing Co.
2460	ALMAGRE Venue + Bar
2360 H1	Hold Fast Cafe
2360 H2	Hold Fast Coffee Co.
2360 G	The Rage Salon & Spa

Suite Number	RETAILER
2360 F	Ultimate Barber Co.
2360 E	Zoom Room
2360 D	Universal Kempo Karate
2360 B & C	Cies Mixed Martial Arts
2360 A	Goodwill of Colorado: Journey's
2350	Urban Lights
2340 D, E & F	AVAILABLE
2340 A & B	Super Quality Cleaners

Information contained herein, while not guaranteed, is from sources we believe reliable. Price, terms and conditions are subject to change without notice. Thrive Commercial Partners acting as Landlord's/Seller's Agent: A Landlord's/Seller's agent works solely on behalf of the Landlord/Seller to promote the interests of the Landlord/Seller with the utmost good faith, loyalty and fidelity. The agent negotiates on behalf of and acts as the advocate for the Landlord/Seller.

CONTACT US

LOGAN HARRISON | 719.314.6833
 logan@thrivecommercialpartners.com

PO Box 1329 | Colorado Springs, CO 80901 | 719.530.4400 | thrivecommercialpartners.com