

833 MARKET STREET

FOR LEASE | CREATIVE OFFICE IN HISTORIC PROPERTY

TCP
TOUCHSTONE
COMMERCIAL PARTNERS



WWW.TCPRE.COM

ZACH HAUPERT zhaupert@tcpre.com
D 415.539.1121 | C 415.812.1219

MICHAEL SANBERG msanberg@tcpre.com
D 415.539.1103 | C 415.697.6088

TREVOR GUDIM trevor@tcpre.com
D 415.539.1122 | C 858.922.2632

833 MARKET STREET

PROPERTY SUMMARY

ADDRESS

833 Market Street, San Francisco, CA 94103

AVAILABLE SPACE

Suite 801: +/- 2,334 Square Feet

Suite 304: +/- 2,700 Square Feet

RENTAL RATE

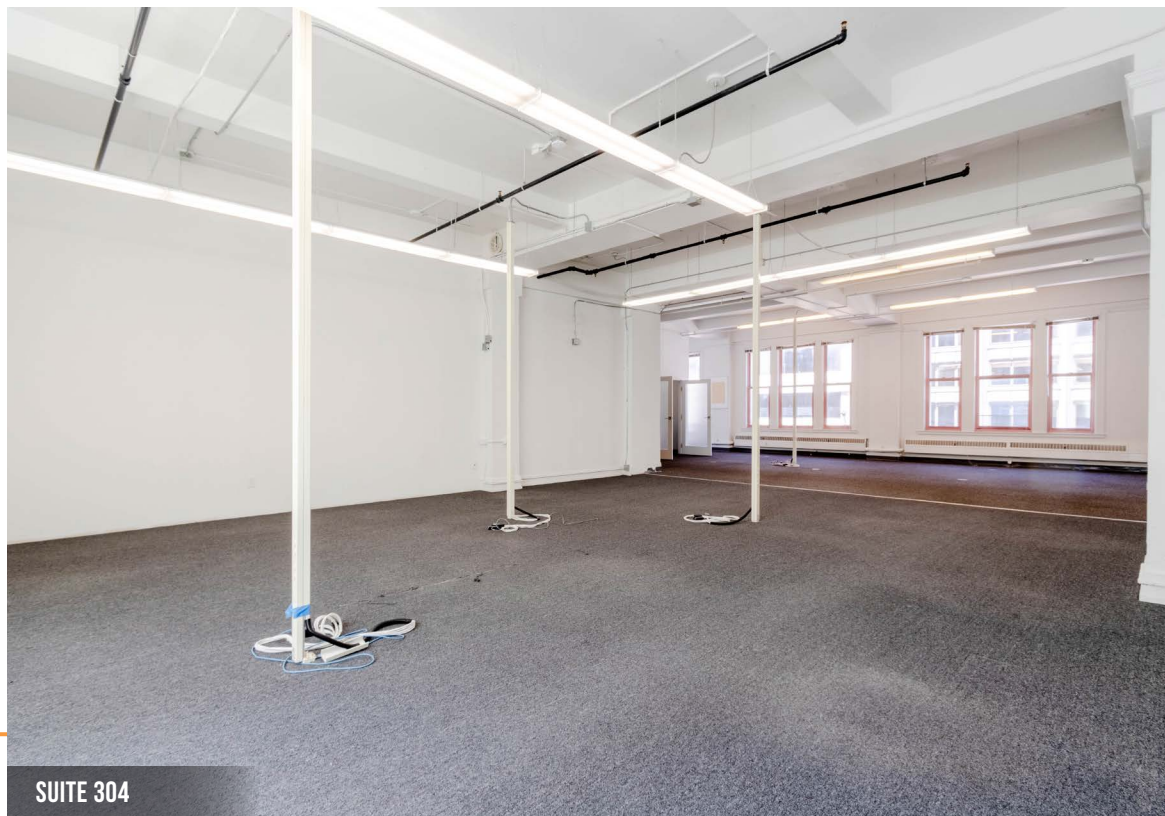
\$27 / Square Foot / Year, Industrial Gross

AVAILABLE

Immediately

BUILDING ATTRIBUTES

- + Creative Office Space
- + Fantastic Natural Light
- + Open Plan w/ Conference Rooms
- + Phone Booths
- + Kitchenettes
- + Shared Access to Event & Conference Space
- + Flexible Terms & Conditions
- + Freight Elevator to Unit
- + Walkable To BART, Muni, & other Neighborhood Amenities



833 MARKET STREET

PROPERTY SUMMARY | SUITE 801

ADDRESS

833 Market Street, San Francisco, CA 94103

AVAILABLE SPACE

Suite 801: +/- 2,334 Square Feet

RENTAL RATE

\$27 / Square Foot / Year, Industrial Gross

AVAILABLE

Immediately

BUILDING ATTRIBUTES

- + Large Open Plan
- + Original Refinished Wood Floors
- + Ample Natural Light
- + 13' Ceiling Heights
- + One (1) Glass Conference
- + Possibility To Furnish
- + Private Kitchenette Can Be Installed



SUITE 801



SUITE 801

833 MARKET STREET

PROPERTY SUMMARY | SUITE 304

ADDRESS

833 Market Street, San Francisco, CA 94103

AVAILABLE SPACE

Suite 304: +/- 2,700 Square Feet

RENTAL RATE

\$27 / Square Foot / Year, Industrial Gross

AVAILABLE

Immediately



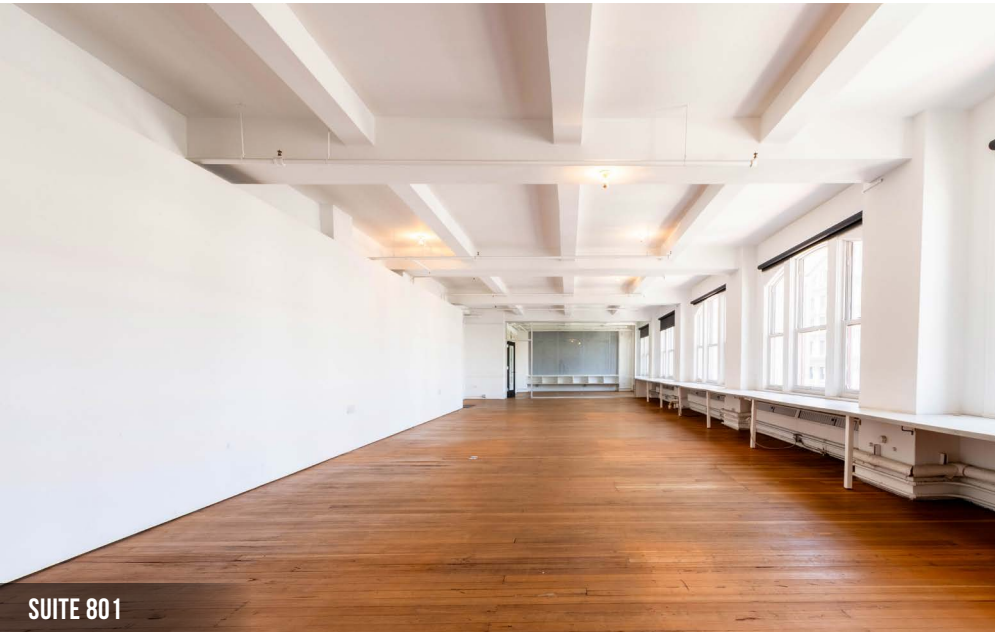
SUITE 304

BUILDING ATTRIBUTES

- + Two (2) Phone Booths
- + One (1) Board Room
- + 15' Ceilings
- + Operable Windows
- + Recently Renovated Elevators
- + Private Kitchenette
- + Private Restroom



SUITE 304



833 MARKET STREET

LOCATION OVERVIEW

Desirable Union Square location, walkable to nearby amenities, public transportation and to surrounding neighborhoods.



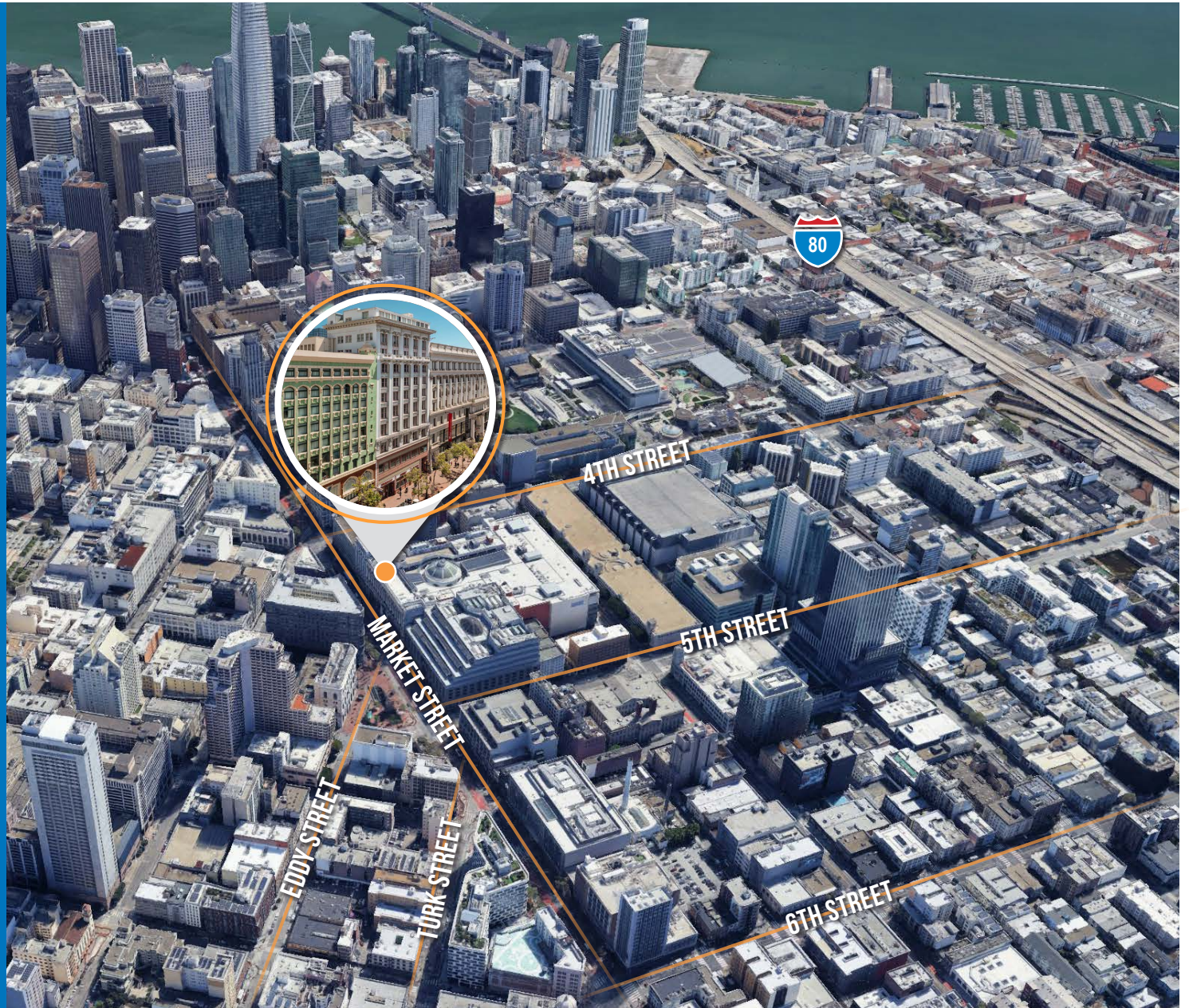
01 MIN to Market St Muni
01 MIN to Powell St BART
10 MIN to 4th St Caltrain



06 MIN to SOMA
09 MIN to Financial District
14 MIN to Mission District



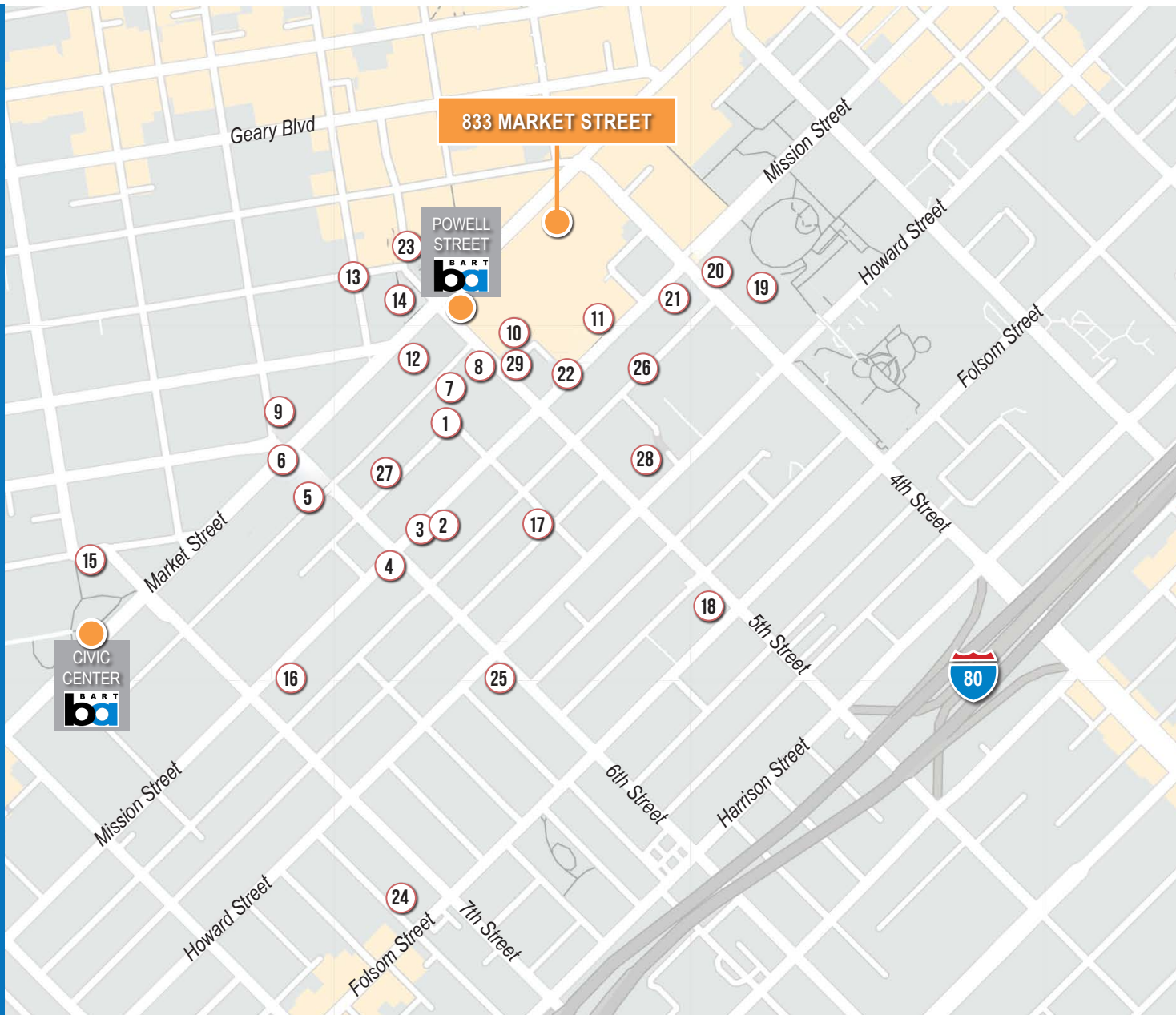
07 MIN to 101 On-Ramp
08 MIN to 280 On-Ramp
09 MIN to 80 On-Ramp

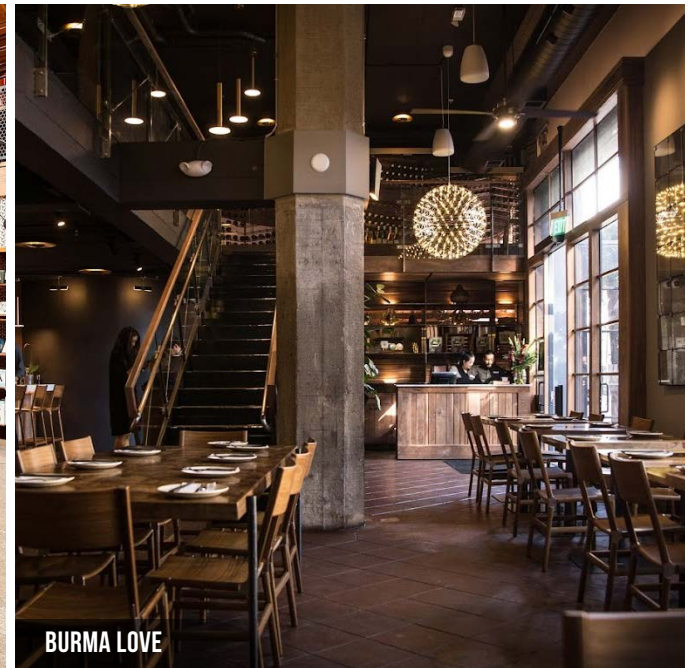
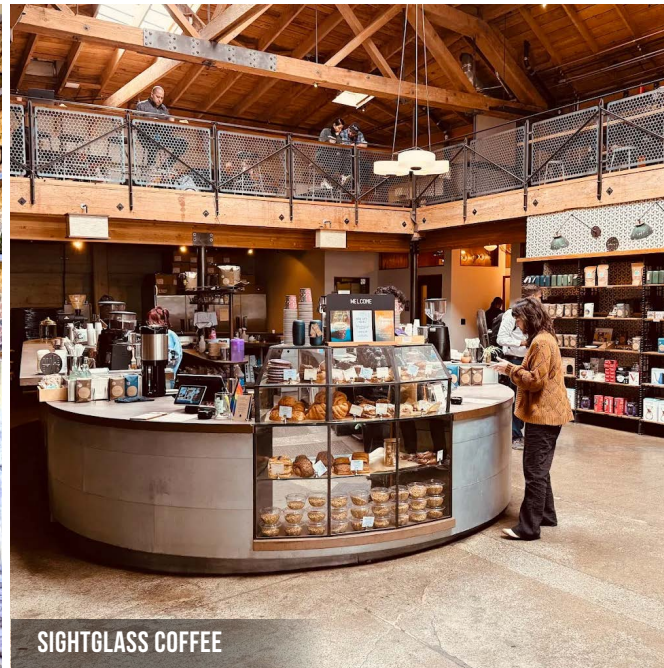
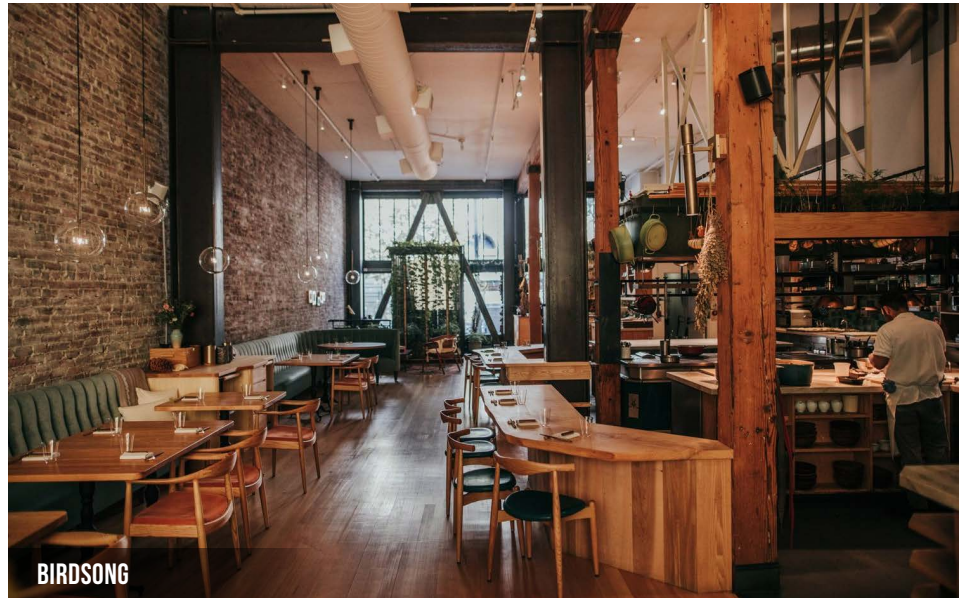


833 MARKET STREET

NEARBY AMENITIES

- 1..... 54 Mint Cucina Romana
- 2..... Trellis Coworking
- 3..... The Pawn Shop
- 4..... Miss Saigon
- 5..... Montesacro Pinseria - SoMa
- 6..... Taqueria Cancun
- 7..... Burma Love
- 8..... Mo'z Cafe
- 9..... The Warfield
- 10..... San Francisco Centre
- 11..... Bloomingdale's
- 12..... The Melt
- 13..... Pandora Karaoke & Bar
- 14..... Carl's Jr.
- 15..... Arsicault Bakery Civic Center
- 16..... Birdsong
- 17..... Java Trading Co.
- 18..... Mr. East Kitchen
- 19..... Metreon
- 20..... Target
- 21..... Starbucks
- 22..... Executive Order Bar & Lounge
- 23..... Barbary Coast Pastry & Coffee
- 24..... Sightglass Coffee
- 25..... Bini's Kitchen
- 26..... 5th & Mission Garage
- 27..... Priority Parking Lot
- 28..... InterContinental SF
- 29..... Hotel Zetta





833 MARKET STREET



Corp. Lic. 01112906
www.tcpre.com

ZACH HAUPERT

D 415.539.1121 C 415.812.1219
zhaupert@tcpre.com DRE # 01822907

MICHAEL SANBERG

D 415.539.1103 C 415.697.6088
msanberg@tcpre.com DRE # 01930041

TREVOR GUDIM

D 415.539.1122 C 858.922.2632
trevor@tcpre.com DRE # 01979980

This document has been prepared by Touchstone Commercial Partners for advertising and general information only. Touchstone Commercial Partners makes no guarantees, representations or warranties of any kind, expressed or implied, regarding the information including, but not limited to, warranties of content, accuracy and reliability. Any interested party should undertake their own inquiries as to the accuracy of the information. Touchstone Commercial Partners excludes unequivocally all inferred or implied terms, conditions and warranties arising out of this document and excludes all liability for loss and damages arising there from. This publication is the copyrighted property of Touchstone Commercial Partners and/or its licensor(s). ©2025. All rights reserved.