

FOR LEASE



B

Waterfall Towers
2455 Bennett Valley Road, Santa Rosa
Great selection of Suites from ± 509 SF up to $\pm 4,719$ SF



**Newmark
Knight Frank**

EXCLUSIVELY MARKETING BY:

Barry Palma, CCIM
bpalma@ngkf.com
707.583.8410
CA RE LIC #00901364



**BASIN STREET
PROPERTIES**

basin-street.com

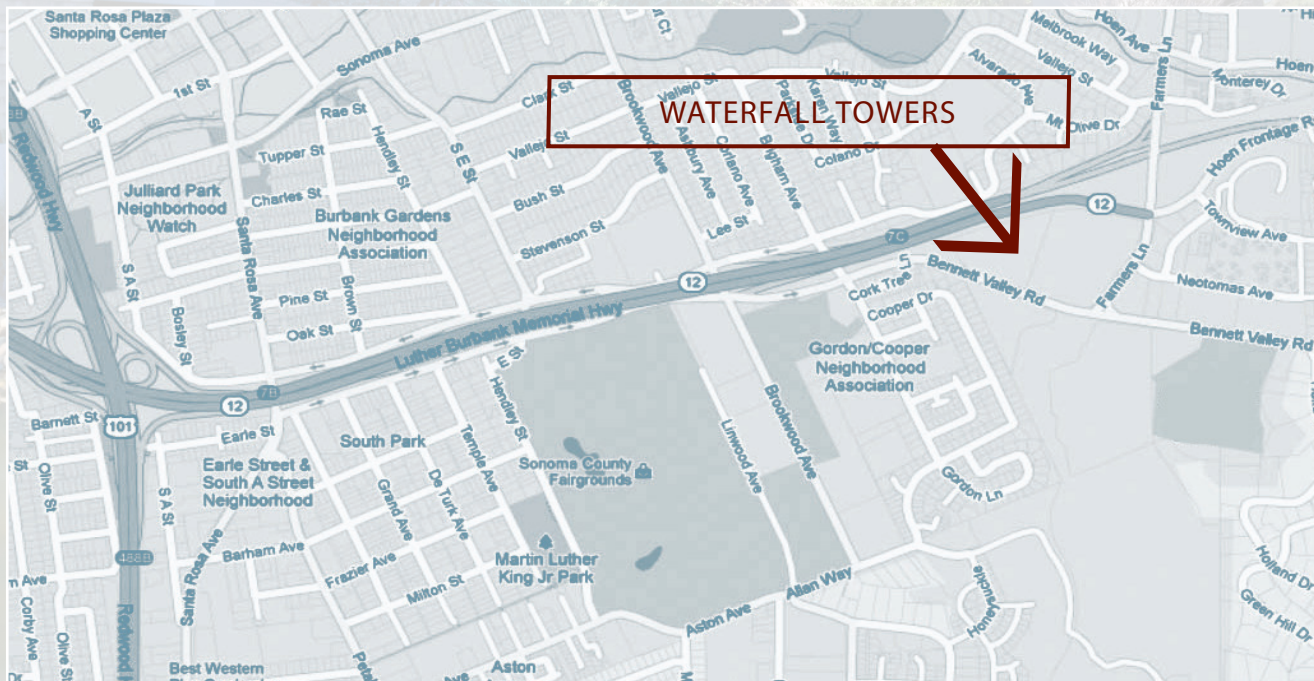
FOR LEASE

Waterfall Towers

2455 Bennett Valley Road, Santa Rosa

- Within walking distance to Farmers Lane Plaza including Starbucks, Togos and Rite Aid with a short drive to Downtown and Montgomery Village Shopping Center
- Positive work environment situated on ±5 acres in a three-building office campus overlooking the hills of Santa Rosa
- On-site conference room
- Abundant free parking

Variety of tenants include such firms as: WedBush Securities Inc., Team Logic IT, Structural Design Group, Pooley & Pooley CPAs, Jeanne Levin Attorney, Transcon Engineering, Berkhoff Real Estate, GoLocal.



111 Santa Rosa Avenue, Suite 110
Santa Rosa, CA 95404 T 707.583.8400

ngkf.com



basin-street.com

FOR LEASE

Waterfall Towers

2455 Bennett Valley Road, Santa Rosa



FOR LEASE

Waterfall Towers

2455 Bennett Valley Road, Santa Rosa



Building A
First Floor



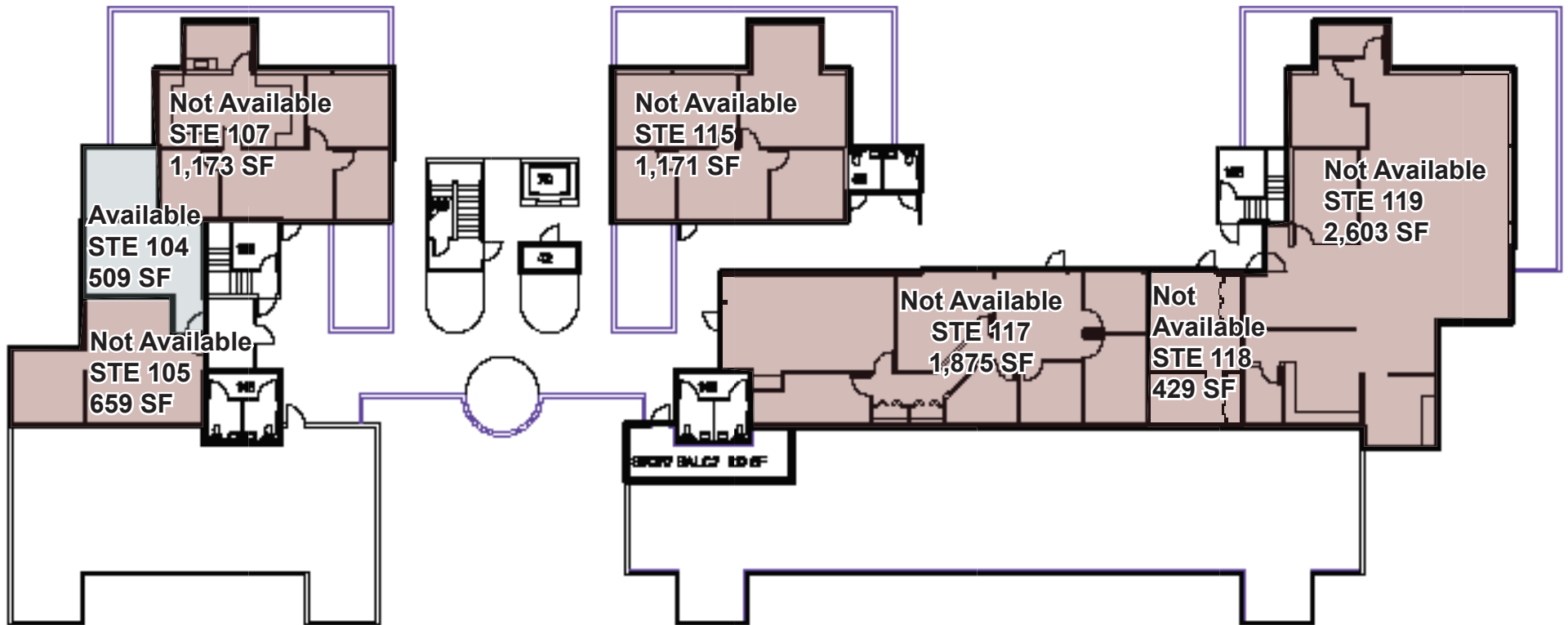
FOR LEASE

Waterfall Towers

2455 Bennett Valley Road, Santa Rosa



Building B
First Floor



FOR LEASE

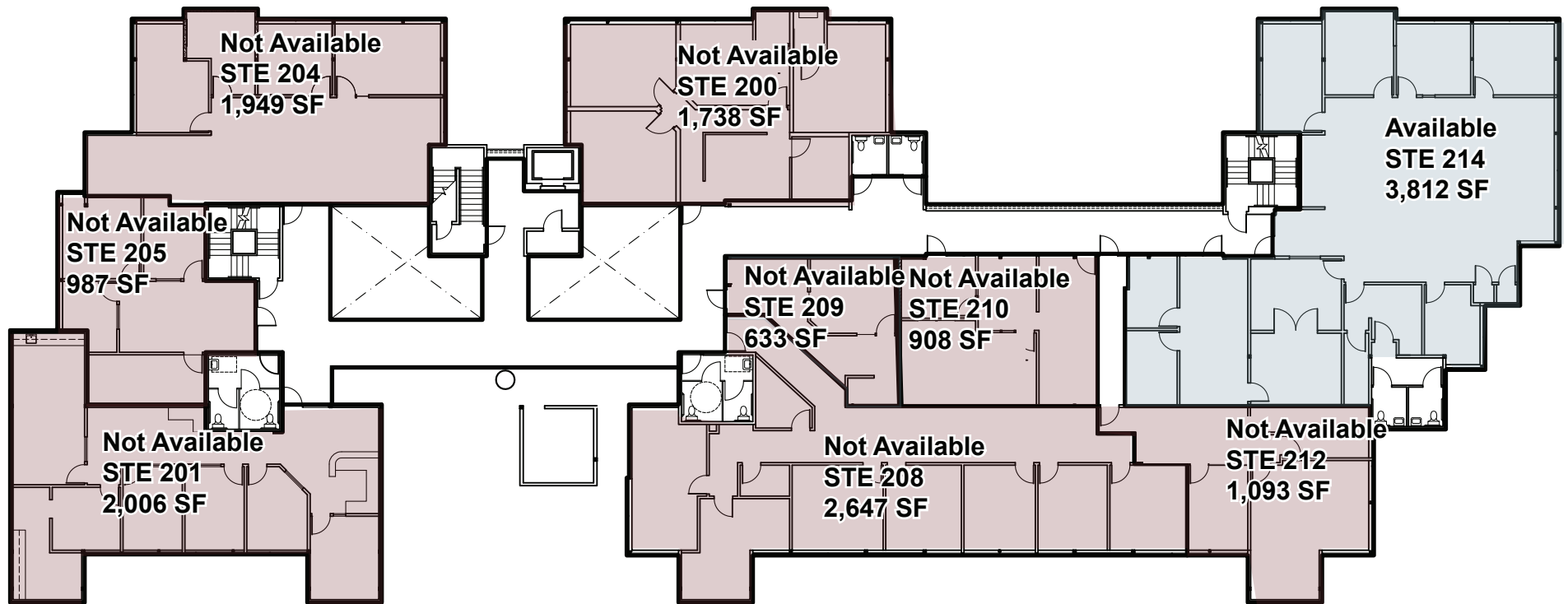
Waterfall Towers

2455 Bennett Valley Road, Santa Rosa



BASIN STREET
PROPERTIES

Building B
Second Floor



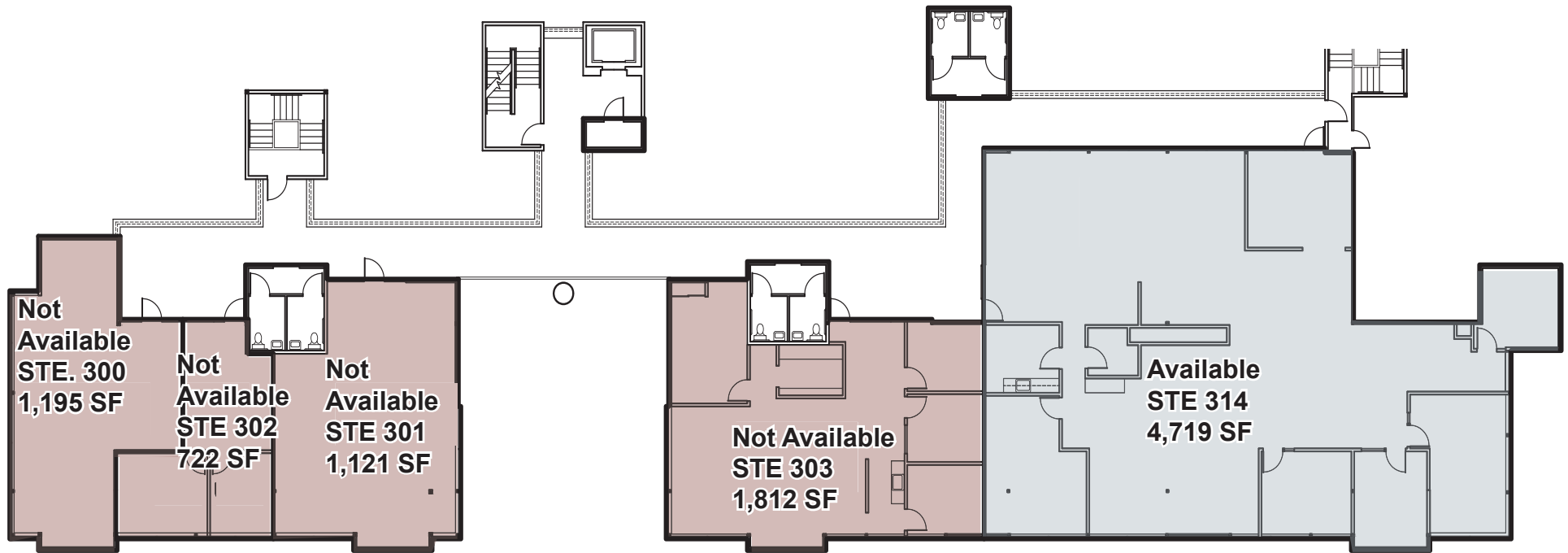
FOR LEASE

Waterfall Towers

2455 Bennett Valley Road, Santa Rosa



Building B
Third Floor



FOR LEASE

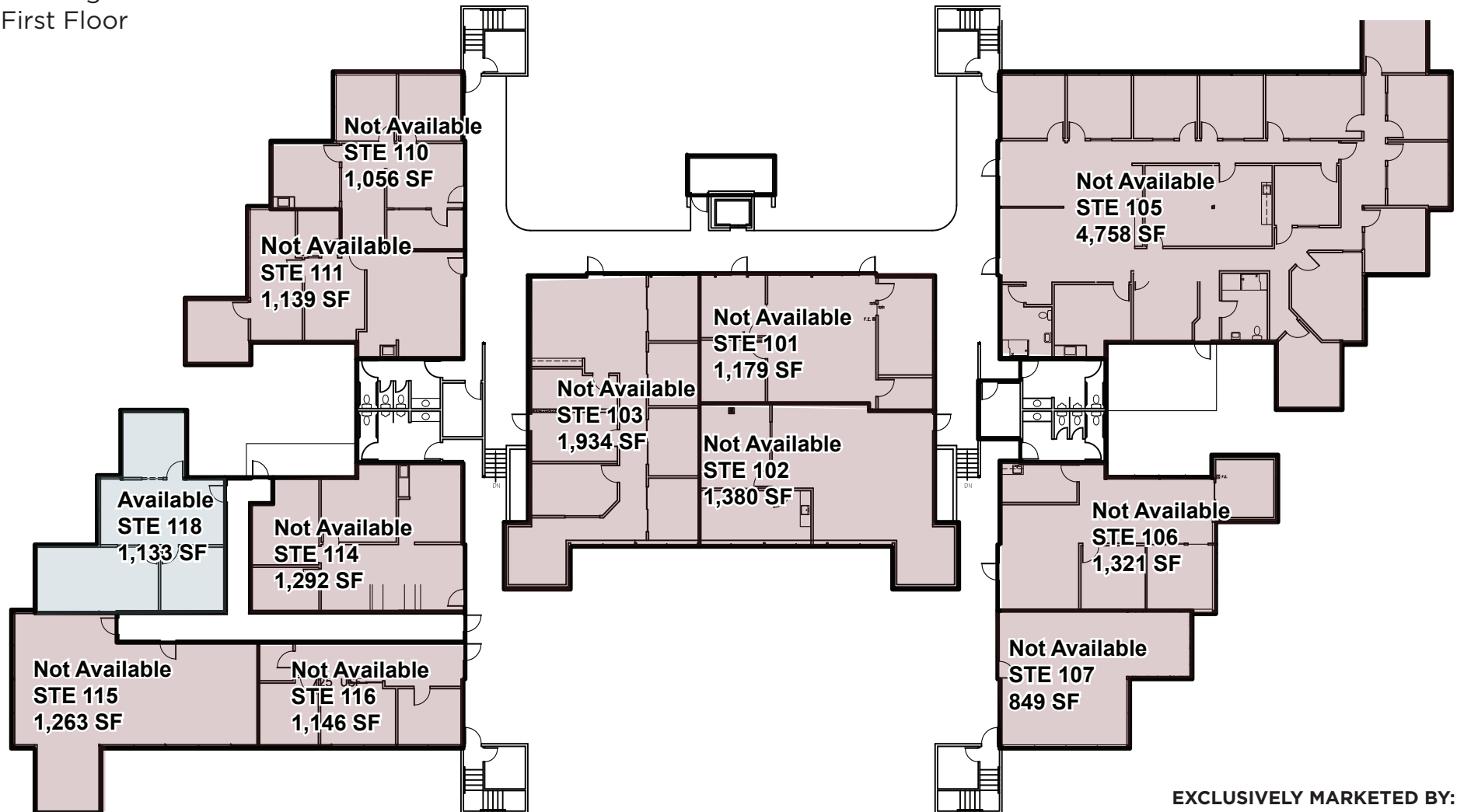
Waterfall Towers

2455 Bennett Valley Road, Santa Rosa



BASIN STREET
PROPERTIES

Building C
First Floor



EXCLUSIVELY MARKETING BY:

Barry Palma, CCIM
bpalma@ngkf.com

707.583.8410

CA RE LIC #00901364



The distributor of this communication is performing acts for which a real estate license is required. The information contained herein has been obtained from sources deemed reliable but has not been verified and no guarantee, warranty or representation, either express or implied, is made with respect to such information. Terms of sale or lease and availability are subject to change or withdrawal without notice.10/2019