



180 Howard Street

SUITE 1220, SAN FRANCISCO, CA

FOR SUBLEASE



±1,493
RSF Office
Opportunity
Minutes from
the Ferry
Building and
Embarcadero
BART Station

PAUL PICCIANI

415 229 8973

paul.picciani@kidder.com

LIC N° 01759888

**Kidder
Mathews**

This information supplied herein is from sources we deem reliable. It is provided without any representation, warranty, or guarantee, expressed or implied as to its accuracy. Prospective Buyer or Tenant should conduct an independent investigation and verification of all matters deemed to be material, including, but not limited to, statements of income and expenses. Consult your attorney, accountant, or other professional advisor.

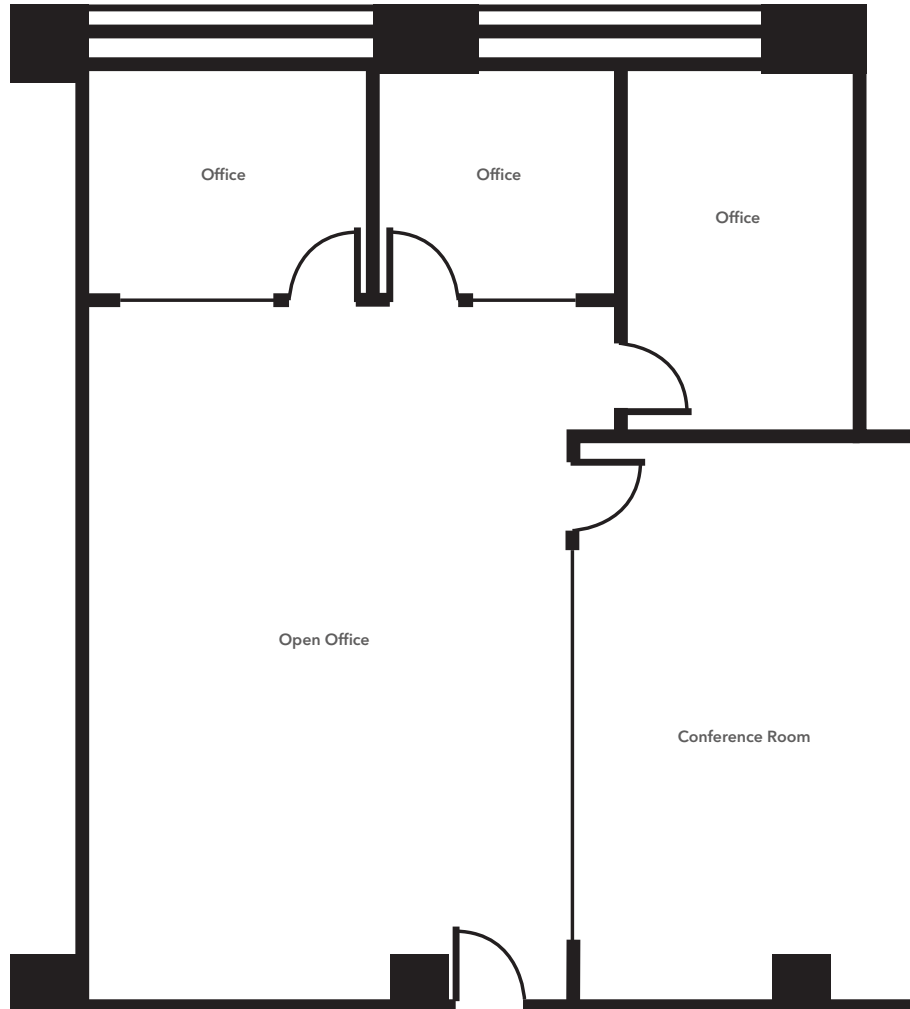
KIDDER.COM

FOR SUBLEASE

180 Howard Street

SUITE 1220, SAN FRANCISCO, CA

Suite 1220



FLOOR PLAN NOT
DRAWN TO SCALE



CLICK TO VIEW
360° VIRTUAL TOUR

±1,493 RSF

SINGLE-DOOR entry off
elevator for good identity

PLUG & PLAY (no kitchen)

THREE (3) windowline
privates

GLASS conference room

OPEN space for 6-8

GOOD natural light

UPDATED 2X2 lighting

TWO (2) blocks from
Embarcadero BART

BIKE garage in building

BIKES OK in suite

AVAILABLE upon consent

LEX 5/31/24

ASKING low \$30s/fully
serviced, with the 1st
month free

KIDDER.COM

This information supplied herein is from sources we deem reliable. It is provided without any representation, warranty, or guarantee, expressed or implied as to its accuracy. Prospective Buyer or Tenant should conduct an independent investigation and verification of all matters deemed to be material, including, but not limited to, statements of income and expenses. Consult your attorney, accountant, or other professional advisor.

km Kidder
Mathews

FOR SUBLEASE

180 Howard Street

SUITE 1220, SAN FRANCISCO, CA



IT SPECIFICATIONS

SONIC is current ISP

CAT 5E wiring throughout

PLUS wireless network

7 DATA PORTS currently installed

PAUL PICCIANI

415 229 8973

paul.picciani@kidder.com

LIC N° 01759888

KIDDER.COM

This information supplied herein is from sources we deem reliable. It is provided without any representation, warranty, or guarantee, expressed or implied as to its accuracy. Prospective Buyer or Tenant should conduct an independent investigation and verification of all matters deemed to be material, including, but not limited to, statements of income and expenses. Consult your attorney, accountant, or other professional advisor.

km Kidder Mathews

FOR SUBLEASE

180 Howard Street

SUITE 1220, SAN FRANCISCO, CA



KIDDER.COM

This information supplied herein is from sources we deem reliable. It is provided without any representation, warranty, or guarantee, expressed or implied as to its accuracy. Prospective Buyer or Tenant should conduct an independent investigation and verification of all matters deemed to be material, including, but not limited to, statements of income and expenses. Consult your attorney, accountant, or other professional advisor.

km Kidder Mathews