

# HALE PĀWAʻA

1401 South Beretania – Honolulu, HI 96814

FOR LEASE

STATE OF THE ART MEDICAL OFFICE SPACES














## CONVENIENT LOCATION

Hale Pāwāʻa is conveniently located at the intersection of Keʻeaumoku and Beretania Streets, within a mile of Kapiolani Medical Center for Women & Children, Kaiser Permanente, Straub Clinic & Hospital, and the Queen's Medical Center.

## HIGHLIGHTS

-  › Exclusively for medical professionals
-  › Ready to occupy space
-  › Extended building hours daily
-  › On-site and patrolling security services
-  › Free conference room facility for tenants
-  › Visitor loading/unloading at front of building
-  › Easy access parking garage from Beretania or Young Streets
-  › Gourmet café providing food and drinks in lobby
-  › Free visitor parking for first hour

## HOURS OF OPERATION


Monday – Friday 6:00 am – 8:30 pm

Saturday 6:00 am – 5:00 pm

Sunday 7:00 am – 5:00 pm



## BUILDING DESCRIPTION

-  › Completed in 2010
-  › Building Size  
Approx. 125,000 SF; Nine stories
-  › State of the art air conditioning and efficient energy management systems
-  › Dual pane glass windows for quiet and cooling
-  › Four high-speed elevators; includes one service elevator with gurney-sized interior

# LEASABLE AREA & FLOOR PLANS

Base Rent: Negotiable | Op. Exp: \$2.04/RSF/Month (2024)

Tenant Parking: Allocated one stall per 500 RSF leased; \$115.18/mo. Includes GET (subject to change)

## SUITE 250

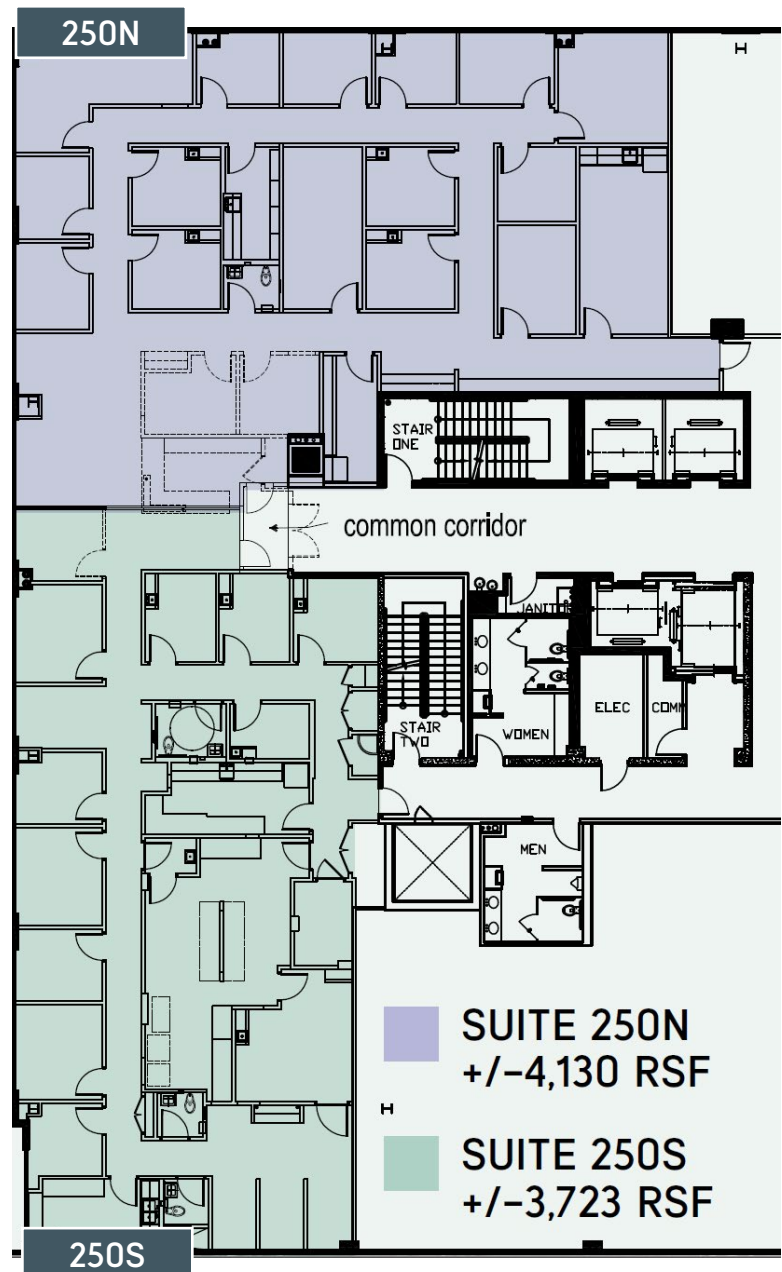
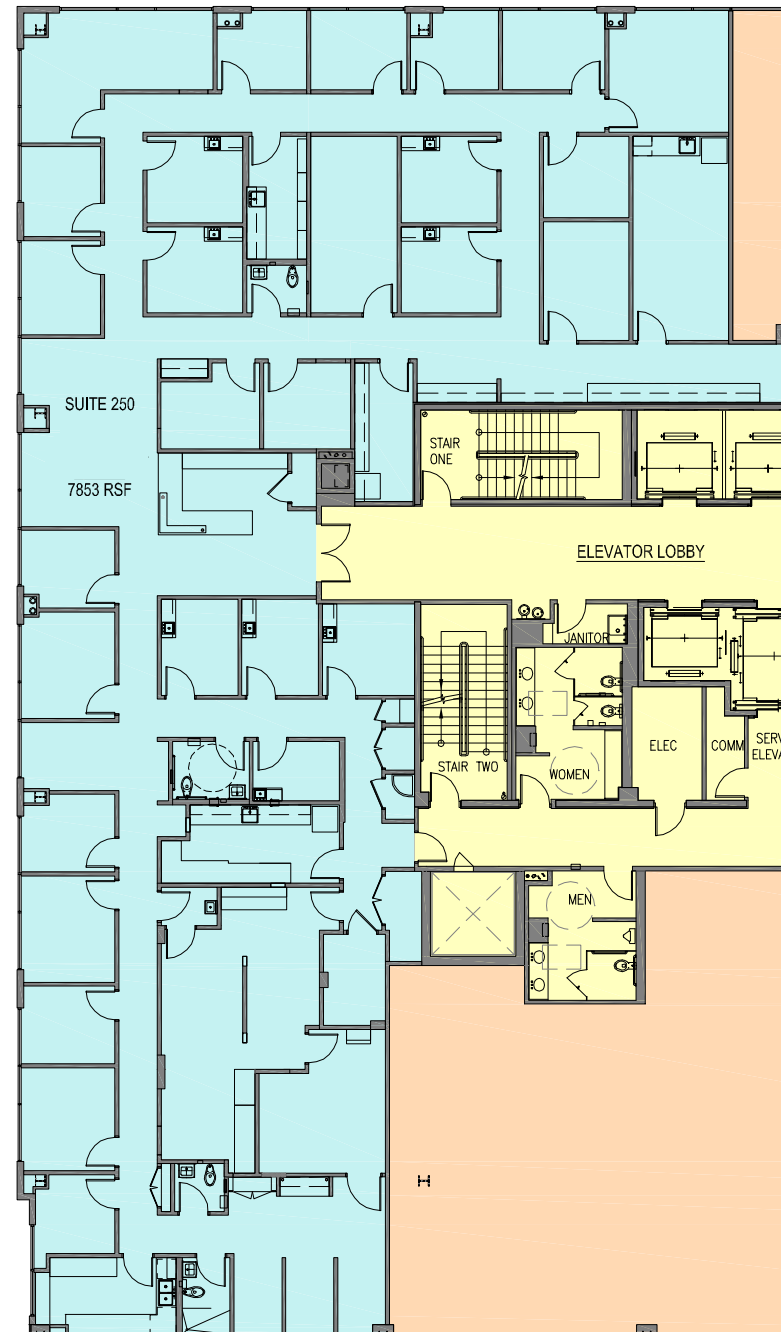
7,853 RSF

AVAILABLE FOR LEASE 9/1/2024

Currently occupied by a fertility clinic.

[FOR 3D VIRTUAL WALKTHROUGH CLICK HERE](#)

## SUITE 250 DEMISING PLAN OPTION





## For More Information Please Contact:

**Shawlea K. Aona (S)**

Vice President

+1 808 541 5142

[shawlea.aona@cbre.com](mailto:shawlea.aona@cbre.com)

Lic: RS-73197

**Serena C. Longo (S)**

First Vice President

+1 808 541 5181

[serena.longo@cbre.com](mailto:serena.longo@cbre.com)

Lic: RS-74888

**CBRE** CBRE, Inc. Broker Lic. #RB-20142

© 2023 CBRE, Inc. All rights reserved. This information has been obtained from sources believed reliable, but has not been verified for accuracy or completeness. Any projections, opinions, or estimates are subject to uncertainty. The information may not represent the current or future performance of the property. You and your advisors should conduct a careful, independent investigation of the property and verify all information. Any reliance on this information is solely at your own risk. CBRE and the CBRE logo are service marks of CBRE, Inc. and/or its affiliated or related companies in the United States and other countries. All other marks displayed on this document are the property of their respective owners.

Photos herein are the property of their respective owners and use of these images without the express written consent of the owner is prohibited.