

FOR LEASE

5011

MEADOWOOD MALL CIRCLE
RENO, NV 89502



LOGIC



EUGENE BURGER
MANAGEMENT
CORPORATION



CASEY PROSTINAK

Vice President
775.813.2866
cprostinak@logicCRE.com
S.177148.LLC

LANDON GONZALEZ

Vice President
775.741.6397
lgonzalez@logicCRE.com
S.179599.LLC

KELLY A. SIEFERT-MCKENZIE

Sr. Real Estate Manager/Commercial Division Manager
775.560.4169
S.50045
PM: 01.50045

Click to View

VIRTUAL TOUR 360°



5011 Meadowood Mall Cir.
Reno, NV 89502



Property Highlights

- Functional layout with many private offices
- Excellent location and visibility with tenant signage potential
- Ample parking
- Close proximity to retail and restaurants

Listing Snapshot



\$1.80 PSF FS

Lease Rate



+/- 5,000 SF

Available Square Footage



+/- 1.61 AC

Total Acreage

Population	1-mile	3-mile	5-mile
2023 Population	10,229	75,612	182,557
Income	1-mile	3-mile	5-mile
2023 Average Household Income	\$80,846	\$95,511	\$102,894
Households	1-mile	3-mile	5-mile
2023 Total Households	4,376	32,563	79,956

LOGIC in

The information herein was obtained from sources deemed reliable; however LOGIC Commercial Real Estate makes no guarantees, warranties or representation as to the completeness or accuracy thereof.

Aerial

■ Airport ■ Hotel/Casinos ■ Retail ■ Golf Course



LOGIC in

The information herein was obtained from sources deemed reliable; however LOGIC Commercial Real Estate makes no guarantees, warranties or representation as to the completeness or accuracy thereof.

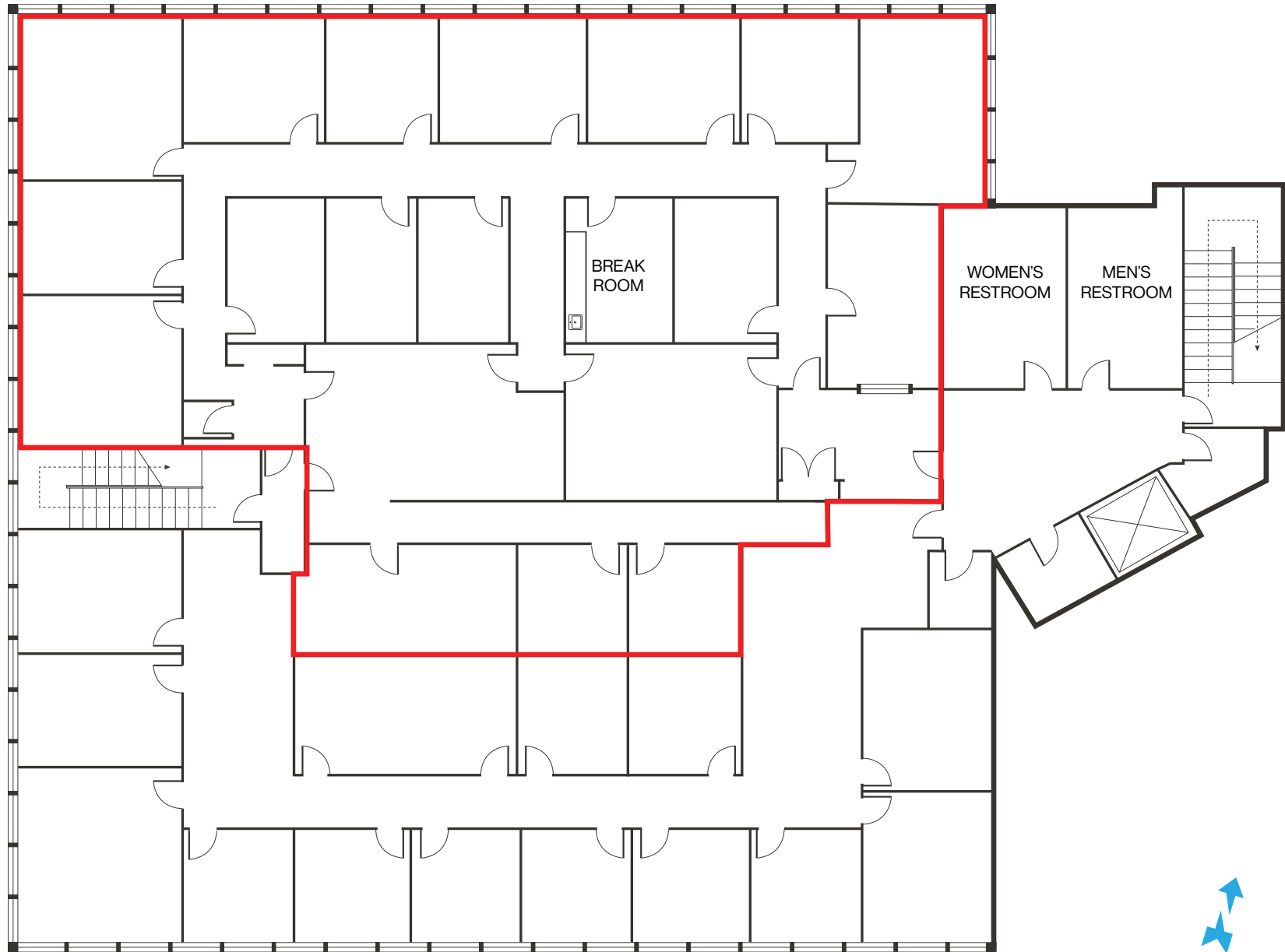


Site Plan



Floor Plan | Third Floor | Suite 300

 Available



LOGIC in

The information herein was obtained from sources deemed reliable; however LOGIC Commercial Real Estate makes no guarantees, warranties or representation as to the completeness or accuracy thereof.