

2842 N. Ontario St

BURBANK, CA

FOR SUBLEASE
14,861 SF

Well-Situated Near
Hollywood Burbank Airport



Building Highlights

Located in the business-friendly City of Burbank, 2842 N. Ontario Street is a very hard to find light industrial unit with both high ceilings and dock high loading. Totalling 14,861 SF, the property is situated adjacent to Interstate 5 Freeway and less than two miles from the Hollywood Burbank Airport.



Building SF

±14,861 SF



Rate

\$1.80/SF/Month Gross
(No Additional NNNs or CAM)



Clear Height

26' Min Clear



Power

±200 Amps of
277/480 V Power*



Internet

Spectrum



Restroom

One (1)



Ground Level Loading

1 Door (12' x 14')



Dock High Loading

1 Door (10' x 12')



Parking

34 Spaces



Unfinished Mezzanine

2,500 SF



Lease Exp

5/31/2026



Zoning

BUM2



Notes

Direct Deal Available



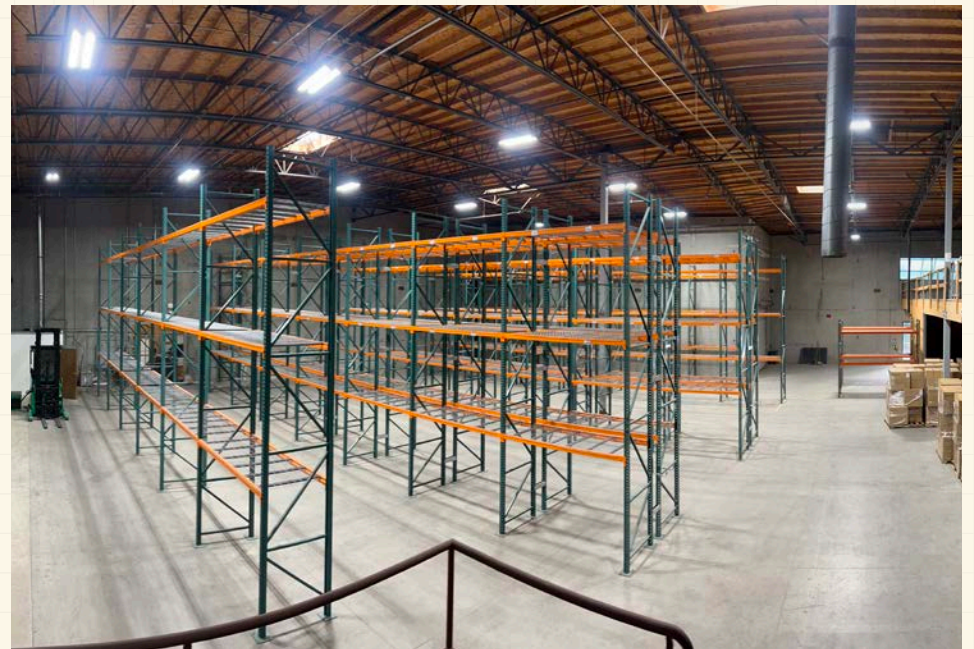
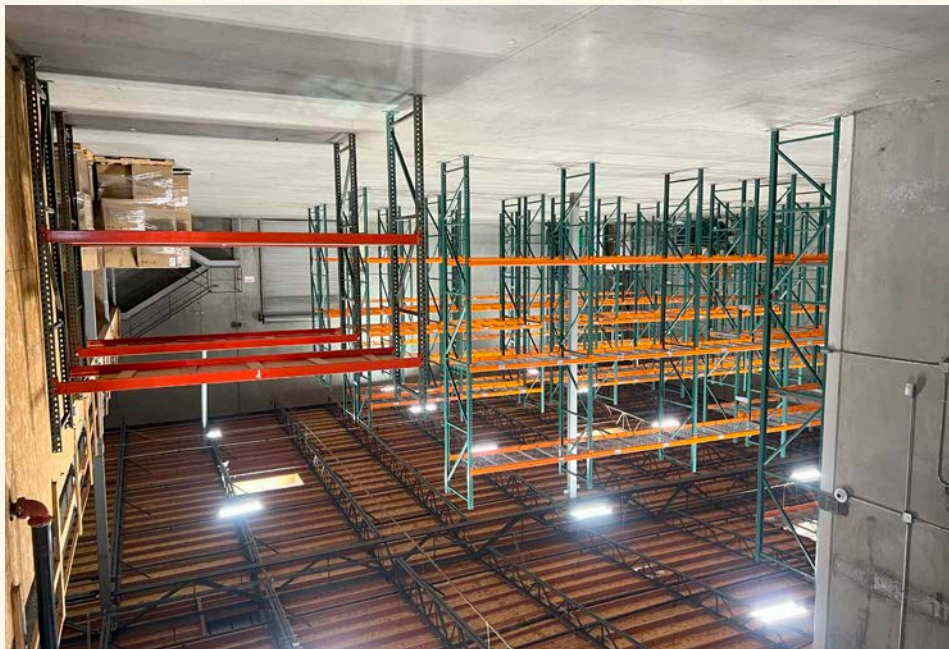
Construction Type

Concrete Tilt Up

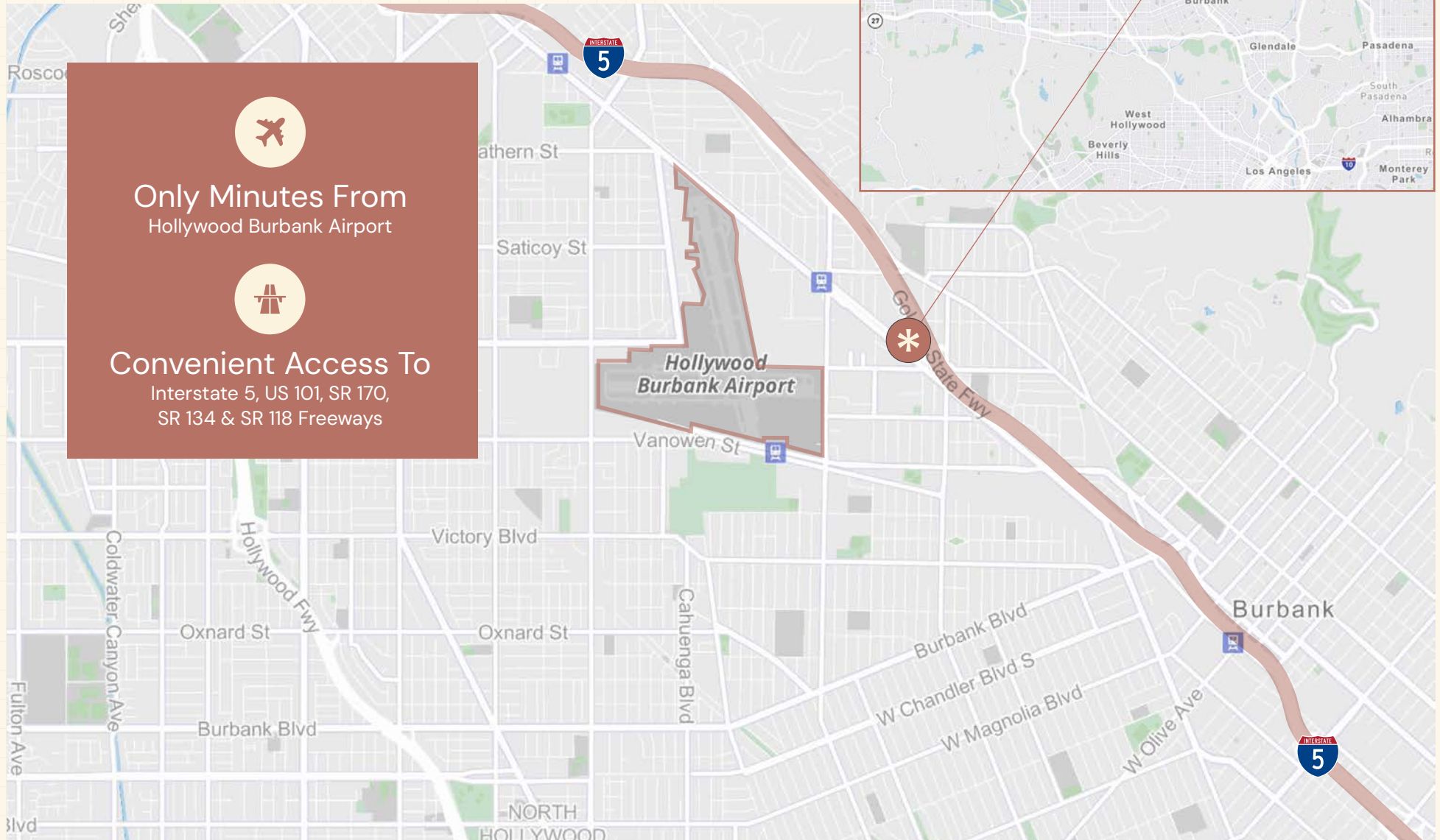
*Sublessee to Verify



Interior Photos



Location Map & Points of Interest



2842 N. Ontario St

FOR SUBLEASE
14,861 SF

For more information please contact:

Sam Glendon, SIOR

Senior Vice President

Lic. 01826689

+1 818 502 6745

sam.glendon@cbre.com

Mike Zugsmith

Associate

Lic. 02056362

+1 818 907 4683

mike.zugsmith@cbre.com

CBRE

© 2025 CBRE, Inc. All rights reserved. This information has been obtained from sources believed reliable but has not been verified for accuracy or completeness. CBRE, Inc. makes no guarantee, representation or warranty and accepts no responsibility or liability as to the accuracy, completeness, or reliability of the information contained herein. You should conduct a careful, independent investigation of the property and verify all information. Any reliance on this information is solely at your own risk. CBRE and the CBRE logo are service marks of CBRE, Inc. All other marks displayed on this document are the property of their respective owners, and the use of such marks does not imply any affiliation with or endorsement of CBRE. Photos herein are the property of their respective owners. Use of these images without the express written consent of the owner is prohibited.

