

FOR LEASE

NAI Commercial

WINTERBURN INDUSTRIAL LAND



20710 - 111 AVENUE | EDMONTON, AB | UP TO 4.5 ACRES

PROPERTY HIGHLIGHTS

- Improved 1.5 acre industrial lots available
- Compacted gravel/concrete (300mm/63mm concrete crush base; 75mm/20mm crush gravel topping) and 6 ft chain-link fence
- Best access to property via north east corner of 109 Avenue & 209 Street (northside)

CONOR CLARKE

Senior Associate
587 635 2480
cclarke@naiedmonton.com



NAI COMMERCIAL REAL ESTATE INC.
4601 99 STREET NW, EDMONTON AB, T6E 4Y1



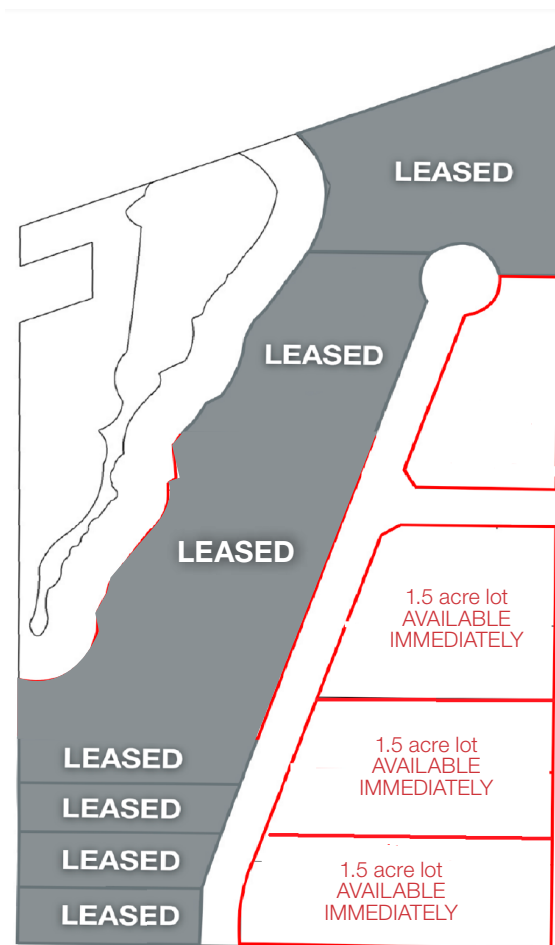
780 436 7410



NAIEDMONTON.COM

ADDITIONAL INFORMATION

SIZES AVAILABLE	(3) 1.5 acre lots
LEGAL DESCRIPTION	Lot E, Plan 1097RS
ZONING	FD - Future Urban Development Zone IM - Medium Industrial (rezoning in progress)
DISCRETIONARY USES	<p><u>Minor Industrial</u> Minor Industrial means a development used primarily for 1 or more of the following activities:</p> <ul style="list-style-type: none"> processing raw materials; manufacturing, cleaning, servicing, repairing or testing materials, goods and equipment; handling, storing, or shipping equipment, goods, and materials; training, research and development laboratories; or distributing and selling materials, goods and equipment to institutions and industrial and commercial businesses. <p>Any resulting <u>Nuisance</u> is less impactful than those permitted under the <u>Major Industrial Use</u>.</p> <p>Typical examples include: auto body repair and paint shops, <u>Cannabis Production and Distribution</u>, commercial recycling depots, contractor and construction services, equipment or vehicle repair and storage facilities, laboratories, landscaping centres, limo service, materials storage, research facilities, taxi service, truck yard, vehicle (truck, aircraft, mobile homes, etc.) and equipment sales and rentals, and warehouses.</p>
AVAILABLE	Immediately
LEASE TERM	1-5 years
BASE RENT	\$0.83/sq.ft. (\$3,000/month/acre)
OPERATING COSTS	\$0.10/sq.ft./annum



*FOR ILLUSTRATIVE PURPOSES - NOT EXACT - NOT TO SCALE



NAI COMMERCIAL REAL ESTATE INC.
4601 99 STREET NW, EDMONTON AB, T6E 4Y1



780 436 7410



NAI EDMONTON.COM

7526-A CC24