

RETAIL FOR LEASE

PRIME NEIGHBORHOOD SHOPPING CENTER SPACE IN NORTH EDWARDS, CA



13015 Claymine Rd, North Edwards, CA 93523



Lease Rate

**\$0.75
SF/MONTH
(MG)**

OFFERING SUMMARY

Building Size:	14,500 SF
Available SF:	540 - 2,000 SF
Lot Size:	3.9 Acres
Year Built:	1959
Zoning:	C2 - General Commercial
Market:	Bakersfield
Submarket:	NE Outlying Kern County
Cross Streets:	Claymine Rd & Lorraine Ave
APN's:	230-190-01, -02, -07, -08, -10, & -11

PROPERTY HIGHLIGHTS

- ±540 - 2,000 SF of Retail Shopping Center Space off CA-58
- Various Sized Retail Configurations w/ New Paint & Flooring
- Well-Known Freestanding Building + Parking & Signage
- Parking On All Sides Of Building on ±3.9 Acres
- Excellent Location, Great Tenant Mix, High Traffic Flows
- Energy Efficient Improvements - Low Cost Bulk Rate Utilities
- Convenient Location w/ Quick Access to Cal City & Mojave
- Prime Corner Identity | Large Pylon Signage | Abundant Parking
- Direct Claymine Rd Visibility | Surrounded w/ Quality Tenants
- Best Pylon Sign On #1 Retail Corridor: Claymine Rd
- Busiest Retail Growth Corridor w/ ±72,630 Cars Per Day
- Close Proximity to Major Traffic Generators & Fwy 58 Ramps
- Great Access & Visibility w/ Unmatched Level of Consumer Traffic
- ±14K SF Recently Renovated Center - Ample Convenient Parking
- Highly Visible Intersection w/ Ample Parking & Easy Access

We obtained the information above from sources we believe to be reliable. However, we have not verified its accuracy and make no guarantee, warranty or representation about it. It is submitted subject to the possibility of errors, omissions, change of price, rental or other conditions, prior sale, lease or financing, or withdrawal without notice. We include projections, opinions, assumptions or estimates for example only, and they may not represent current or future performance of the property. You and your tax and legal advisors should conduct your own investigation of the property and transaction.

JARED ENNIS

Executive Vice President
O: 559.705.1000
C: 559.705.1000
jared@centralcacommercial.com
CA #01945284

KEVIN LAND

Executive Managing Director
O: 559.705.1000
kevin@centralcacommercial.com
CA #01516541

KW COMMERCIAL
7520 N. Palm Ave #102
Fresno, CA 93711

RETAIL FOR LEASE

PRIME NEIGHBORHOOD SHOPPING CENTER SPACE IN NORTH EDWARDS, CA



13015 Claymine Rd, North Edwards, CA 93523

PROPERTY DESCRIPTION

Prime Shopping Center Space is well-located directly off CA-58 in North Edwards, CA serving the vast majority of Mojave and California City residents. There are currently (5) availabilities ranging from ±540 - 2,000 SF consisting of open retail & restaurant space. #13005 & 13007 of 2,000 SF have existing restaurant improvements and the contiguous spaces are currently wide open retail units. Each space offers a wide open floor plan, hard-surface flooring throughout, bright lighting, updated energy efficient features, private restrooms, outdoor lights during the night hours, lush landscaping, & all units have separate gas & power meters. The center is located approximately 5 miles from Edwards AF Aux North Base which is home to nearly 6,000 on-base residents. Over ±72,630 cars per day when combining both directions of Claymine & Lorraine as well as Highway 58 in both directions.

LOCATION DESCRIPTION

This property is well located off of the northwest corner of Claymine Rd & Lorraine Avenues just north of Freeway 58. The shopping center is surrounded by many national and regional retailers, and boast high traffic counts on Claymine Rd and great population density. North Edwards is a census-designated place (CDP) in Kern County, California. Situated in the Mojave Desert, North Edwards is located about 7.2 miles north-east of Edwards Air Force Base, at an elevation of 2,293 feet. As of the 2010 census it had a population of 1,058.



We obtained the information above from sources we believe to be reliable. However, we have not verified its accuracy and make no guarantee, warranty or representation about it. It is submitted subject to the possibility of errors, omissions, change of price, rental or other conditions, prior sale, lease or financing, or withdrawal without notice. We include projections, opinions, assumptions or estimates for example only, and they may not represent current or future performance of the property. You and your tax and legal advisors should conduct your own investigation of the property and transaction.

JARED ENNIS
Executive Vice President
O: 559.705.1000
C: 559.705.1000
jared@centralcacommercial.com
CA #01945284

KEVIN LAND
Executive Managing Director
O: 559.705.1000
kevin@centralcacommercial.com
CA #01516541

KW COMMERCIAL
7520 N. Palm Ave #102
Fresno, CA 93711

RETAIL FOR LEASE

PRIME NEIGHBORHOOD SHOPPING CENTER SPACE IN NORTH EDWARDS, CA



13015 Claymine Rd, North Edwards, CA 93523



LEASE INFORMATION

Lease Type: MG Lease Term: Negotiable
Total Space: 540 - 2,000 SF Lease Rate: \$0.75 SF/month

AVAILABLE SPACES

SUITE	TENANT	SIZE (SF)	LEASE TYPE	LEASE RATE
13001 Claymine Rd	Available	540 SF	Modified Gross	\$0.75 SF/month
13005-13007 Claymine Rd	Available	2,000 SF	Modified Gross	\$0.75 SF/month
13009 Claymine Rd	Available	960 SF	Modified Gross	\$0.75 SF/month
13011 Claymine Rd	Available	1,020 SF	Modified Gross	\$0.75 SF/month
13013 Claymine Rd	Available	1,200 SF	Modified Gross	\$0.75 SF/month

We obtained the information above from sources we believe to be reliable. However, we have not verified its accuracy and make no guarantee, warranty or representation about it. It is submitted subject to the possibility of errors, omissions, change of price, rental or other conditions, prior sale, lease or financing, or withdrawal without notice. We include projections, opinions, assumptions or estimates for example only, and they may not represent current or future performance of the property. You and your tax and legal advisors should conduct your own investigation of the property and transaction.

JARED ENNIS
Executive Vice President
O: 559.705.1000
C: 559.705.1000
jared@centralcacommercial.com
CA #01945284

KEVIN LAND
Executive Managing Director
O: 559.705.1000
kevin@centralcacommercial.com
CA #01516541

KW COMMERCIAL
7520 N. Palm Ave #102
Fresno, CA 93711

RETAIL FOR LEASE

PRIME NEIGHBORHOOD SHOPPING CENTER SPACE IN NORTH EDWARDS, CA



13015 Claymine Rd, North Edwards, CA 93523



#13015



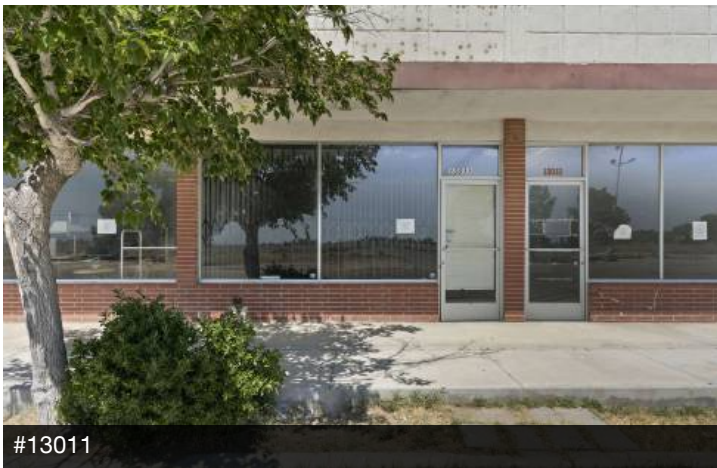
#13015



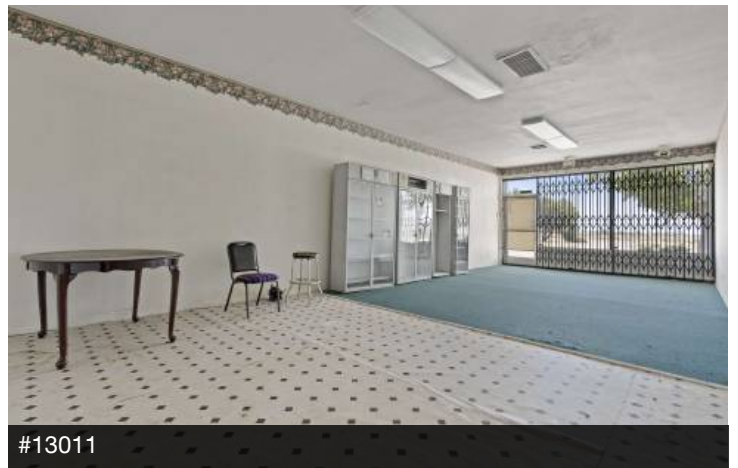
#13013



#13013



#13011



#13011

We obtained the information above from sources we believe to be reliable. However, we have not verified its accuracy and make no guarantee, warranty or representation about it. It is submitted subject to the possibility of errors, omissions, change of price, rental or other conditions, prior sale, lease or financing, or withdrawal without notice. We include projections, opinions, assumptions or estimates for example only, and they may not represent current or future performance of the property. You and your tax and legal advisors should conduct your own investigation of the property and transaction.

JARED ENNIS
Executive Vice President
O: 559.705.1000
C: 559.705.1000
jared@centralcacommercial.com
CA #01945284

KEVIN LAND
Executive Managing Director
O: 559.705.1000
kevin@centralcacommercial.com
CA #01516541

KW COMMERCIAL
7520 N. Palm Ave #102
Fresno, CA 93711

Each Office Independently Owned and Operated CentralCaCommercial.com

RETAIL FOR LEASE

PRIME NEIGHBORHOOD SHOPPING CENTER SPACE IN NORTH EDWARDS, CA



13015 Claymine Rd, North Edwards, CA 93523



#13009



#13009



#13005 - 13007



#13005 - 13007



#13005 - 13007



#13005 - 13007

We obtained the information above from sources we believe to be reliable. However, we have not verified its accuracy and make no guarantee, warranty or representation about it. It is submitted subject to the possibility of errors, omissions, change of price, rental or other conditions, prior sale, lease or financing, or withdrawal without notice. We include projections, opinions, assumptions or estimates for example only, and they may not represent current or future performance of the property. You and your tax and legal advisors should conduct your own investigation of the property and transaction.

JARED ENNIS
Executive Vice President
O: 559.705.1000
C: 559.705.1000
jared@centralcommercial.com
CA #01945284

KEVIN LAND
Executive Managing Director
O: 559.705.1000
kevin@centralcommercial.com
CA #01516541

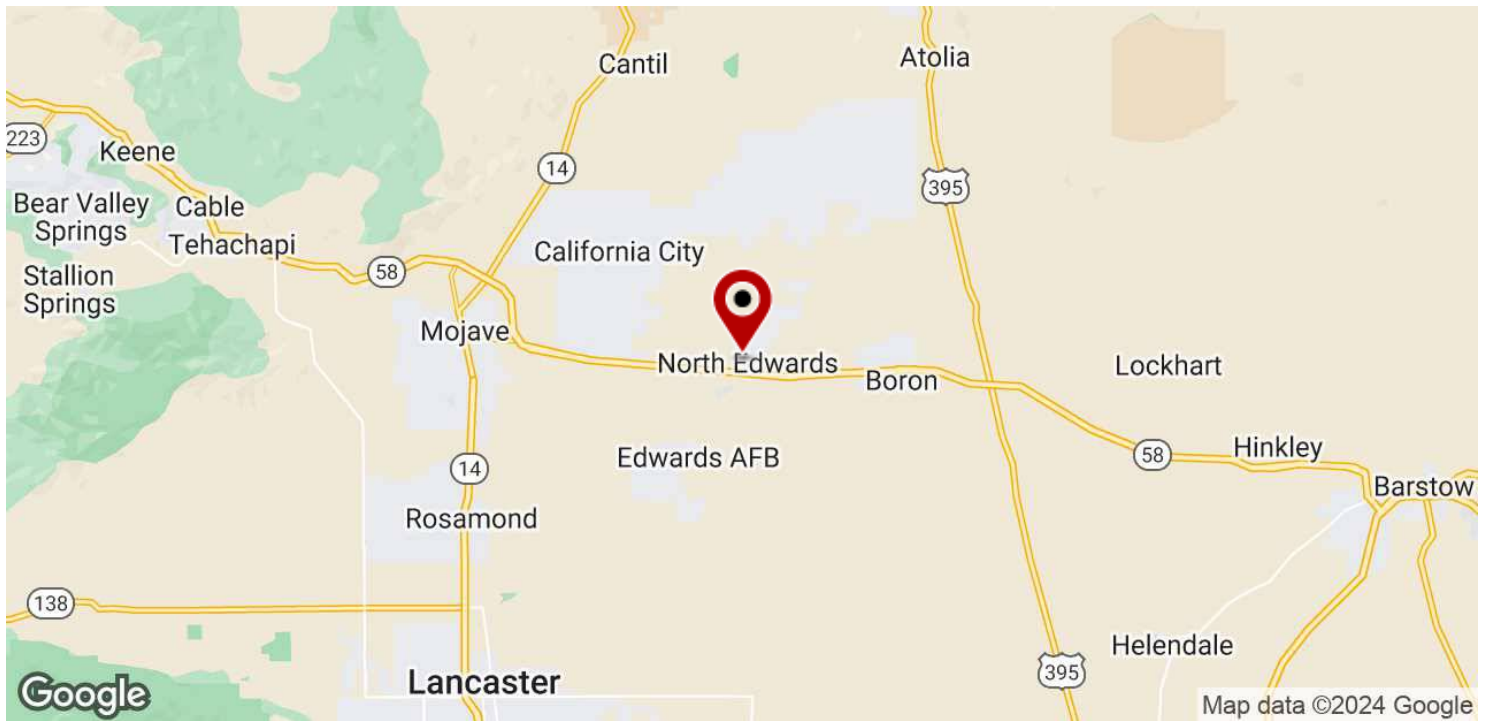
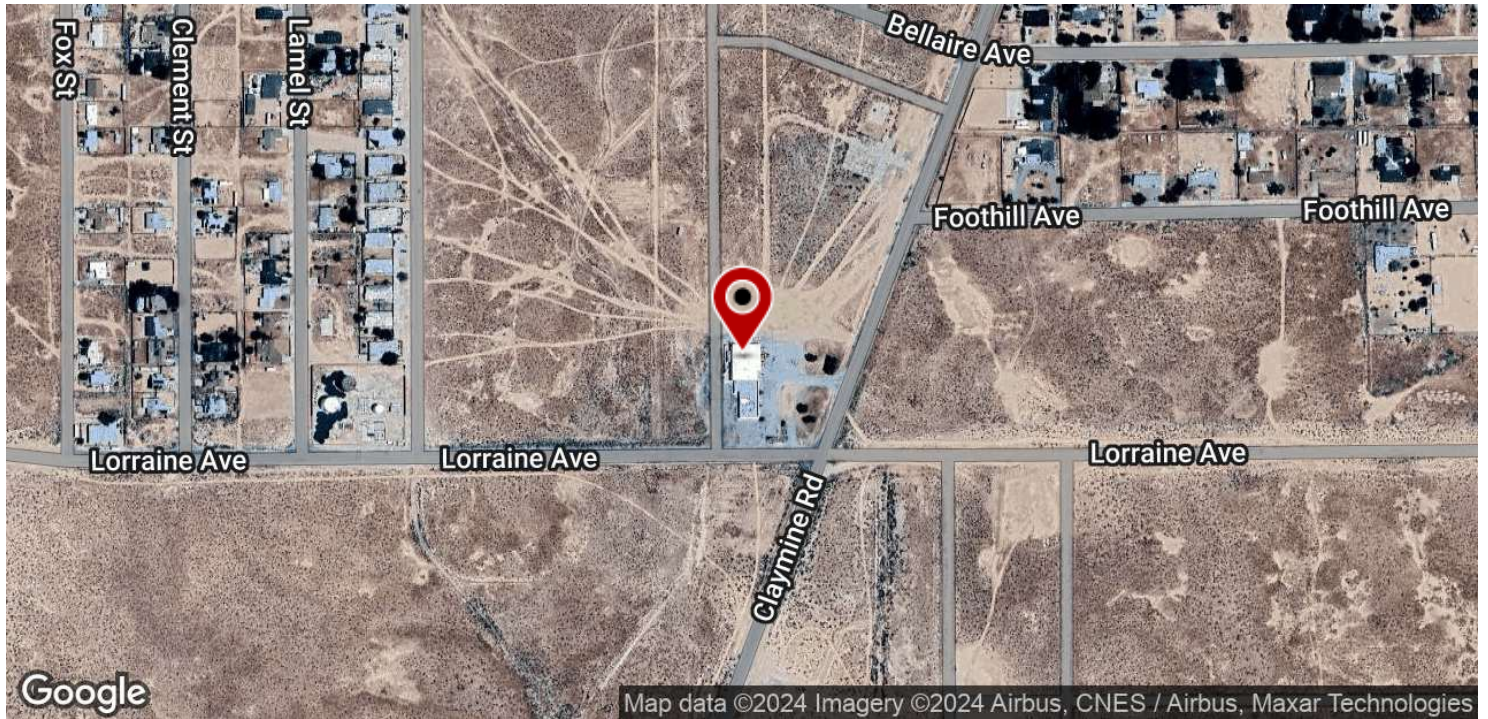
KW COMMERCIAL
7520 N. Palm Ave #102
Fresno, CA 93711

RETAIL FOR LEASE

PRIME NEIGHBORHOOD SHOPPING CENTER SPACE IN NORTH EDWARDS, CA



13015 Claymine Rd, North Edwards, CA 93523



We obtained the information above from sources we believe to be reliable. However, we have not verified its accuracy and make no guarantee, warranty or representation about it. It is submitted subject to the possibility of errors, omissions, change of price, rental or other conditions, prior sale, lease or financing, or withdrawal without notice. We include projections, opinions, assumptions or estimates for example only, and they may not represent current or future performance of the property. You and your tax and legal advisors should conduct your own investigation of the property and transaction.

JARED ENNIS
Executive Vice President
O: 559.705.1000
C: 559.705.1000
jared@centralcacommercial.com
CA #01945284

KEVIN LAND
Executive Managing Director
O: 559.705.1000
kevin@centralcacommercial.com
CA #01516541

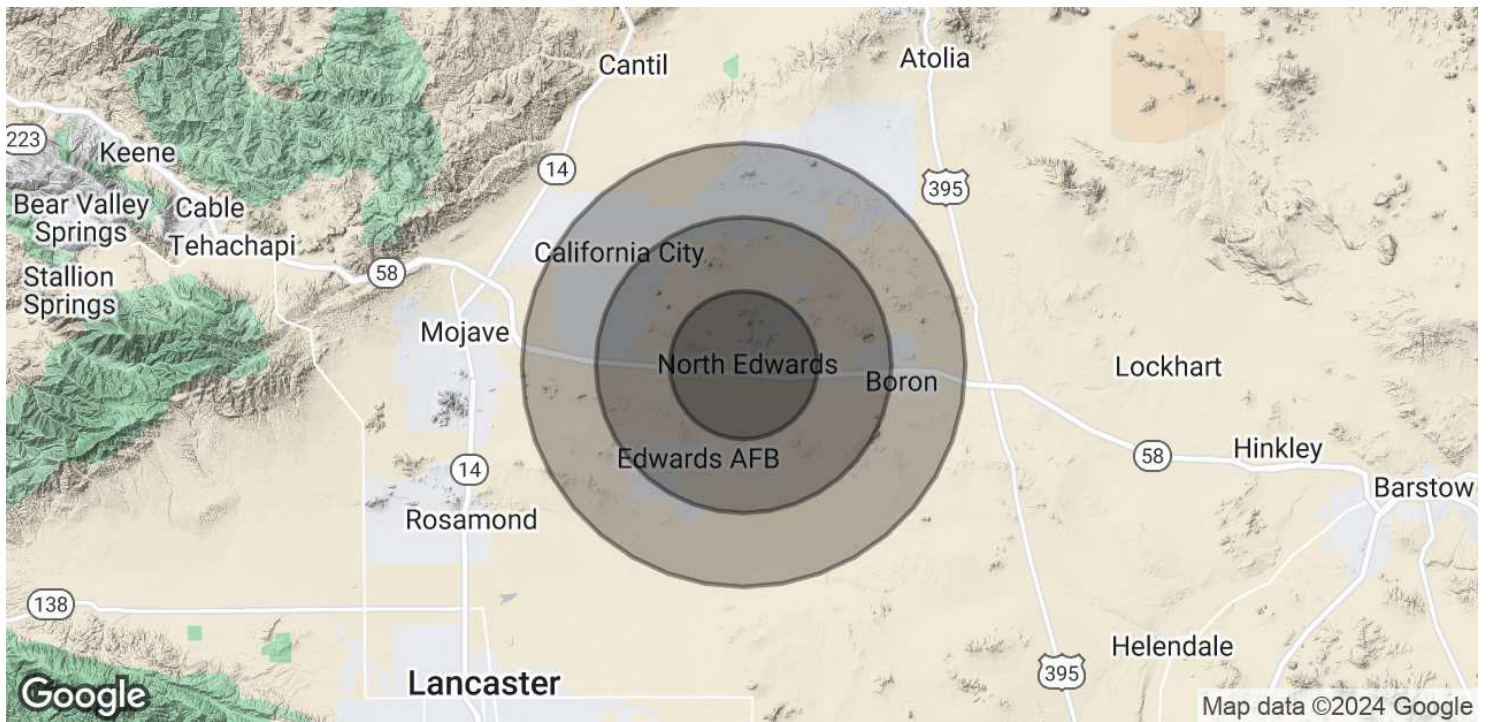
KW COMMERCIAL
7520 N. Palm Ave #102
Fresno, CA 93711

RETAIL FOR LEASE

PRIME NEIGHBORHOOD SHOPPING CENTER SPACE IN NORTH EDWARDS, CA



13015 Claymine Rd, North Edwards, CA 93523



POPULATION	5 MILES	10 MILES	15 MILES
Total Population	1,001	10,507	20,805
Average Age	43	35	36
Average Age (Male)	42	35	36
Average Age (Female)	44	39	38

HOUSEHOLDS & INCOME	5 MILES	10 MILES	15 MILES
Total Households	440	3,161	6,940
# of Persons per HH	2.3	3.3	3
Average HH Income	\$67,033	\$84,702	\$76,000
Average House Value	\$137,245	\$237,221	\$235,606

ETHNICITY (%)	5 MILES	10 MILES	15 MILES
Hispanic	25.5%	34.0%	35.3%

Demographics data derived from AlphaMap

We obtained the information above from sources we believe to be reliable. However, we have not verified its accuracy and make no guarantee, warranty or representation about it. It is submitted subject to the possibility of errors, omissions, change of price, rental or other conditions, prior sale, lease or financing, or withdrawal without notice. We include projections, opinions, assumptions or estimates for example only, and they may not represent current or future performance of the property. You and your tax and legal advisors should conduct your own investigation of the property and transaction.

JARED ENNIS
 Executive Vice President
 O: 559.705.1000
 C: 559.705.1000
 jared@centralcacommercial.com
 CA #01945284

KEVIN LAND
 Executive Managing Director
 O: 559.705.1000
 kevin@centralcacommercial.com
 CA #01516541

KW COMMERCIAL
 7520 N. Palm Ave #102
 Fresno, CA 93711