

FOR SALE

Baldwin Hills

BALDWIN ROAD, GRAND BLANC TOWNSHIP



JERRY MANSOUR JR

Mansour Realty, Inc.
www.mansourrealty.com
810-244-6000



**MANSOUR
REALTY &
ADVISORS**

SERVING MID-MICHIGAN SINCE

EXECUTIVE SUMMARY

BALDWIN RD
GRAND BLANC TOWNSHIP

37 ACRES OF PRIME DEVELOPMENT PROPERTY

37 Acres of beautiful rolling land available for immediate development. The property has been rezoned to Neighborhood Commercial allowing for:

- Office
- Retail
- Assisted Living
- Sr Housing

Located in North Oakland County, this prime site is near high end offices and hotels, Grand Blanc and Clarkston residential, the new Henry Ford Genesys Hospital and Grand Blanc's new Technology Village. All utilities are to the site. There are approximately 25 acres of usable land with stunning wetlands interweaved in the development. One of a kind opportunity.

JERRY MANSOUR JR

Mansour Realty, Inc.
www.mansourrealty.com
810-244-6000



AERIAL OVERVIEW



JERRY MANSOUR JR

Mansour Realty, Inc.
www.mansourrealty.com
810-244-6000

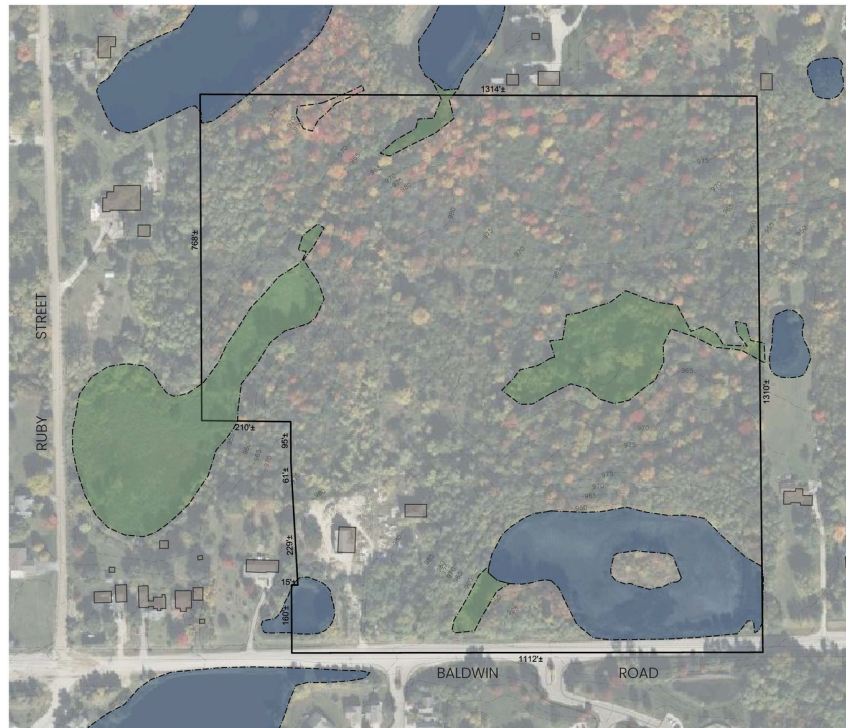


**MANSOUR
REALTY &
ADVISORS**

AERIAL OVERVIEW

Baldwin Hills

SECTION 26, GRAND BLANC TOWNSHIP, GENESEE COUNTY, MICHIGAN



Jerry Mansour Jr.
ph: 810.244.6000
email: jerrymansourjr@gmail.com



PROPERTY DATA

LOCATION:	GRAND BLANC TOWNSHIP
GROSS ACREAGE:	37 ACRES
ZONED:	NEIGHBORHOOD COMMERCIAL
PUBLIC WATER AVAILABLE:	✓
PUBLIC SANITARY AVAILABLE:	✓
PUBLIC ROAD ACCESS:	✓
OPEN WATER	
REGULATED WETLAND (SEE NOTE 2)	

NOTES

1. THE PROPERTY TOPOGRAPHIC AND ELEVATION INFORMATION SHOWN ON THIS CONCEPT PLAN WAS TAKEN FROM AVAILABLE RECORDS. PLANS AND UNDEVELOPED ARE NOT COMPLETED BY A SURVEYOR OR TOPOGRAPHIC SURVEY AT THIS TIME.
2. WITH AREAS OF OPEN WATER AND REGULATED WETLANDS, THE PROPERTY IS SUBJECT TO THE MICHIGAN DEPARTMENT OF NATURAL RESOURCES (MDNR) REGULATIONS. THE PROPERTY IS SUBJECT TO THE MICHIGAN DEPARTMENT OF NATURAL RESOURCES (MDNR) REGULATIONS. THE PROPERTY IS SUBJECT TO THE MICHIGAN DEPARTMENT OF NATURAL RESOURCES (MDNR) REGULATIONS.
3. ACCORDING TO THE GENESEE COUNTY GIS SYSTEM THERE IS NO FLOODPLAIN AREA ON THIS PROPERTY.
4. THIS EXISTING CONDITIONS MAP WAS CREATED FROM AVAILABLE RECORDS WITHOUT HAVING A TOPOGRAPHIC SURVEY. BOUNDARY SURVEY, PLANS, AND DEVELOPMENT, AND FROM THE RECORDS, INCLUDING RECORDS AND THE MICHIGAN DEPARTMENT OF NATURAL RESOURCES (MDNR) REGULATIONS. THE PROPERTY IS SUBJECT TO THE MICHIGAN DEPARTMENT OF NATURAL RESOURCES (MDNR) REGULATIONS.

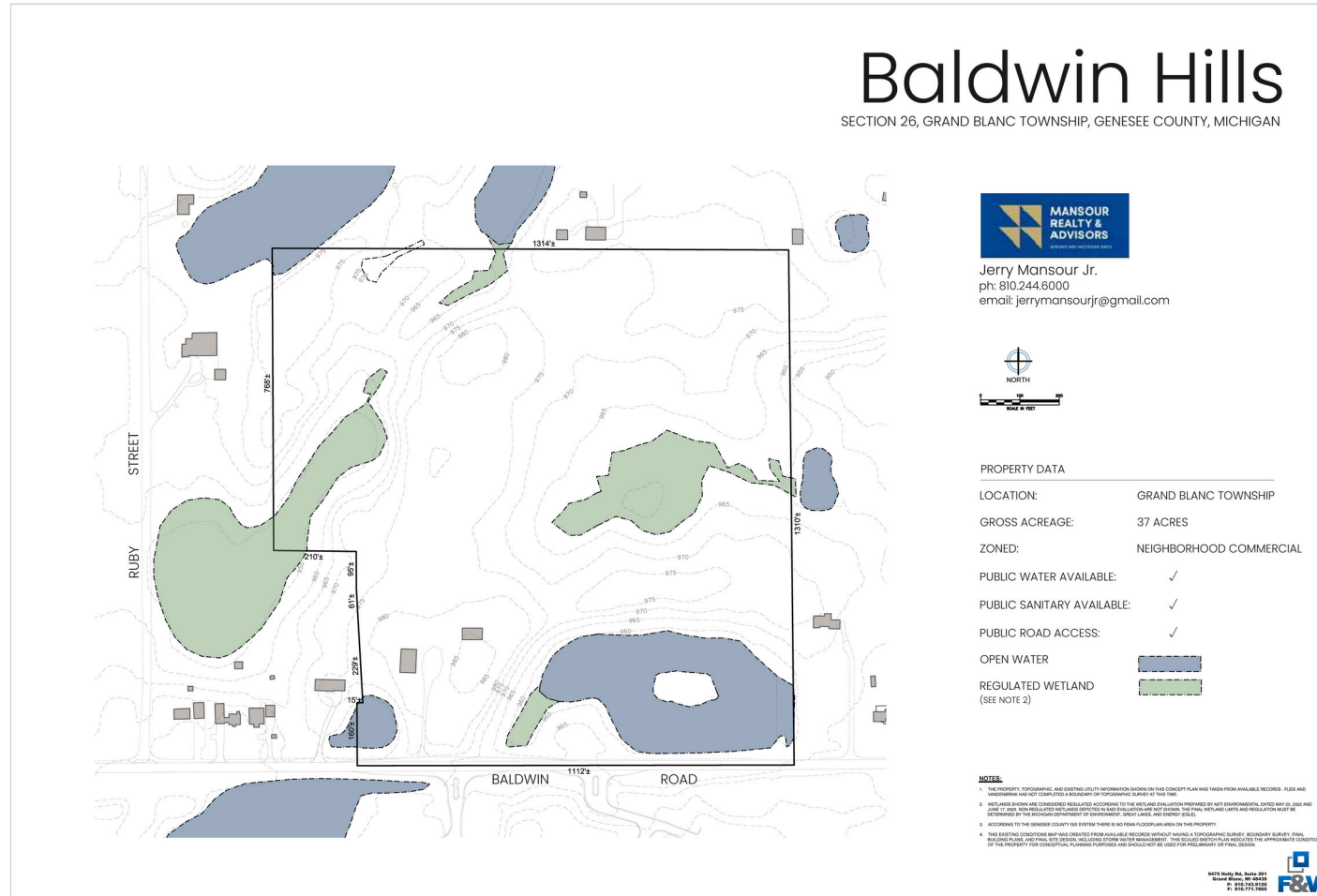
8475 Holly Rd., Suite 201
Grand Blanc, MI 48030
P: 810.244.6000
F&V

JERRY MANSOUR JR

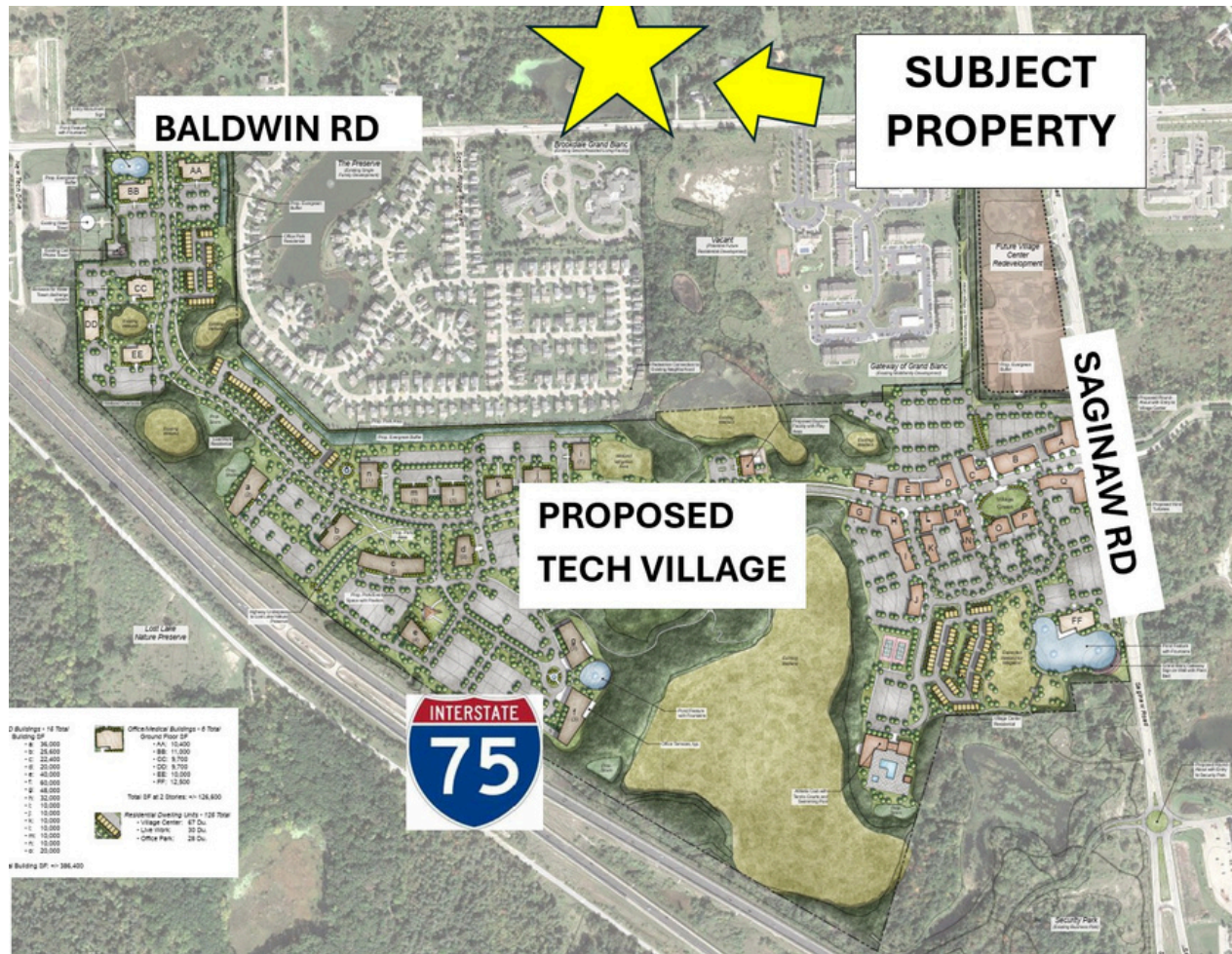
Mansour Realty, Inc.
www.mansourrealty.com
810-244-6000



AERIAL OVERVIEW



ACROSS FROM TECH VILLAGE



JERRY MANSOUR JR

Mansour Realty, Inc.
www.mansourrealty.com
810-244-6000



INVESTMENT OVERVIEW

Property:	Baldwin Rd in Grand Blanc Township Genesee County, Michigan
Seller:	Paragon Capital Investments, LLC
Size:	37 Acres
Purchase Price:	Negotiable
Terms:	Cash at Closing

Utilities:	All Utilities Available
Existing Use:	Vacant Land
Zoning:	Neighborhood Commercial

JERRY MANSOUR JR

Mansour Realty, Inc.
www.mansourrealty.com
810-244-6000



DEMOGRAPHICS

Population			
	2 miles	5 miles	10 miles
2020 Population	10,251	50,184	210,269
2024 Population	9,488	47,873	206,464
2029 Population Projection	9,289	47,263	205,568
Annual Growth 2020-2024	-1.9%	-1.2%	-0.5%
Annual Growth 2024-2029	-0.4%	-0.3%	-0.1%
Median Age	46.2	41.4	41.1
Bachelor's Degree or Higher	55%	41%	26%
U.S. Armed Forces	1	13	55

JERRY MANSOUR JR

Mansour Realty, Inc.
www.mansourrealty.com
810-244-6000



BENEFITS OF LOCATING IN GRAND BLANC TOWNSHIP

Grand Blanc Township, Michigan, offers a compelling mix of strategic infrastructure and aggressive economic support. Situated at the intersection of I-75 and US-23, the township provides logistical advantages with rapid access to the major industrial corridors of the Midwest and is just minutes from Bishop International Airport. This connectivity is backed by a forward-thinking administration that facilitates growth through the Downtown Development Authority (DDA) and initiatives like the Technology Village, which targets high-tech and knowledge-based enterprises. Businesses here benefit from expedited site plan reviews and have historically received performance-based grants, making it a financially attractive environment for industries ranging from advanced manufacturing (e.g., Magna, Mara Technologies) to healthcare (anchored by Henry Ford Hospital-Genesys).

Companies have access to a skilled talent pool drawn from nearby institutions like Kettering University and UM-Flint, supporting sectors from automotive to medical research. The community itself is characterized by top-rated schools, diverse housing options, and extensive recreational amenities, creating an environment where employees want to live long-term. This stability, combined with a safe community atmosphere and lower operating costs compared to major metro hubs, makes Grand Blanc Township a sustainable choice for businesses looking to balance operational efficiency with employee satisfaction.

JERRY MANSOUR JR

Mansour Realty, Inc.
www.mansourrealty.com
810-244-6000

