

SOUTH OGDEN FASHION POINTE

FOR LEASE



PROPERTY DETAILS

5926 & 5974 South Fashion Pointe Drive
South Ogden, Utah 84403

Lease Rates: Suite 220 - \$25.00/SF Full Service, Suite 240 - \$950/Month

- Suite 220: 1,942 SF | Available March 1, 2026
- Suite 240: 345 SF Available
- Recently upgraded lobbies, restrooms, lighting and common areas
- Recently resurfaced parking lot and upgraded monument signs completed
- New landscaping and main entry awnings underway
- Abundant surface parking
- Great visibility and easy access to Highway 89, I-84, Washington Boulevard, and Harrison Boulevard, nearby retail, banks and restaurants



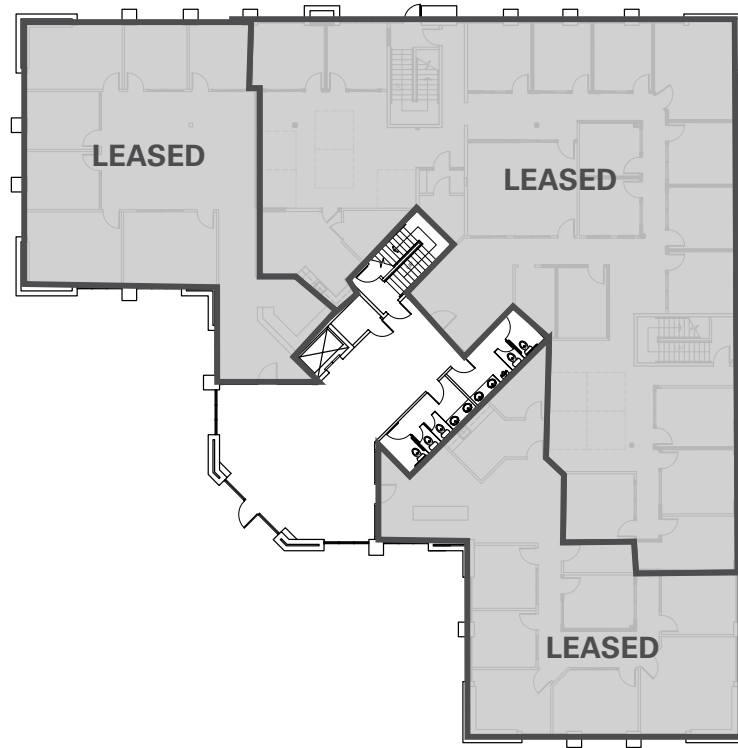
BRAXTON WILLIE, CCIM
bwillie@newmarkmw.com
direct 801.803.3334
[View Profile](#)

CHRIS FALK, CCIM, SIOR
cfalk@newmarkmw.com
direct 801.499.6514
[View Profile](#)

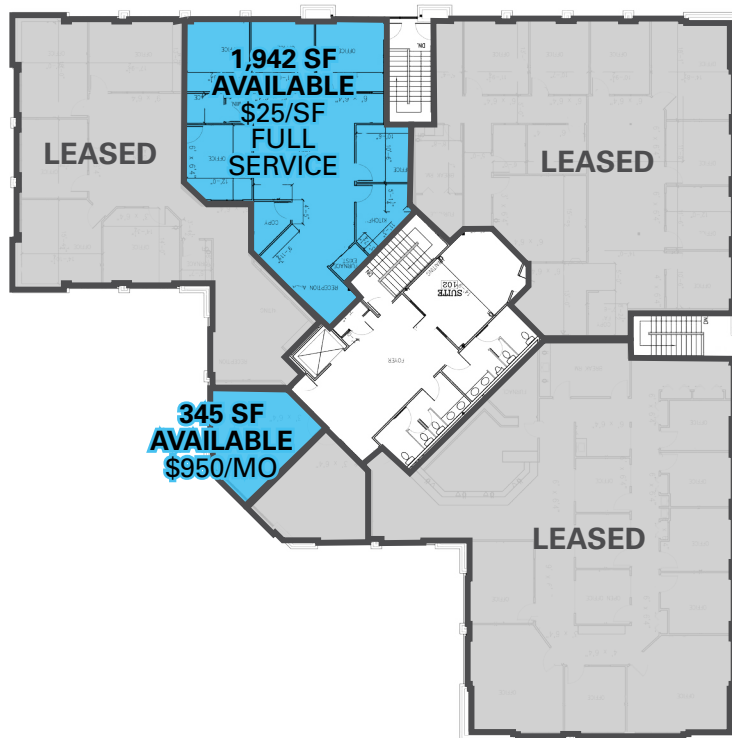
**FULL SERVICE
COMMERCIAL REAL ESTATE**
1410 S University Park Blvd, Ste 120
Clearfield, Utah 84015
Office 801.578.5580
www.newmarkmw.com

SOUTH OGDEN FASHION POINTE

FIRST FLOOR



SECOND FLOOR



FLOOR PLAN - NORTH BUILDING



BRAXTON WILLIE, CCIM
bwillie@newmarkmw.com
direct 801.803.3334
[View Profile](#)

CHRIS FALK, CCIM, SIOR
cfalk@newmarkmw.com
direct 801.499.6514
[View Profile](#)

**FULL SERVICE
COMMERCIAL REAL ESTATE**
1410 S University Park Blvd, Ste 120
Clearfield, Utah 84015
Office 801.578.5580
www.newmarkmw.com

NEWMARK



MOUNTAIN WEST

BRAXTON WILLIE, CCIM

bwillie@newmarkmw.com

direct 801.803.3334

[View Profile](#)

CHRIS FALK, CCIM, SIOR

cfalk@newmarkmw.com

direct 801.499.6514

[View Profile](#)

**NORTH BUILDING
5926 SOUTH**

SITE

FULL SERVICE

COMMERCIAL REAL ESTATE

1410 S University Park Blvd, Ste 120

Clearfield, Utah 84015

Office 801.578.5580

www.newmarkmw.com



BRAXTON WILLIE, CCIM
 bwillie@newmarkmw.com
 direct 801.803.3334
[View Profile](#)

CHRIS FALK, CCIM, SIOR
 cfalk@newmarkmw.com
 direct 801.499.6514
[View Profile](#)

**FULL SERVICE
 COMMERCIAL REAL ESTATE**
 1410 S University Park Blvd, Ste 120
 Clearfield, Utah 84015
 Office 801.578.5580
www.newmarkmw.com