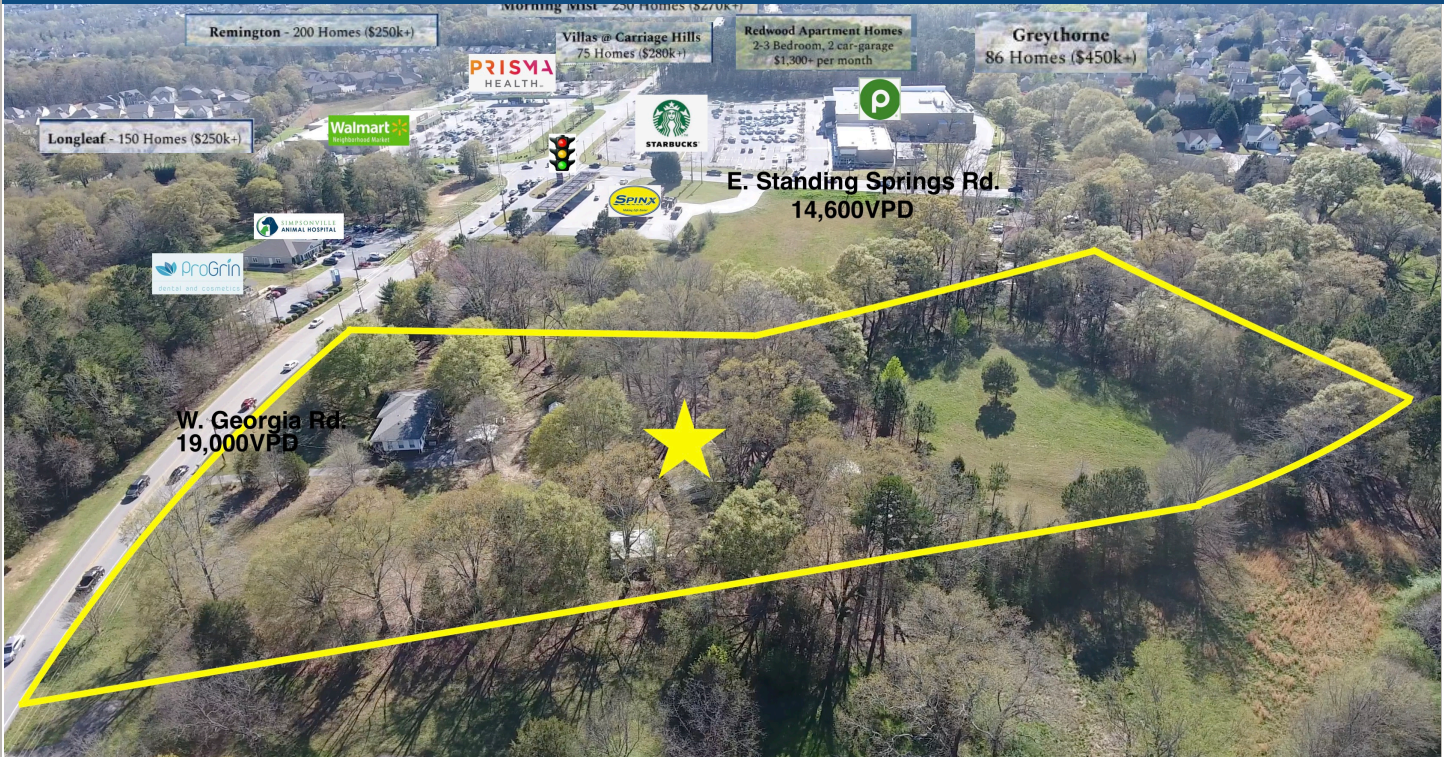




**THE
REALTY
SUITE**

**1212 & 27305
W. Georgia Rd.
Simpsonville, SC 29680**

Contact
Broker for
Pricing



Residential



Commercial



Investments

Ernest A. Crosby, BIC
Southeast Sales Director
 208 Dove Tree Rd
 Greenville, SC 29615
ecrosby@therealtysuite.com
 864-245-2293

- ~ 4.53 Acres/342 ft. frontage on W. Georgia Rd.
- ~ Tax-id 0574030100201 & 0574030100203
- ~ 20min to Downtown Greenville and Falls Park
- ~ I-385 1.5 miles to the east
- ~ SCDOT 19,000 VPD
- ~ Greenville Tech 1.5 miles to the west
- ~ CRS-29,682 Residences w/in 5 miles / 46.21% w BA/BS degree or higher
- ~ CRS Area Sales Trend Report - w/in 3 miles (\$81,531,391 in last 90-120 days) as of 4/10/2021

www.therealtysuite.com