



**580 WASHINGTON ST**  
**EASTON, MA 02375**

**2 COMMERCIAL SPACES FOR LEASE**



**1ST FLOOR**

**+/-4,640 SF**  
**OFFICE SPACE**  
**FOR LEASE**

**2ND FLOOR**

**+/-1,710 SF**  
**OFFICE SPACE**  
**FOR LEASE**

# FACILITY

## FEATURES

**Space Available**      1st floor +/- 4,640 sf  
2nd floor +/- 1,710 sf

**Space Use**            Office, Medical, or  
Professional services

**Lease Type**            Modified Gross

**Lease Rate**            Contact for Pricing

**Date Available**        Now

**580 Washington Street** is a highly visible commercial property in South Easton offering approximately 9,958 square feet of space on a 1.14-acre corner lot. Conveniently located near Routes 138, 123, and 24, the property combines existing income potential with flexibility for owner occupancy, expansion, or future redevelopment. Featuring ample parking, excellent accessibility, and strong roadway exposure, this versatile property is well suited for professional offices, medical use, nonprofit organizations, or investment purposes.



# FLOOR PLAN | 1ST FLOOR

+/-4,640 SF SPACE AVAILABLE

VIRTUAL WALKTHROUGH



[Click here](#) or scan the QR code to Explore a virtual walkthrough.



FLOOR 1

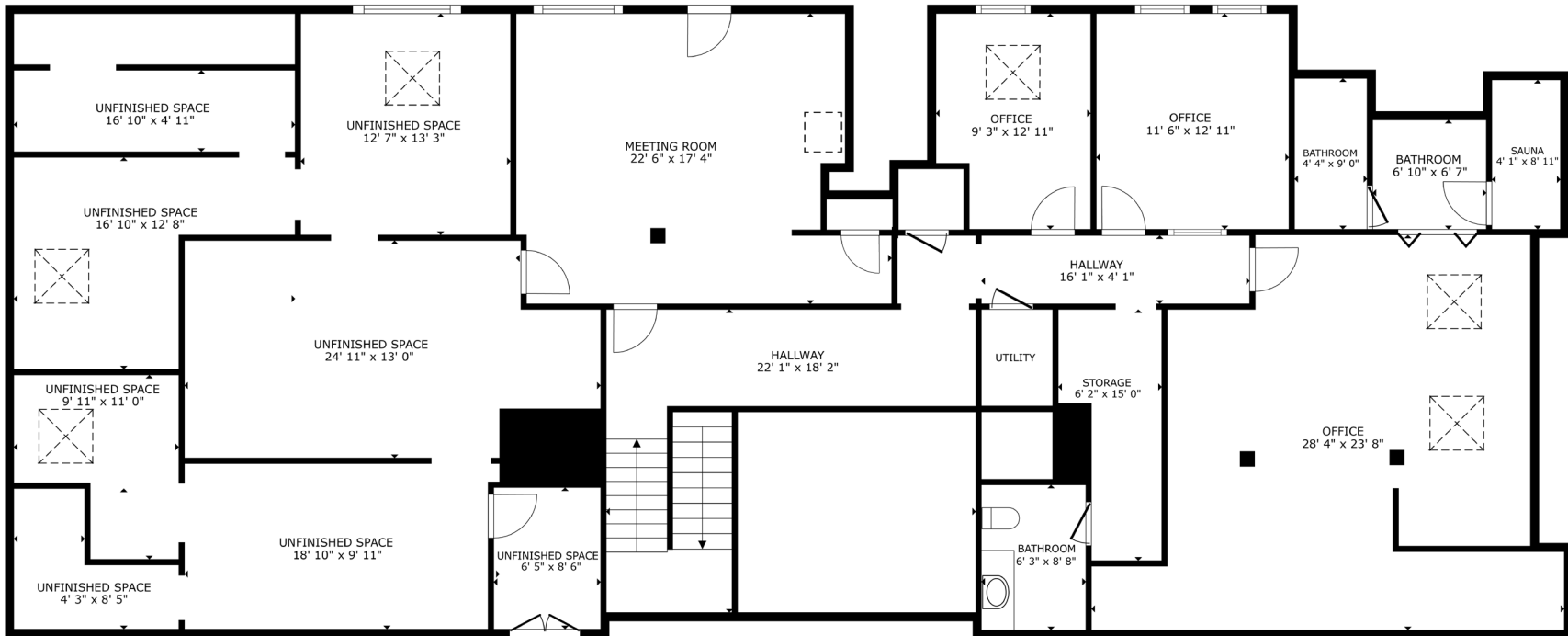
# FLOOR PLAN | 2ND FLOOR

+/-1,710 SF SPACE AVAILABLE

VIRTUAL WALKTHROUGH



[Click here](#) or scan the QR code to Explore a virtual walkthrough.



FLOOR 2

# EXISTING CONDITIONS

MORE PHOTOS



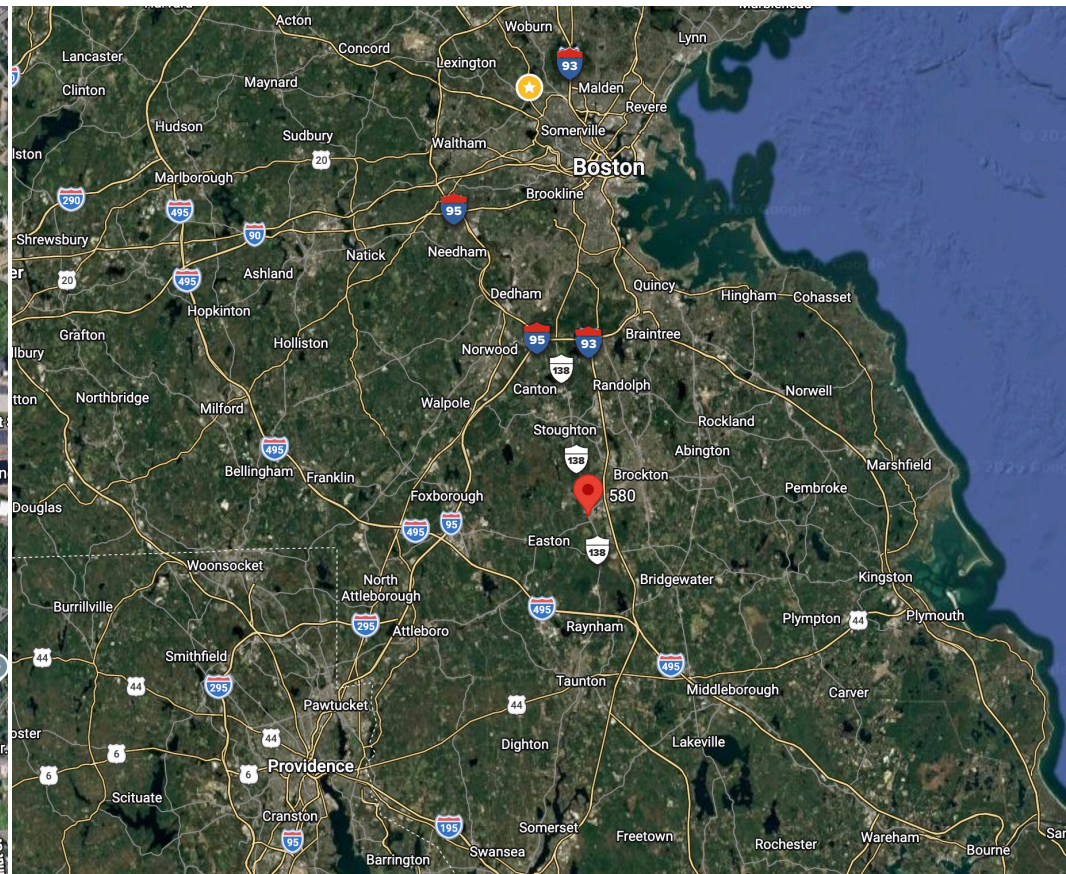
# EXISTING CONDITIONS

## MORE PHOTOS



# AERIAL MAP

## 580 WASHINGTON ST, EASTON, MA



**Prime Location:** Located on Washington Street (Route 138) in South Easton, 580 Washington Street offers strong visibility along a busy commercial corridor. The property sits near the intersection of Routes 138 and 123 with convenient access to Route 24, providing connectivity to Greater Boston, Providence, and surrounding communities. Nearby retail, dining, and service amenities enhance its appeal for businesses and visitors.

**Transit Accessibility:** 580 Washington Street offers convenient access for commuters and visitors. Located minutes from Route 24 and major local roadways, the property provides efficient travel throughout southeastern Massachusetts. While public transit options are limited, ample on-site parking and proximity to major transportation routes make the property easily accessible by car.

# GET IN TOUCH

**580 WASHINGTON  
EASTON, MA**

Don't miss out on this exceptional commercial opportunity. Contact Leroy today to schedule a viewing and explore this property.



**VIEW ONLINE**  
[Click here](#) or scan  
the QR code.



**LEROY WALLACE**

857-891-1611

Leroy@tucker-re.com

tucker-re.com

