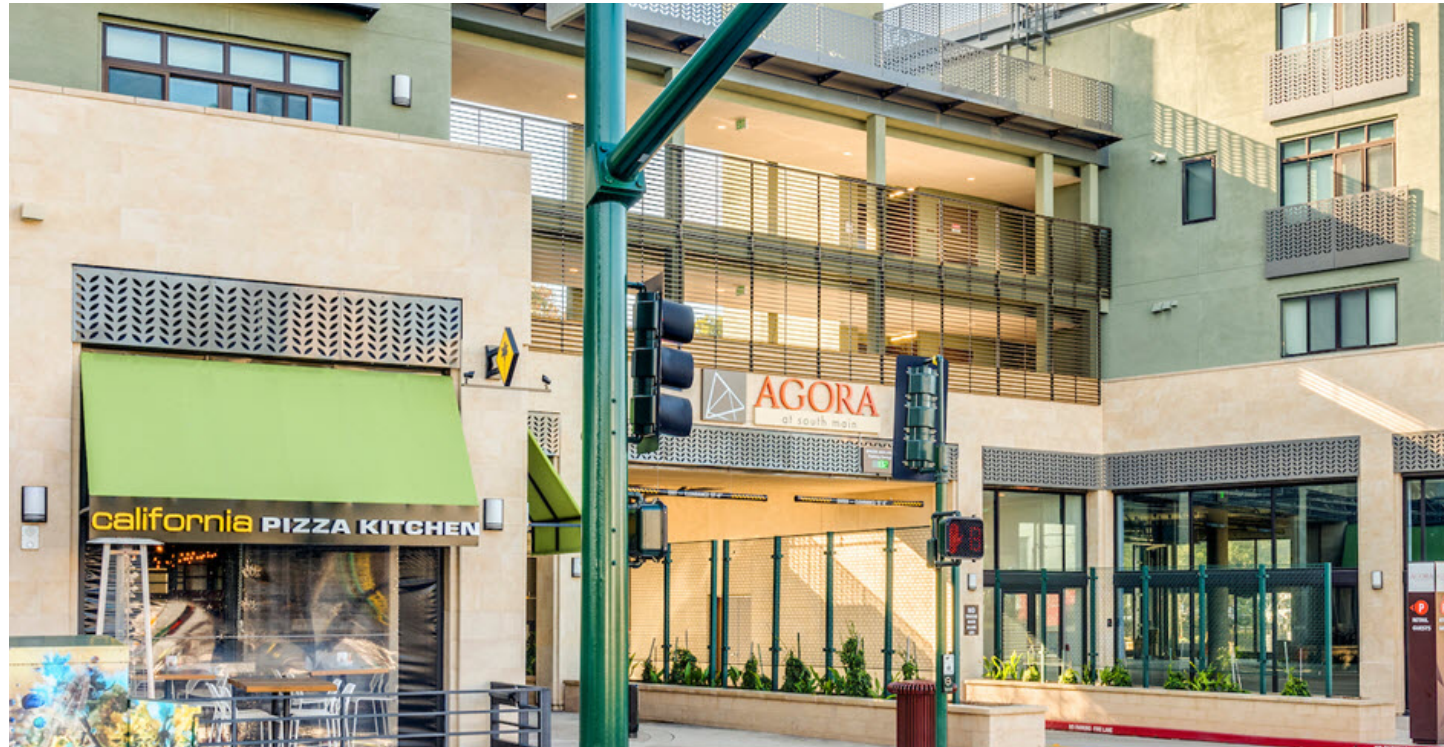


PRIME RETAIL FOR LEASE

# Main Street & Newell Avenue Walnut Creek, California

3240 - 5,900 SF Spaces Available





## 34,661 SF OF GROUND FLOOR RETAIL SPACE PLUS TWO LEVELS OF UNDERGROUND PARKING

Agora at South Main is a recently built development that provides the last infill opportunity for major retailers seeking a core Walnut Creek location. With over 34,000 SF of ground floor space, the project provides larger format retailers access to the historically impenetrable downtown Walnut Creek market.

Agora at South Main has direct linkage across Main Street to Broadway Plaza and captures the same upscale clientele which shops this premium retail mall. The same educated, affluent trade area that shops Coach, CPK, Apple, and Tiffany & Co. will be at your front door.

circa LIGHTING®

T-Mobile

Pacific Catch



## THE #1

SHOPPING & DINING DESTINATION IN THE EAST BAY

168,368

STRONG DAYTIME POPULATION CAPTURING AN AFFLUENT MARKET

2.4M+

SF OF RETAIL & DINING IN A UNIQUE INVITING STREETSCAPE



# PREMIUM DESIGN AND ARCHITECTURE



## *Proximate Retailers*

- ▶ Pottery Barn
- ▶ Neiman Marcus
- ▶ Nordstrom
- ▶ Tiffany & Co.
- ▶ Anthropologie

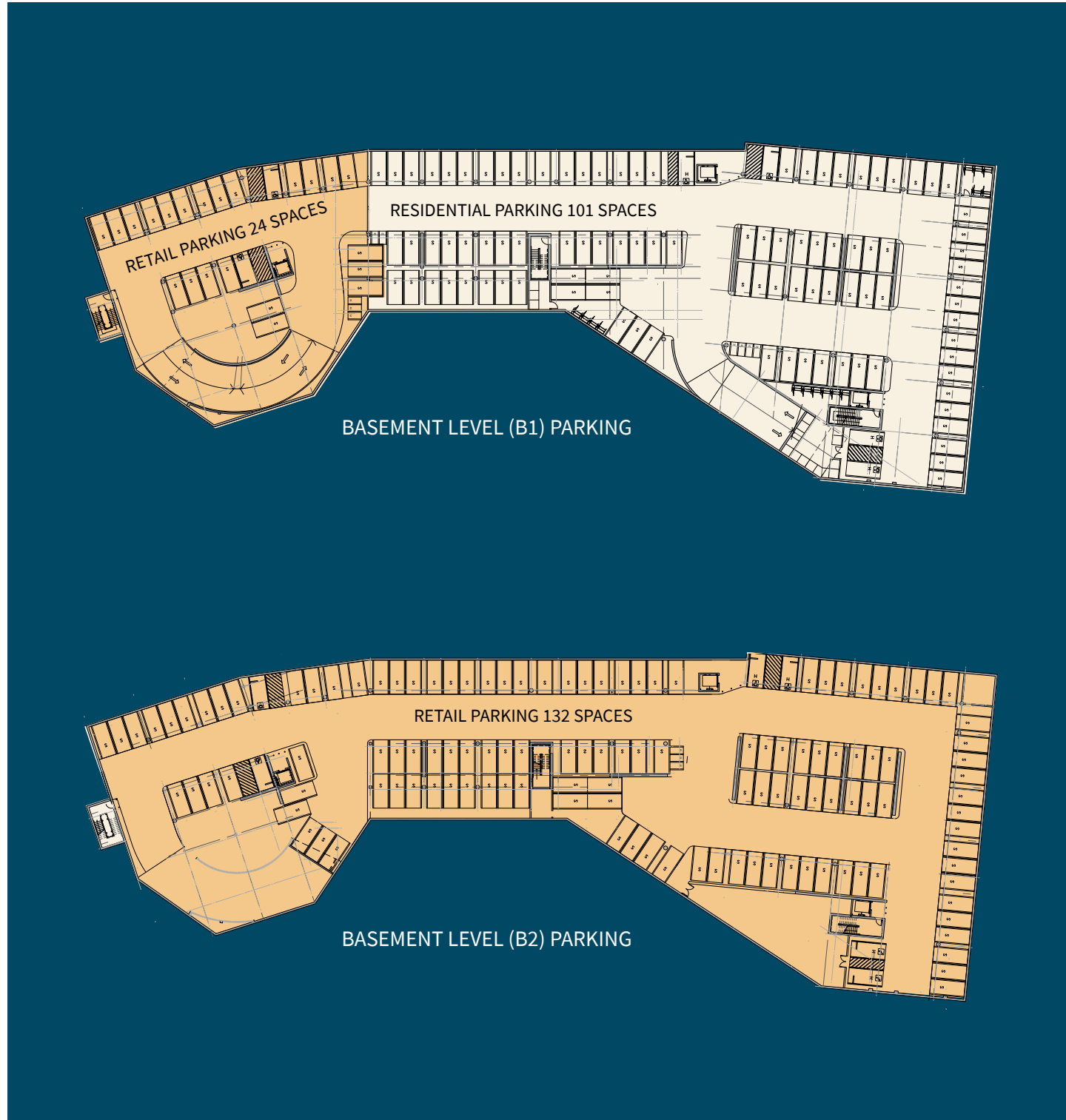
# THRIVING RETAIL ENVIRONMENT

## Premium Retail Space in Downtown Walnut Creek

- ▶ 34,661 SF of ground floor retail space in Northern California's top retail downtown
- ▶ Anchored by California Pizza Kitchen with prime corner anchor space available. Cotenants include T Mobile, Pacific Catch and The Shade Store
- ▶ Located on Main St, directly opposite Walnut Creek's Broadway Plaza, anchored by Neiman Marcus, Nordstrom, Macys and Crate & Barrel
- ▶ On-site parking for approximately 200 cars
- ▶ Striking, contemporary architecture



# CONVENIENT PARKING



# SITE PLAN



## Tenants

- Pacific Catch
- The Shade Store
- Circa Lighting
- T Mobile
- Poppy Bank
- Marvel Cakes

## Availabilities

- A - 5,900 SF Available
  - Available 7/1/2024
  - Second generation restaurant space
- B - 3,240 SF Available



**ESSEX**  
PROPERTY TRUST, INC.

**Ben Lazzareschi**  
Managing Director  
+ 1 415 228 3070  
ben.lazzareschi@jll.com  
RE Lic # 01414579

**Jeff Badstubner**  
Managing Director  
+1 415 395 4900  
jeff.badstubner@jll.com  
RE Lic # 01155279

**Justin Choi**  
Vice President  
+1 925 858 6041  
justin.choi@jll.com  
RE Lic # 02107928

