

# For

# Lease

## *Triangle Towers*

**4853 Cordell Avenue  
Bethesda, Maryland**

### 16TH FLOOR

Suite PH – 540 SF

Suite PH 1 - 1,830 SF

Suite PH 11 - 2,151 SF

- \$28.50 per SF, full service
- 5-10 year term
- Available immediately
- Parking ratio 4 / 1,000 SF
- 24-hour HVAC

*For more details  
or to arrange a tour  
please contact:*

**301.961.9696**

**Mark Rittenberg**

Ext. 204

[mark@amrcommercial.com](mailto:mark@amrcommercial.com)



**Triangle Towers is located in the heart of the Woodmont Triangle. Surrounded by restaurants and shops, this space is just a short walk to the Bethesda Metro Station.**

Although all information is furnished regarding for sale, rental or financing is from sources we deem reliable, such information has not been verified and no express representation is made nor is any to be implied as to the accuracy thereof, and it is submitted subject to errors, omissions, changes of price, rental or other conditions, prior sale, lease or financing or withdrawal without notice.



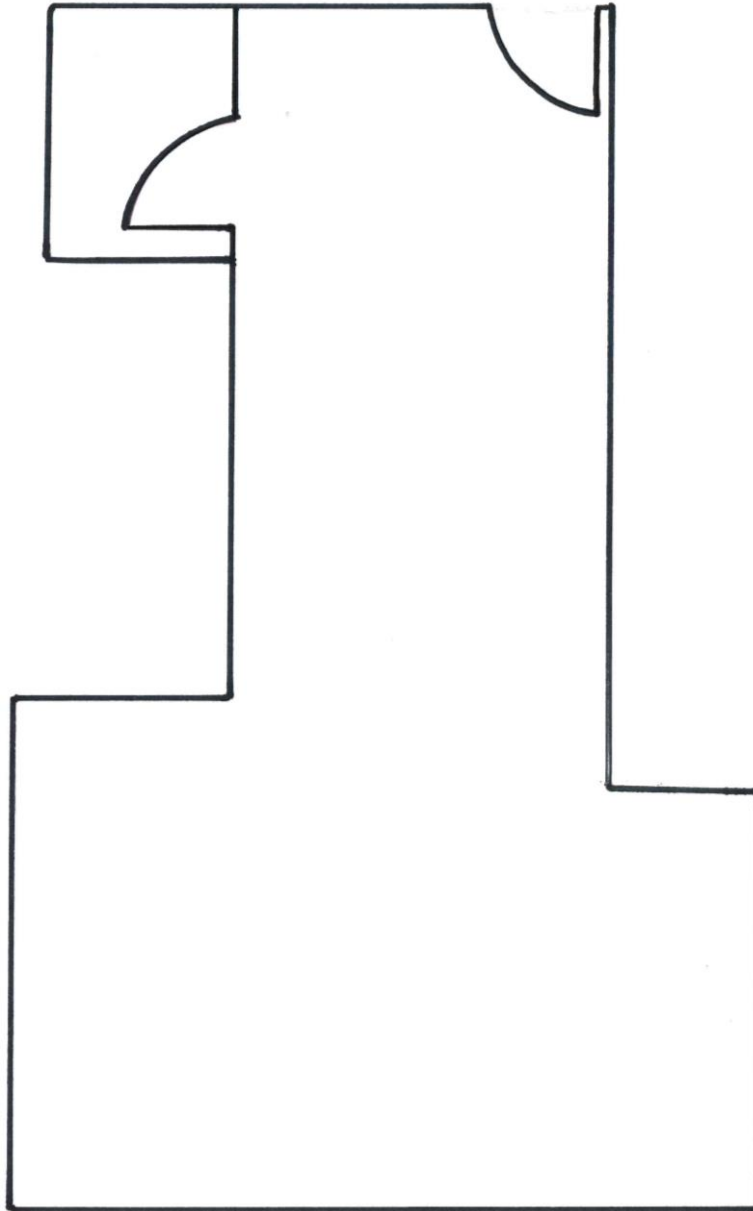
ALEXANDER, MONTROSE, RITTENBERG  
Commercial Real Estate Brokerage  
Est. 1994

*Celebrating*  
**28**  
*Years*  
1994-2022

A Member of **CORE**  
COMMERCIAL REAL ESTATE

**Triangle Towers  
4853 Cordell Avenue  
Bethesda, Maryland 20814**

**PH  
540 S.F.**



Although all information is furnished regarding for sale, rental or financing is from sources we deem reliable, such information has not been verified and no express representation is made nor is any to be implied as to the accuracy thereof, and it is submitted subject to errors, omissions, changes of price, rental or other conditions, prior sale, lease or financing or withdrawal without notice.



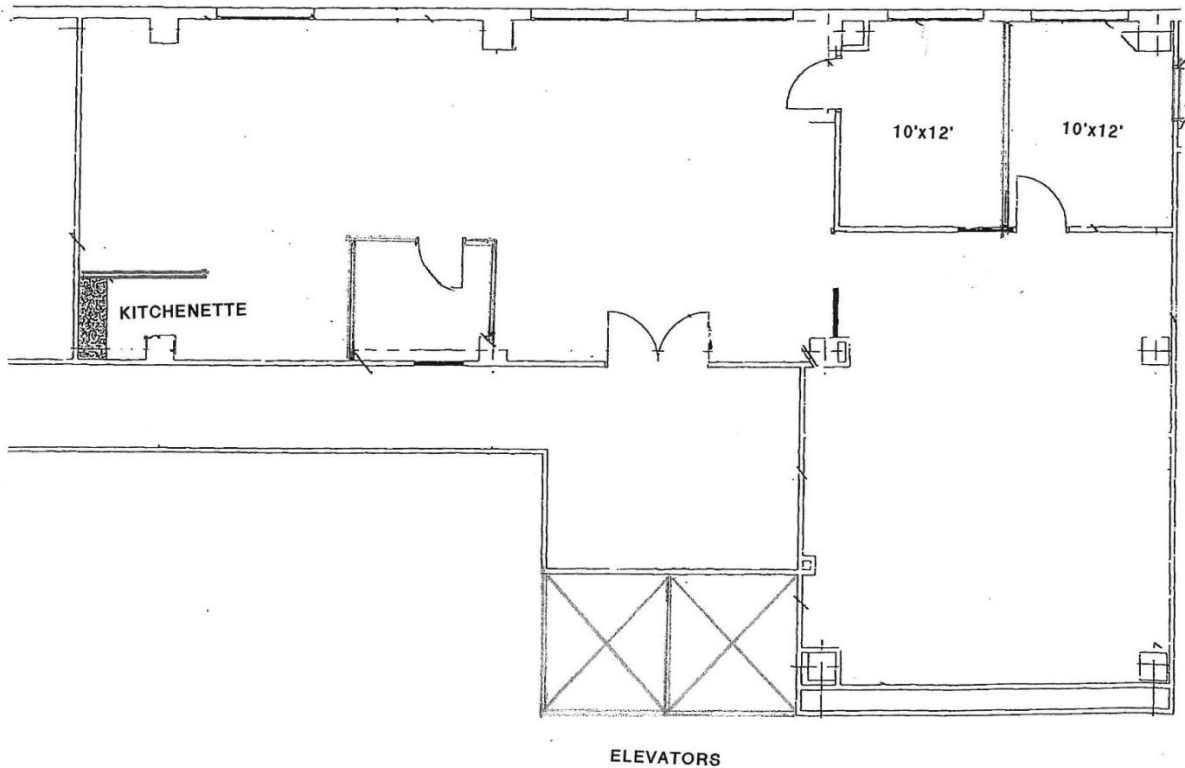
**ALEXANDER, MONTROSE, RITTENBERG**  
Commercial Real Estate Brokerage  
*Est. 1994*

*Celebrating*  
**28**  
*Years*  
1994-2022

A Member of **CORE**  
NETWORK

**Triangle Towers**  
**4853 Cordell Avenue**  
**Bethesda, Maryland 20814**

**PH 1**  
**1,830 S.F.**



Although all information is furnished regarding for sale, rental or financing is from sources we deem reliable, such information has not been verified and no express representation is made nor is any to be implied as to the accuracy thereof, and it is submitted subject to errors, omissions, changes of price, rental or other conditions, prior sale, lease or financing or withdrawal without notice.



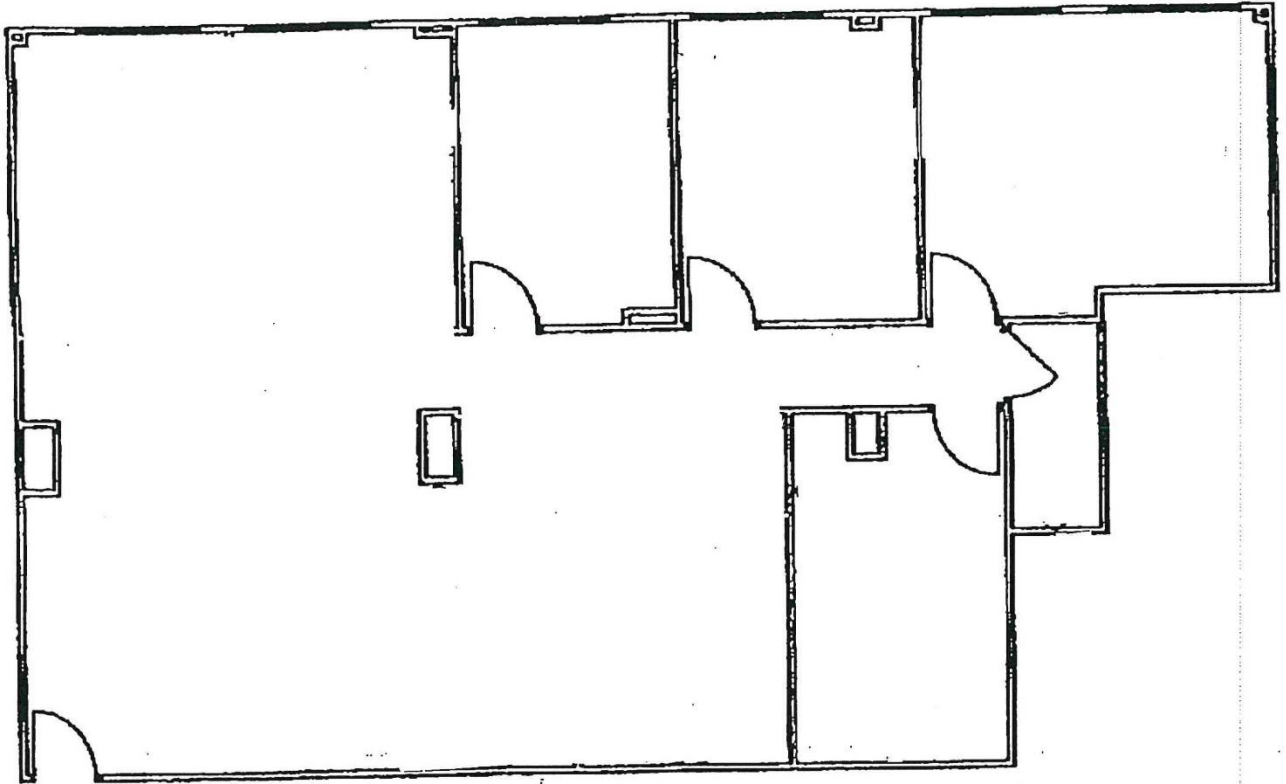
ALEXANDER, MONTROSE, RITTENBERG  
Commercial Real Estate Brokerage  
Est. 1994

*Celebrating*  
**28**  
*Years*  
1994-2022

A Member of **CORE**  
NETWORK

**Triangle Towers  
4853 Cordell Avenue  
Bethesda, Maryland 20814**

**PH 11  
2,151 S.F.**



Although all information is furnished regarding for sale, rental or financing is from sources we deem reliable, such information has not been verified and no express representation is made nor is any to be implied as to the accuracy thereof, and it is submitted subject to errors, omissions, changes of price, rental or other conditions, prior sale, lease or financing or withdrawal without notice.



**ALEXANDER, MONTROSE, RITTENBERG**  
Commercial Real Estate Brokerage  
*Est. 1994*

*Celebrating*  
**28**  
*Years*  
1994-2022

A Member of **CORE**  
NETWORK

4849 Rugby Avenue ♦ Suite 200 ♦ Bethesda, Maryland 20814 ♦ 301.961.9696 ♦ Fax 301.656.7551 ♦ [www.amrcommercial.com](http://www.amrcommercial.com)

# Triangle Towers 4853 Cordell Avenue



Although all information is furnished regarding for sale, rental or financing is from sources we deem reliable, such information has not been verified and no express representation is made nor is any to be implied as to the accuracy thereof, and it is submitted subject to errors, omissions, changes of price, rental or other conditions, prior sale, lease or financing or withdrawal without notice.



ALEXANDER, MONTROSE, RITTENBERG  
Commercial Real Estate Brokerage  
Est. 1994

Celebrating  
**28**  
Years  
1994-2022

A Member of **CORE**  
NETWORK

4849 Rugby Avenue ♦ Suite 200 ♦ Bethesda, Maryland 20814 ♦ 301.961.9696 ♦ Fax 301.656.7551 ♦ www.amrcommercial.com