

SQUARE FOOTAGE	
LIVING 1:	953 SF
LIVING 2:	953 SF
STAIR WELL:	172 SF
<b>TOTAL (1 FLOOR):</b>	<b>2,078 SF</b>

**BLUEPRINT APPROVED**

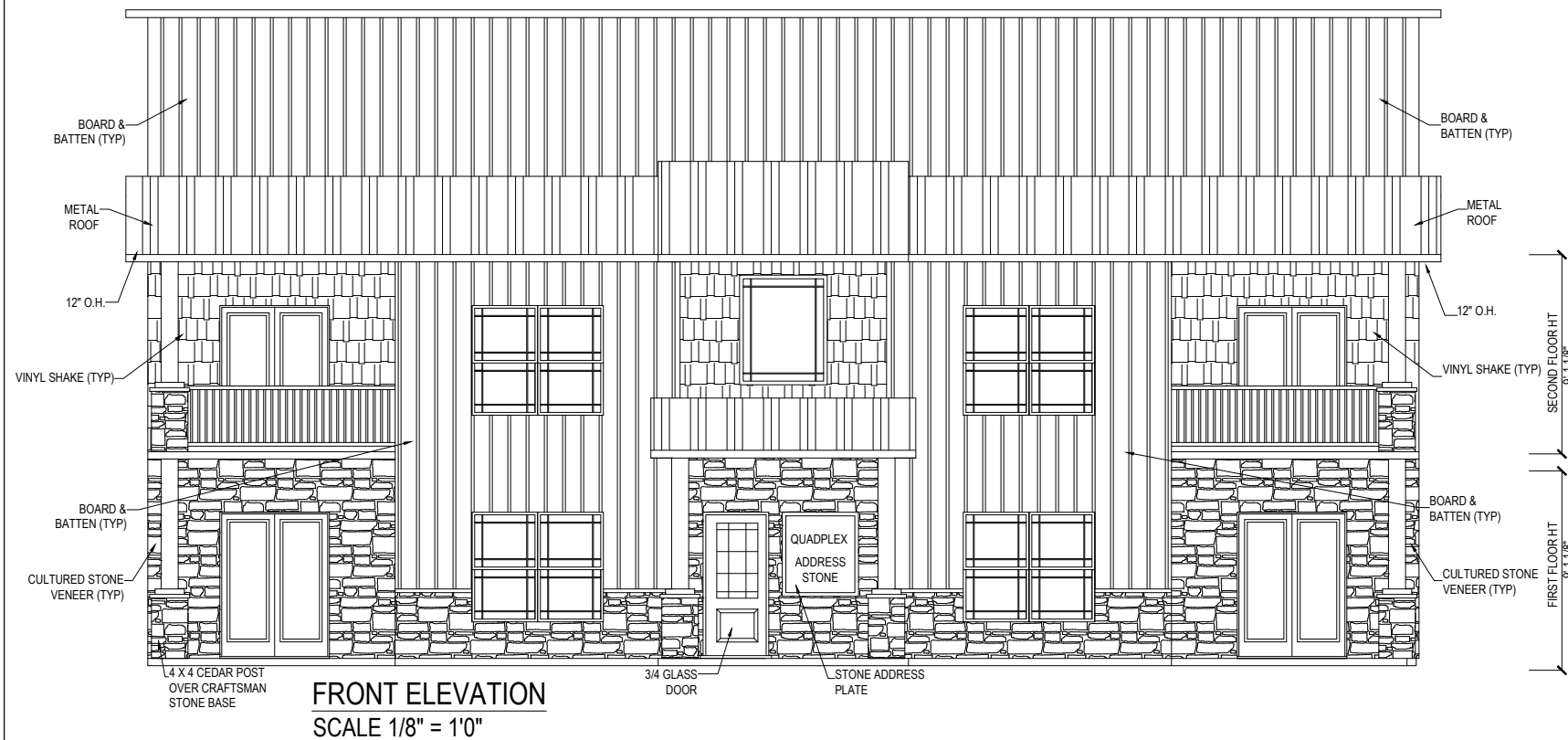
Kiracofe Rep: \_\_\_\_\_  
 Homeowner: \_\_\_\_\_  
 Date: \_\_\_\_\_

Any revisions made after blueprint approval will incur a minimum charge of \$300 in addition to the incurred cost of the physical changes to the house.

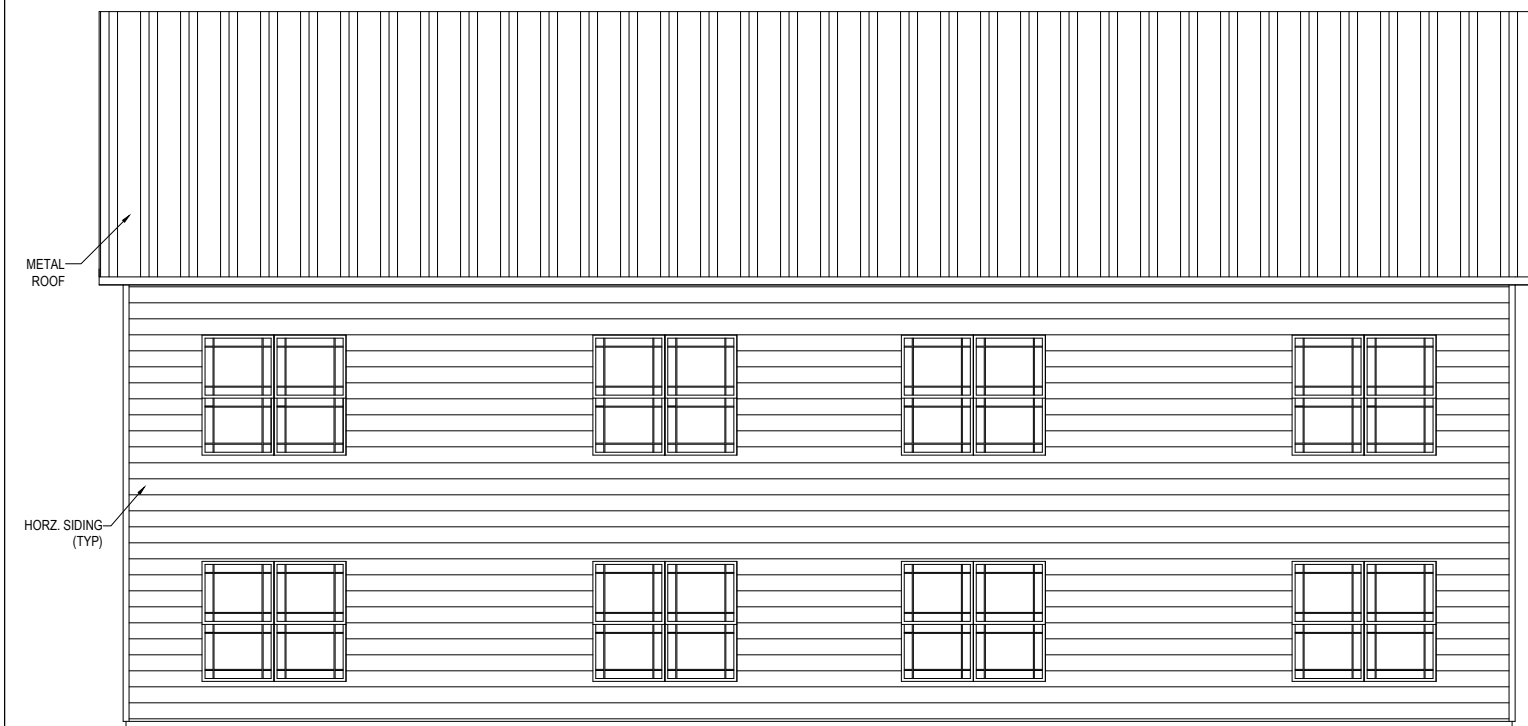
# ELEVATIONS QUADPLEX

DATE: \_\_\_\_\_  
 REVISION: \_\_\_\_\_  
 INFO: \_\_\_\_\_

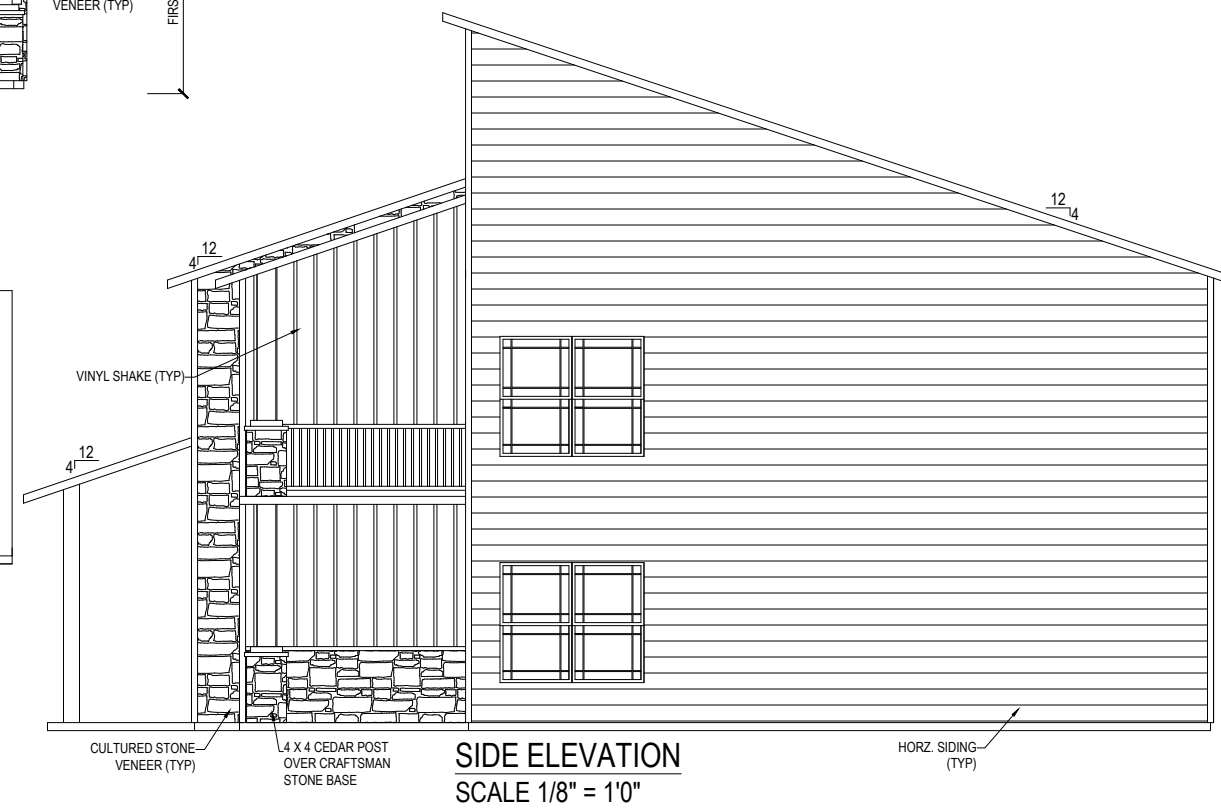
**1  
SHEET**



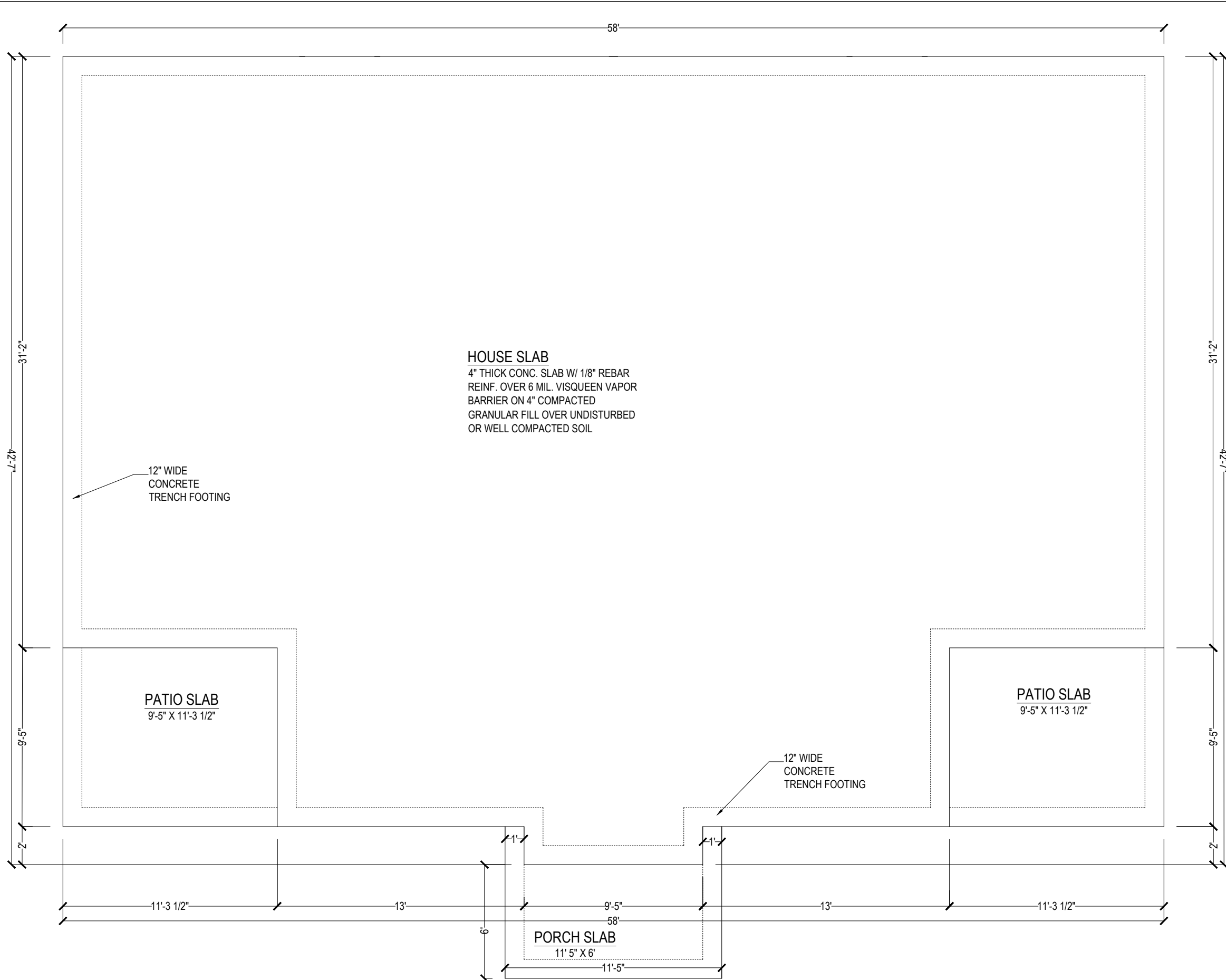
**FRONT ELEVATION**  
SCALE 1/8" = 1'0"



**REAR ELEVATION**  
SCALE 1/8" = 1'0"



**SIDE ELEVATION**  
SCALE 1/8" = 1'0"



## FOUNDATION PLAN

SCALE 3/16" = 1'0"

- NOTES:**
1. EXTERIOR FOOTERS TO BE 3000 PSI.
  2. ALL INTERIOR CONCRETE TO CONSISTS OF 6 BAG MIX.
  3. ALL EXTERIOR CONCRETE TO CONSIST OF A 6 1/2 BAG MIX.



SQUARE FOOTAGE	
LIVING 1:	953 SF
LIVING 2:	953 SF
STAIR WELL:	172 SF
TOTAL (1 FLOOR):	2,078 SF

**BLUEPRINT APPROVED**

Kiracofe Rep: \_\_\_\_\_  
 Homeowner: \_\_\_\_\_  
 Date: \_\_\_\_\_

Any revisions made after blueprint approval will incur a minimum charge of \$300 in addition to the incurred cost of the physical changes to the house.

# FOUNDATION QUADPLEX

DATE: \_\_\_\_\_  
 REVISION: \_\_\_\_\_  
 INFO: \_\_\_\_\_

# GROUND FLOOR PLAN

SCALE 3/16" = 1'0"

- NOTES:
1. INSTALL GAS LINE TO RANGE
  2. ENSURE ELECTRICAL CONDUIT RAN TO CENTER OF KITCHEN ISLAND
  3. WALLS THICKER THAN 2 X 4 BEARING WALLS SHADED DARKER.

SQUARE FOOTAGE	
LIVING 1:	953 SF
LIVING 2:	953 SF
STAIR WELL:	172 SF
TOTAL (1 FLOOR):	2,078 SF

**BLUEPRINT APPROVED**

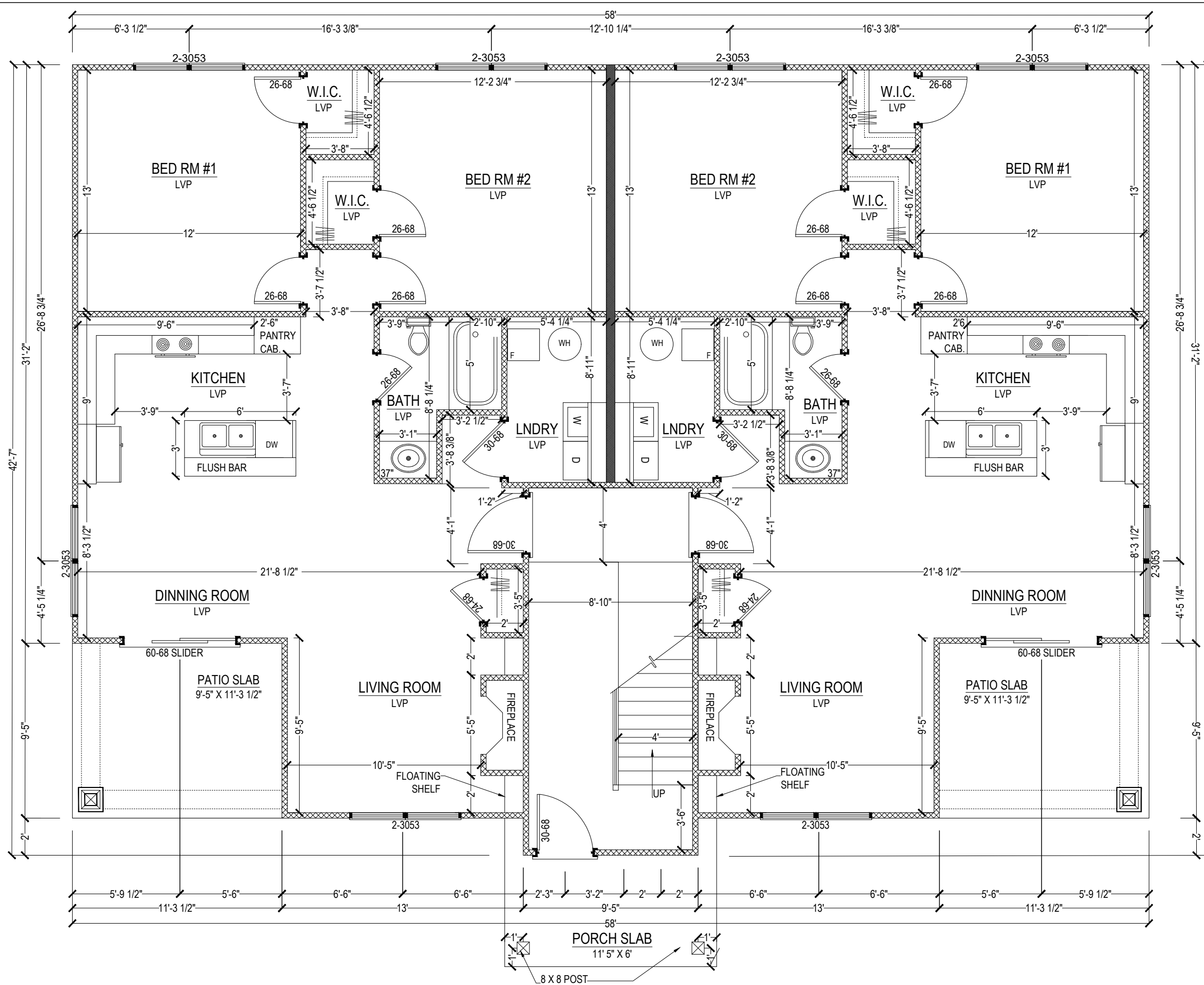
Kiracofe Rep: \_\_\_\_\_  
 Homeowner: \_\_\_\_\_  
 Date: \_\_\_\_\_

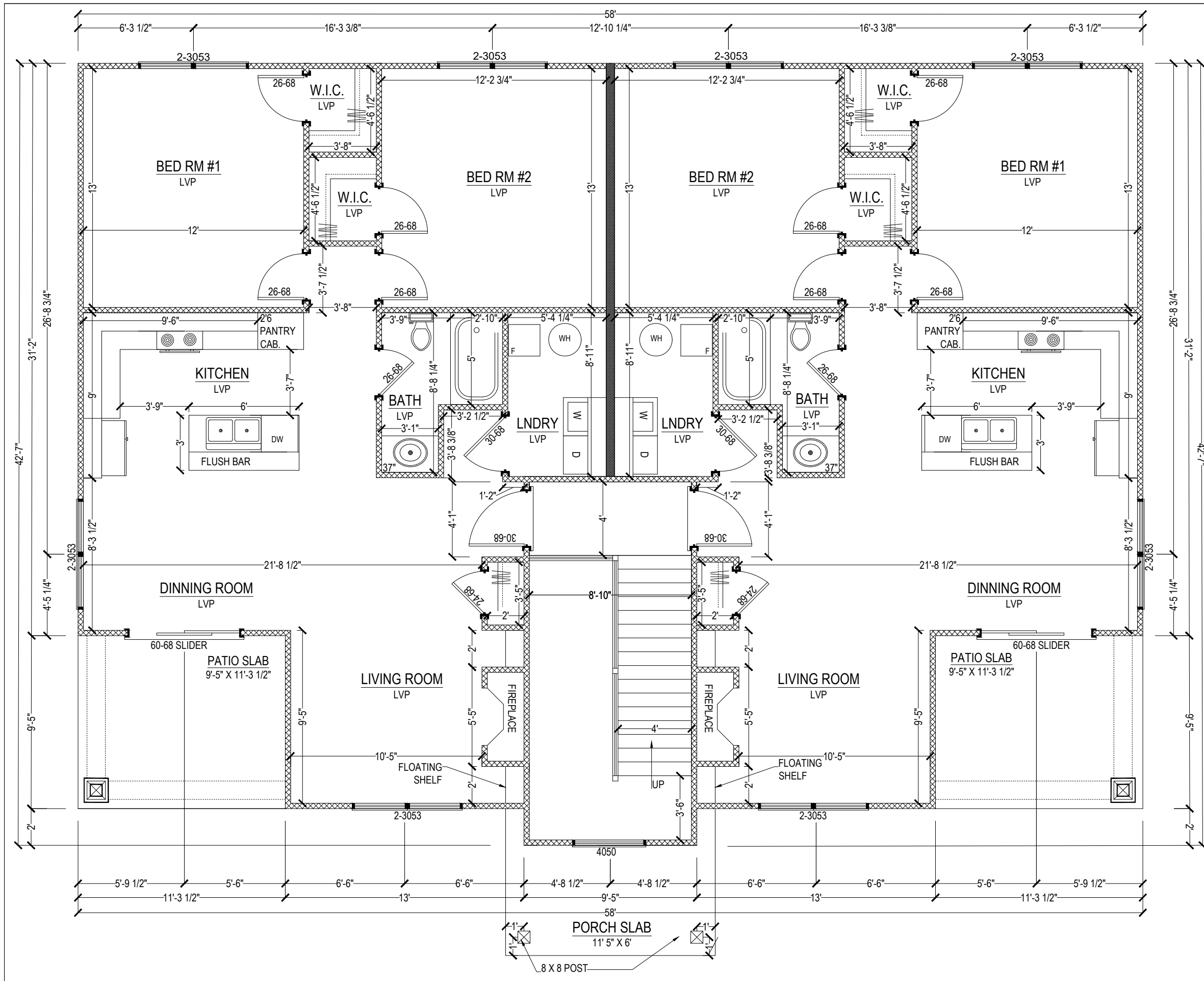
Any revisions made after blueprint approval will incur a minimum charge of \$300 in addition to the incurred cost of the physical changes to the house.

# FIRST FLOOR PLAN QUADPLEX

DATE: \_\_\_\_\_  
 REVISION: \_\_\_\_\_  
 INFO: \_\_\_\_\_

**3 SHEET**





## SECOND FLOOR PLAN

SCALE 3/16" = 1'0"

- NOTES:
1. INSTALL GAS LINE TO RANGE
  2. ENSURE ELECTRICAL CONDUIT RAN TO CENTER OF KITCHEN ISLAND
  3. WALLS THICKER THAN 2 X 4 BEARING WALLS SHADED DARKER.



SQUARE FOOTAGE	
LIVING 1:	953 SF
LIVING 2:	953 SF
STAIR WELL:	172 SF
TOTAL (1 FLOOR):	2,078 SF

**BLUEPRINT APPROVED**

Kiracofe Rep: \_\_\_\_\_  
 Homeowner: \_\_\_\_\_  
 Date: \_\_\_\_\_

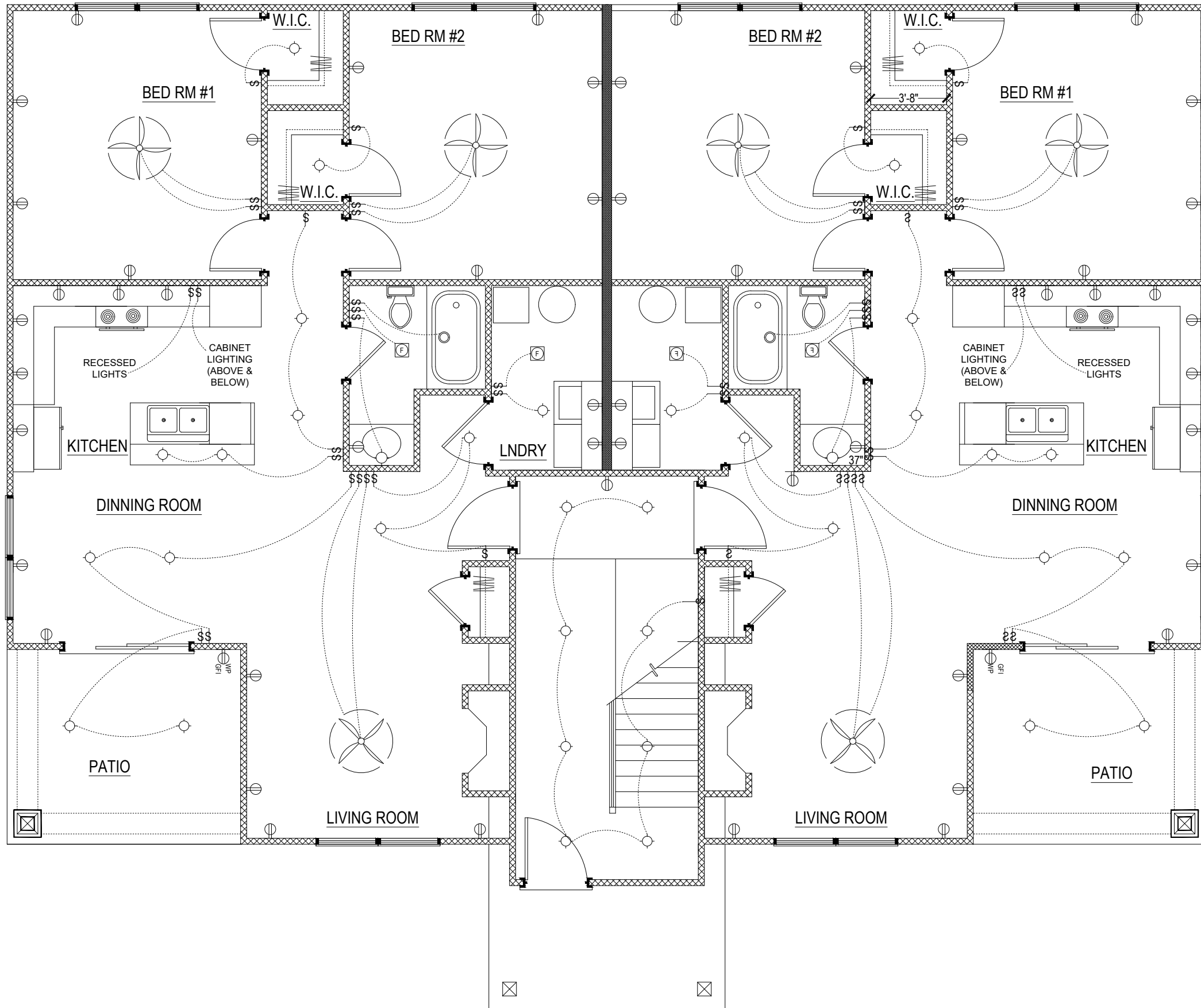
Any revisions made after blueprint approval will incur a minimum charge of \$300 in addition to the incurred cost of the physical changes to the house.

# 2ND FLOOR PLAN QUADPLEX

DATE: \_\_\_\_\_  
 REVISION: \_\_\_\_\_  
 INFO: \_\_\_\_\_

**4 SHEET**

# GROUND FLOOR ELECTRIC PLAN SCALE 3/16" = 1'0"



ELECTRICAL LEGEND	
SYMBOLS	DESCRIPTION
	110 OUTLET-DUPLEX
	110 OUTLET-GFI
	WEATHERPROOF GFI RECEPTACLE
	220 RECEPTACLE
	110 FLOOR OUTLET
	SINGLE LIGHT SWITCH
	CEILING MOUNTED FIXTURE
	WALL MOUNTED FIXTURE
	RECESSED FIXTURE
	LED LIGHT FIXTURE
	EXHAUST FAN/ LIGHT COMBO
	EXHAUST FAN
	SMOKE DETECTOR
	CABLE OUTLET
	PHONE JACK
	GARAGE DOOR OPENER PRE-WIRE
	AUDIO WIRE HOOKUP
	SURROUND SOUND SPEAKER
	CEILING FAN

SQUARE FOOTAGE	
LIVING 1:	953 SF
LIVING 2:	953 SF
STAIR WELL:	172 SF
TOTAL (1 FLOOR):	2,078 SF

**BLUEPRINT APPROVED**

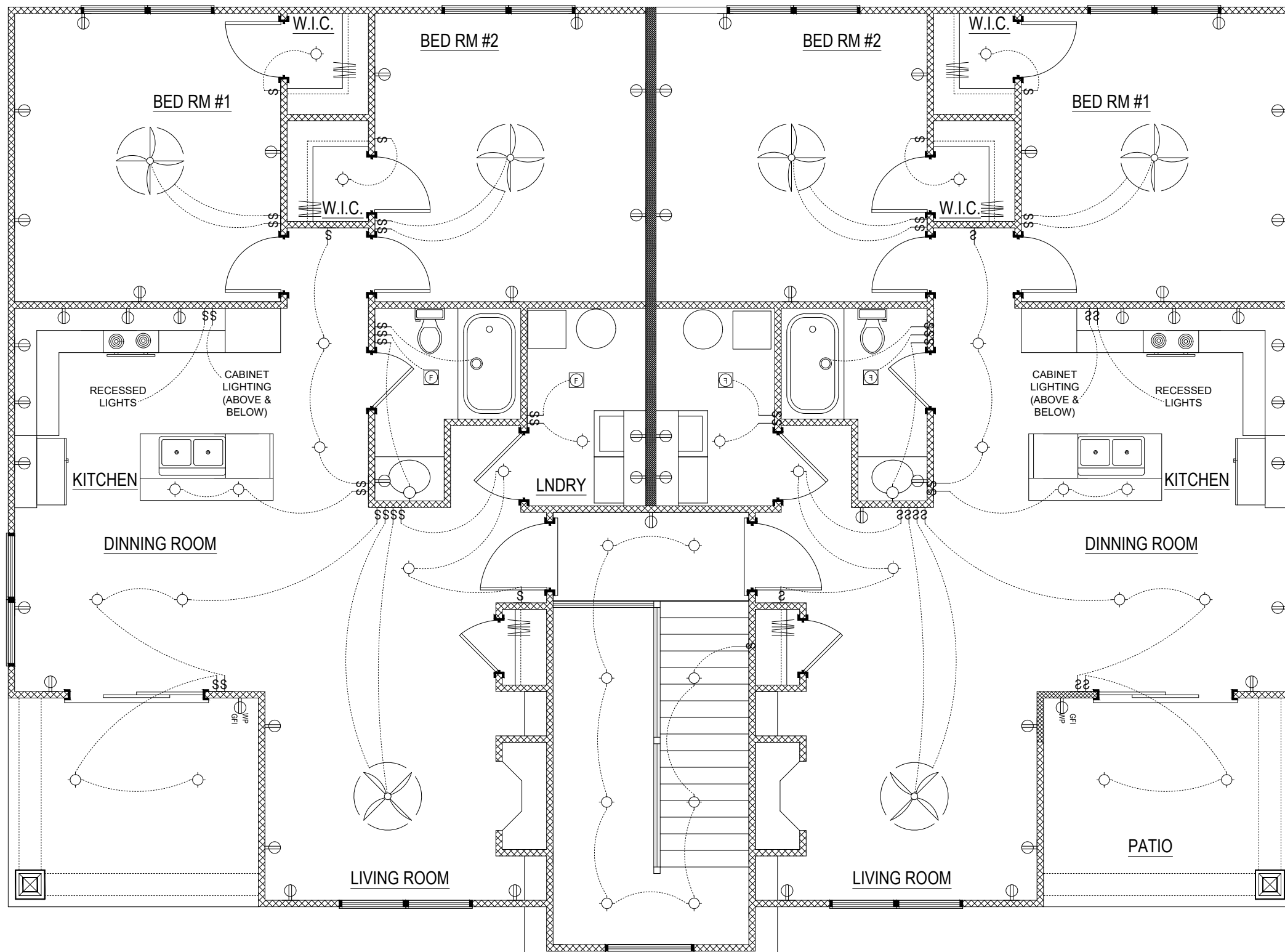
Kiracofe Rep: \_\_\_\_\_  
 Homeowner: \_\_\_\_\_  
 Date: \_\_\_\_\_

Any revisions made after blueprint approval will incur a minimum charge of \$300 in addition to the incurred cost of the physical changes to the house.

# ELECTRIC PLAN QUADPLEX

DATE: \_\_\_\_\_  
 REVISION: \_\_\_\_\_  
 INFO: \_\_\_\_\_

## SECOND FLOOR ELECTRIC PLAN SCALE 3/16" = 1'0"



ELECTRICAL LEGEND	
SYMBOLS	DESCRIPTION
	110 OUTLET-DUPLEX
	110 OUTLET-GFI
	WEATHERPROOF GFI RECEPTACLE
	220 RECEPTACLE
	110 FLOOR OUTLET
	SINGLE LIGHT SWITCH
	CEILING MOUNTED FIXTURE
	WALL MOUNTED FIXTURE
	RECESSED FIXTURE
	LED LIGHT FIXTURE
	EXHAUST FAN/ LIGHT COMBO
	EXHAUST FAN
	SMOKE DETECTOR
	CABLE OUTLET
	PHONE JACK
	GARAGE DOOR OPENER PRE-WIRE
	AUDIO WIRE HOOKUP
	SURROUND SOUND SPEAKER
	CEILING FAN

SQUARE FOOTAGE	
LIVING 1:	953 SF
LIVING 2:	953 SF
STAIR WELL:	172 SF
TOTAL (1 FLOOR):	2,078 SF

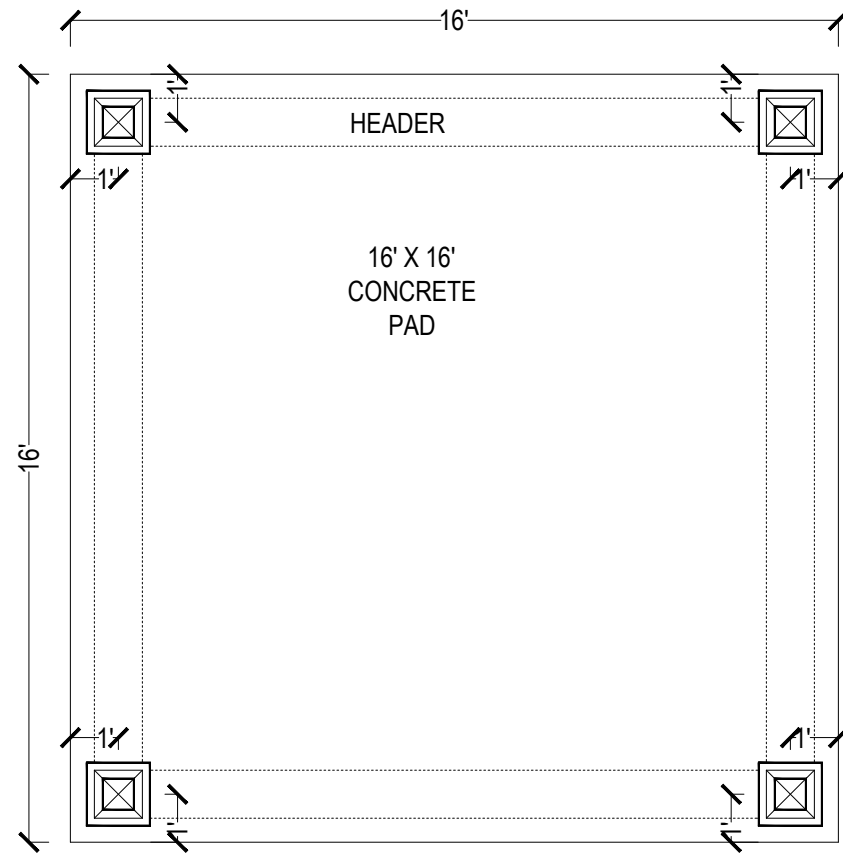
**BLUEPRINT APPROVED**

Kiracofe Rep: \_\_\_\_\_  
 Homeowner: \_\_\_\_\_  
 Date: \_\_\_\_\_

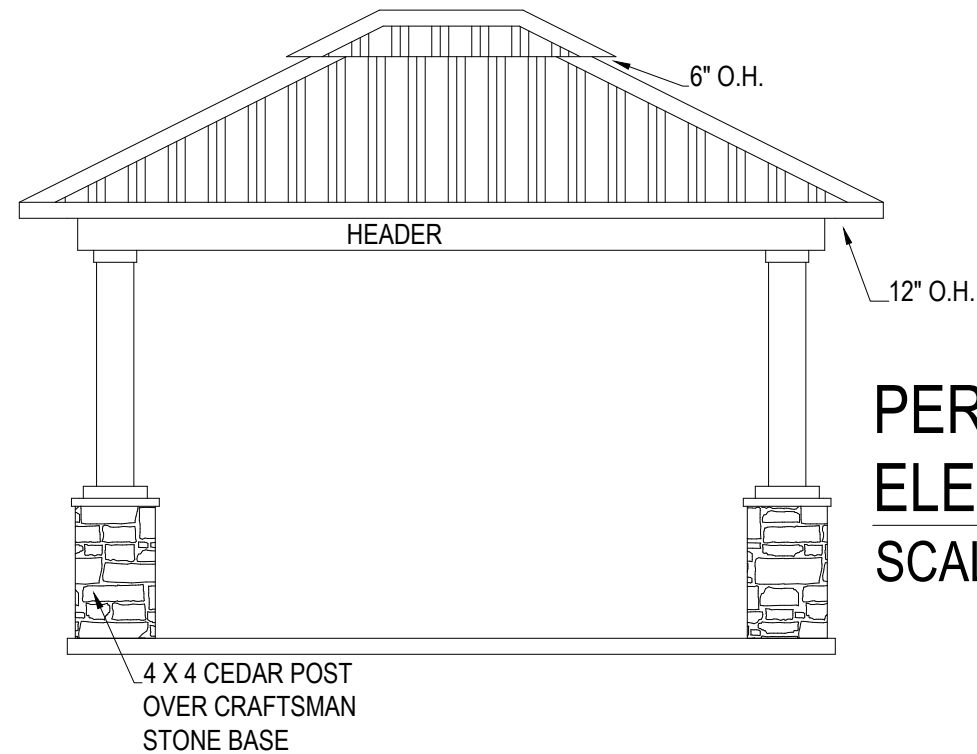
Any revisions made after blueprint approval will incur a minimum charge of \$300 in addition to the incurred cost of the physical changes to the house.

# ELECTRIC PLAN QUADPLEX

DATE: \_\_\_\_\_  
 REVISION: \_\_\_\_\_  
 INFO: \_\_\_\_\_



**PERGOLA PLAN**  
SCALE 1/4" = 1'0"



**PERGOLA ELEVATION**  
SCALE 1/4" = 1'0"



SQUARE FOOTAGE	
LIVING 1:	953 SF
LIVING 2:	953 SF
STAIR WELL:	172 SF
TOTAL (1 FLOOR):	2,078 SF

**BLUEPRINT APPROVED**  
 Kiracofe Rep: \_\_\_\_\_  
 Homeowner: \_\_\_\_\_  
 Date: \_\_\_\_\_  
 Any revisions made after blueprint approval will incur a minimum charge of \$300 in addition to the incurred cost of the physical changes to the house.

**PERGOLA PLAN  
QUADPLEX**

DATE: \_\_\_\_\_  
 REVISION: \_\_\_\_\_  
 INFO: \_\_\_\_\_