

20455 Lorain Rd

Up to 9,906 SF For Lease
in 45,000 RSF Three-Story
Medical/Office Building



Fairview Park, OH 44126

CBRE

Situated on a \pm 3.29-acre site abutting the Cleveland Metroparks, this 45,000 RSF three-story medical/office building currently has availabilities ranging from 1,300 RSF to 5,242 RSF.



Former surgical center
on Terrace level



Minutes to I-480
and I-90



Convenient to
Cleveland Hopkins
International Airport



165 surface
parking spaces

AVAILABLE SUITES

Suite 103
1,563 SF

T01
5,242 SF

T03
1,801 SF

T04
1,300 SF



MAIN BUILDING | LOBBY



SUITE T01 | RECOVERY ROOM



SUITE T02 | WAITING ROOM



SUITE T02 | EXAM ROOM

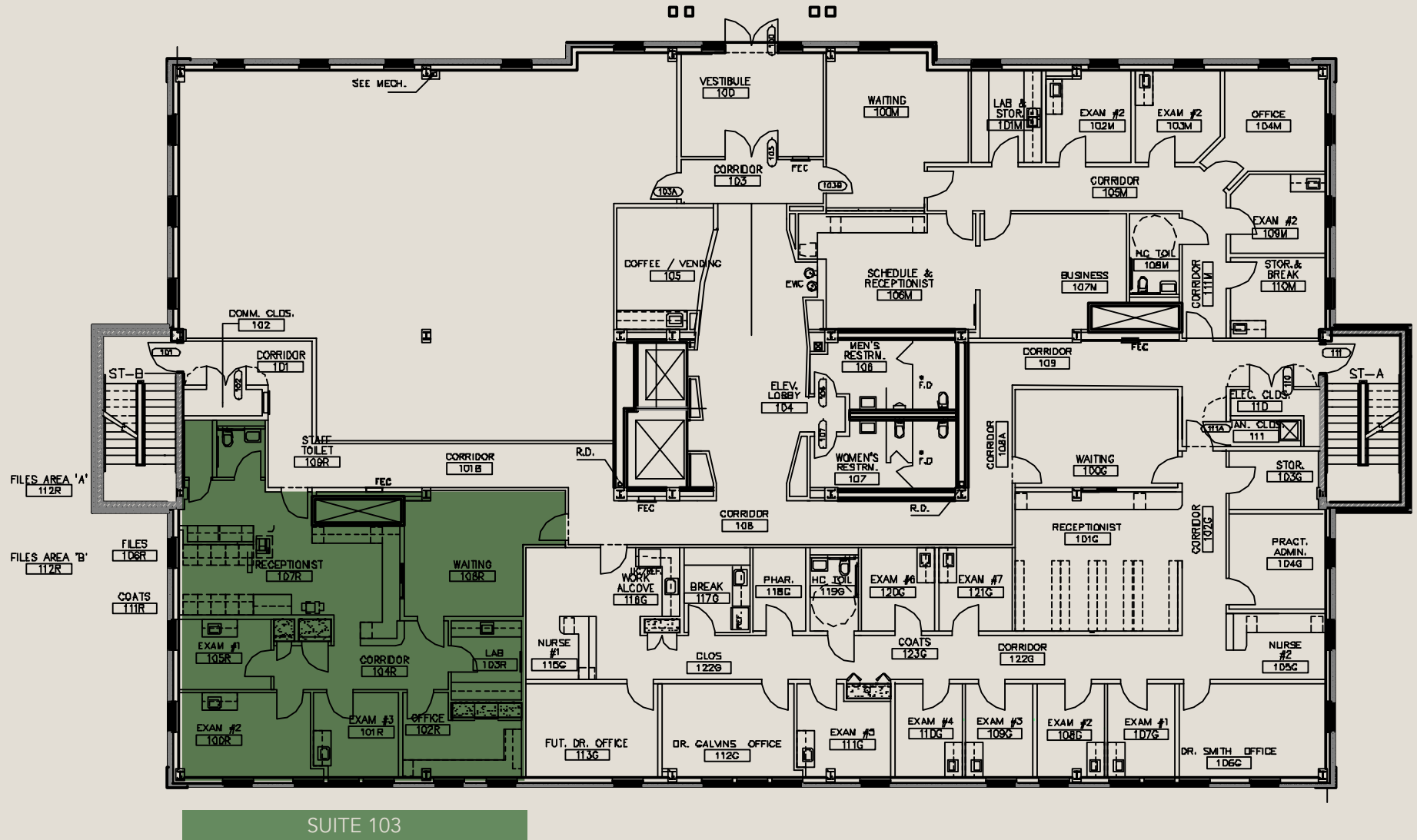


SUITE T02 | EXAM ROOM 2

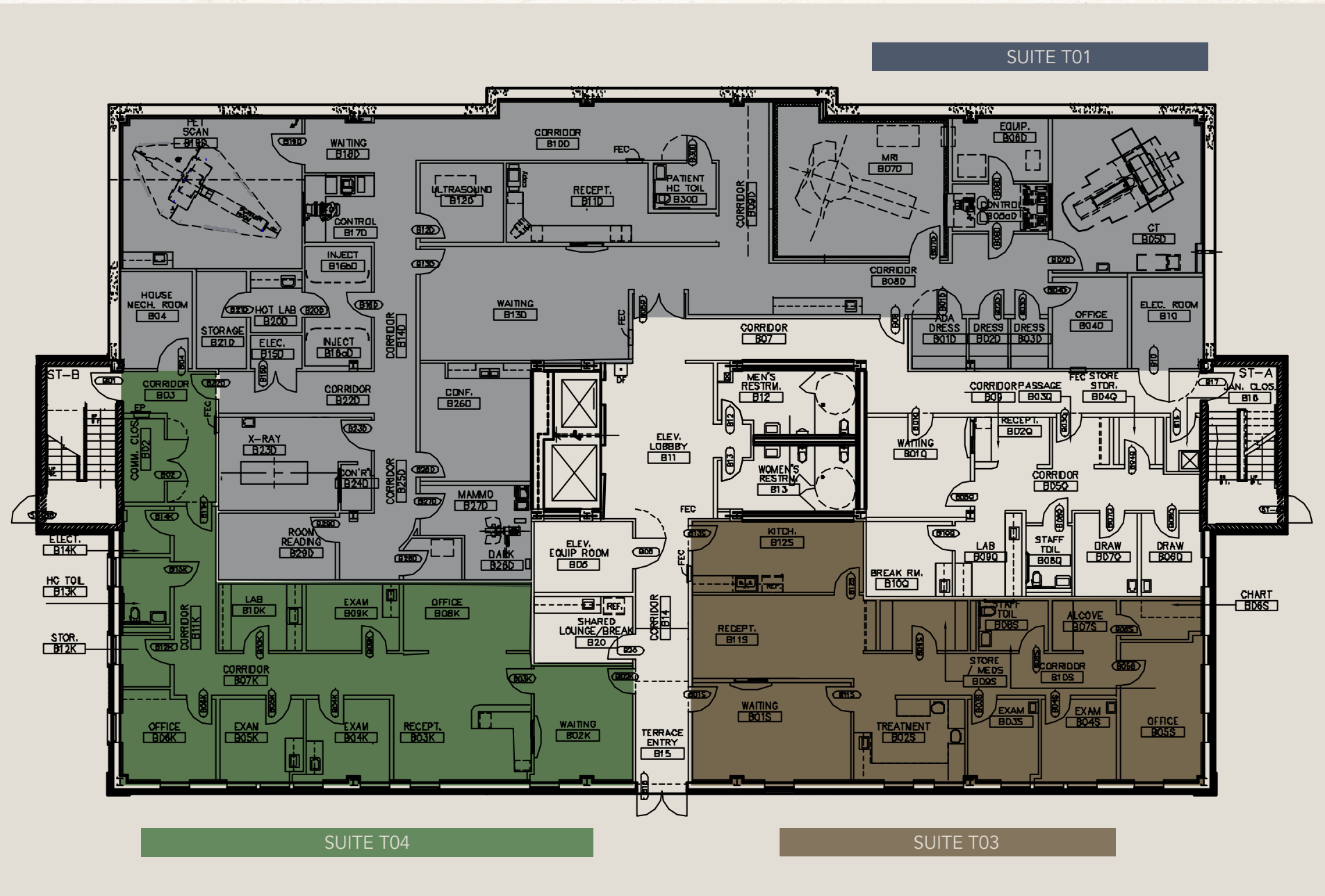


SUITE 105 | EXAM ROOM

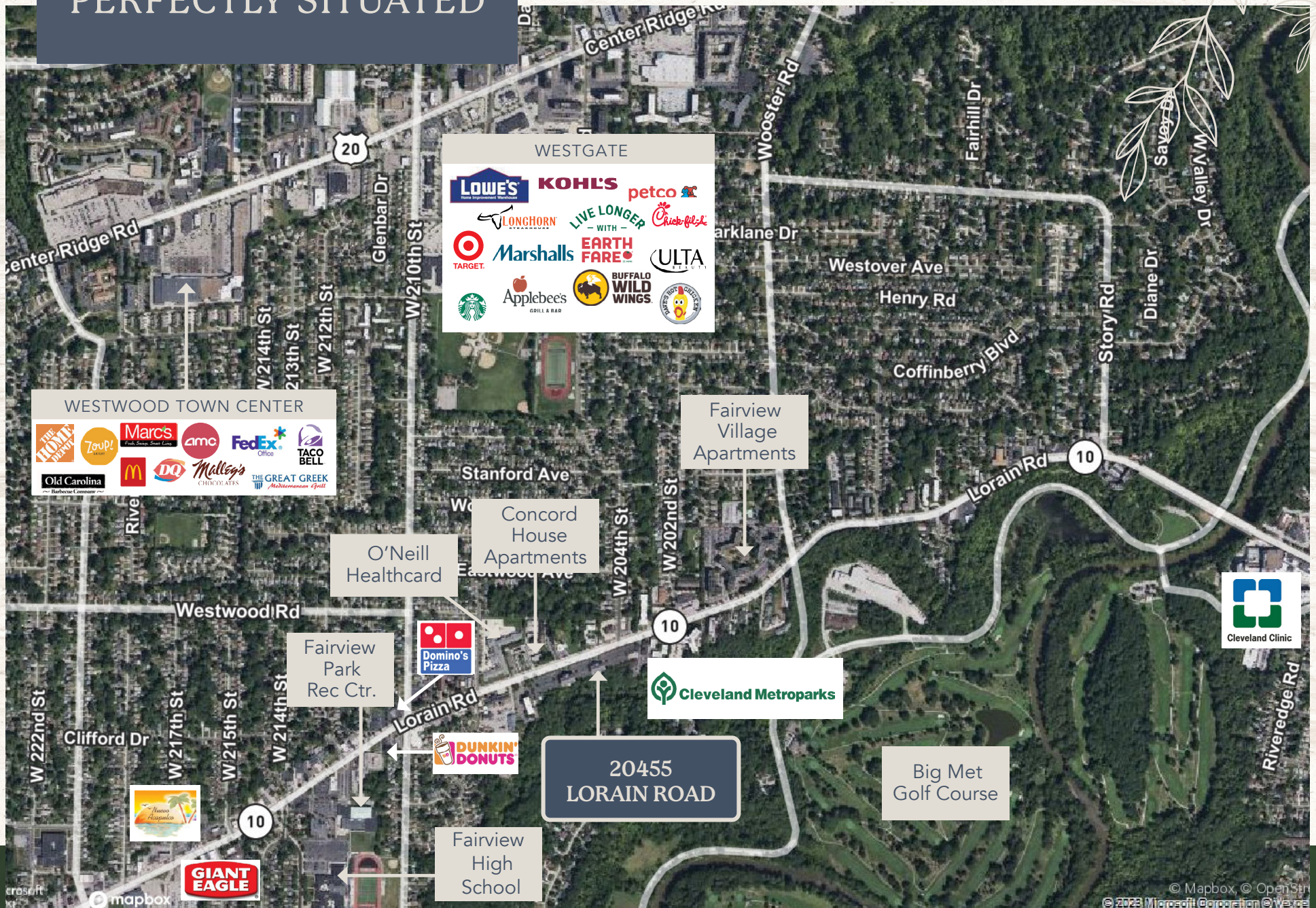
First Floor Plan



Terrace Level Plan



PERFECTLY SITUATED



CONTACT US

Mike Petrigan

Senior Vice President
+1 216 363 6435
mike.petrigan@cbre.com

Daniel Mayer

Vice President
+1 216 363 6437
daniel.mayer@cbre.com

