

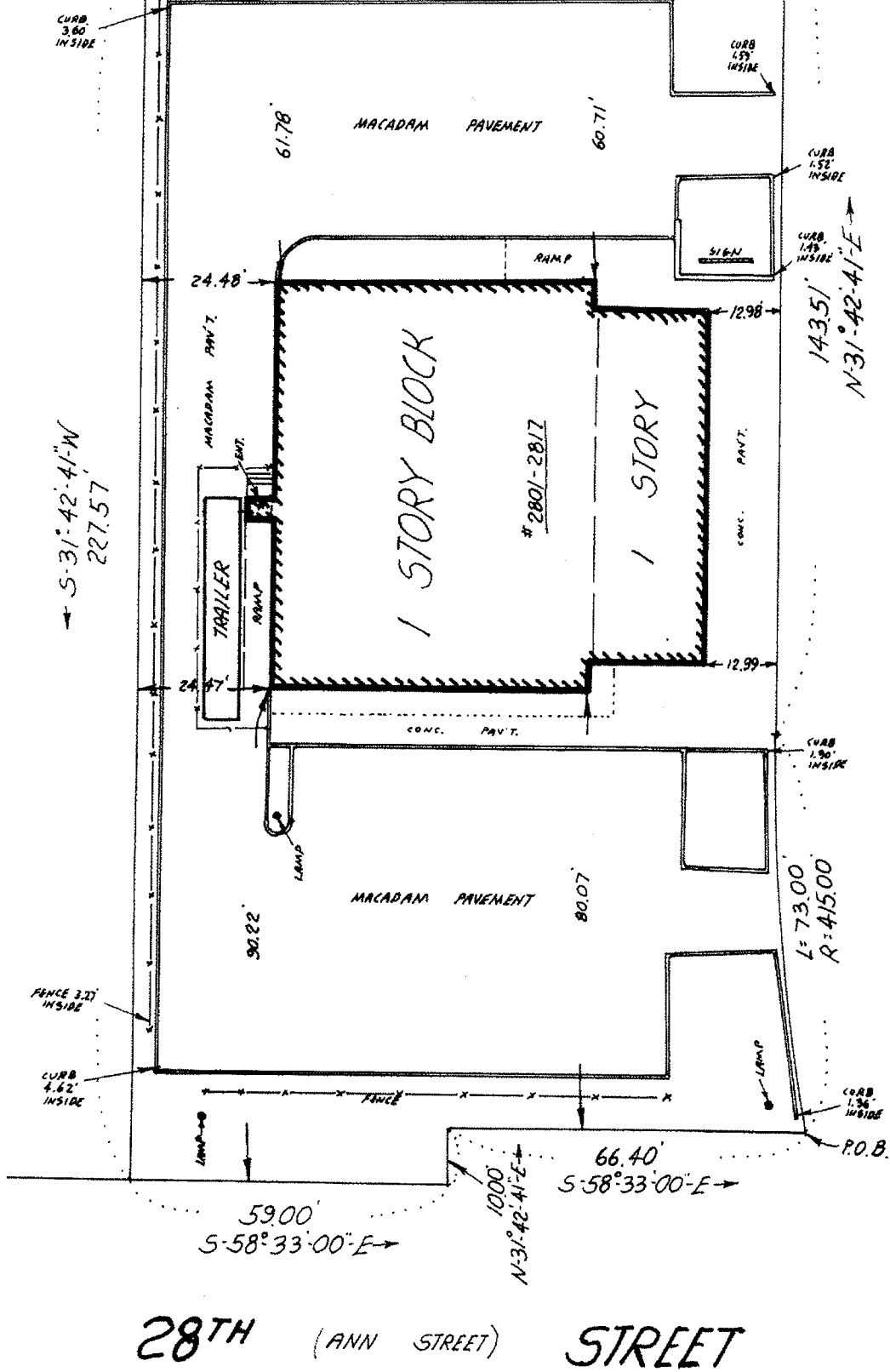
Description of 2801-2815 Kennedy Boulevard, Township of North Bergen, Hudson County, New Jersey

BEGINNING at a point formed by the intersection of the northwesterly side of Kennedy Boulevard and the northeasterly side of 28<sup>th</sup> Street, and from thence running;

- (1) Along the northeasterly side of Kennedy Boulevard on a curve to the right having a radius of 415.00', an arc distance of 73.00' to a point; thence
- (2) Still along the same, N 31 degrees 42 minutes 41 seconds E, a distance of 143.51' to a point; thence
- (3) N 57 degrees 52 minutes 13 seconds W, a distance of 119.00' to a point; thence
- (4) S 31 degrees 42 minutes 41 seconds E, a distance of 227.57' to the northeasterly side of 28<sup>th</sup> Street; thence
- (5) Along the same, S 58 degrees 33 minutes 00 seconds E, a distance of 59.00' to a point; thence
- (6) Still along the same, N 31 degrees 42 minutes 41 seconds E, a distance of 10.00' to a point; thence
- (7) Still along the same, S 58 degrees 33 minutes 00 seconds E, a distance of 66.40' to the point and place of BEGINNING.

Known as Lots 2 and 3 in Block 60 on the Township of North Bergen Tax Maps.

The above description is made in accordance with a location survey made by George J. Anderson, L.L.C. NJPLS Lic. No. 36706, dated September 13, 2006.



KENNEDY (HUDSON COUNTY BOULEVARD) BOULEVARD

28<sup>TH</sup> (ANN STREET) STREET

CERTIFIED TO KENNEDY MEDICAL, LLC; DECOTIS, FITZPATRICK, COLE & WISLER, LLP; COMMONWEALTH LAND TITLE INSURANCE COMPANY; LANDAMERICA FINANCIAL GROUP, INC.; CITIBANK, F.S.B., ITS SUCCESSORS AND/OR ASSIGNS.

MAP OF PROPERTY SITUATED AT -  
 2801-2817 KENNEDY BOULEVARD, TWP. OF NORTH BERGEN,  
 HUDSON COUNTY, NEW JERSEY

SURVEY NO. - 2006224      SCALE - 1" = 30'  
 BLOCK 60      LOT(S) 2 & 3      TAX MAPS

**GEORGE J. ANDERSON, L.L.C.**  
 PROFESSIONAL LAND SURVEYORS  
 (RECORDS OF SHEPARD & SHEPARD, INC.)  
 641-B FRANKLIN AVE. - NUTLEY, NEW JERSEY 07110