



THE
POWELL GROUP
The Experts in Real Estate & Business Brokerage

2316 Clovis Road, Lubbock, TX 79415



Retail Building Space for Lease on Clovis Rd



PRESENTED BY: ***LEASE PRICE: \$2,600/mo +NNN***

DAVID POWELL, CCIM

Commercial Broker

Business Broker

(806) 239-0804

lubbockcommercial@gmail.com

KW Commercial | Lubbock

The Powell Group

10210 Quaker Avenue

Lubbock, TX 79424

Property Summary



Property Summary

Address: 2316 Clovis Rd
Lubbock, TX 79415

Year Built: 1958
Remodeled in recent years

Building Size: 6,816 SF
Lot Size: 20,160 SF

Zoning: Light Industrial (LI)

Price/Mo: \$2,600 + NNN
NNN: approx \$1.16/SF

Warehouse Access: 1 dock
1 overhead door

Property Overview

This Light Industrial Retail property for Lease is located on Clovis Road, with ease of access to several major highways, and railways.

With the front facing Showroom space, and an existing Loading Dock to the rear warehouse, this is a prime location for any number of retail, wholesale, or distributing business needs.

There is a 2nd overhead door access, versatile interior space, and additional parking or lot storage area beside warehouse.



THE
POWELL GROUP

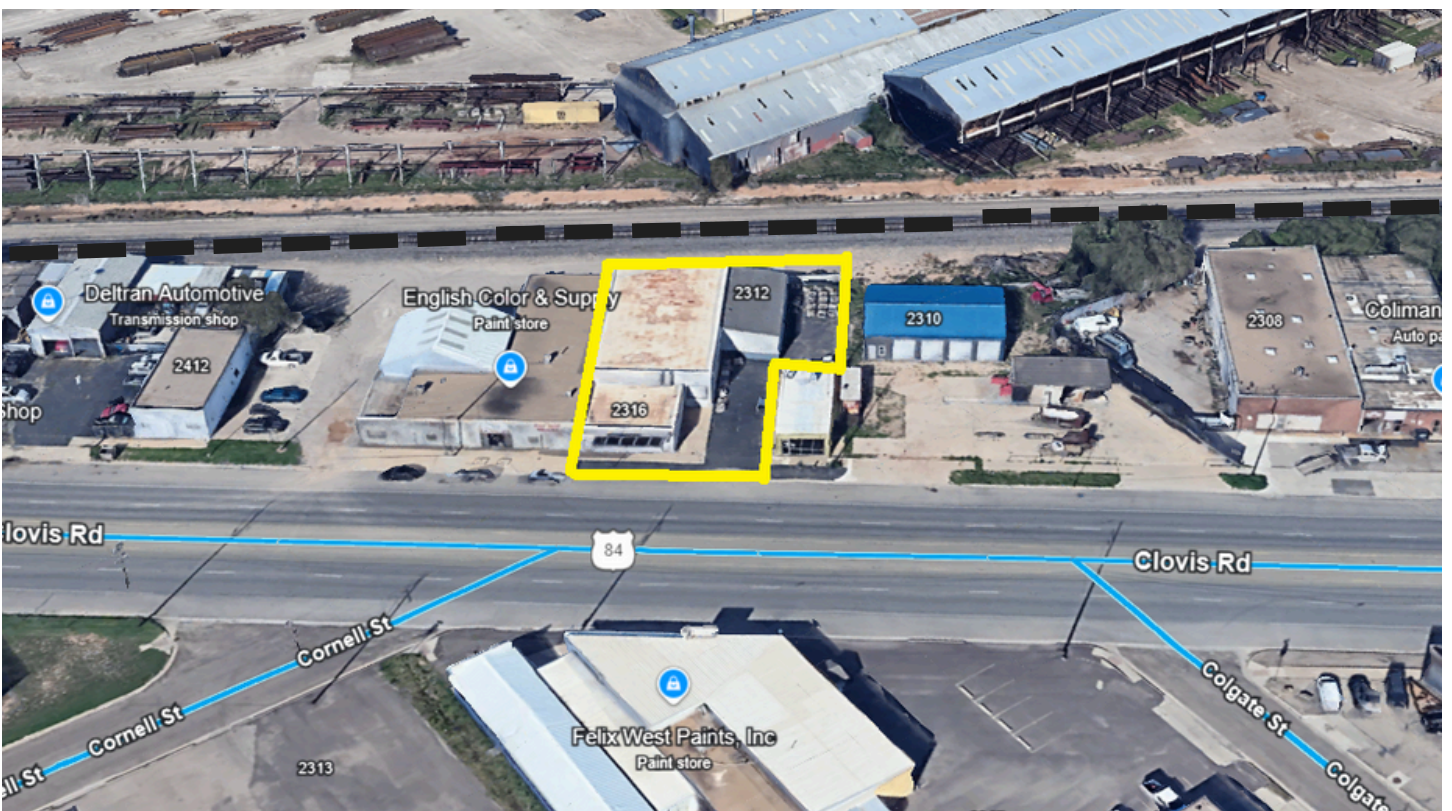
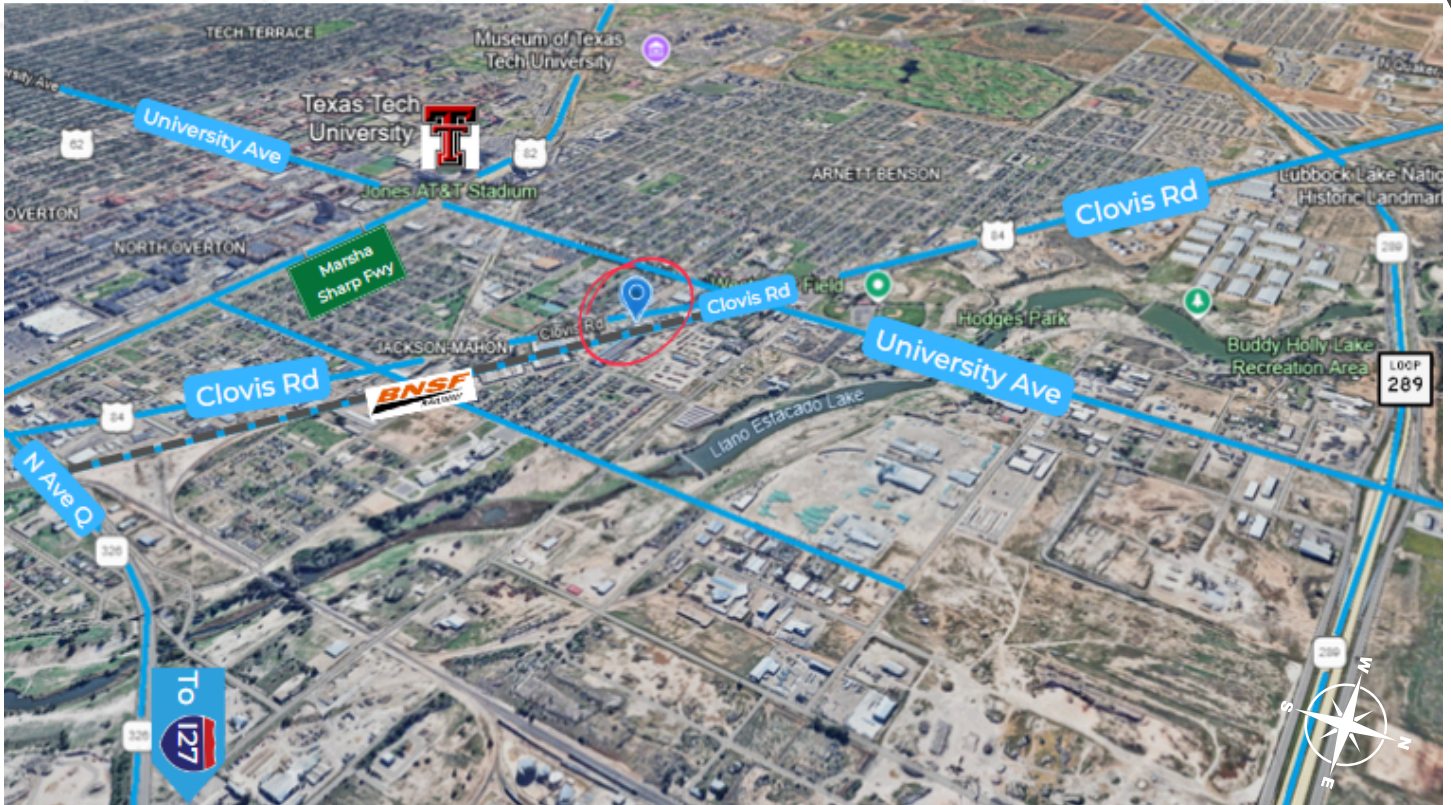
The Experts in Real Estate & Business Brokerage

Photos



2316 Clovis Road, Lubbock, TX 79415

Location Maps



We obtained the information above from sources we believe to be reliable. However, we have not verified its accuracy and make no guarantee, warranty, or representation about it. It is submitted subject to the possibility of errors, omissions, change of price, rental or other conditions, prior sale, lease or financing, or withdrawal without notice. We include projections, opinions, assumptions, or estimates for example only, and they may not represent the current or future performance of the property. You and your tax and legal advisors should conduct your own investigation of the property and transaction.

View more listings at www.lubbockcommercialrealestate.com