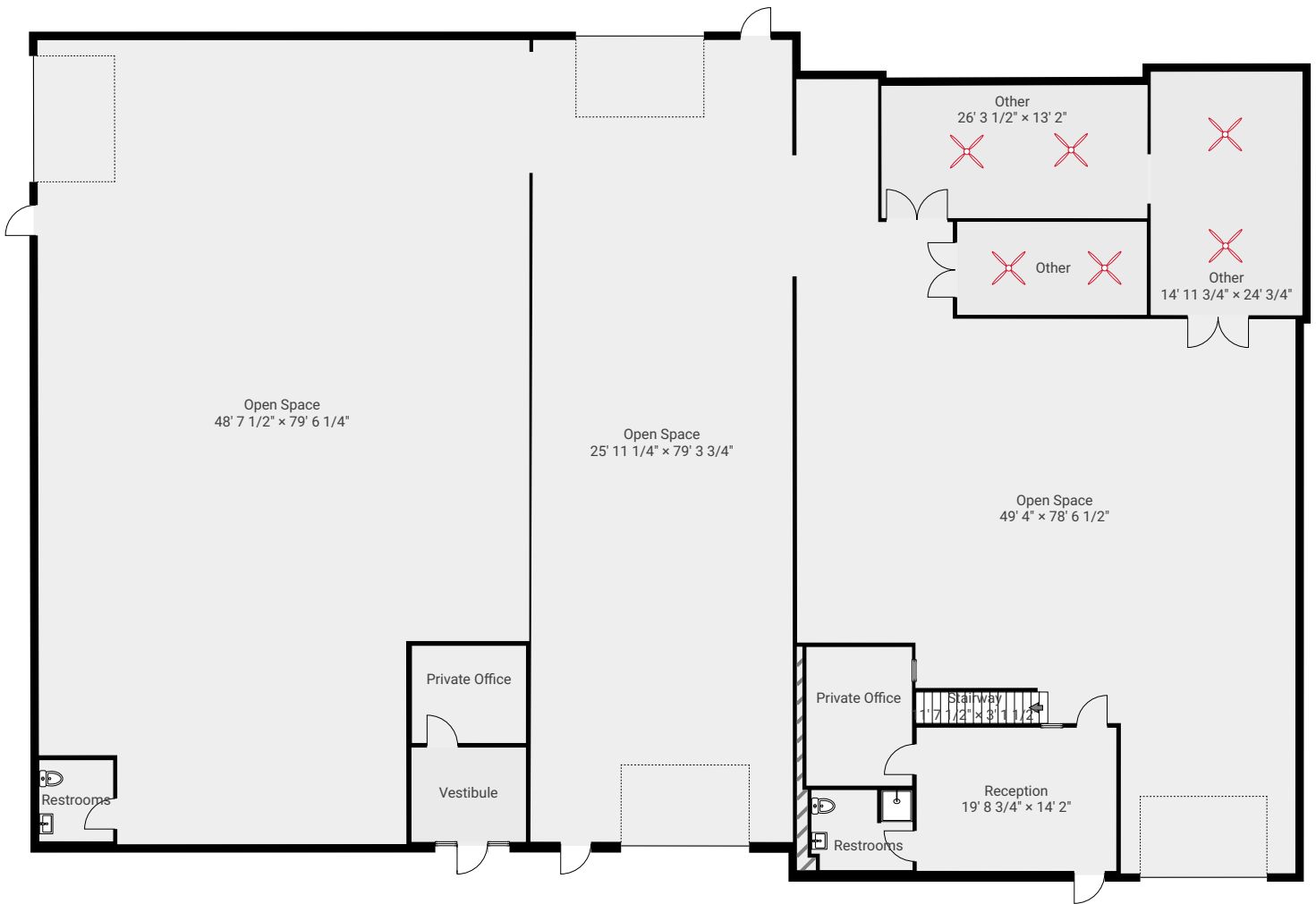


LIVING AREA: 10641.33 sq ft • FLOORS: 2

▼ Ground Floor

LIVING AREA: 10185.18 sq ft

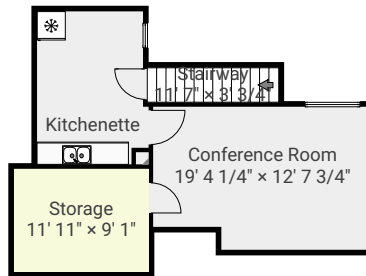
THIS FLOORPLAN IS PROVIDED WITHOUT WARRANTY OF ANY KIND. BROKEN CRAYON PHOTOGRAPHY DISCLAIMS ANY WARRANTY INCLUDING, WITHOUT LIMITATION, SATISFACTORY QUALITY OR ACCURACY OF DIMENSIONS. While we do our best at being accurate we cannot guarantee square footage calculations. While we are providing measurements and a floorplan ultimately the real estate agent is responsible to make sure it's accurate. If you see a discrepancy let us know immediately!



LIVING AREA: 10641.33 sq ft • FLOORS: 2

▼ 2nd Floor

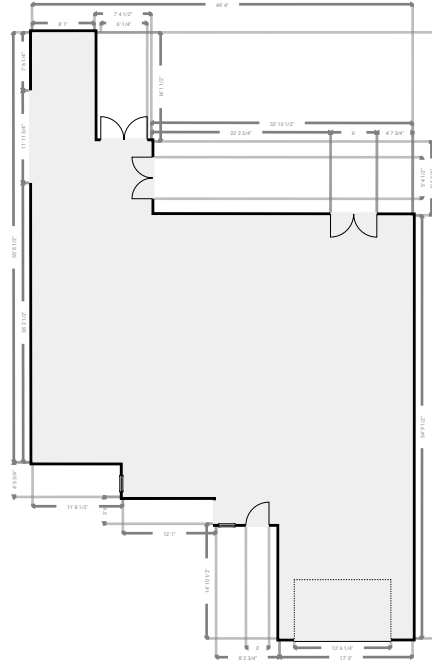
LIVING AREA: 456.15 sq ft



TOTAL AREA: 10744.99 sq ft • LIVING AREA: 10641.33 sq ft • FLOORS: 2

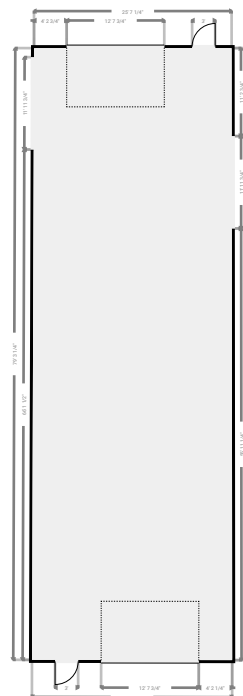
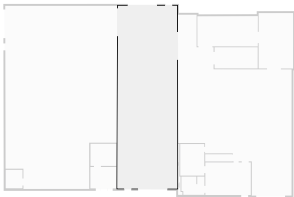
▼ **Open Space**
Ground Floor

WIDTH: 49' 4" • LENGTH: 78' 6 1/2"
AREA: 2352.11 sq ft • PERIMETER: 255' 7 1/4"



▼ **Open Space**
Ground Floor

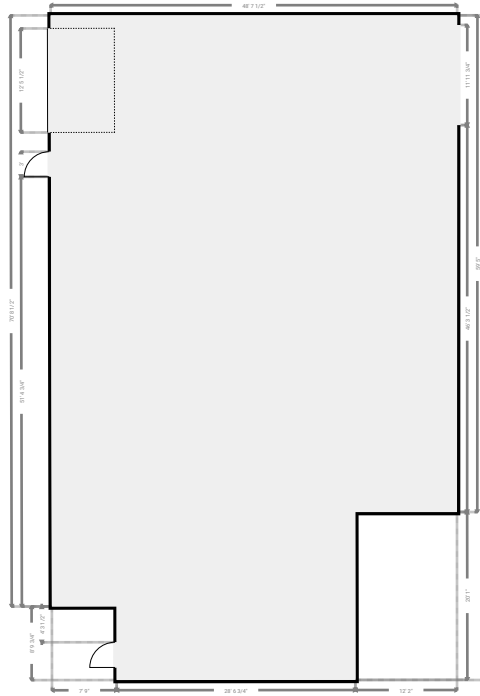
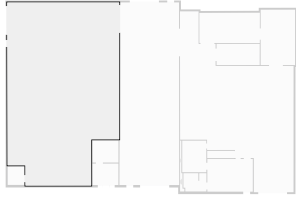
WIDTH: 25' 11 1/4" • LENGTH: 79' 3 3/4"
AREA: 2043.80 sq ft • PERIMETER: 210' 1 3/4"



TOTAL AREA: 10744.99 sq ft • LIVING AREA: 10641.33 sq ft • FLOORS: 2

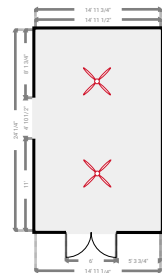
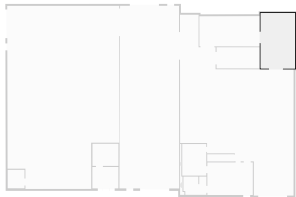
▼ **Open Space**
Ground Floor

WIDTH: 48' 7 1/2" • LENGTH: 79' 6 1/4"
AREA: 3546.14 sq ft • PERIMETER: 256' 1 1/2"



▼ **Other**
Ground Floor

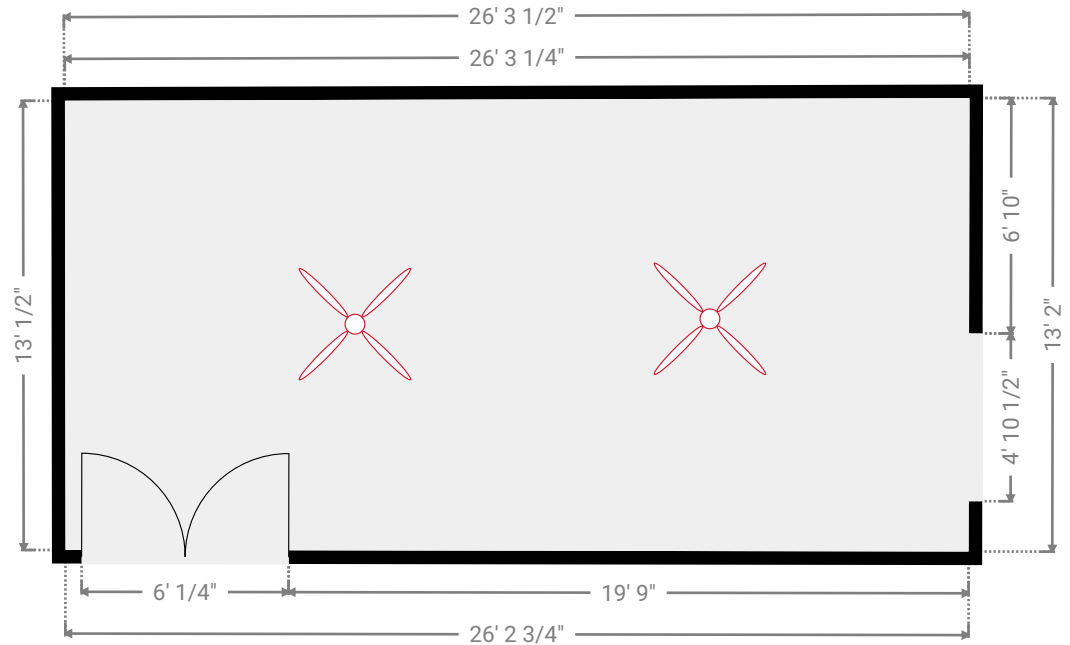
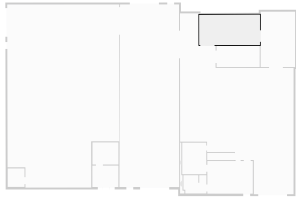
WIDTH: 14' 11 3/4" • LENGTH: 24' 3/4"
AREA: 359.51 sq ft • PERIMETER: 78'



TOTAL AREA: 10744.99 sq ft • LIVING AREA: 10641.33 sq ft • FLOORS: 2

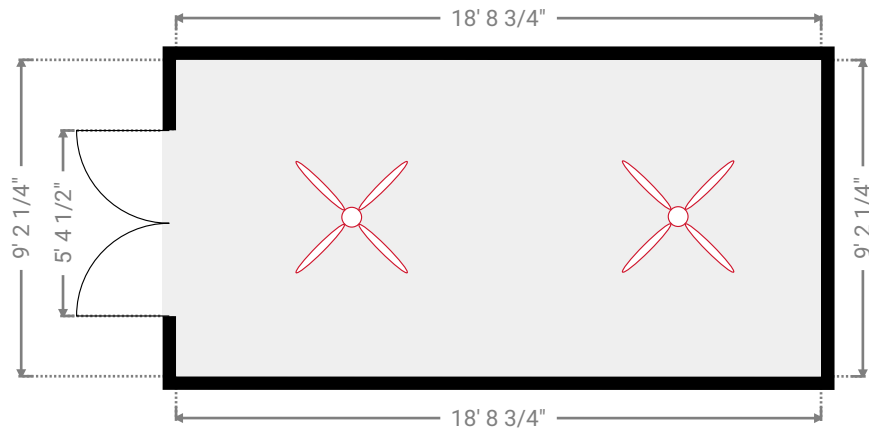
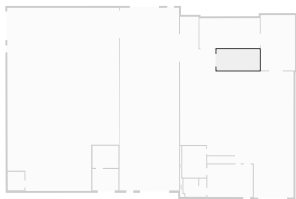
▼ Other
Ground Floor

WIDTH: 26' 3 1/2" • LENGTH: 13' 2"
AREA: 344.05 sq ft • PERIMETER: 78' 8 1/2"



▼ Other
Ground Floor

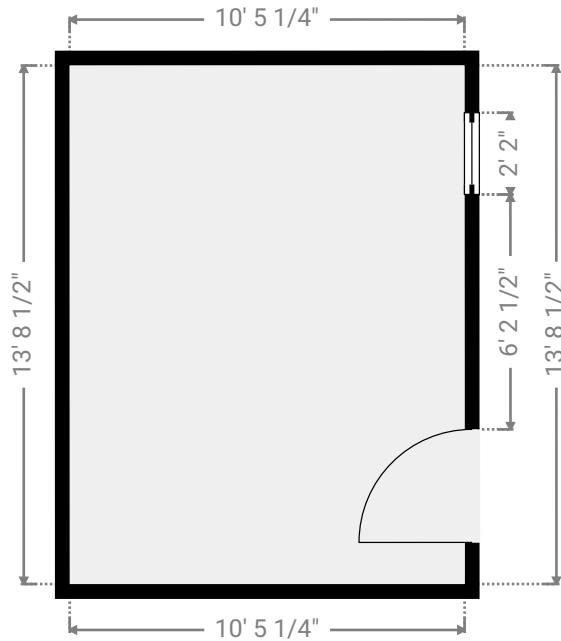
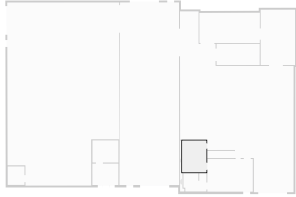
WIDTH: 18' 8 3/4" • LENGTH: 9' 2 1/4"
AREA: 172.06 sq ft • PERIMETER: 55' 10"



TOTAL AREA: 10744.99 sq ft • LIVING AREA: 10641.33 sq ft • FLOORS: 2

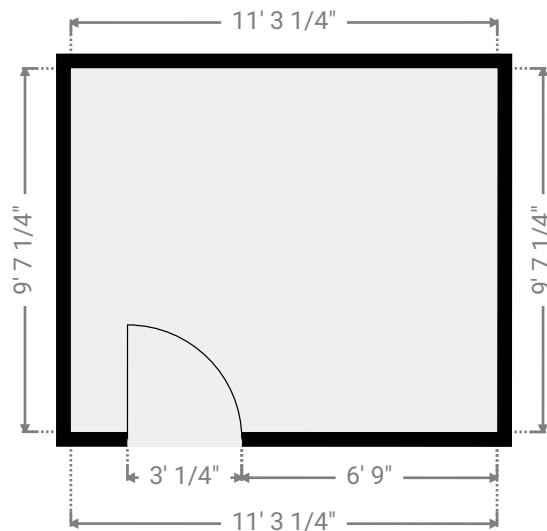
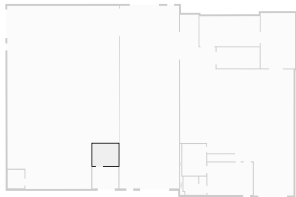
▼ **Private Office**
Ground Floor

WIDTH: 10' 5 1/4" • LENGTH: 13' 8 1/2"
AREA: 143.12 sq ft • PERIMETER: 48' 3 1/2"



▼ **Private Office**
Ground Floor

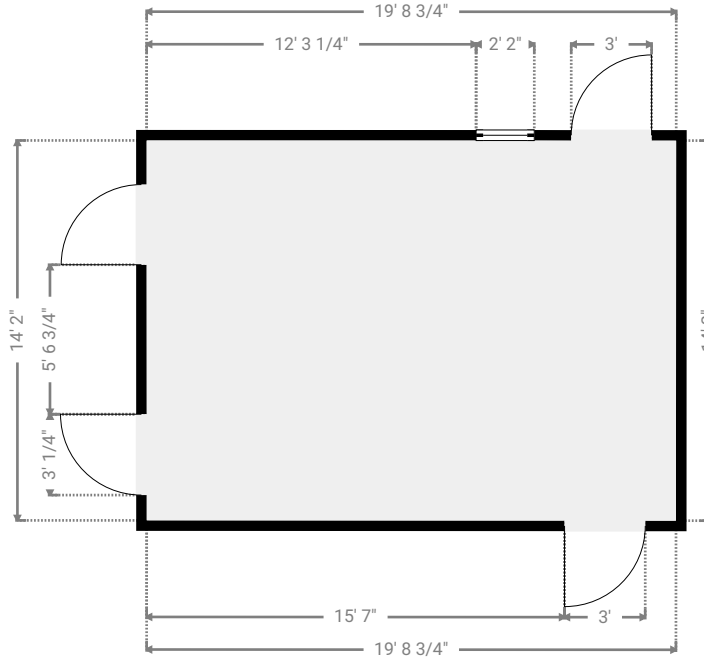
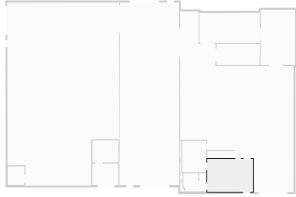
WIDTH: 11' 3 1/4" • LENGTH: 9' 7 1/4"
AREA: 108.28 sq ft • PERIMETER: 41' 9"



TOTAL AREA: 10744.99 sq ft • LIVING AREA: 10641.33 sq ft • FLOORS: 2

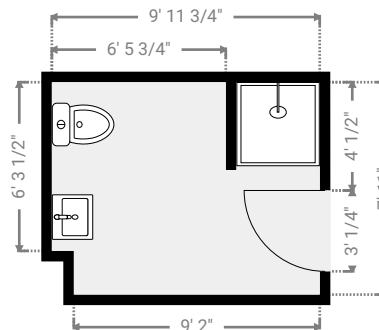
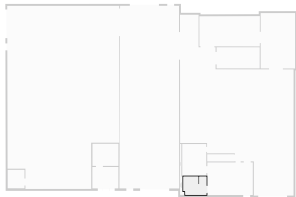
▼ **Reception**
Ground Floor

WIDTH: 19' 8 3/4" • LENGTH: 14' 2"
AREA: 279.51 sq ft • PERIMETER: 67' 9 1/2"



▼ **Restrooms**
Ground Floor

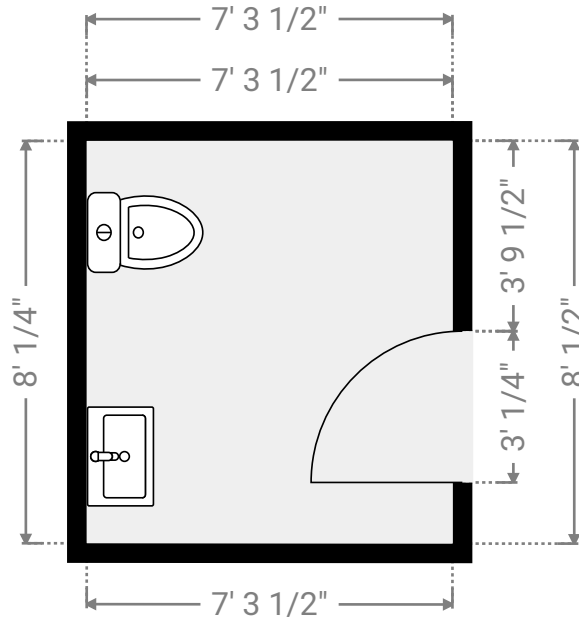
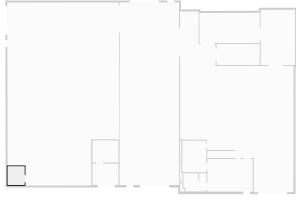
WIDTH: 9' 11 3/4" • LENGTH: 7' 11"
AREA: 76.41 sq ft • PERIMETER: 42' 4 1/4"



TOTAL AREA: 10744.99 sq ft • LIVING AREA: 10641.33 sq ft • FLOORS: 2

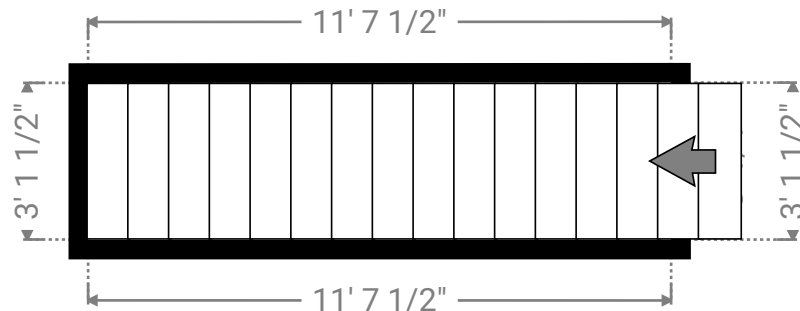
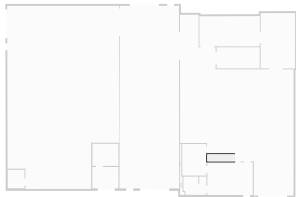
▼ Restrooms
Ground Floor

WIDTH: 7' 3 1/2" • LENGTH: 8' 1/2"
AREA: 58.53 sq ft • PERIMETER: 30' 7 3/4"



▼ Stairway
Ground Floor

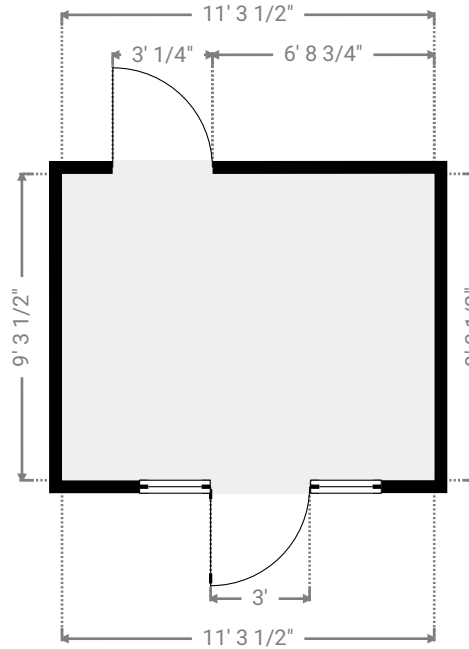
WIDTH: 11' 7 1/2" • LENGTH: 3' 1 1/2"
AREA: 36.33 sq ft • PERIMETER: 29' 6"



TOTAL AREA: 10744.99 sq ft • LIVING AREA: 10641.33 sq ft • FLOORS: 2

▼ **Vestibule**
Ground Floor

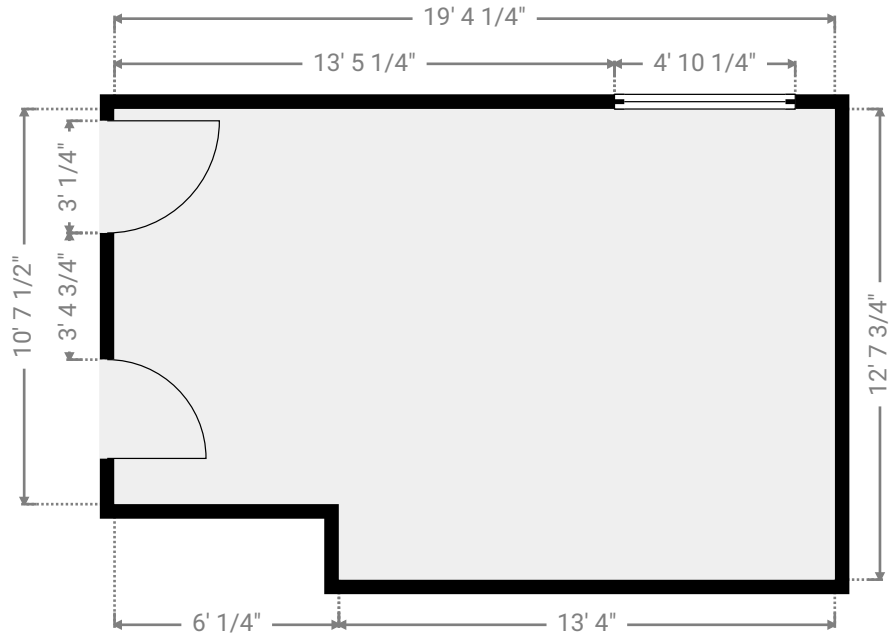
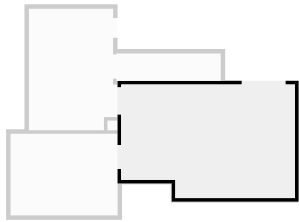
WIDTH: 11' 3 1/2" • LENGTH: 9' 3 1/2"
AREA: 104.96 sq ft • PERIMETER: 41' 2"



TOTAL AREA: 10744.99 sq ft • LIVING AREA: 10641.33 sq ft • FLOORS: 2

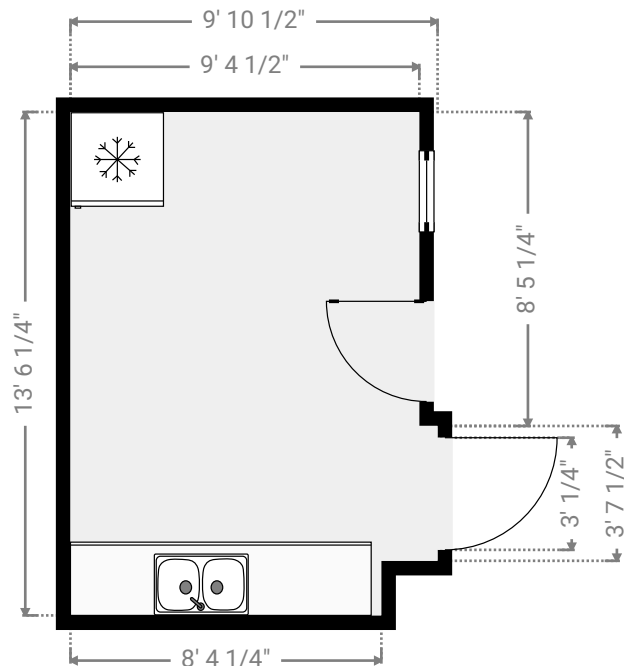
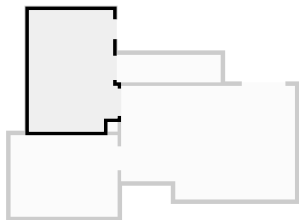
▼ **Conference Room**
2nd Floor

WIDTH: 19' 4 1/4" • LENGTH: 12' 7 3/4"
AREA: 232.53 sq ft • PERIMETER: 64'



▼ **Kitchenette**
2nd Floor

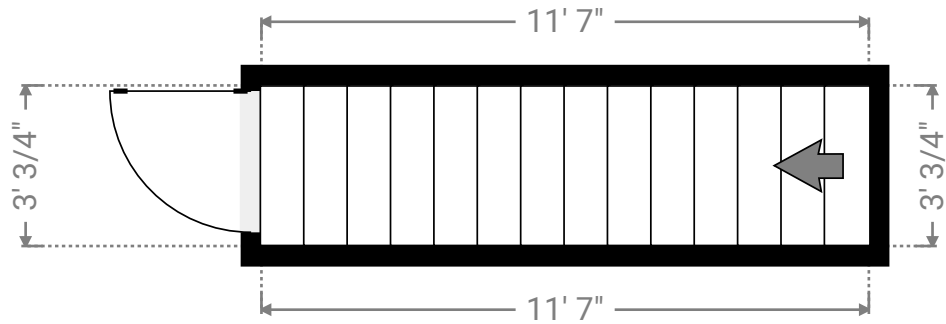
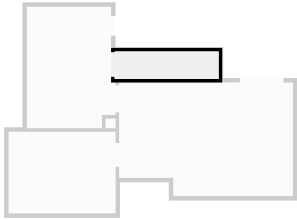
WIDTH: 9' 10 1/2" • LENGTH: 13' 6 1/4"
AREA: 127.10 sq ft • PERIMETER: 46' 9 1/2"



TOTAL AREA: 10744.99 sq ft • LIVING AREA: 10641.33 sq ft • FLOORS: 2

▼ **Stairway**
2nd Floor

WIDTH: 11' 7" • LENGTH: 3' 3/4"
AREA: 35.47 sq ft • PERIMETER: 29' 3 1/2"



▼ **Storage**
2nd Floor

WIDTH: 11' 11" • LENGTH: 9' 1"
AREA: 108.24 sq ft • PERIMETER: 42'

