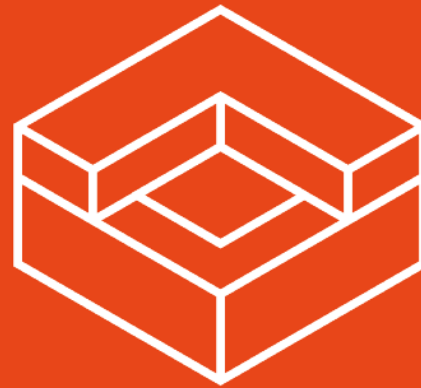


207 S 3RD ST
Williamsburg, BK

FOR LEASE



COUNTER

REAL ESTATE

207 S 3RD ST
Williamsburg, BK

JUSTIN LOSH
(347) 388 4649
JUSTIN@COUNTRYNY.COM

OFFICE
96 Knickerbocker Ave, # 110
BROOKLYN, NY, 11237



PROPERTY DETAILS

 **Rent Negotiable**

 **500 SF to 8600 SF**

 **LONG LEASE AVAILABLE**

DIVISIBLE

150' OF FRONTAGE

HAS MEZZANINE

CORNER AVAILABLE

18' CEILING

ALL USES CONSIDERED

IMMEDIATE OCCUPANCY

TI AVAILABLE

POPULAR COLIVING BRAND LEASED
ALL APARTMENTS

207 S 3RD ST
Williamsburg, BK



JUSTIN LOSH

(347) 388 4649

JUSTIN@COUNTRYNY.COM



OFFICE

96 Knickerbocker Ave, # 110

BROOKLYN, NY, 11237



SOUTH WILLIAMSBURG

Sprinklers Installed

South And West Exposures
Gives Great Light

Attractive Terms Available

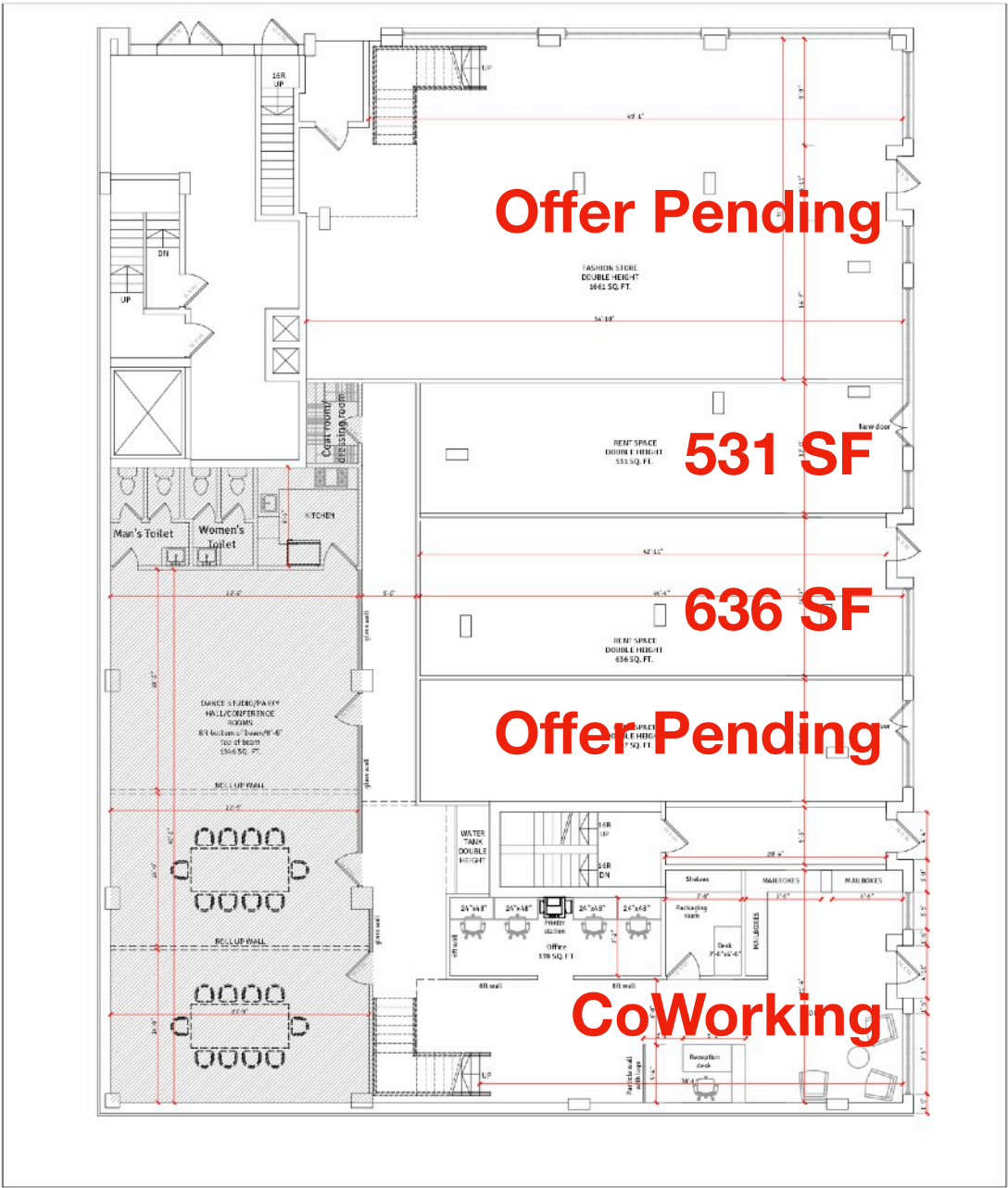
Ada Bathrooms Installed



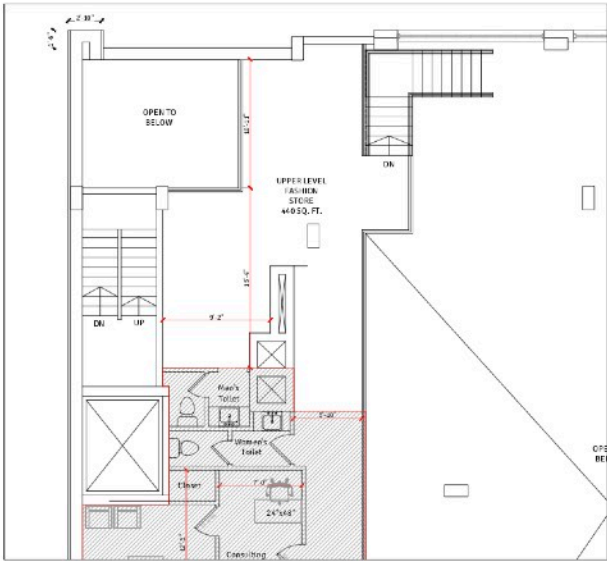
207 S 3RD ST
Williamsburg, BK

JUSTIN LOSH
(347) 388 4649
JUSTIN@COUNTRYNY.COM

OFFICE
96 Knickerbocker Ave, # 110
BROOKLYN, NY, 11237



First Level



Mezzanine

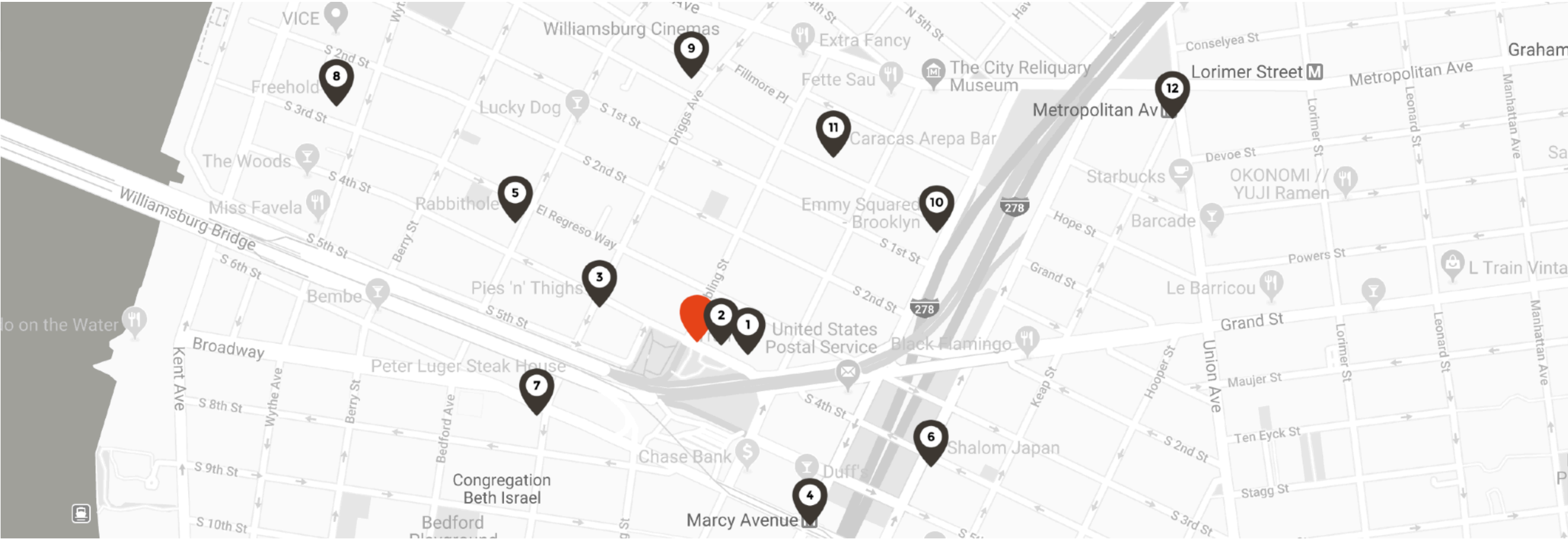
POTENTIAL DIVISIONS

Only 1,167 Sf Without Offers
Can Be Divided As Shown.

207 S 3RD ST
Williamsburg, BK

JUSTIN LOSH
(347) 388 4649
JUSTIN@COUNTERNY.COM

OFFICE
96 Knickerbocker Ave, # 110
BROOKLYN, NY, 11237



NEIGHBORS

- 1 - TRAI F

2- XIXSA

3- PIES N THIGHS

4- MARCY AVE JMZ

5- RABBITHOLE

6- SHALOM JAPAN
- 7- PETER LUGER

8- FREEHOLD

9- WILLIAMSBURG CINEMA

10- EMMY SQUARED

11 -CARACAS AREPA BAR

12- METROPOLITAN G AND L TRAINS

DEMOGRAPHICS (1 MILE / 3 MILES)

POPULATION -

AVERAGE AGE -

AVERAGE HH INCOME -

166,722 / 1,427,122

32.7 / 37

\$92,737 / \$113,760

TRANSPORT

METROPOLITAN AVE / LORIMER AVE -	L/G TRAIN
AVERAGE DAILY RIDERS WEEKDAY	14,299
AVERAGE DAILY RIDERS WEEKEND	21,801
MARCY AVE -	J Train
AVERAGE DAILY RIDERS WEEKDAY	13,315
AVERAGE DAILY RIDERS WEEKEND	14,365