

10273 Iron Rock Way

Elk Grove, Sacramento County

Standalone ±10,000 SF Warehouse Including ±1,973 SF Office



Contact Us

Zac Sweet, SIOR
Senior Vice President
C: 916 717 4768
zac.sweet@cbre.com
Lic. 01352800

Tyler Howell
Senior Associate
T: 916 781 4835
tyler.howell1@cbre.com
Lic. 02100245

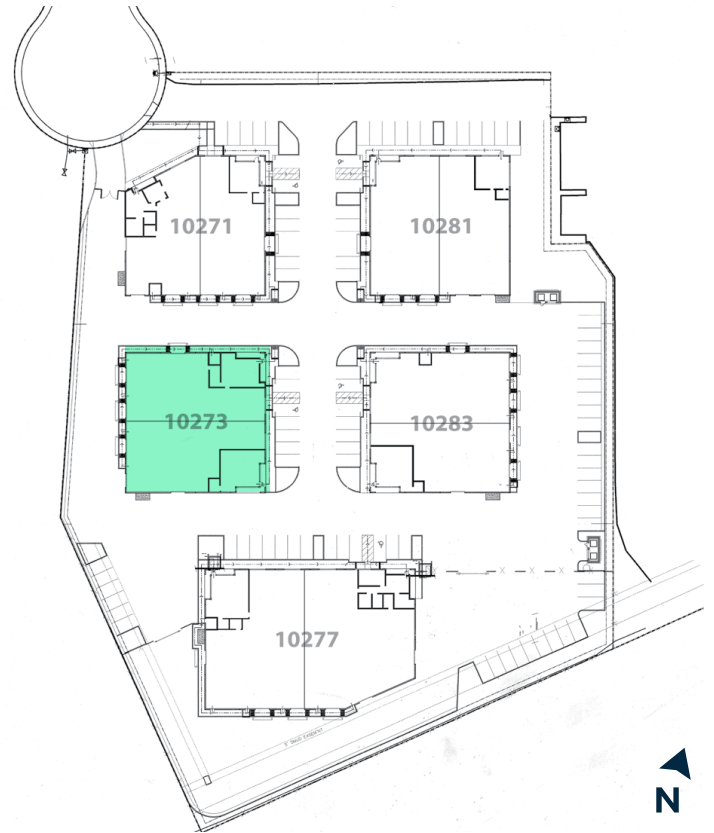
Courtney Lee
Associate
C: 916 906 5544
courtney.lee@cbre.com
Lic. 02031694

Frank Ramos
Asset Manager, Buzz Oates
P: +1 916 379 3893
frankramos@buzzoates.com
Lic. 02243325

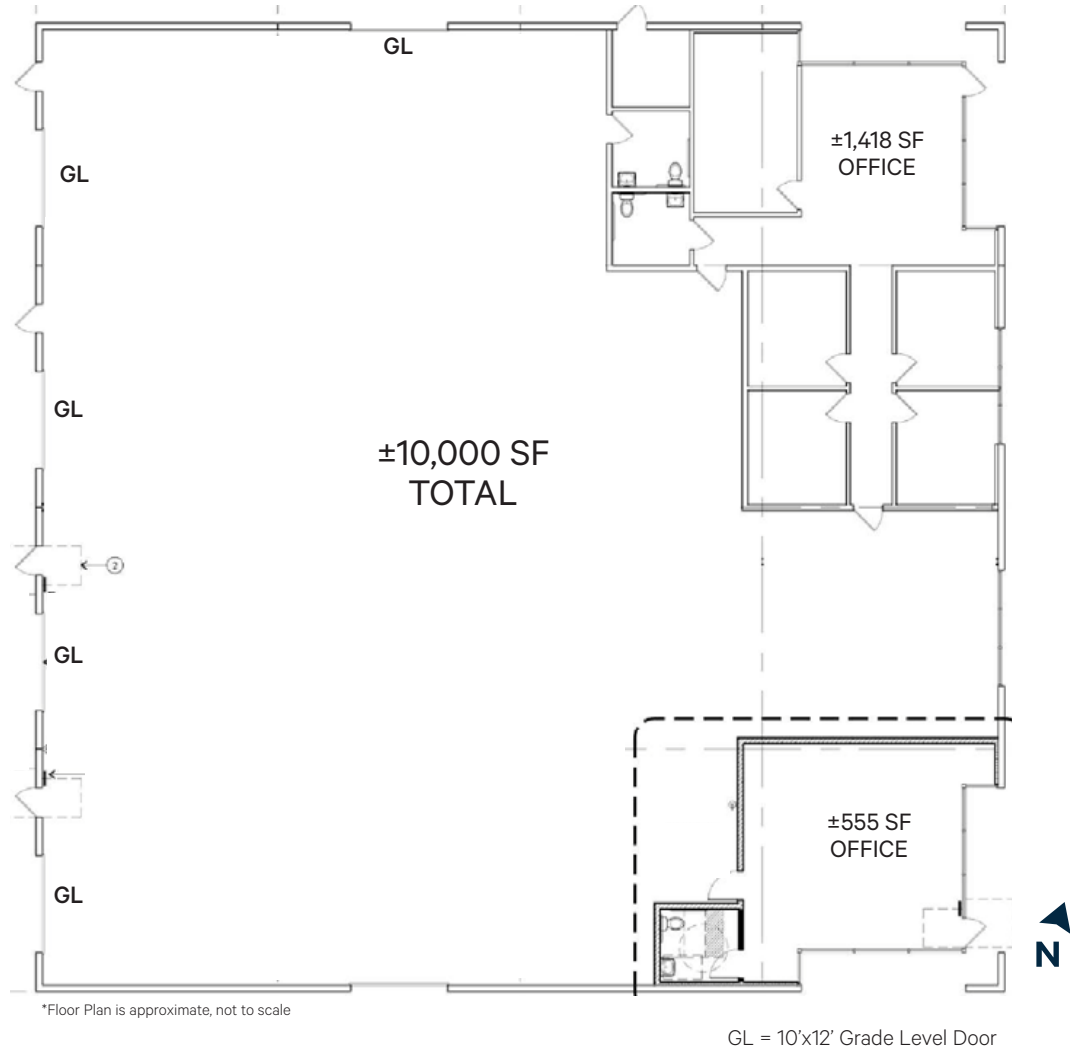
Property Information

- + Building Area: ±10,000 SF
- + Office Area: ±1,973 SF
- + Clear Height: 18'-21'
- + Grade Level Doors: 5 – 10'X12'
- + Electrical: 800 Amps – 277/480v, 3 Phase*
- + Fire Sprinklers: Existing
- + Construction: Reinforced Concrete
- + Year Built: 2007
- + Zoning: HI Heavy Industrial

*tenant to independently verify prior to entering binding agreement



Floor Plan



www.cbre.com/roseville

