

380 Garfield St S – Cambridge, MN



- 20,556 Total SF Building
- Isanti County
- Zoned B2 – Highway Business District
- Built in 1979 (Remodeled 2015)
- 92 Parking Spaces
- 2024 CAM & Taxes: \$3.16
- Lease Rate: \$10-14psf NNN

Suites Available

Suite #	SF
Suite 330	2476

Contact:

Matt Anderson
COMMERCIAL BROKER

612.327.2977 direct 763.689.0349 office 763.552.5754 fax

Matt@ricproperty.com

Local Retail



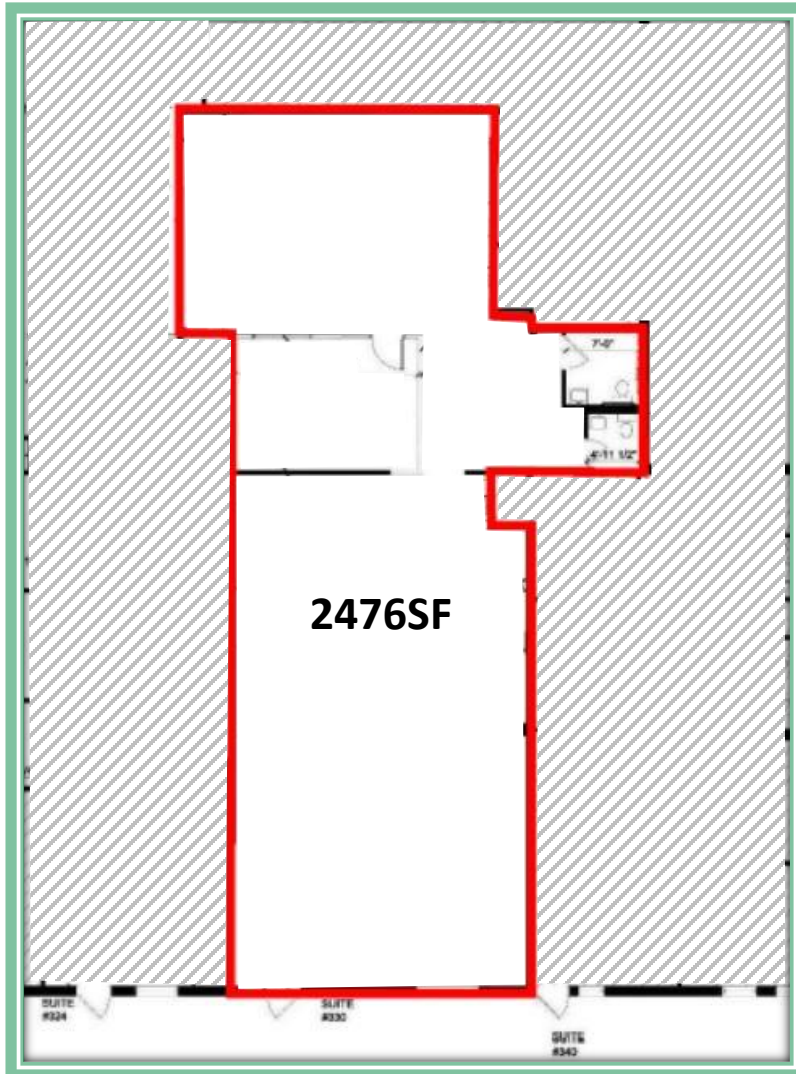
Contact:

Matt Anderson
COMMERCIAL BROKER

612.327.2977 direct 763.689.0349 office 763.552.5754 fax

Matt@ricproperty.com

SUITE # 330 FLOOR PLAN



Contact:

Matt Anderson
COMMERCIAL BROKER

612.327.2977 direct 763.689.0349 office 763.552.5754 fax

Matt@ricproperty.com

**INTERIOR
PHOTOS**



Contact:

Matt Anderson
COMMERCIAL BROKER

612.327.2977 direct 763.689.0349 office 763.552.5754 fax

Matt@ricproperty.com



<u>DEMOGRAPHICS</u>	1 MILE	5 MILES	10 MILES
POPULATION	8209	14,246	31,576
MEDIAN HH INCOME	\$51,812	\$59,230	\$61,146
AVERAGE HH INCOME	\$55,001	\$72,890	\$71,935

PULLING FROM SEVERAL SURROUNDING COMMUNITIES CAMBRIDGE HAS 22,300 CPD TRAVELING INTO ITS RETAIL HUB.

TRAFFIC COUNTS CITY OF CAMBRIDGE

HWY 65 AT HWY 95	22,700 CARS PER DAY
HWY 65 AT MAIN ST	18,900 CARS PER DAY
HWY 95 AT OPPORTUNITY BLVD.	22,300 CARS PER DAY
HWY 95 AT MAIN ST	14,200 CARS PER DAY
HWY 95 AT SPIRIT RIVER DR.	11,500 CARS PER DAY

Contact:

Matt Anderson

COMMERCIAL BROKER

612.327.2977 direct 763.689.0349 office 763.552.5754 fax

Matt@ricproperty.com