






# 101 @ Trimble Office Park

SANTA CLARA, CA

1,601-6,445 SF Available



## MULTIPLE MARKET READY SUITES AVAILABLE

Address	Suite	Size
3100 De La Cruz Blvd	 120	6,445 SF
	206	2,459 SF
	208	4,466 SF
3130 De La Cruz Blvd	 211	1,713 SF
3140 De La Cruz Blvd	110	1,929 SF
3150 De La Cruz Blvd	106	1,706 SF
3160 De La Cruz Blvd	101	2,974 SF
3170 De La Cruz Blvd - H2	119	1,625 SF
3180 De La Cruz Blvd	 130	5,806 SF
	 210	3,363 SF
	 280	4,166 SF

DION CAMPISI, sior  
+1 408 242 6187  
dion.campisi@colliers.com  
CA License No. 01321946



# Building Project Features

## Highlights

- ±190,000 SF
- 10 building office/retail project
- Internet Service Providers include Comcast, AT&T, and WiLine
- AT&T has fiber to all buildings
- Exterior signage available
- Exterior and interior improvements underway
- 3/1,000 free parking

## Location

- Desirable Santa Clara location
- Levi's Stadium: 4 miles
- Freeway exposure
- Immediate access to Highway 101
- Close access to Highways 87, 237, 880 and 280
- San Jose International Airport: 3 miles
- Santa Clara Caltrain Station: 3 miles

## Amenities

- Free conference facilities
- Showers located on the 2nd floor of the 3100 building
- Eastern Barbecue and Lily Sandwiches & Coffee on-site
- On-site dry cleaners
- On-site property management
- FedEx and UPS drop boxes
- Rivermark Village: 1 mile
- Bay Club: 3 miles
- Mercado Santa Clara: 3 miles



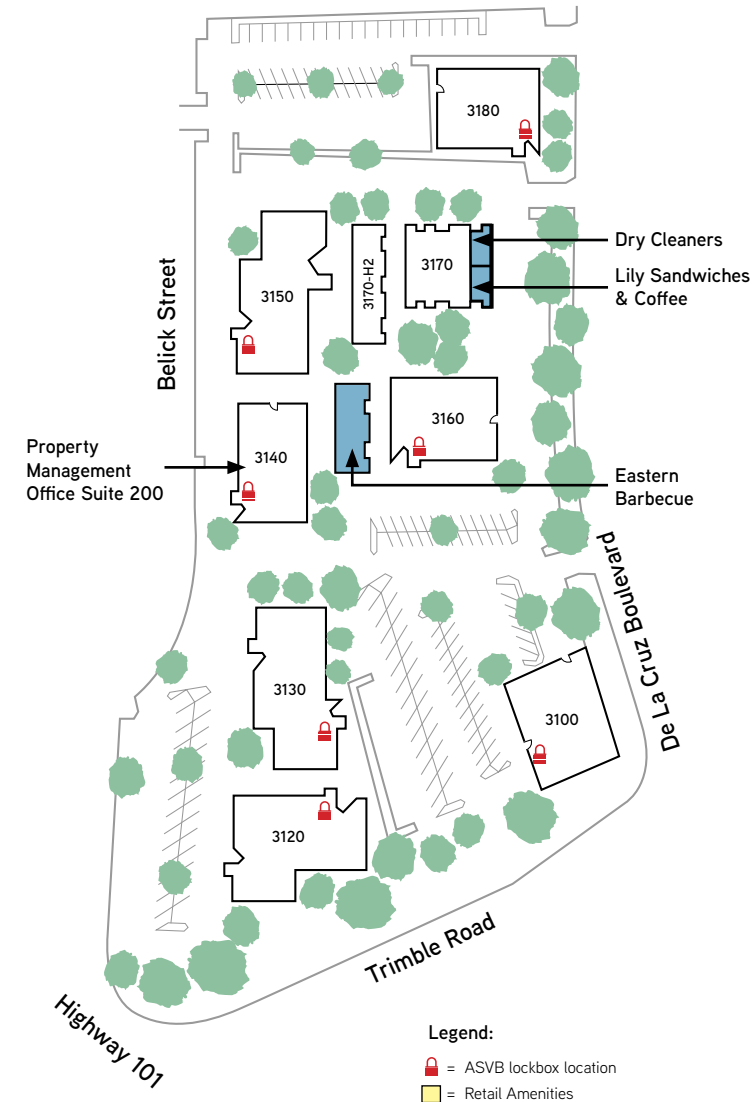
DION CAMPISI, SIOR  
+1 408 242 6187  
dion.campisi@colliers.com  
CA License No. 01321946

101 @ Trimble Office Park  
SANTA CLARA, CA



# Available Space Summary

Address	Suite	Size	Comments	Date Available	Virtual Tour
3100 De La Cruz Blvd	120	6,445 SF	<b>Market Ready Suite!</b> 10 private offices, 1 conference room, storage room, IT room, testing room and open office. Plug & Play with furniture	Now	 VIRTUAL TOUR
	206	2,459	3 private offices and 1 conference room Plug & Play	Now	
	208	4,466	5 private offices, 1 conference room, kitchen/break area, server room, storage room and open office space.	Now	
3130 De La Cruz Blvd	211	1,713 SF	Open office area	Now	 VIRTUAL TOUR
3140 De La Cruz Blvd	110	1,929	1 private office, 1 breakroom, 1 lab with VCT flooring, reception area and open office	Now	
3150 De La Cruz Blvd	106	1,706 SF	2 private offices, break area and open area	Now	
3160 De La Cruz Blvd	101	2,974 SF	5 private offices and open office	Now	
3170 De La Cruz Blvd - H2	119	1,625 SF	<b>Market Ready Suite!</b> 2 private offices, kitchen, storage room, private restroom and open office space	Now	
3180 De La Cruz Blvd	130	5,806 SF	4 private offices, 1 large conference room, 1 breakroom, 1 IT room, 1 storage room, 3 labs with VCT flooring, reception area and open office.	Now	 VIRTUAL TOUR
	210	3,363 SF	6 private offices, 2 conference rooms, lab and break area	Now	 VIRTUAL TOUR
	280	4,166 SF	2 conference rooms, lab and break area Market Ready suite		 VIRTUAL TOUR

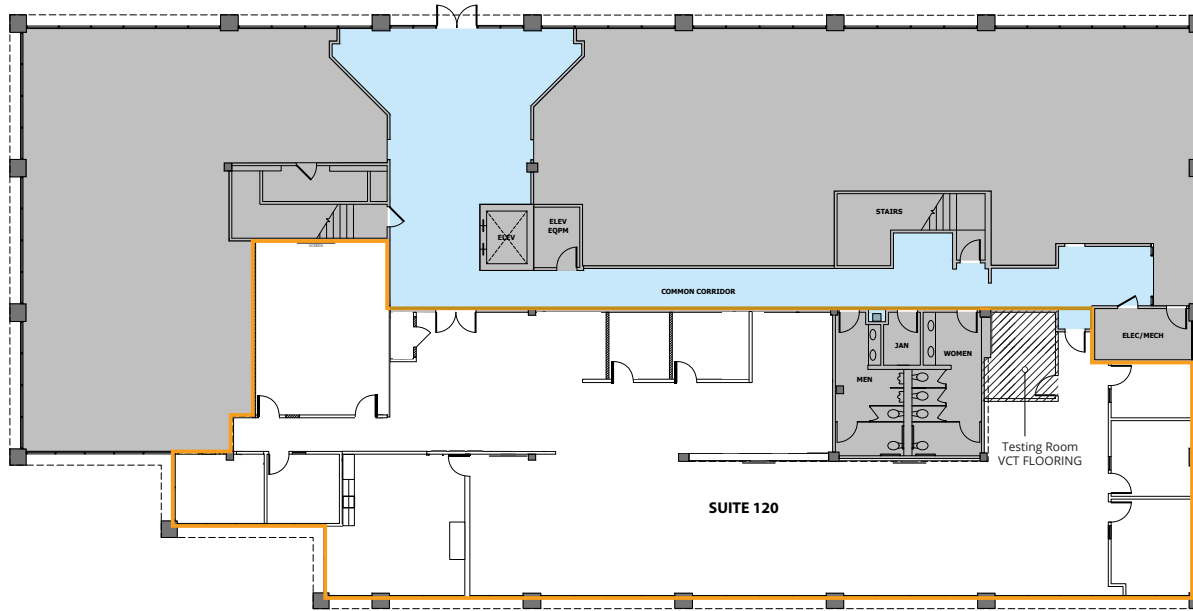


**101 @ Trimble Office Park**  
SANTA CLARA, CA





# 3100 De La Cruz Boulevard



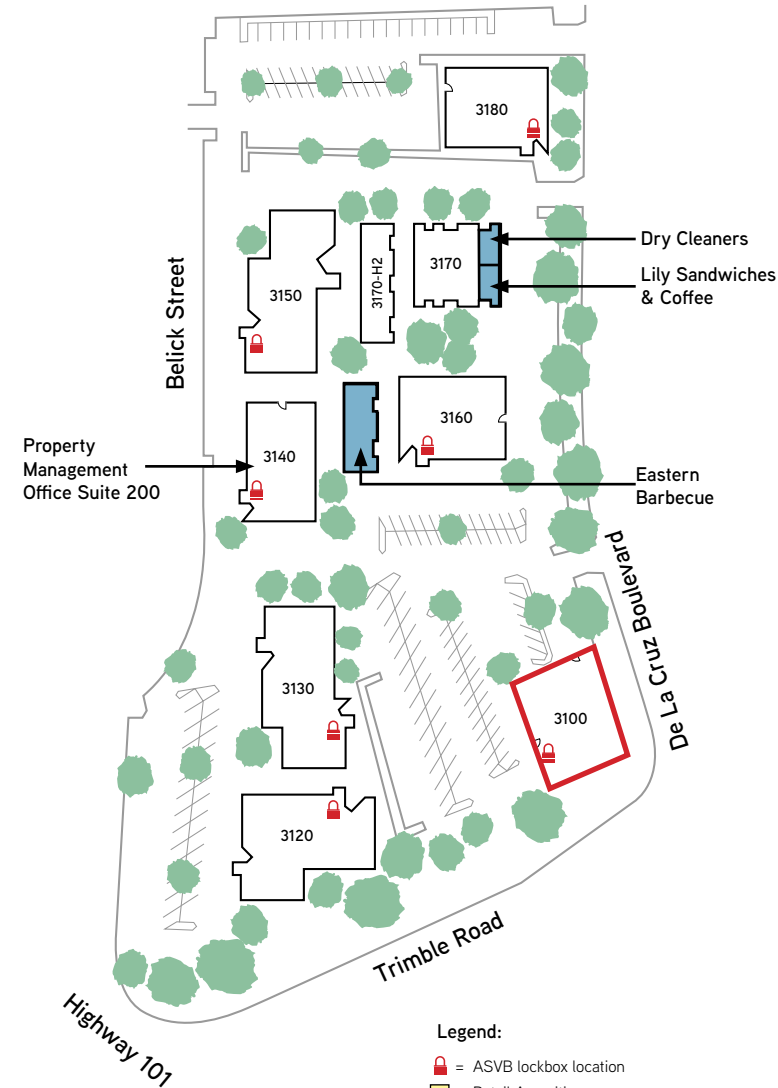
= 6,445 SF (Suite 120)

**3100 De La Cruz Blvd**  
**Suite 120**  
 6,445 SF

Testing room approx. 120 sq ft.  
 No dedicated AC in the server room.  
 Office area: two 5-ton split systems.



= Common Area     = Leased

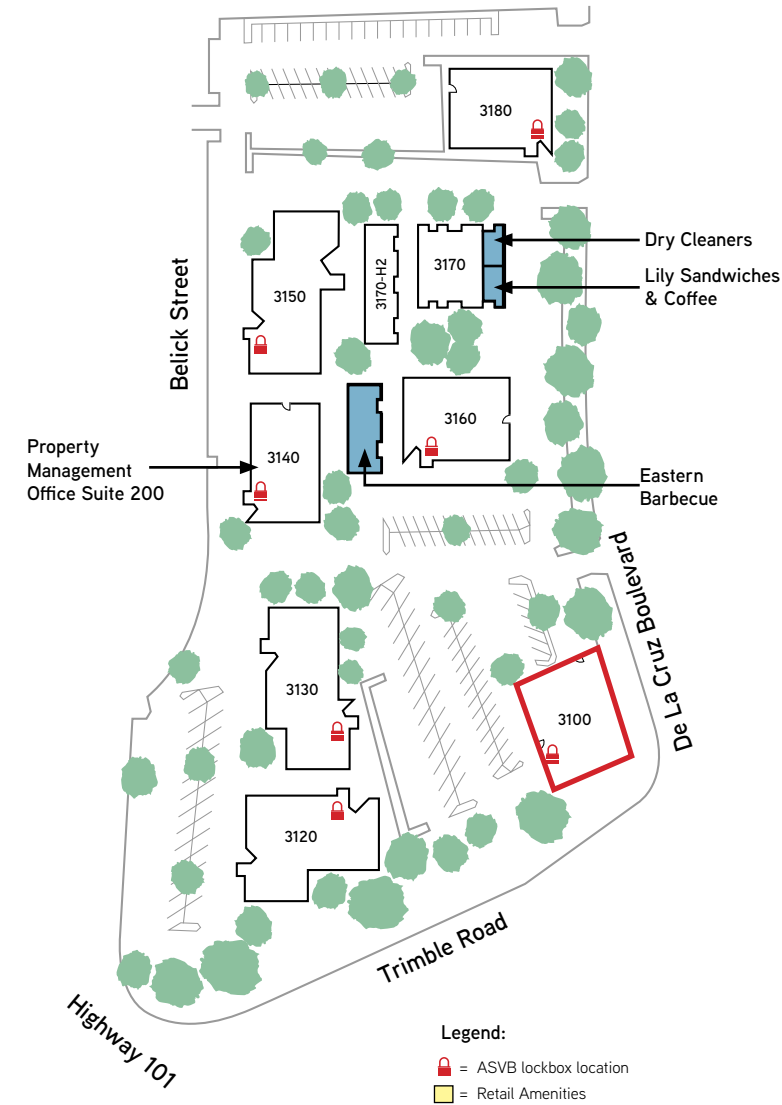
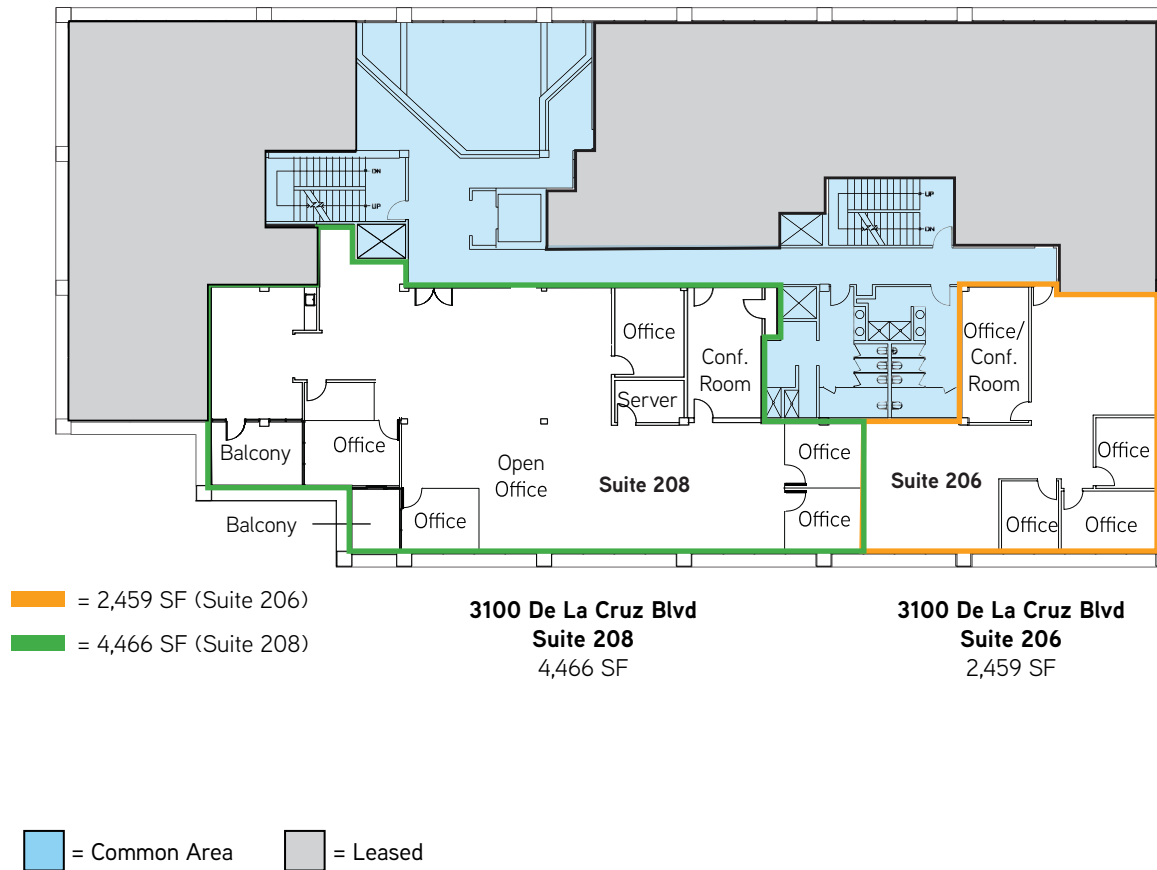


DION CAMPISI, SIOR  
 +1 408 242 6187  
 dion.campisi@colliers.com  
 CA License No. 01321946

**101 @ Trimble Office Park**  
 SANTA CLARA, CA



# 3100 De La Cruz Boulevard



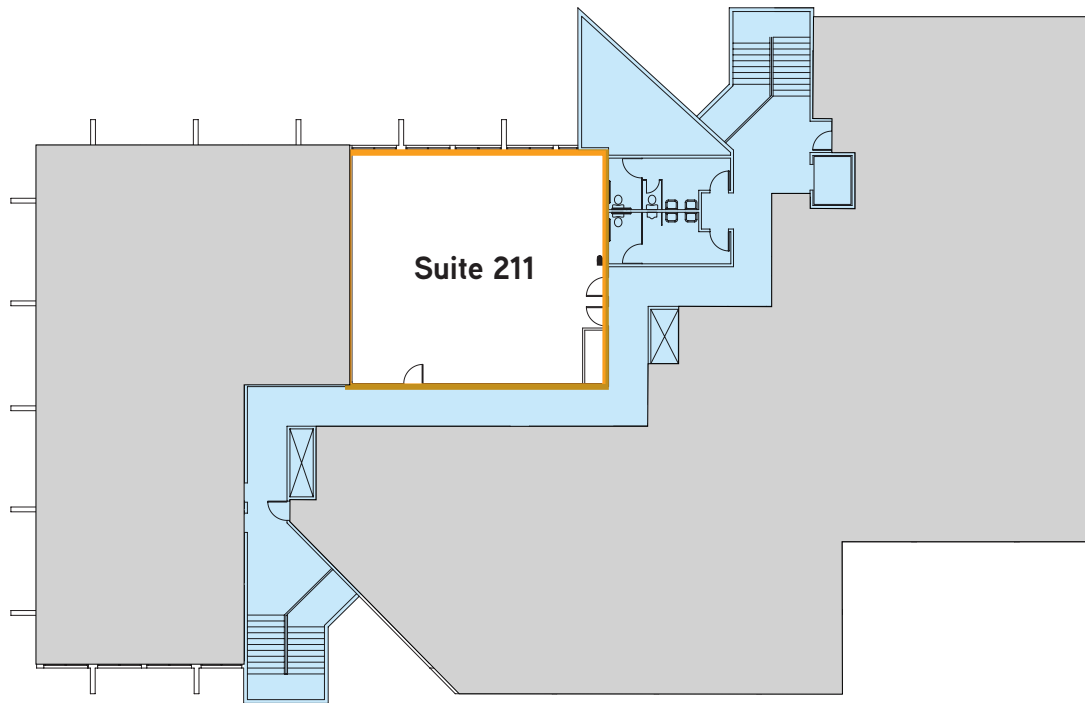
DION CAMPISI, SIOR  
 +1 408 242 6187  
 dion.campisi@colliers.com  
 CA License No. 01321946

**101 @ Trimble Office Park**  
 SANTA CLARA, CA



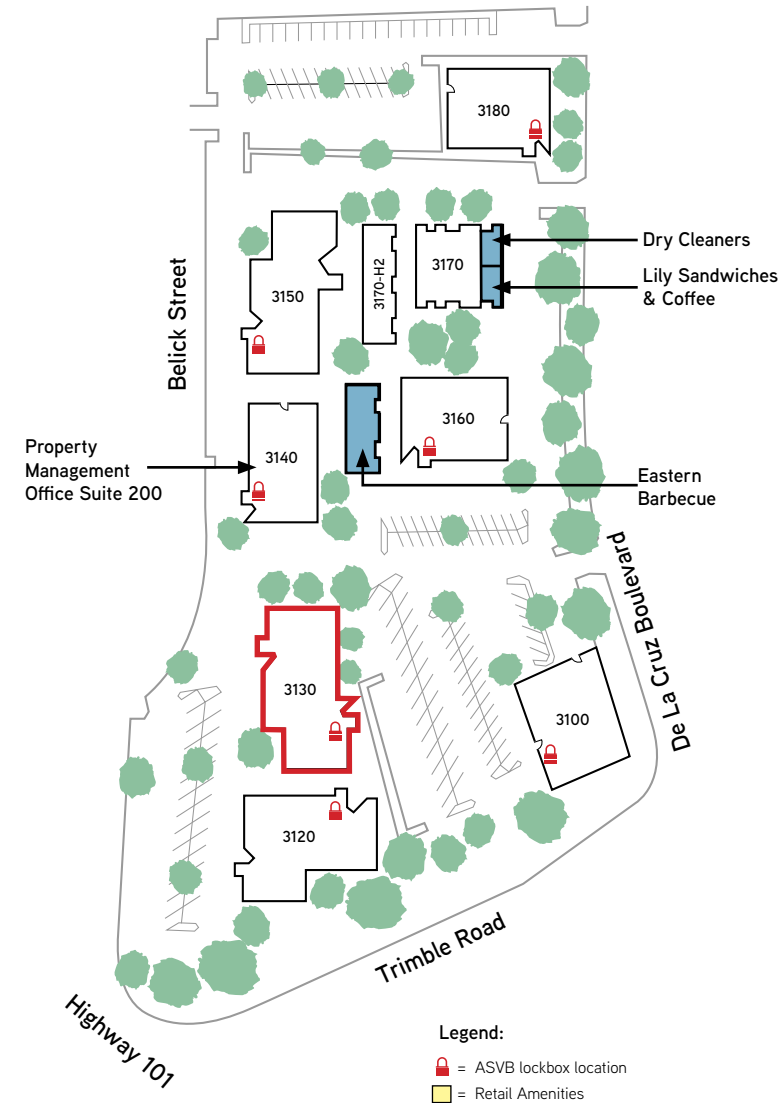
# 3130 De La Cruz Boulevard

3130 De La Cruz Blvd  
Suite 211  
1,713 SF



Orange outline = 1,713 SF (Suite 211)

Light blue = Common Area    Grey = Leased

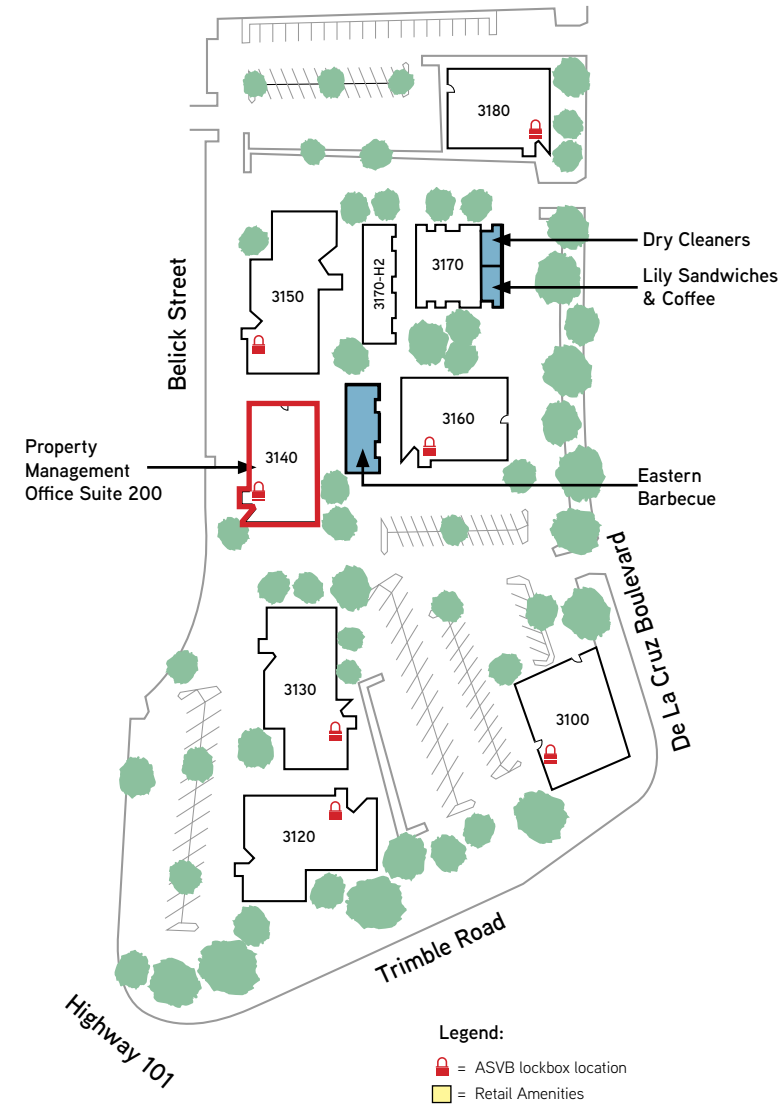
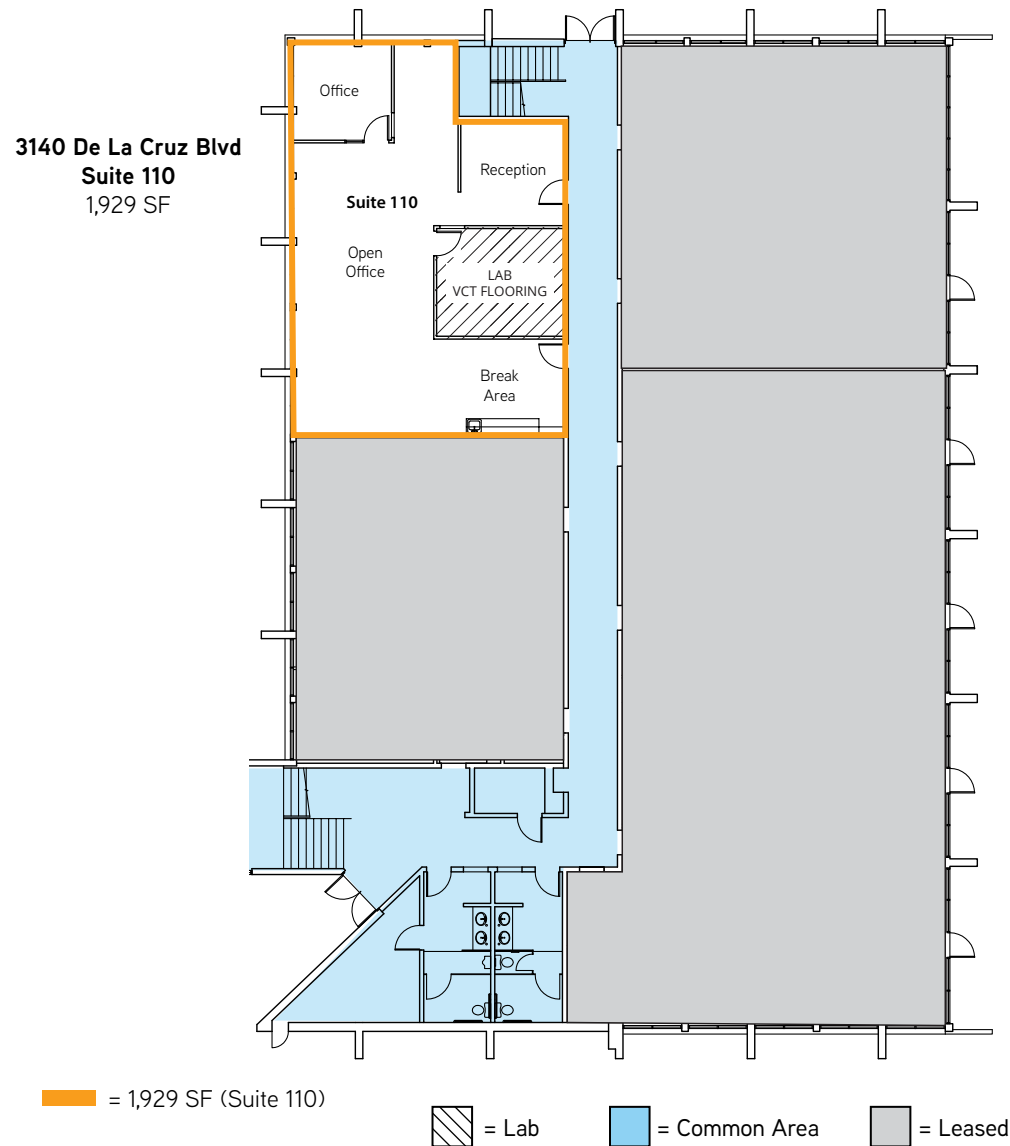


DION CAMPISI, SIOR  
+1 408 242 6187  
dion.campisi@colliers.com  
CA License No. 01321946

101 @ Trimble Office Park  
SANTA CLARA, CA



# 3140 De La Cruz Boulevard

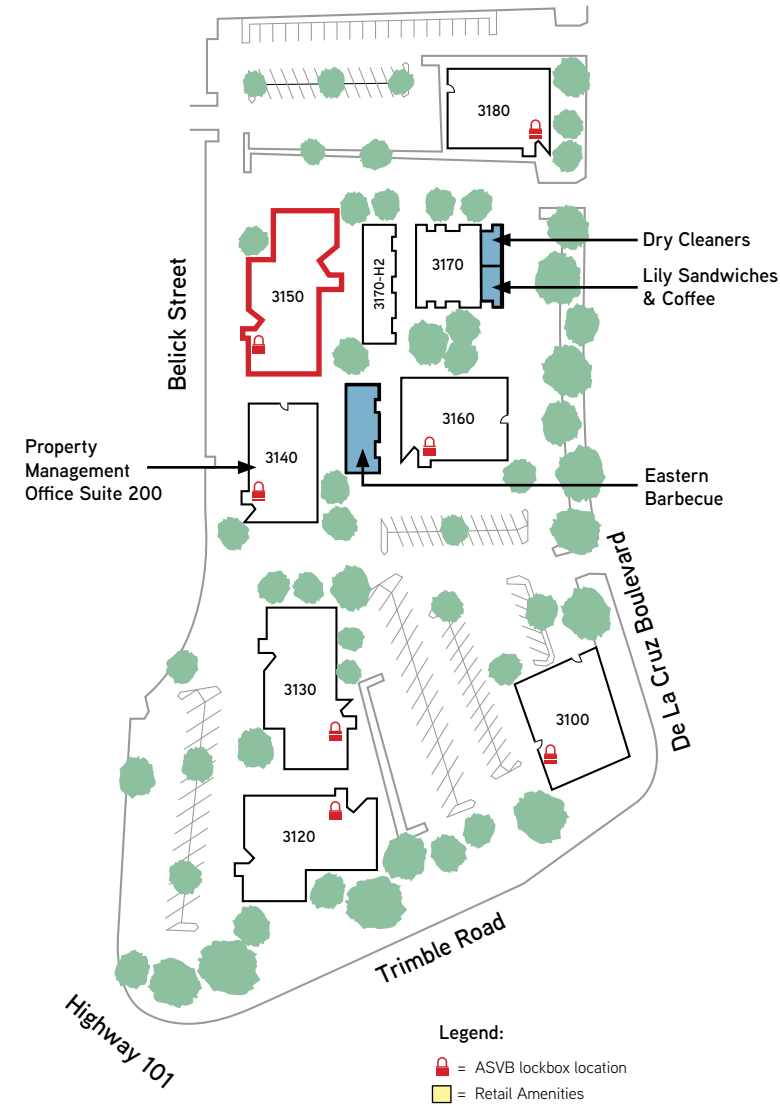
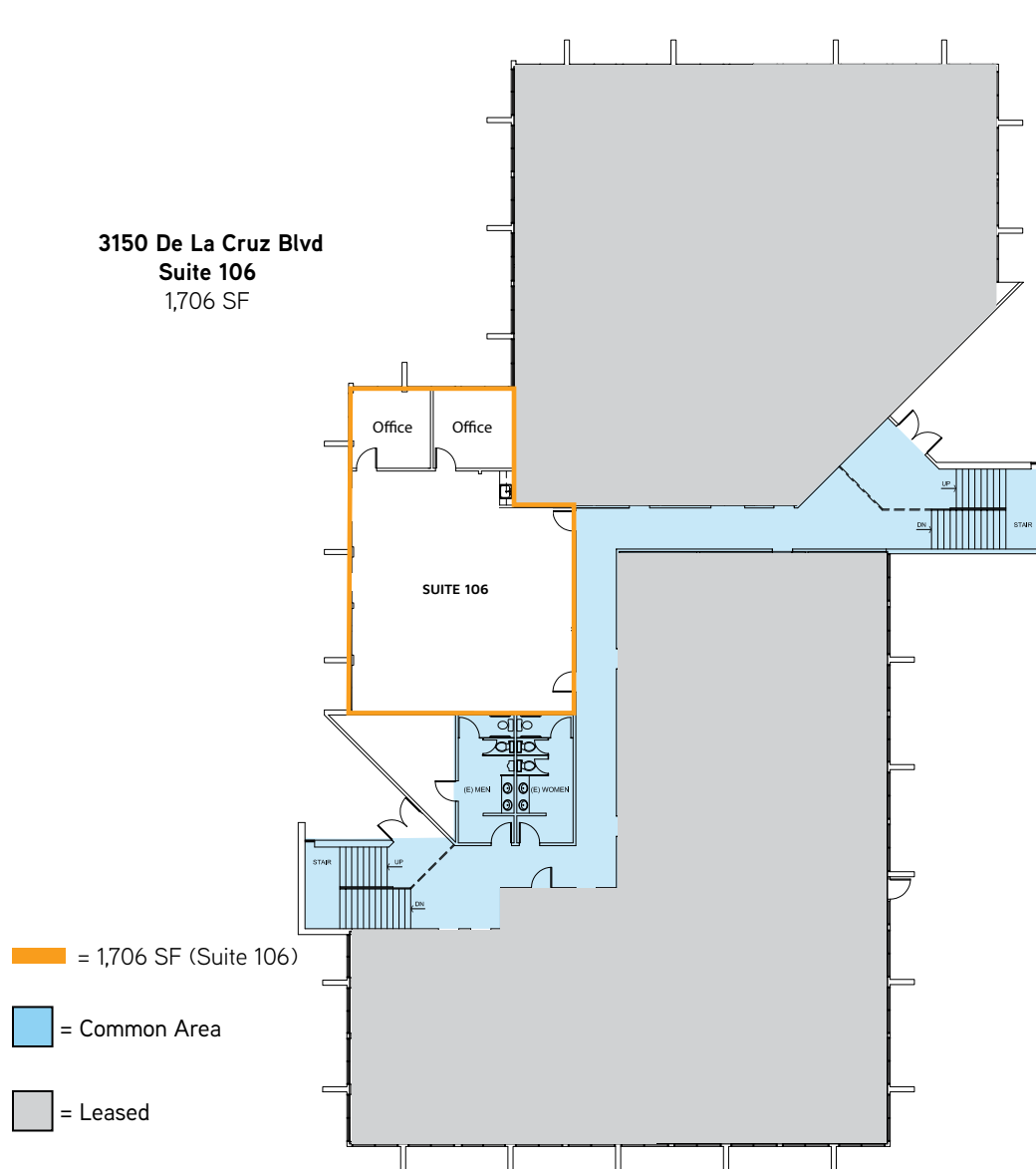


DION CAMPISI, SIOR  
+1 408 242 6187  
dion.campisi@colliers.com  
CA License No. 01321946

**101 @ Trimble Office Park**  
SANTA CLARA, CA



# 3150 De La Cruz Boulevard



DION CAMPISI, SIOB  
+1 408 242 6187  
dion.campisi@colliers.com  
CA License No. 01321946

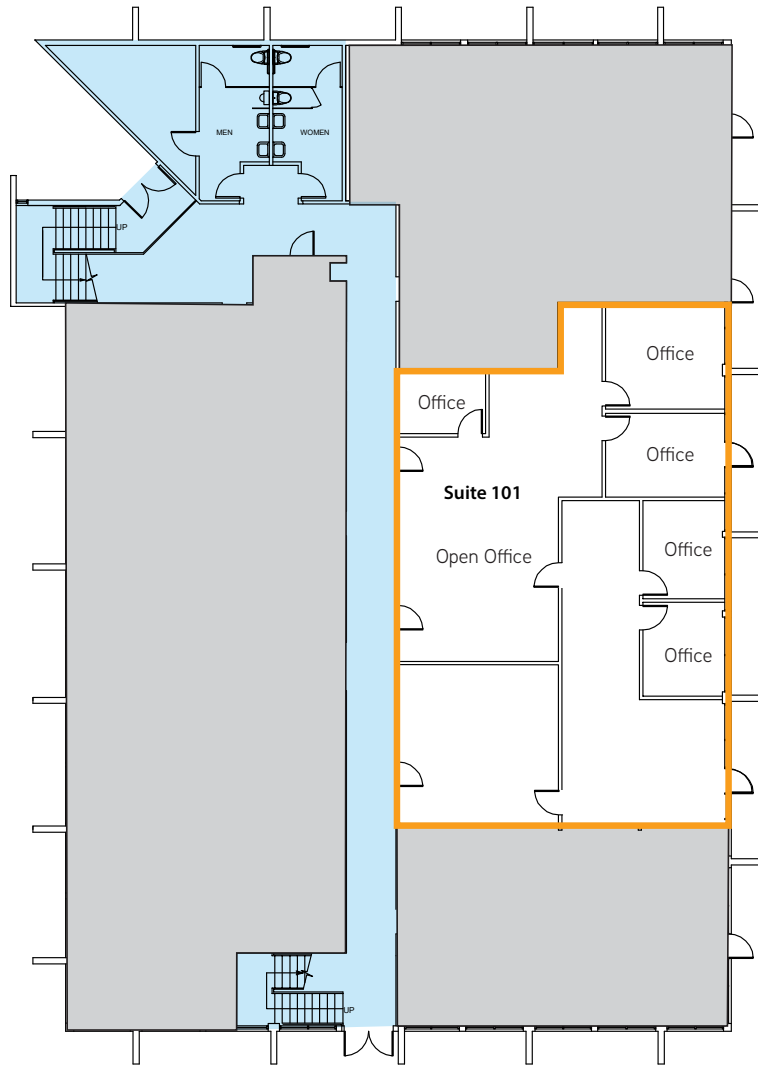
**101 @ Trimble Office Park**  
SANTA CLARA, CA



The information furnished has been obtained from sources we deem reliable and is submitted subject to errors, omissions and changes. Although Colliers International has no reason to doubt its accuracy, we do not guarantee it. All information should be verified by the recipient prior to lease, purchase, exchange, or execution of legal documents. © 2025 Colliers International



# 3160 De La Cruz Boulevard

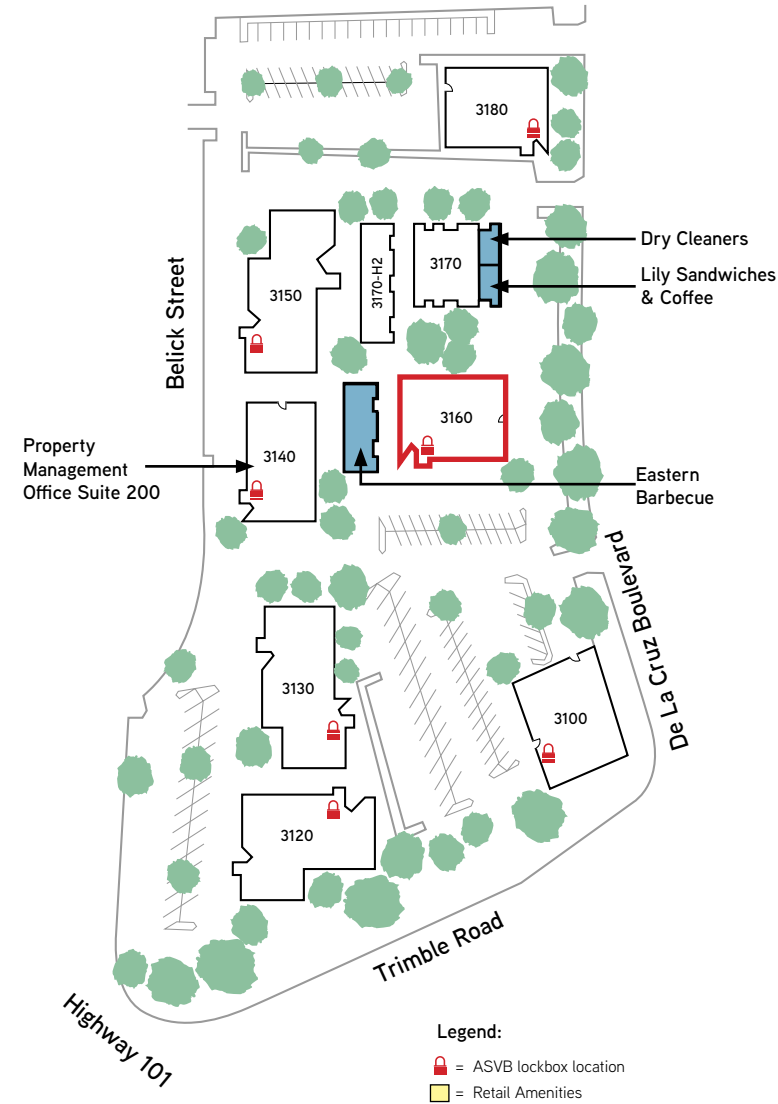


**3160 De La Cruz Blvd  
Suite 101  
2,974 SF**

Orange outline = 2,974 SF (Suite 101)

Blue outline = Common Area

Grey outline = Leased

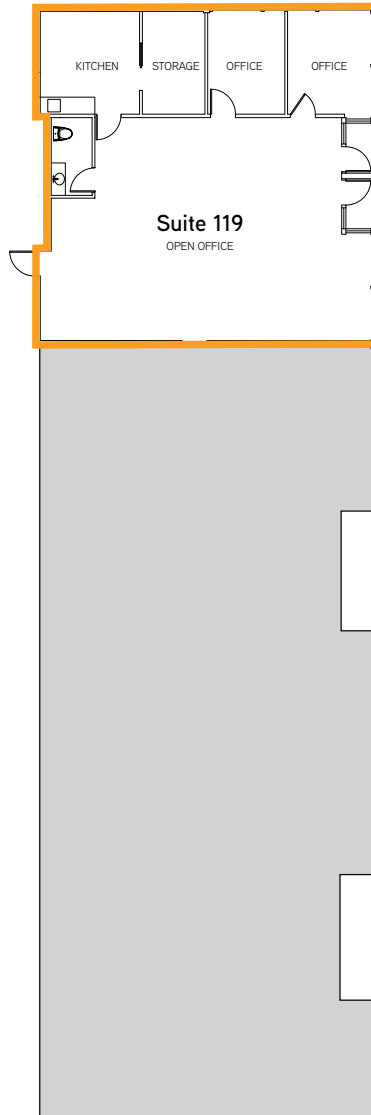


DION CAMPISI, SIOR  
+1 408 242 6187  
dion.campisi@colliers.com  
CA License No. 01321946

**101 @ Trimble Office Park**  
SANTA CLARA, CA



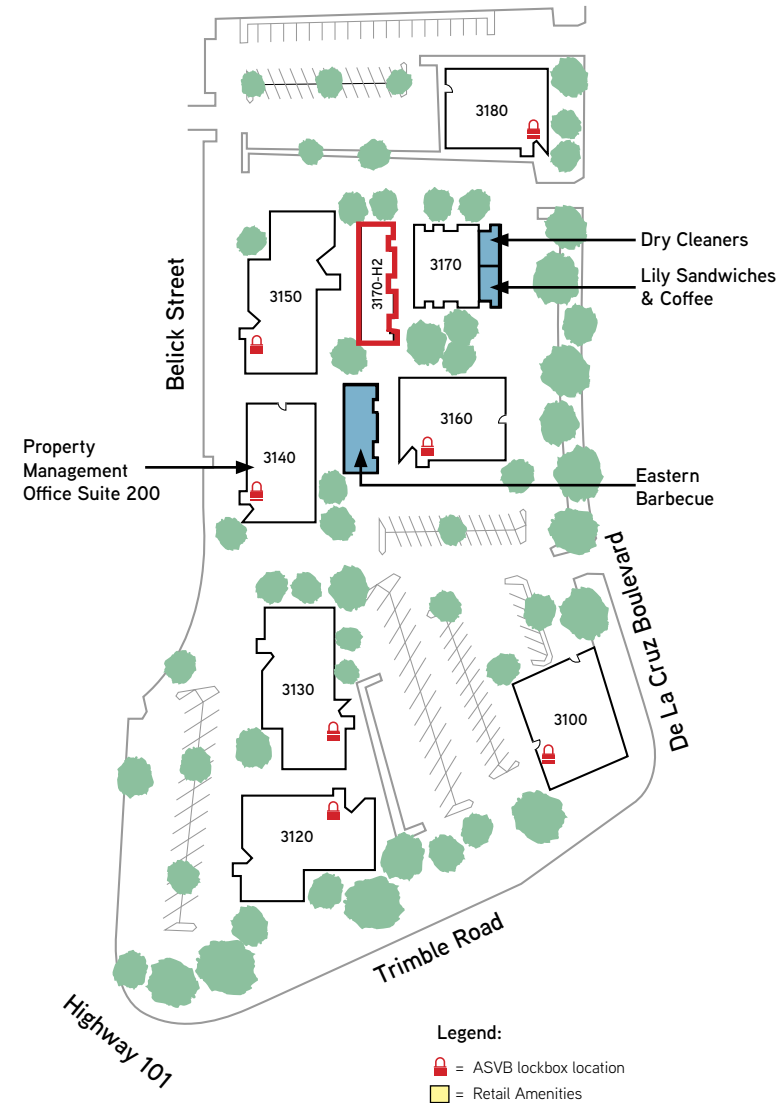
# 3170 De La Cruz Boulevard



**3170 De La Cruz Blvd - H2  
Suite 119**  
1,625 SF

Orange outline = 1,625 SF (Suite 119)

Gray area = Leased

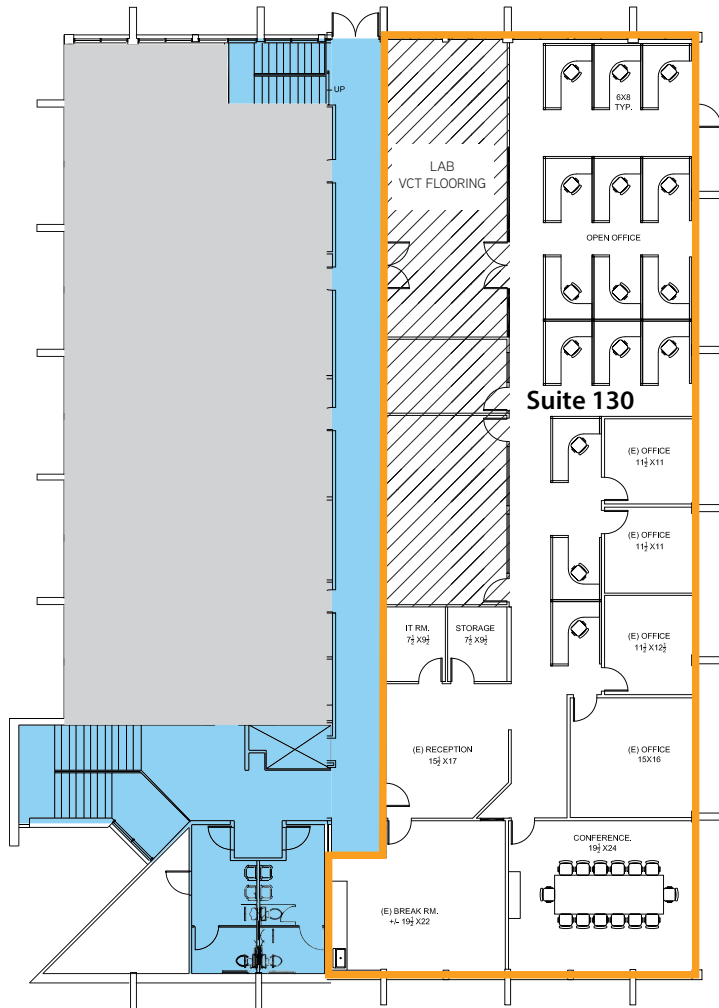


DION CAMPISI, SIOR  
+1 408 242 6187  
dion.campisi@colliers.com  
CA License No. 01321946

**101 @ Trimble Office Park**  
SANTA CLARA, CA



# 3180 De La Cruz Boulevard



**3180 De La Cruz Blvd  
Suite 130**  
5,806 SF

Lab, approx. 604 sq ft.  
3-ton ductless split system.  
Office area: 15-ton RTU/AC.

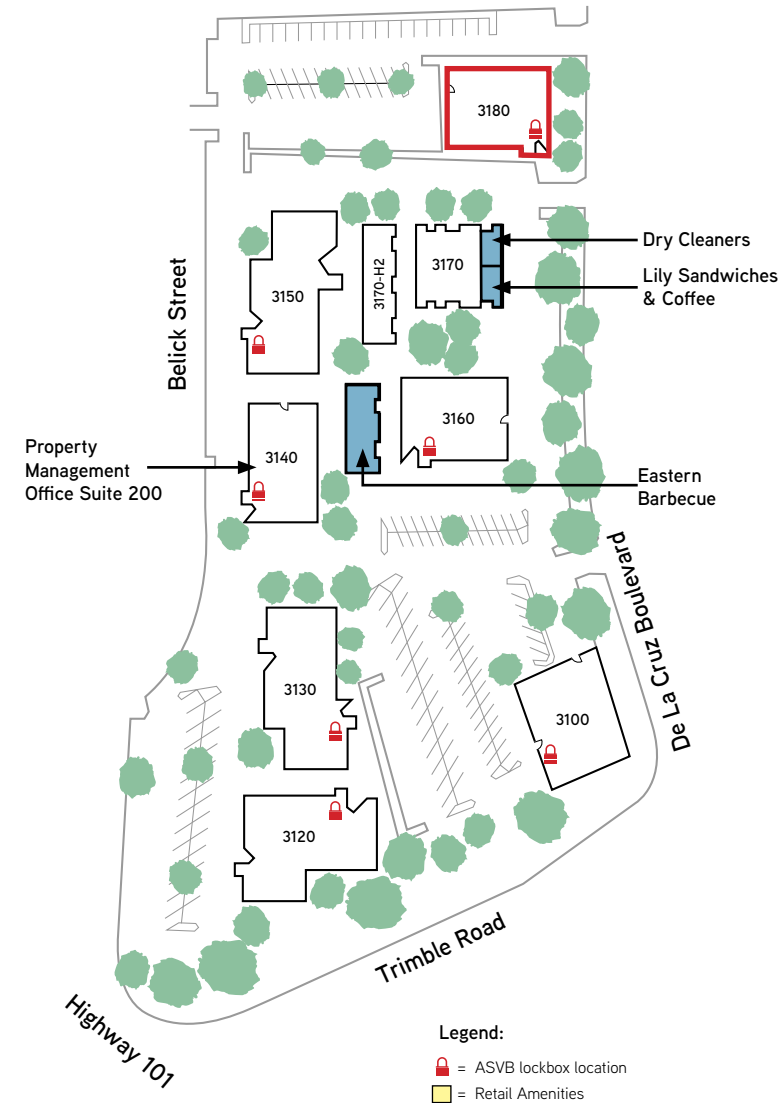


Orange outline = 5,806 SF (Suite 130)

Blue fill = Common Area

Hatched fill = Lab

Grey fill = Leased

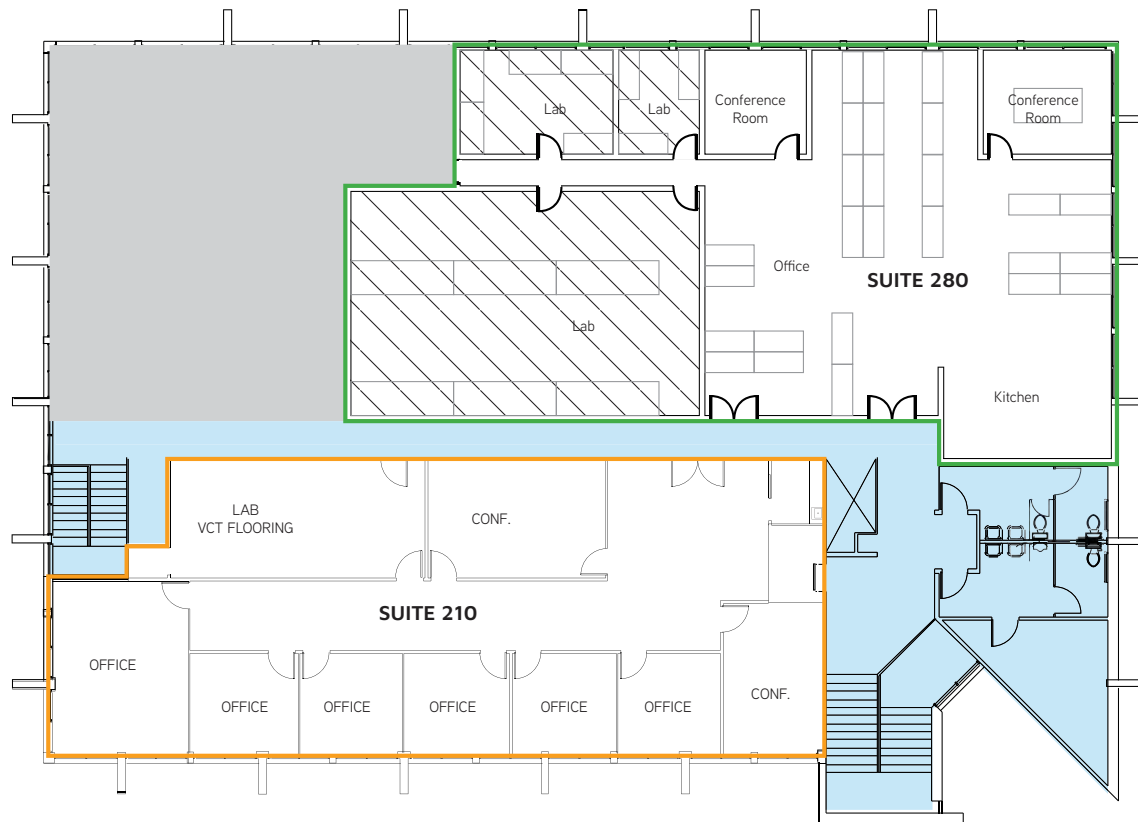


DION CAMPISI, SIOR  
+1 408 242 6187  
dion.campisi@colliers.com  
CA License No. 01321946

**101 @ Trimble Office Park**  
SANTA CLARA, CA



# 3180 De La Cruz Boulevard

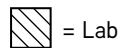


**3180 De La Cruz Blvd**  
**Suite 210 - 3,363 SF**  
 Lab, approx. 377 sq ft.  
 No dedicated AC in the lab.  
 Office area: 15-ton RTU/AC.



Orange outline = 3,363 SF (Suite 210)

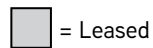
Green outline = 4,166 SF (Suite 280)



= Lab

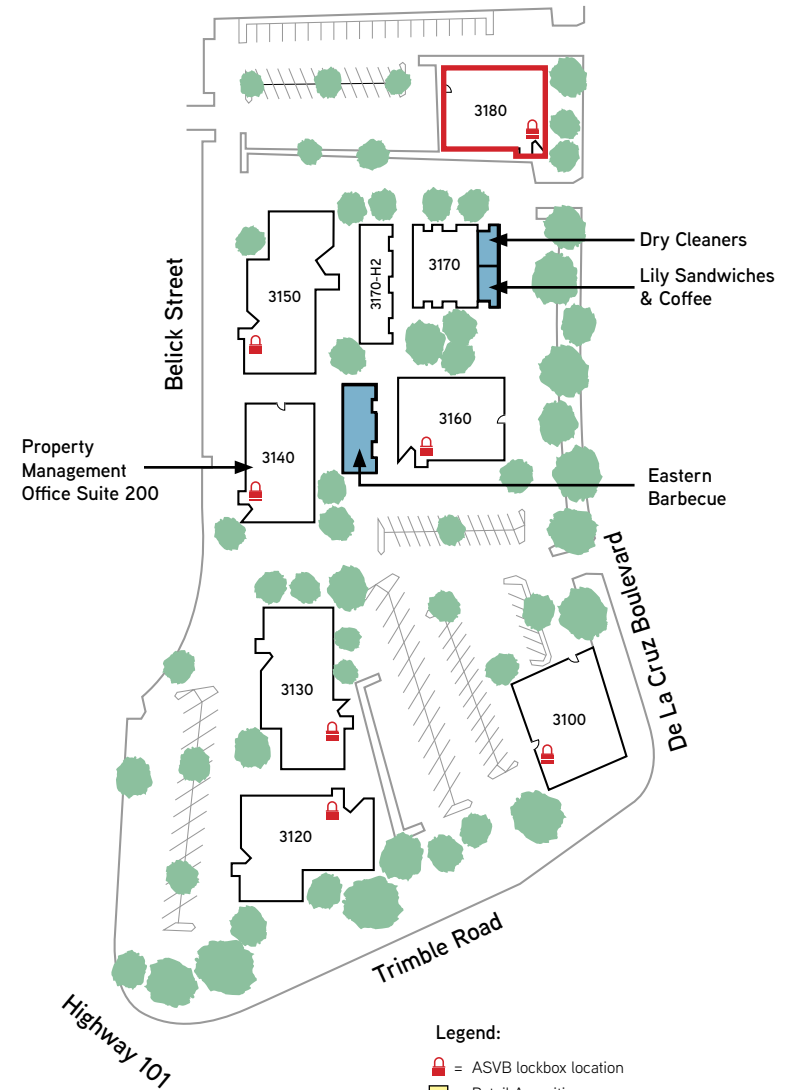


= Common Area



= Leased

**3180 De La Cruz Blvd**  
**Suite 280 - 4,166 SF**  
 Lab 1, approx. 490 sq ft. No dedicated AC in the lab.  
 Lab 2, approx. 836 sq ft.  
 No dedicated AC in the lab.  
 Office area: 15-ton RTU/AC shared with offices next door.



Legend:

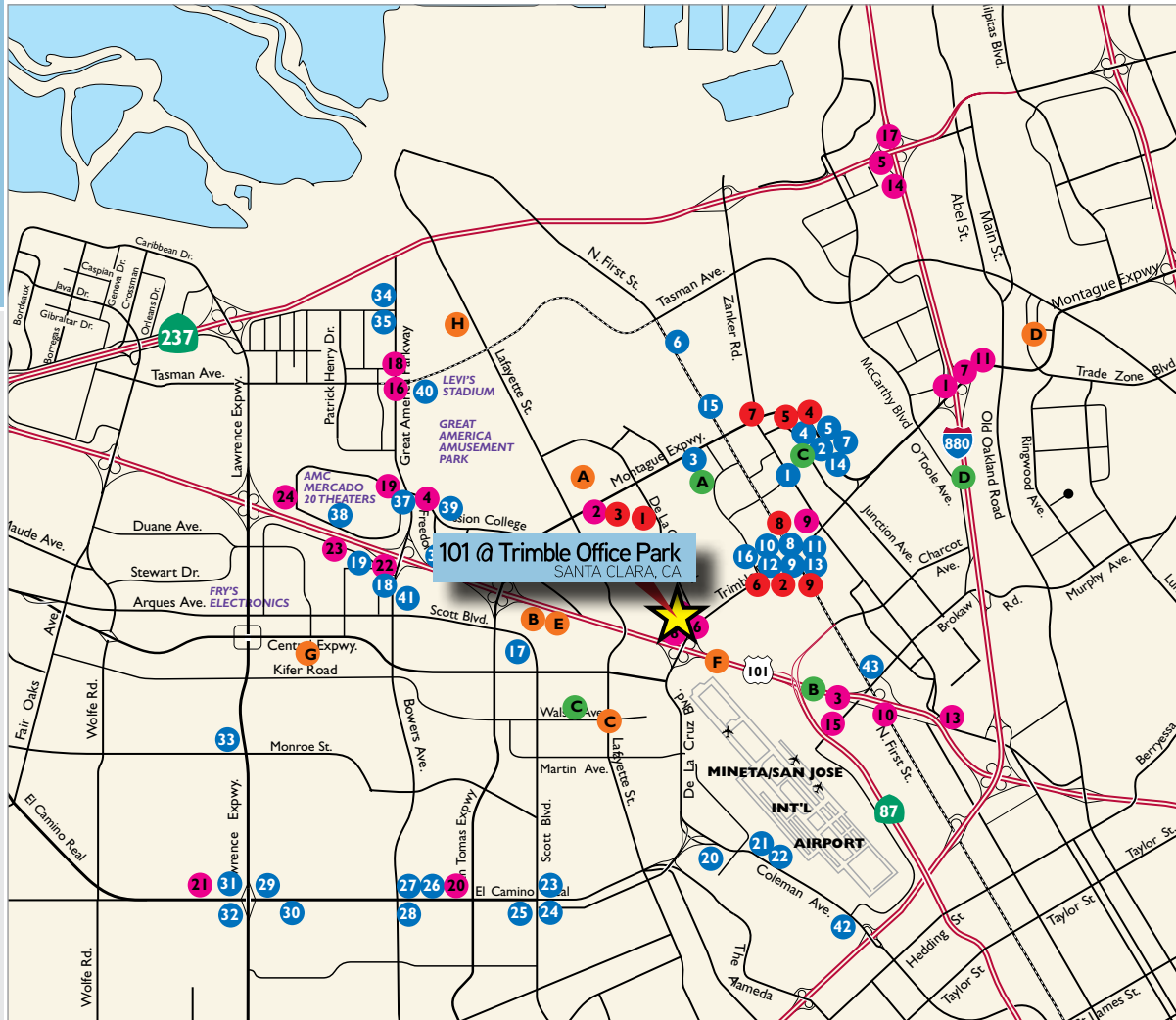
- Red lock icon = ASVB lockbox location
- Yellow box icon = Retail Amenities

DION CAMPISI, SIOR  
 +1 408 242 6187  
 dion.campisi@colliers.com  
 CA License No. 01321946

**101 @ Trimble Office Park**  
 SANTA CLARA, CA



# Amenities Map



## RESTAURANTS

1. Beryl's Place
2. Premier Pizza
3. **Rivermark Village**
  - Chipotle
  - Coldstone Creamery
  - Easterly Hunan Cuisine
  - Fantasia Coffee & Tea
  - Jamba Juice
  - Jersey Mike's Subs
  - Mezbaan Bar & Indian Cuisine
  - Peet's Coffee & Tea Piatto
  - Posh Bakery
  - Premier Pizza
  - Prolific Oven
  - Smashburger
  - Red Robin
4. Una Mas
5. China Taste Fast Food Restaurant
6. Quiznos
7. Hobee's Restaurant
8. Ume Chinese Fast Food
9. Sangam Indian Cuisine
10. Thai Orchid
11. Honba Sushi Express
12. Ace's Pizza
13. Olives Greek Cafe
14. Starbucks
15. Andiamo Cafe
16. De La Cruz Deli
17. Bamboo Leaf Vietnamese Cuisine
18. Sizzler
- Jack in the Box
- Arthur's
- McDonald's
19. El Torrito
20. McDonald's (near Costco)
21. Akita Sushi
22. Restaurant
23. Andy's BBQ
24. Noah's Bagels
- Jamba Juice
- Una Mas
- Korea House
25. Pho Thanh
26. El Pollo Loco
27. Sushi Sushi
- 99 Chicken
- Hana Maki
- Pizza Hut
- Yang Pyung
- Cactus Fresh
28. Peacock Indian Cuisine
29. Chili's
- King Noodle
- Paris Baguette
- Treya Sushi
30. Pho Hoa
- El Camino
- Mongolian BBQ
31. Starbucks
- Bombay Garden
32. Taco Bell
33. Vito's Famous Pizza
34. Taco Bell
35. KFC
- Togo's
36. Pedro's
- Birk's
37. IHOP
- Bennigan's
- House of Bagels
- Round Table Pizza
38. Tomatina
- Jamba Juice
- Sushi Yoyo
- Ben & Jerry's
- Taxi's Restaurant
- Starbucks
- In-N-Out Burger

Lettuce Sandwich Shop

39. Parcel 104
40. La Fontana
41. Specialty's Bakery
42. In-N-Out Burger,
- MOD Pizza,
- Smoking Pig
- BBQ, Chipotle,
- Starbucks, Which
- Wich Superior
- Sandwiches
43. McDonald's

20. Howard Johnsons
- Granada Inn
- Santa Clara
21. Vagabond Inn
22. Embassy Suites
23. The Plaza Suites
24. Ramada Inn

## BANKS

1. Wells Fargo Bank
2. Bank of America
3. Keypoint Credit Union
4. Chase Bank
5. Meriwest Credit Union
6. Fremont Bank
7. Wells Fargo Bank
8. Wells Fargo Bank
9. Comerica Bank

## HOTELS

1. Beverly Heritage Hotel
2. Sierra Suites
3. Doubletree Hotel San Jose
4. Marriott-Santa Clara
5. Homestead Studio Suites Hotel
6. Best Western Gateway
7. Sheraton San Jose Hotel
8. Biltmore Hotel & Suites Silicon Valley
9. Homewood Suites San Jose
10. Fairfield Inn - San Jose Airport
11. Sleep Inn Silicon Valley
12. Sodashio Marriott
13. Staybridge Suites San Jose
14. Crowne Plaza San Jose Silicon Valley
15. Courtyard by Marriott
16. Hilton Santa Clara
17. Hilton Garden Inn-Milpitas
18. Hyatt Regency/Santa Clara Convention Center
19. Holiday Inn

## MAIL SERVICE

- A. Postal Annex
- B. FedEx Office
- C. US Post Office Ship Center
- D. California Mailing Service Inc.

## HEALTH CLUBS

- A. Curves
- B. Gold's Gym
- C. Club One at Silicon Valley
- D. South Bay Athletic Club
- E. McCall Gym Group Inc.
- F. Club One
- G. Decathlon Club
- H. Santa Clara Golf and Tennis Club

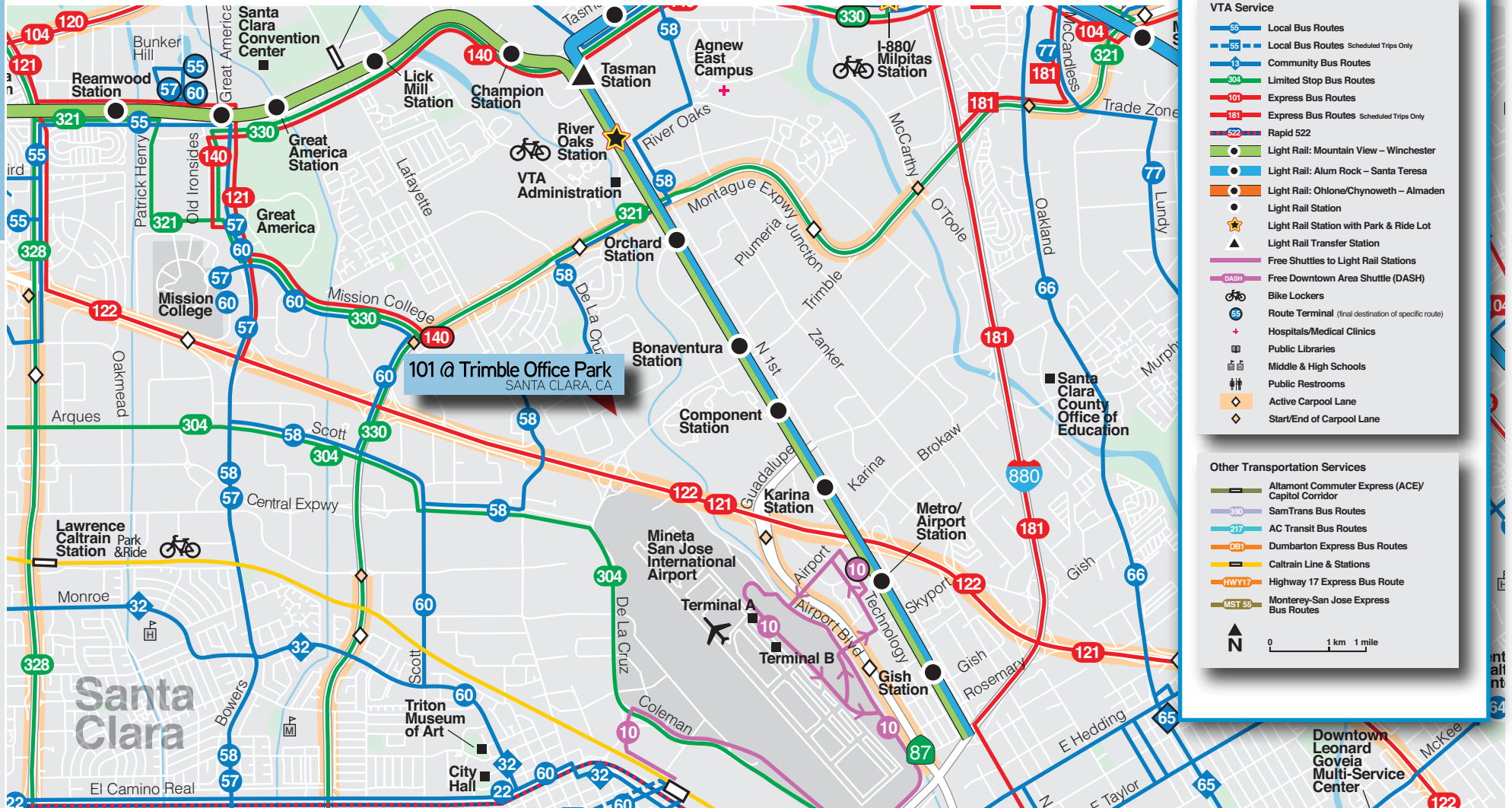
DION CAMPISI, SIOR  
+1 408 242 6187  
dion.campisi@colliers.com  
CA License No. 01321946

**101 @ Trimble Office Park**  
SANTA CLARA, CA





# Transportation Map



DION CAMPISI, SIOR  
+1 408 242 6187  
dion.campisi@colliers.com  
CA License No. 01321946

101 @ Trimble Office Park  
SANTA CLARA, CA





# Aerial Map



DION CAMPISI, SIOR  
+1 408 242 6187  
dion.campisi@colliers.com  
CA License No. 01321946

101 @ Trimble Office Park  
SANTA CLARA, CA

