

FOR SALE

VACANT LAND

±79.59
ACRES
FOR
SALE

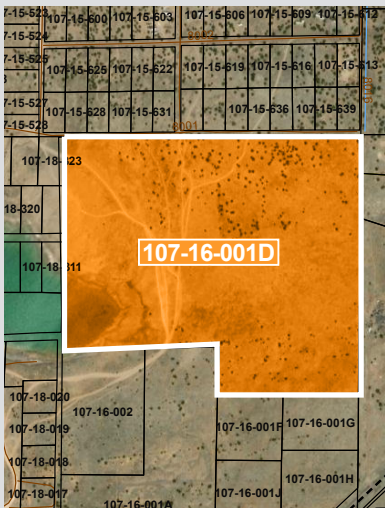
APACHE COUNTY

Prime investment
opportunity at Hwy 61 &
Charleen Dr in Concho, AZ.

107-16-001D

SALE PRICE

\$198,975



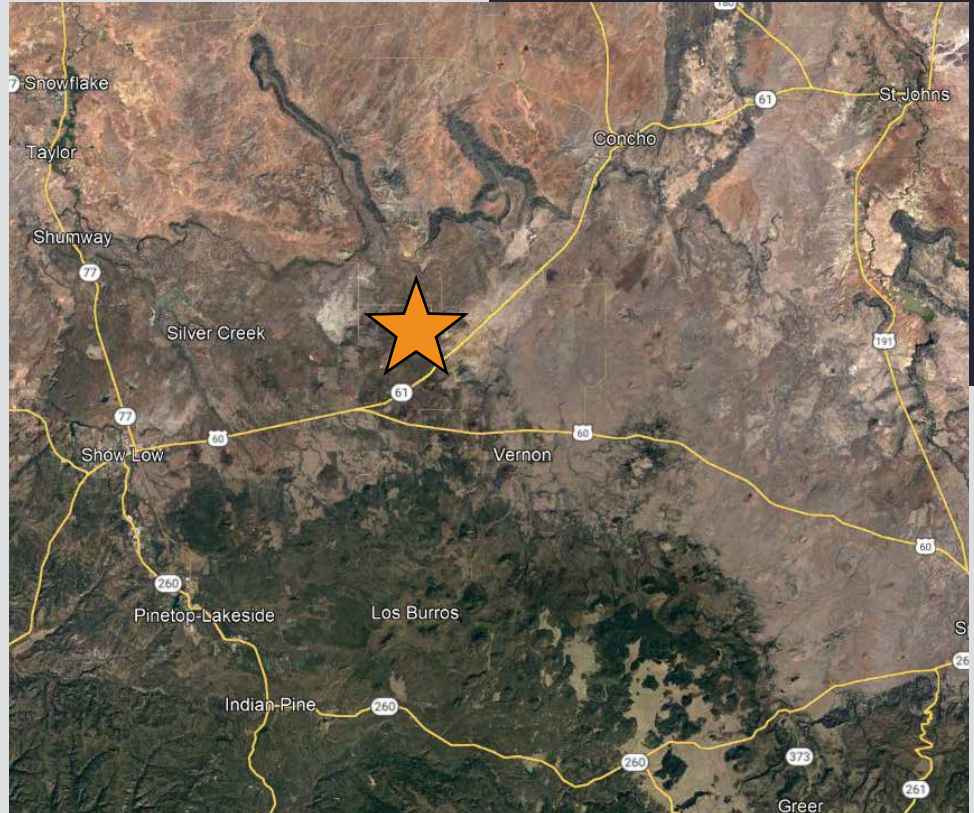
CONTACT US



COMMERCIAL PROPERTIES INC.

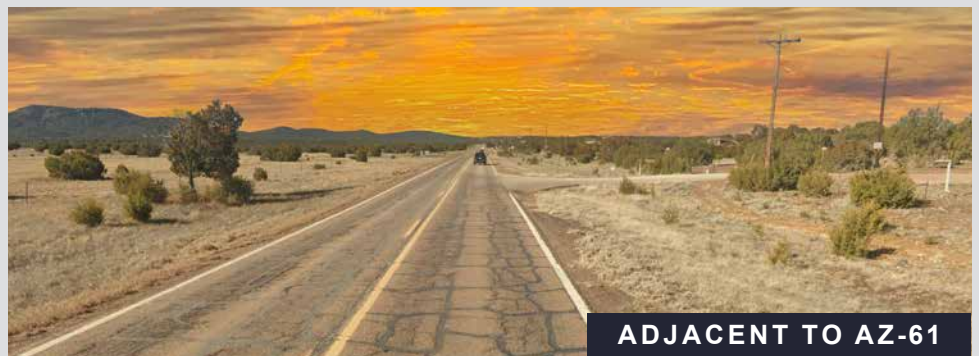
Locally Owned. Globally Connected. CONFAC

2323 W. University Dr. Tempe, AZ 85281
8777 N. Gayley Center Dr. Ste 245, Scottsdale, AZ 85258
480.966.2301 | WWW.CPIAZ.COM



HIGHWAY 61 & CHARLEEN DR.

Apache County in northeastern Arizona is renowned for its breathtaking landscapes, outdoor activities, and natural splendor. Home to attractions like Petrified Forest National Park and the largest Native American reservation, Navajo Nation, it offers a tranquil, rural lifestyle due to its low population density. Despite its appeal for those seeking a quieter life, it's essential to acknowledge that the county's economy relies heavily on tourism and agriculture, making it less ideal for those pursuing urban job opportunities. Apache County stands out as a popular choice for acquiring raw land in Arizona, with relaxed zoning regulations and other compelling reasons to consider investing in this picturesque region.



ADJACENT TO AZ-61



Tyson Breinholt
D 480.966.7513
M 602.315.7131
tbreinholt@cpiaz.com

Cliff Jenkins
D 480.634.2332
M 480.888.6017
cjenkins@cpiaz.com

Caleb Allen
D 480.621.3290
M 480.622.4174
callen@cpiaz.com

The information contained herein has been obtained from various sources. We have no reason to doubt its accuracy; however, J & J Commercial Properties, Inc. has not verified such information and makes no guarantee, warranty or representation about such information. The prospective buyer or lessee should independently verify all dimensions, specifications, floor plans, and all information prior to the lease or purchase of the property. All offerings are subject to prior sale, lease, or withdrawal from the market without prior notice.

11 18 25