

FOR GROUND LEASE OR BUILD TO SUIT



ADAM LEWIS
 al@newmarkmw.com
 direct 801.746.4708
[View Profile](#)



PROPERTY DETAILS

1665 W 1200 S, Marriott-Slaterville, UT 84404

- Approx. 2.07 Acres Available, Drive-Thru Permitted
- Located at the Freeway Entrance | Exit
- Contact listing agent for rates and additional information
- Retail opportunity next to future 5 Acre Fuel Station (Opening 2025)
- Excellent Freeway Retail site on 12th Street

SURROUNDING TENANTS



2025 DEMOS



EST. POPULATION

1 MILE » 2,912
 3 MILE » 39,530
 5 MILE » 162,910



EST. HOUSEHOLDS

1 MILE » 913
 3 MILE » 14,677
 5 MILE » 59,445



EST. AVERAGE HH INCOME

1 MILE » \$120,216
 3 MILE » \$95,657
 5 MILE » \$101,107

**FULL SERVICE
 COMMERCIAL REAL ESTATE**
 312 East South Temple
 Salt Lake City, UT 84111
 Office 801.456.8800
www.newmarkmw.com

SOUTH FACING



NEWMARK
MOUNTAIN WEST

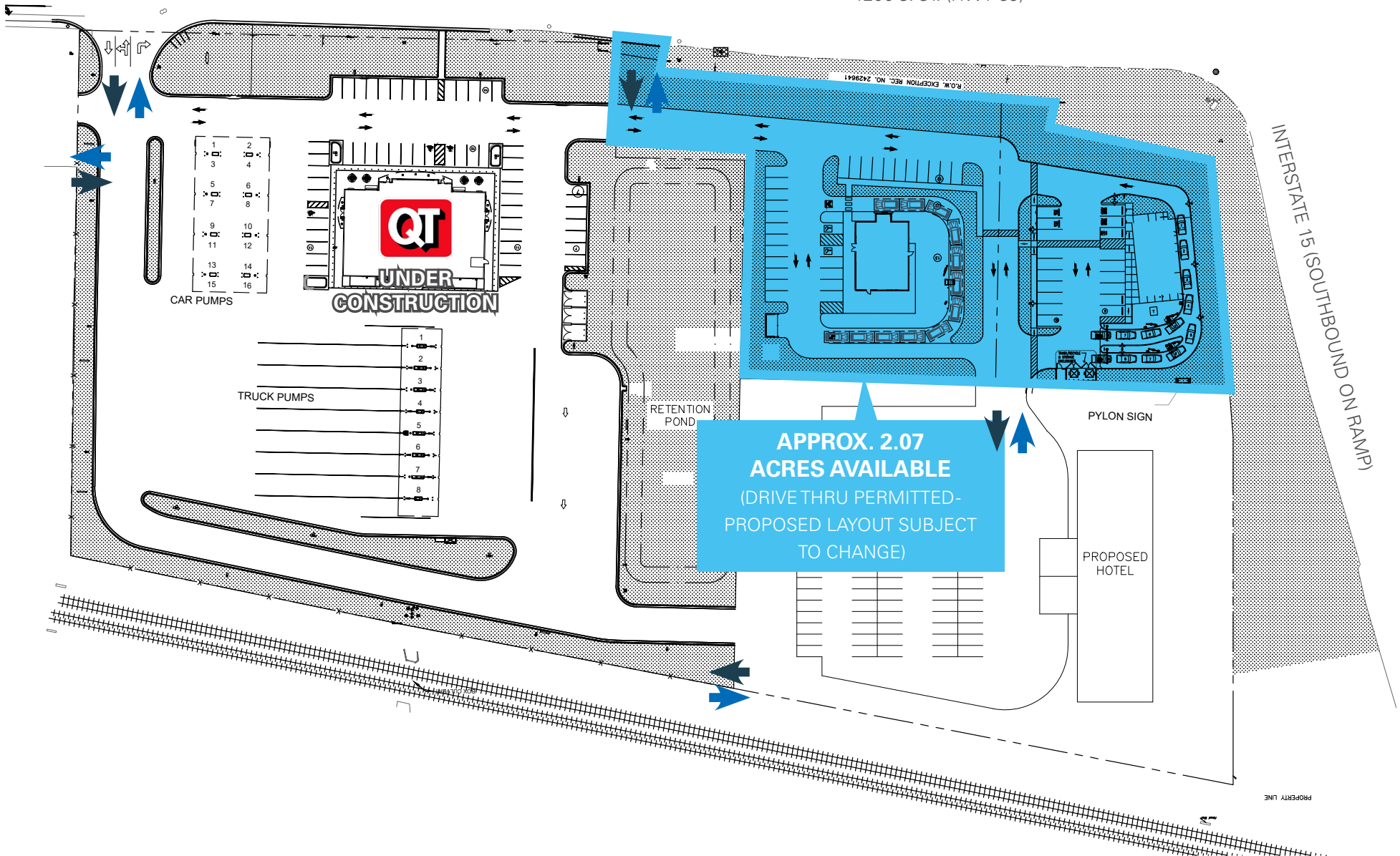
ADAM LEWIS
al@newmarkmw.com
direct 801.746.4708
[View Profile](#)

NORTHEAST FACING



**FULL SERVICE
COMMERCIAL REAL ESTATE**
312 East South Temple
Salt Lake City, UT 84111
Office 801.456.8800
www.newmarkmw.com

1200 S. ST. (HWY 39)



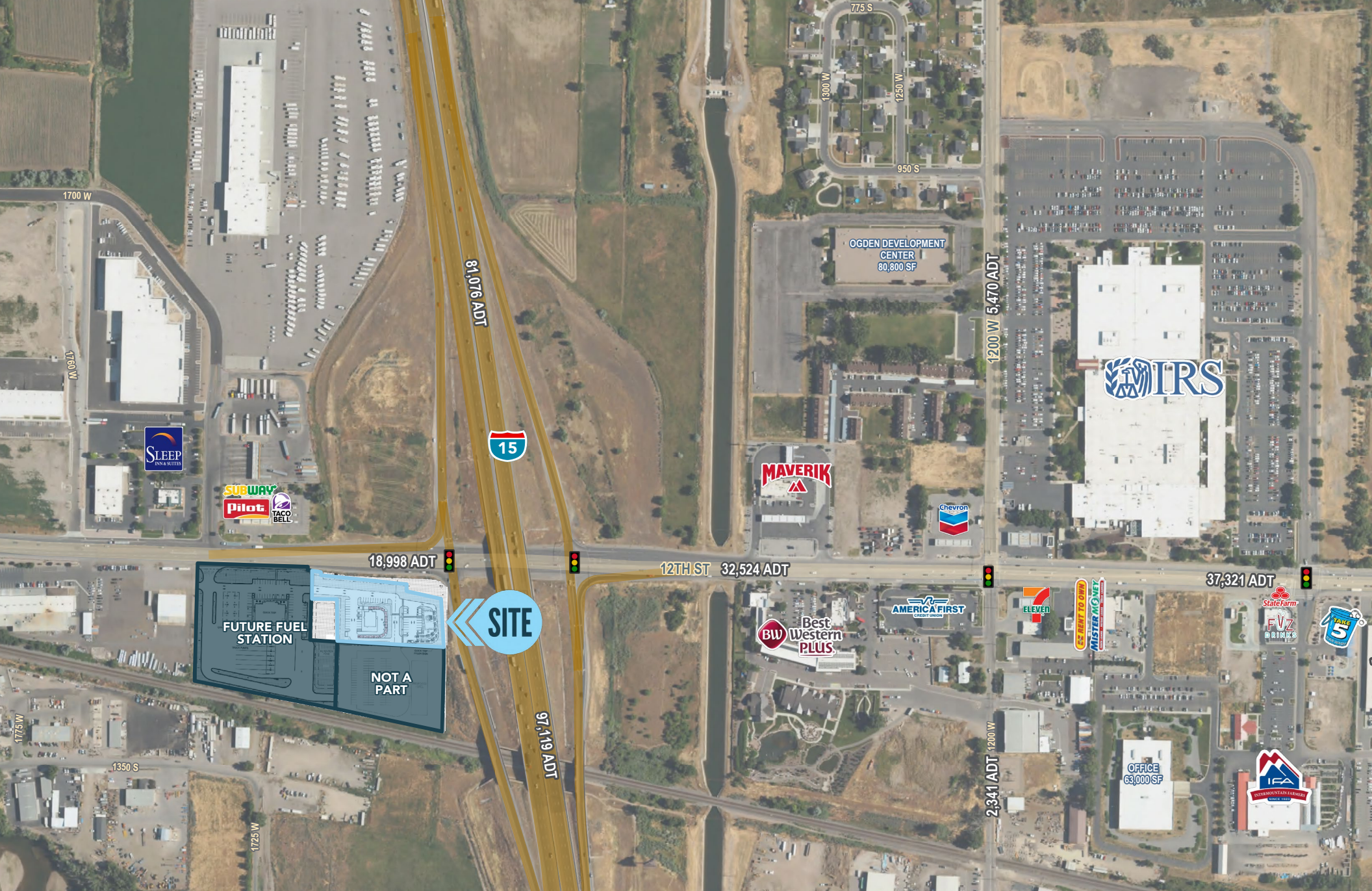
ADAM LEWIS
al@newmarkmw.com
direct 801.746.4708
[View Profile](#)

**FULL SERVICE
COMMERCIAL REAL ESTATE**
312 East South Temple
Salt Lake City, UT 84111
Office 801.456.8800
www.newmarkmw.com



ADAM LEWIS
al@newmarkmw.com
direct 801.746.4708
[View Profile](#)

**FULL SERVICE
COMMERCIAL REAL ESTATE**
312 East South Temple
Salt Lake City, UT 84111
Office 801.456.8800
www.newmarkmw.com



ADAM LEWIS
al@newmarkmw.com
direct 801.746.4708
[View Profile](#)

**FULL SERVICE
COMMERCIAL REAL ESTATE**
312 East South Temple
Salt Lake City, UT 84111
Office 801.456.8800
www.newmarkmw.com

Single Family Permits Multi Family Permits

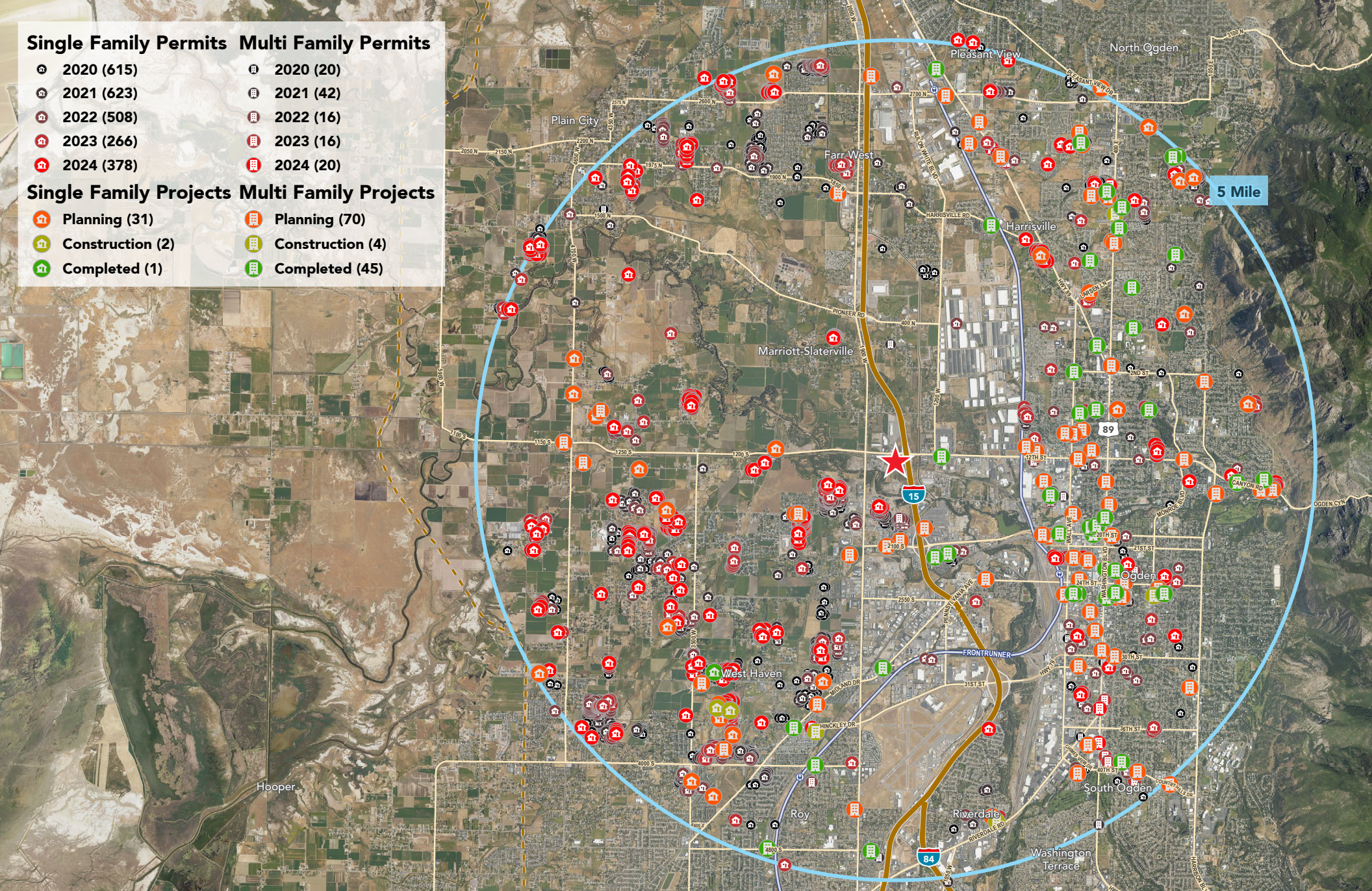
- 2020 (615)
- 2021 (623)
- 2022 (508)
- 2023 (266)
- 2024 (378)

- 2020 (20)
- 2021 (42)
- 2022 (16)
- 2023 (16)
- 2024 (20)

Single Family Projects Multi Family Projects

- Planning (31)
- Construction (2)
- Completed (1)

- Planning (70)
- Construction (4)
- Completed (45)



ADAM LEWIS
 al@newmarkmw.com
 direct 801.746.4708
[View Profile](#)

**FULL SERVICE
 COMMERCIAL REAL ESTATE**
 312 East South Temple
 Salt Lake City, UT 84111
 Office 801.456.8800
www.newmarkmw.com