



LOCATION FINDERS INTERNATIONAL, INC.

9440 Enterprise Drive | Mokena, IL 60448 | lfirealestate.com | 708.478.7666

Sycamore, IL

Southwest Corner of Rt. 23 & Peace Road



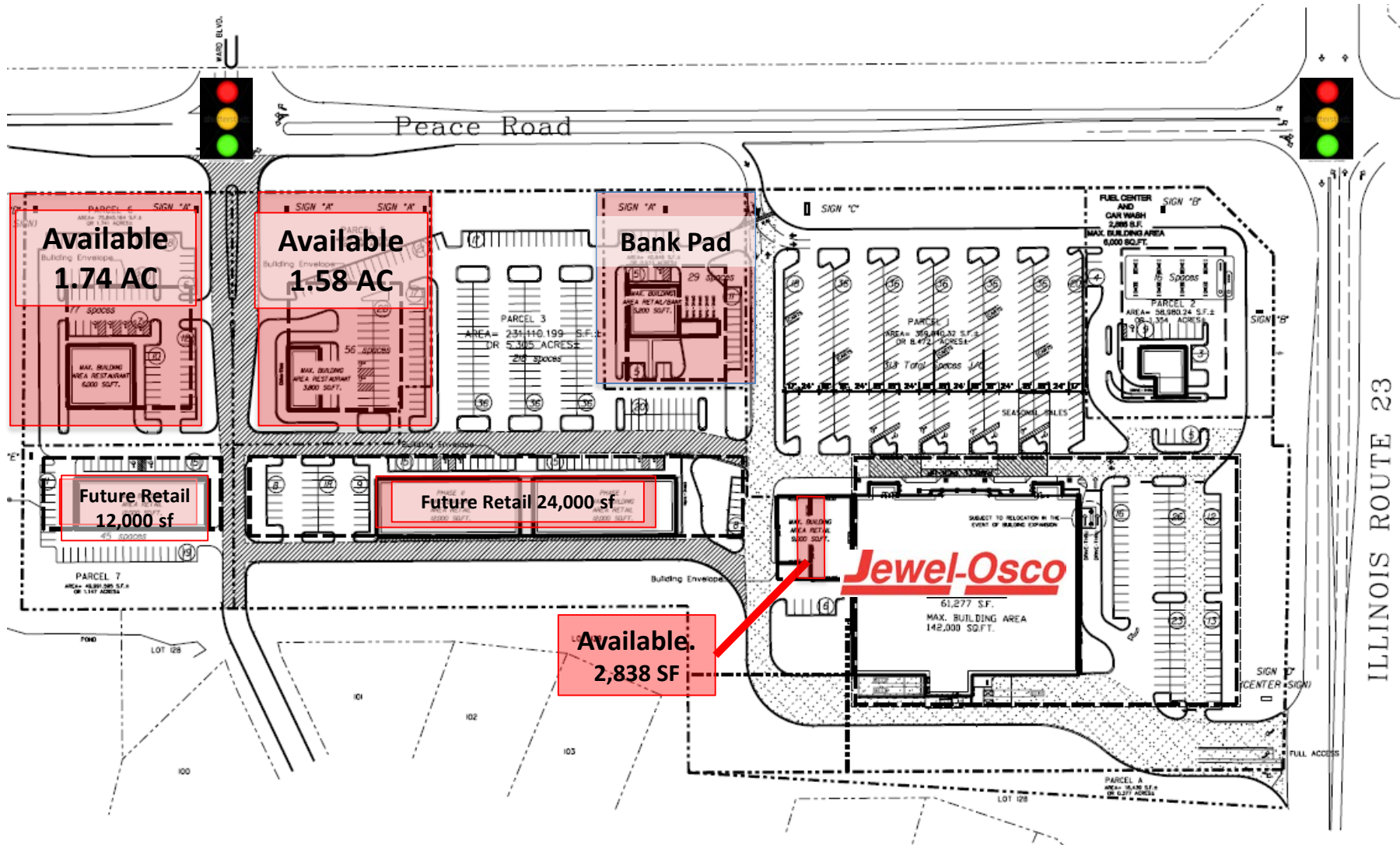


Southwest Corner of Rt. 23 & Peace Rd.



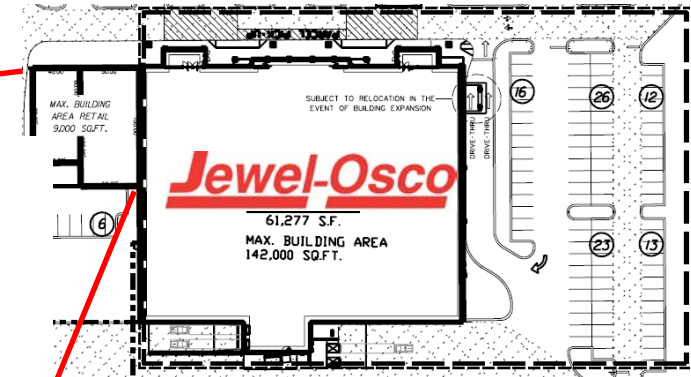
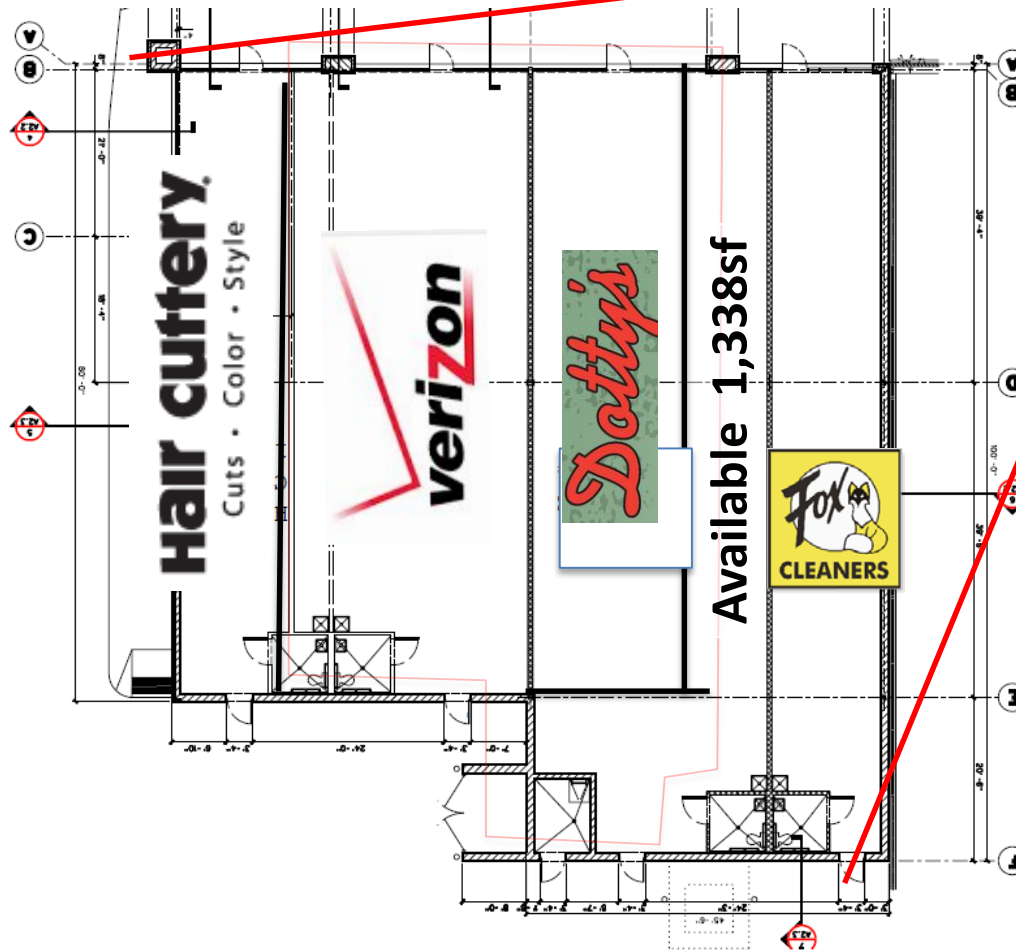


Southwest Corner of Rt. 23 & Peace Rd.





Southwest Corner of Rt. 23 & Peace Rd.





Southwest Corner of Rt. 23 & Peace Rd.

Site Plan Summary

- **Project GLA:** 125,000 sf
- **Available:**
 - 2,838sf inline space adjacent to Jewel Osco.
 - Outlots and future inline retail space.
- **Access:** Full access off Peace Road at signalized intersection. Full access off Rt. 23.
- **Traffic:** 11,900 ADT on Peace Rd.; 11,700 ADT on Rt. 23.
- **Signage:** Pylon/Monument signage available.

Market Summary

This Jewel-Osco anchored development is strategically located at the southwest corner of Rt. 23 and Peace Rd in Sycamore. This is the dominant grocery anchored center on the north side of the trade area and serves the surround markets of Sycamore, Genoa, and DeKalb.

Contact Information

Alan Erickson

e: aerickson@lfirealestate.com

p: (708) 390-1629



Southwest Corner of Rt. 23 & Peace Rd.

