



TOWER
PLACE
100



3340 Peachtree Road, Atlanta, Georgia 30326

BUILDING SPECS

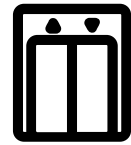
Tower Place 100, Where Success Finds a Place to Call Home

Discover Tower Place 100, where every square inch is engineered to enhance and uplift your business narrative. As the cornerstone of Buckhead's commercial excellence, our offices serve as more than mere workspaces; they are the catalysts for boundless professional growth and a testament to sophisticated entrepreneurship.

With state-of-the-art facilities, bespoke office configurations, and a neighborhood rich in amenities, we create a setting where leaders and innovators converge to redefine industry standards. Step into a realm where your company's future is not only envisioned but vigorously championed in every dimension.



24/7 Concierge/
On-site Security



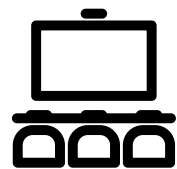
Destination
Dispatch Elevators



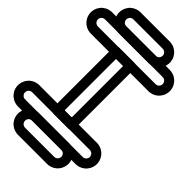
Walkable
Retail



Unparalleled
Access



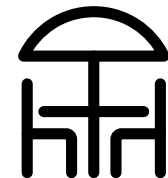
Conference
Center



Fitness Facility
(coming soon)

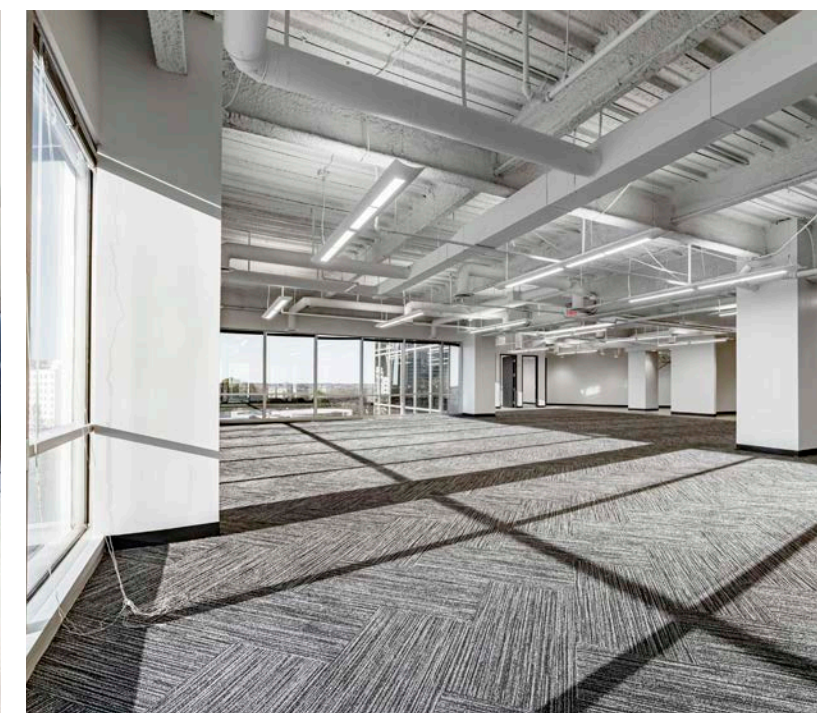


Marta Access



Tower Walk
Green Space

TOWER
PLACE
100



LOCATION AND ACCESS

Seamless Connectivity, Strategic Access

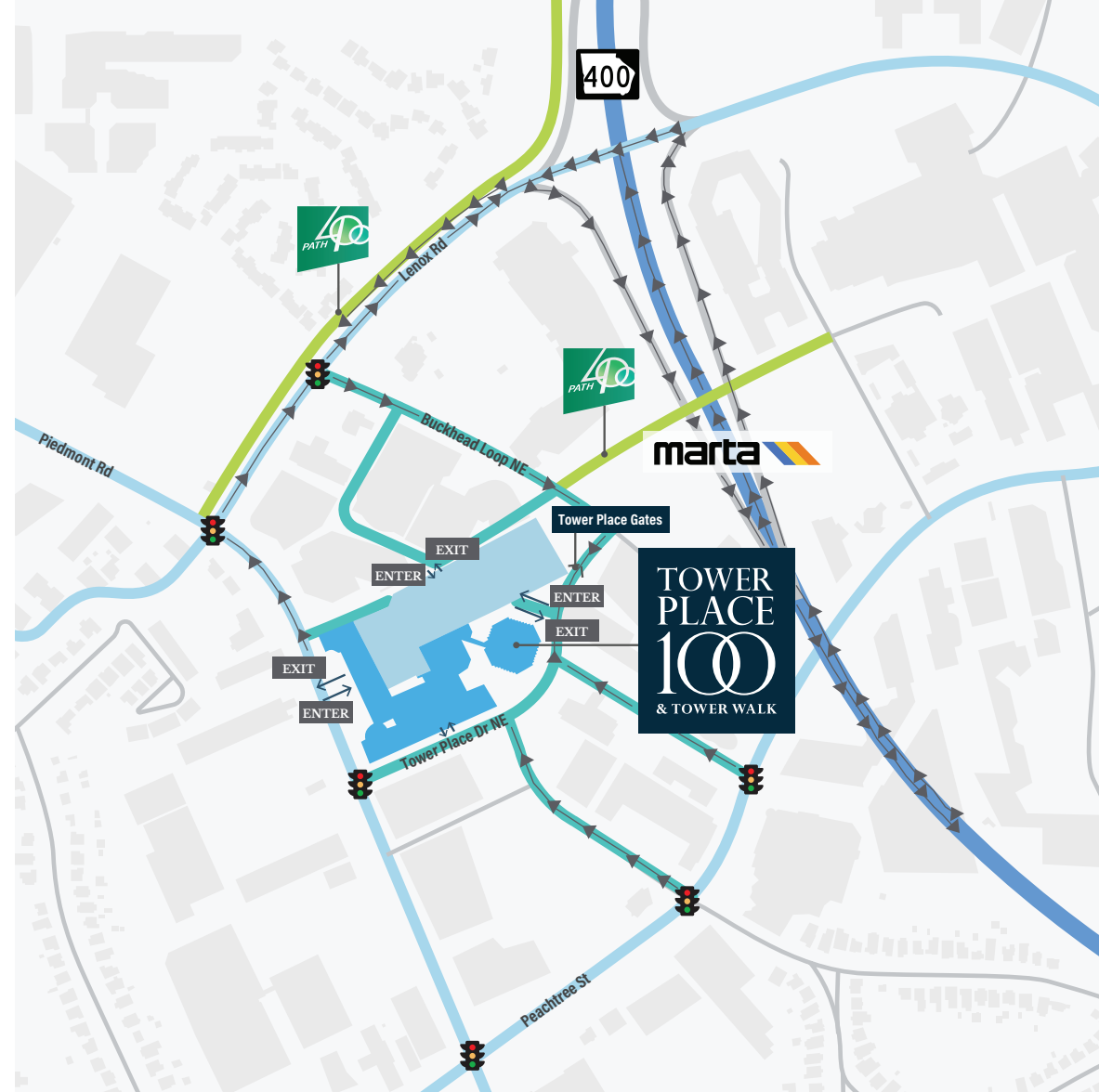
At Tower Place 100, we understand that accessibility is crucial in today's fast-paced world. Our prime location ensures that you have unparalleled access to major thoroughfares such as GA-400, Piedmont Road, and Peachtree Road. Each route offers direct and efficient ingress and egress, optimizing your daily commute and travel times. These main arteries streamline your journey to and from the workplace, empowering you with additional hours in your day to focus on what truly matters — your business objectives and personal commitments.

We take pride in offering not just an office space, but a strategic hub designed to keep you interconnected with the city's heartbeat.

1 min
Drive to GA-400

5 min
Drive to I-85

6 min
Drive to I-285



80
Walk Score

55
Transit Score

6 min
Walk to Marta

Directly accessible from the Lenox and Buckhead Marta stations, and strategically situated at the center of GA-400, Peachtree Road, Piedmont Road, and Lenox Road.



BUILDING AMENITIES

Unrivaled Amenities, Elevating Expectations

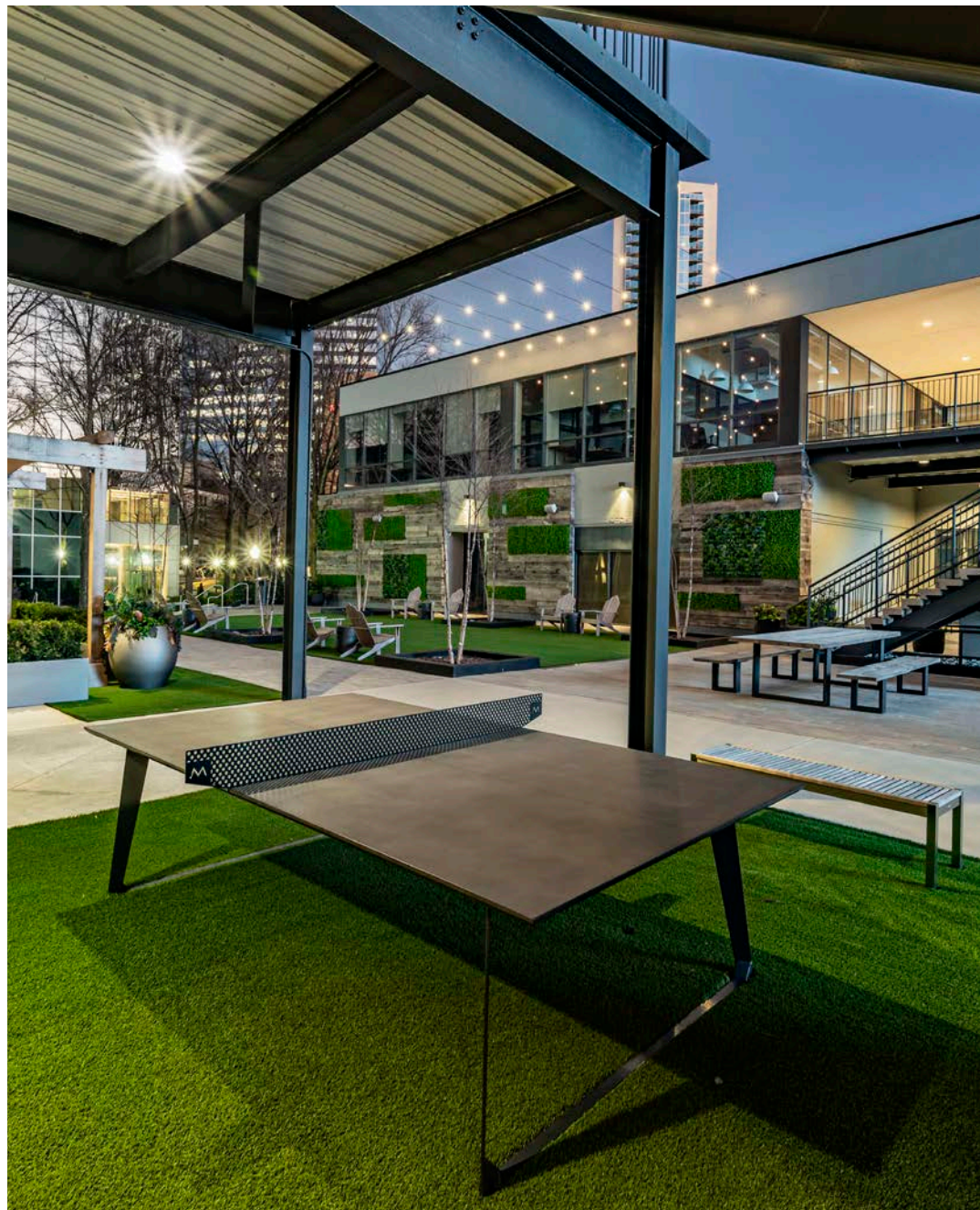
Embrace a working environment that anticipates your every need with Tower Place 100, offering versatile office space with the most sought-after amenities. From the soaring views of Atlanta's skyline, to the flexibility of Tower Walk, our outdoor green spaces where you can plug in, or unwind.

Offering tenants covered parking, a lobby coffee bar and convenience store for quick essentials, and access to a range of food and retail options within the building, making every task just a step away. Whether it's hopping into a meeting or grabbing a quick meal, convenient onsite retail and a well-stocked sundry shop ensure that efficiency is woven into every thread of your day.



Tenants have access to Tower Walk, Tower Place 100's newly renovated green space. Equipped for outdoor dining, large company meetings and events, or a place to plug in away from a traditional office setting.

Enjoy ping pong tables, and an impressive screen to watch sporting events or corporate virtual events.



Coffee Bar/
Convenience Store

Cafe 100

Tower Walk Green Space

Renovated Lobby

Conference Facility

New Fitness Center
(coming soon)

Guffey's

Solomon Brothers

Covered Parking

Within The Buc
Rideshare Zone

Marta Access

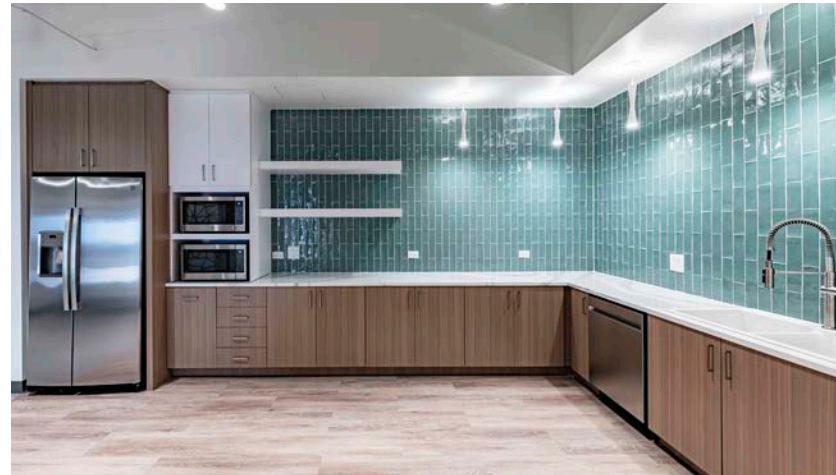


AVAILABLE OFFICE SPACE

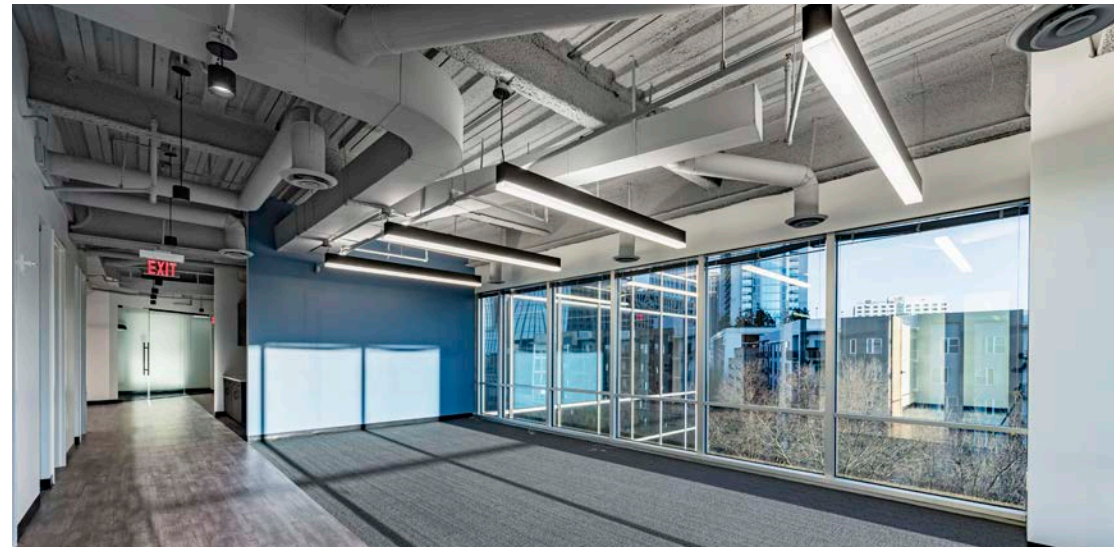
Customizable Office Spaces to Suit Every Business Scale

We recognize that your workspace is a reflection of your business's identity and ambition. That's why we offer a diverse portfolio of office spaces, each designed to respond to your specific needs. Whether you are a start-up with a dynamic team or an established corporation seeking expansion, our range of move-in ready spec suites and large big block options cater to your requirements. With flexible square footage solutions at your disposal, we ensure that whether your team is growing or you are streamlining operations, your physical space adapts seamlessly.

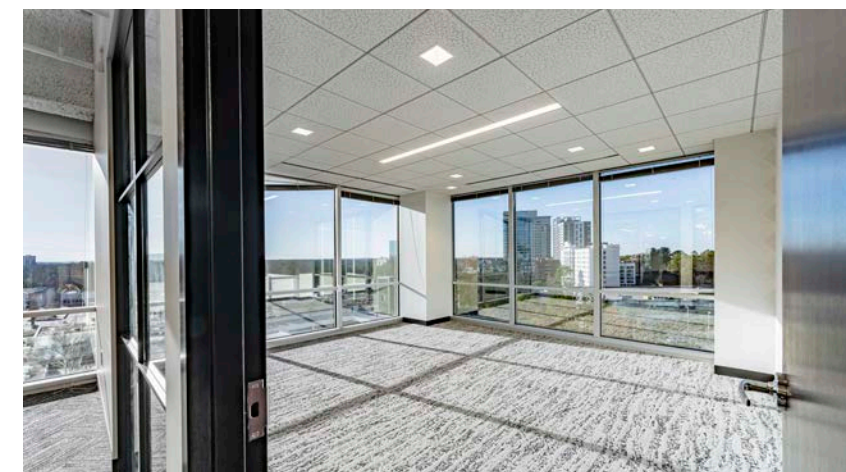
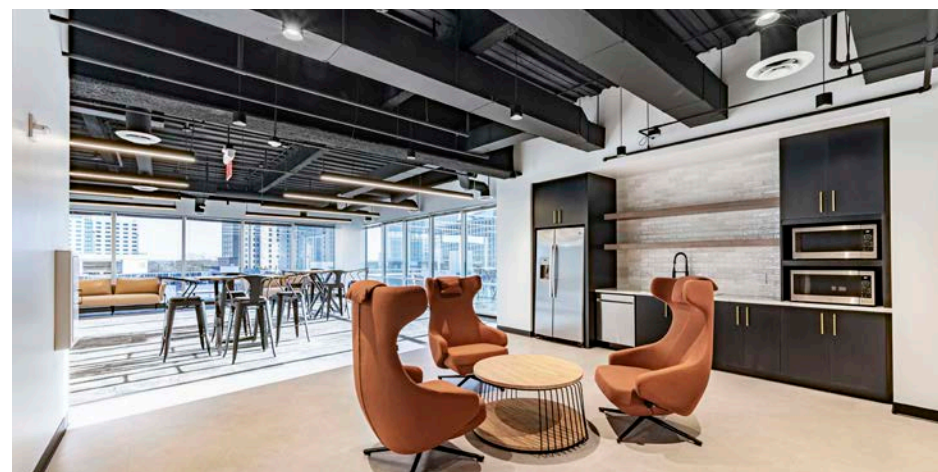
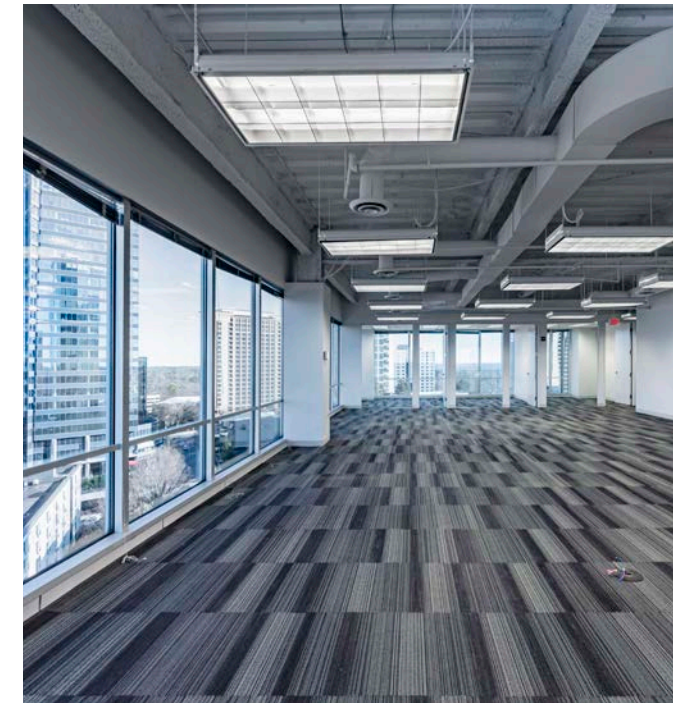
Offering both move-in ready options that shortcut the process from conception to operation, allowing you to leap into productivity with unfaltering speed as well as large big block spaces that present a blank slate for your corporate vision, offering the freedom to design layouts that resonate with your culture and operational style.



Big Block up to 124,000+ SF



Spec Suites ranging from 2,000 SF - 20,744 SF



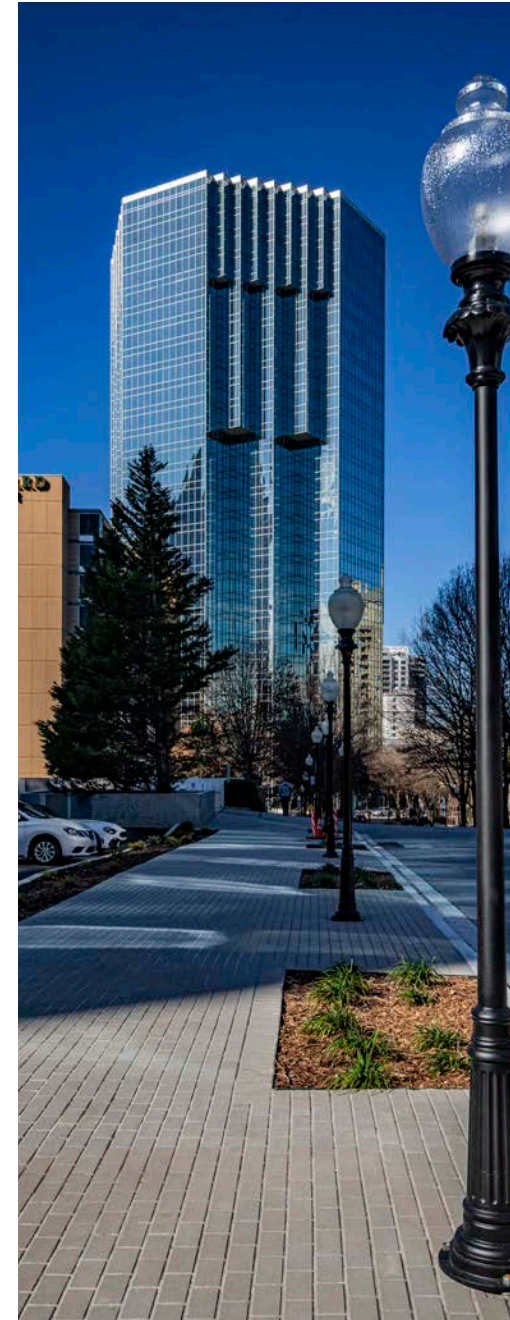
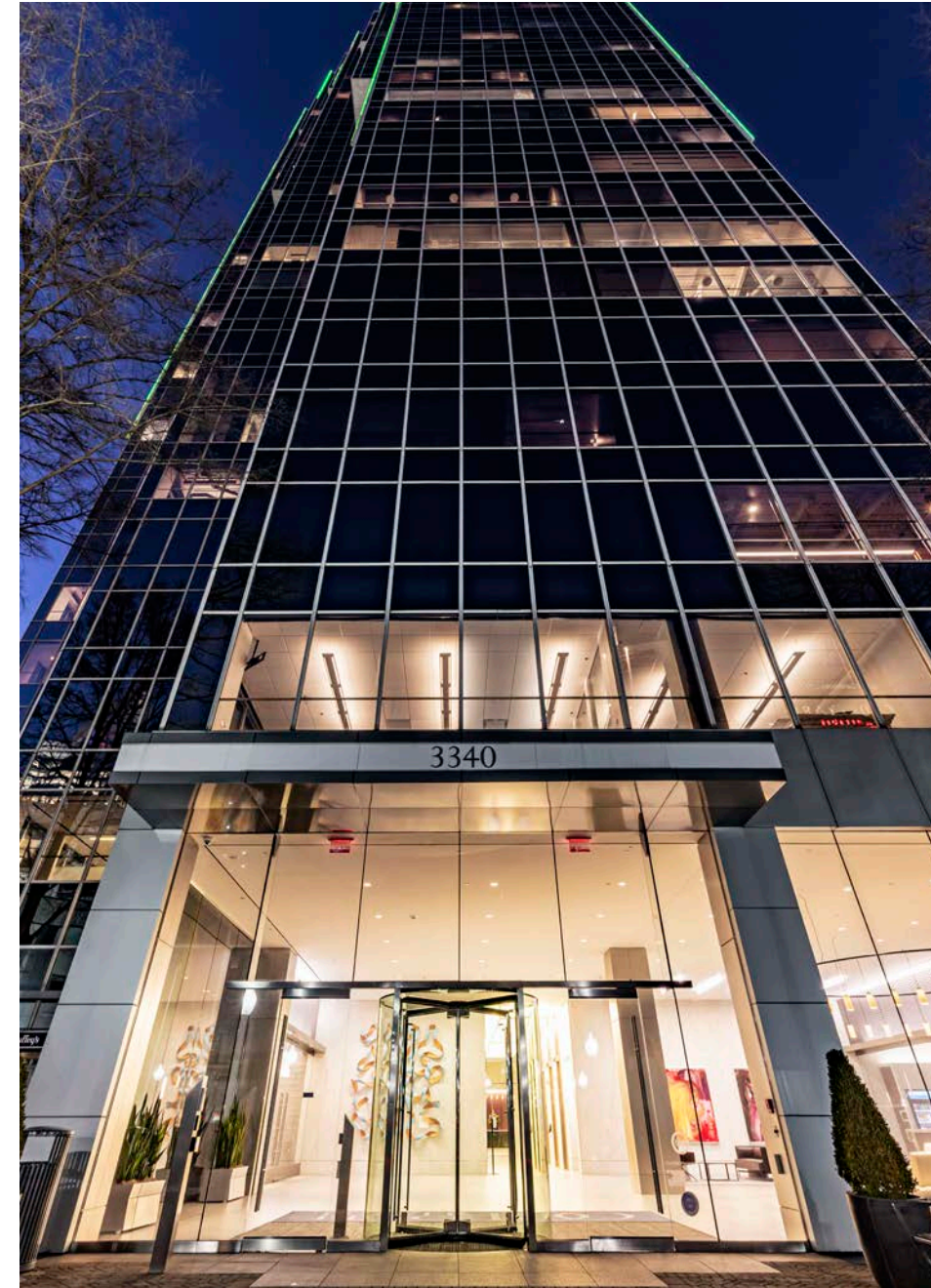
ESG COMMITMENT

A Beacon of Sustainability and Community: Our ESG Commitment

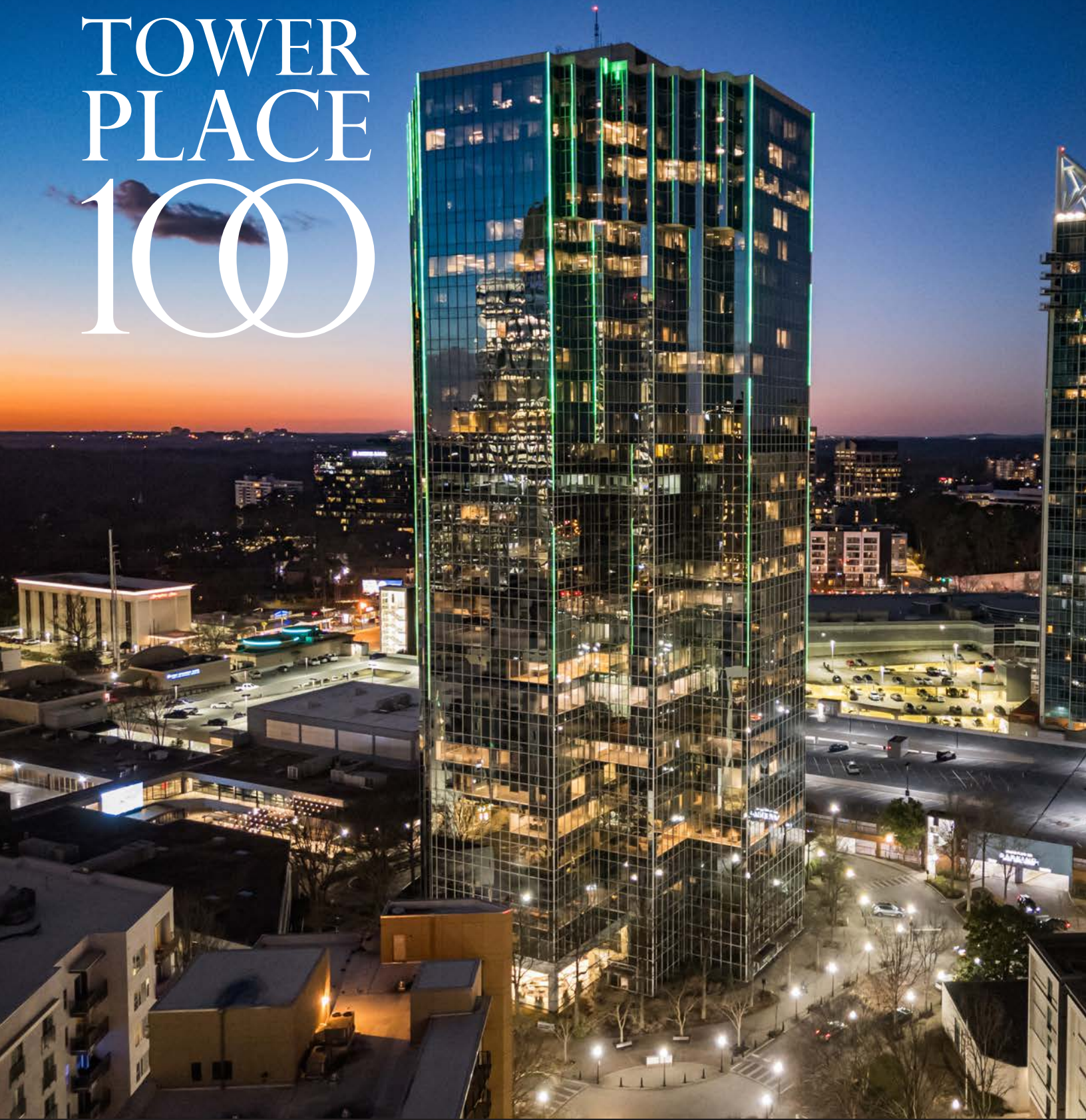
Tower Place 100 stands as a testament to enduring values that embrace environmental, social, and governance (ESG) principles. We are firmly committed to sustainability and responsibility in all facets of our operations.

We are proud to announce that Tower Place 100 has been distinguished with the esteemed USGBC LEED GOLD certification, WELL building standard acknowledgment, and the Energy Star label, a triad of honors that highlight our steadfast commitment to sustainability and well-being.

These prestigious accolades are more than just awards — they reflect our commitment to a sustainable future, one which we share with our tenants and the wider community.



TOWER PLACE 100



Hunter Henritze
hhenritze@lpc.com
404.924.2819

Alex Port
aport@lpc.com
404.924.2816

Maia Perri
mperri@lpc.com
404.924.2814

Lincoln