

FOR LEASE

291 US HIGHWAY 22 EAST
READINGTON TOWNSHIP, NJ

WAREHOUSE / ASSEMBLY / OFFICE FLEX UNITS AVAILABLE

AVAILABLE SPACES

Building 8: +/- 9000 sf

- Includes +/- 3000 sf of 20' ceiling ht warehouse space with tailboard loading, private restroom and doors connecting to assembly/office space
- +/- 6000 sf of assembly/office space with HVAC throughout, private restrooms
- Parking with direct access to space

Rental Rate: \$14.50/psf NNN (\$3/psf)

Building 1: +/- 3000 sf

- Tailboard loading
- Office space and 2 private restrooms
- HVAC throughout

Rental Rate: \$12.50/psf NNN (\$3/psf)

PROPERTY FEATURES

- Salem Industrial Park
- Direct access from/to Route 22
- Abundant parking
- Zoning ROM1—Permitted uses include: flex/light industrial, product assembly, wholesaling, research, testing and analytical laboratories, professional, administrative and business offices
- 24 Hour access

For more information contact:

DEBORAH MYERS

C: 973.493.8508

O: 973.884.4444 ext. 15

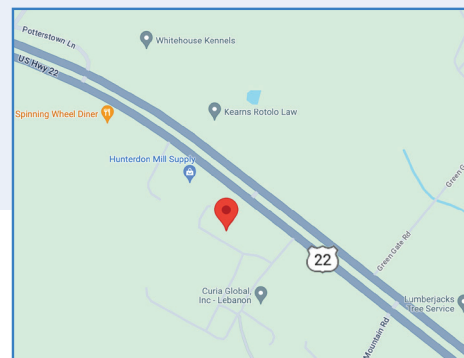
dmyers@newmarkrealestate.com

MICHAEL TACCETTA

C: 973.525.3737

O: 973.884.4444 ext. 27

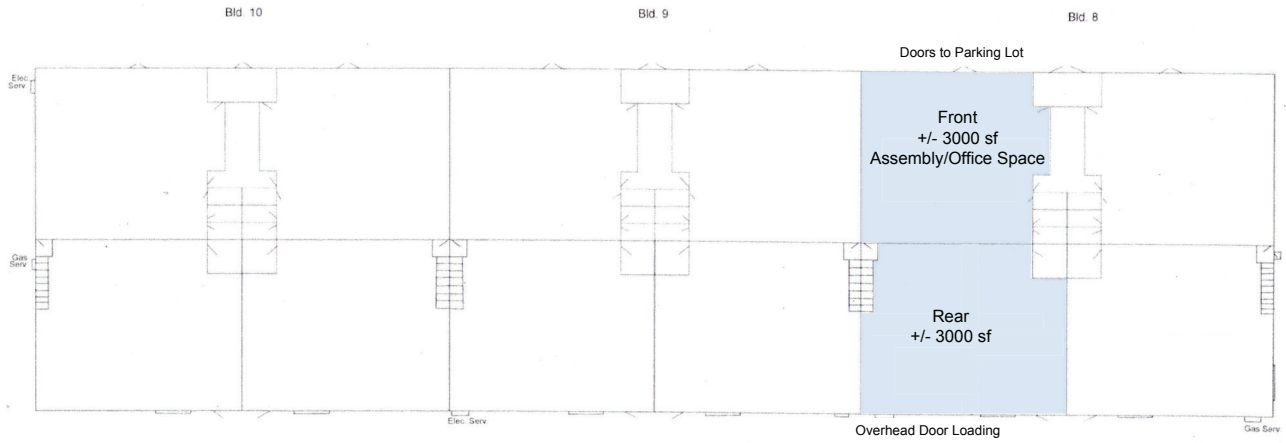
mtaccetta@newmarkrealestate.com



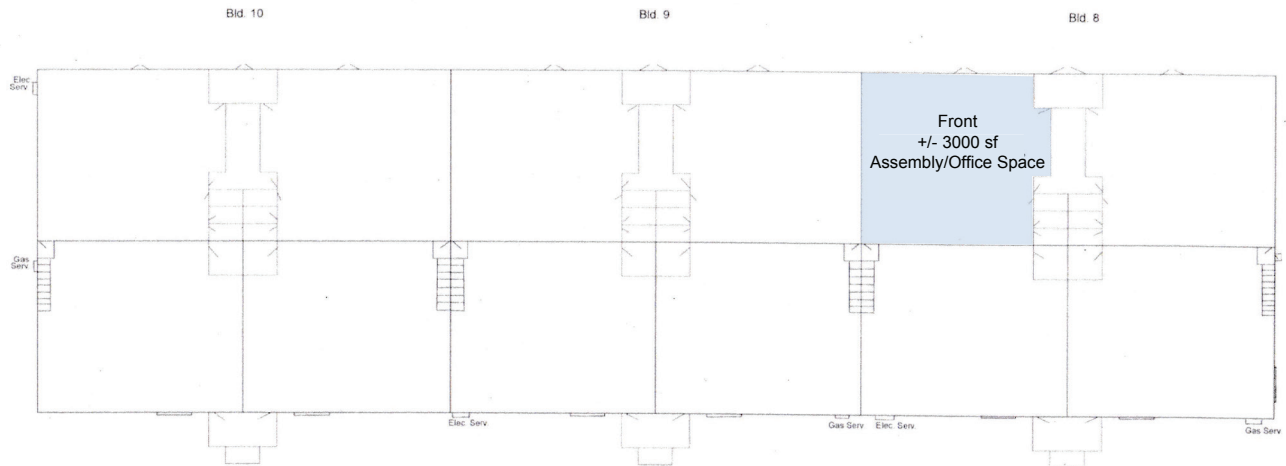
NewmarkRealEstate.com | 973.884.4444 | 7 E. Frederick Place Suite 500 Cedar Knolls New Jersey 07927

2025 Newmark Associates CRE. Information obtained from sources deemed to be reliable. However, no guarantee, warrant or representation is made as to accuracy of the information presented which is submitted subject to errors, omission, change of price, rental or other conditions, prior sale lease, financing or withdrawal without notice. Projections, opinions, assumptions or estimates are provided for example only, and may not represent current or future performance. Interested parties should consult their tax and legal advisors and conduct a thorough investigation of the property and any prospective transaction.

Building 8, 1st Floor



Building 8, 2nd Floor



Floor Plans Not Drawn to Scale.

Building 8
+/- 9000 sf Available



Building 1
+/- 3000 sf Available

