



## 883 Highway 210

883 Highway 210, Sneads Ferry, NC 28460



**Matt Ray**

Ray Properties, Inc.

3684-C Henderson Drive, Jacksonville, NC 28546

[matt@rayproperties.com](mailto:matt@rayproperties.com)

(910) 388-6620

License: 266827

## 883 Highway 210

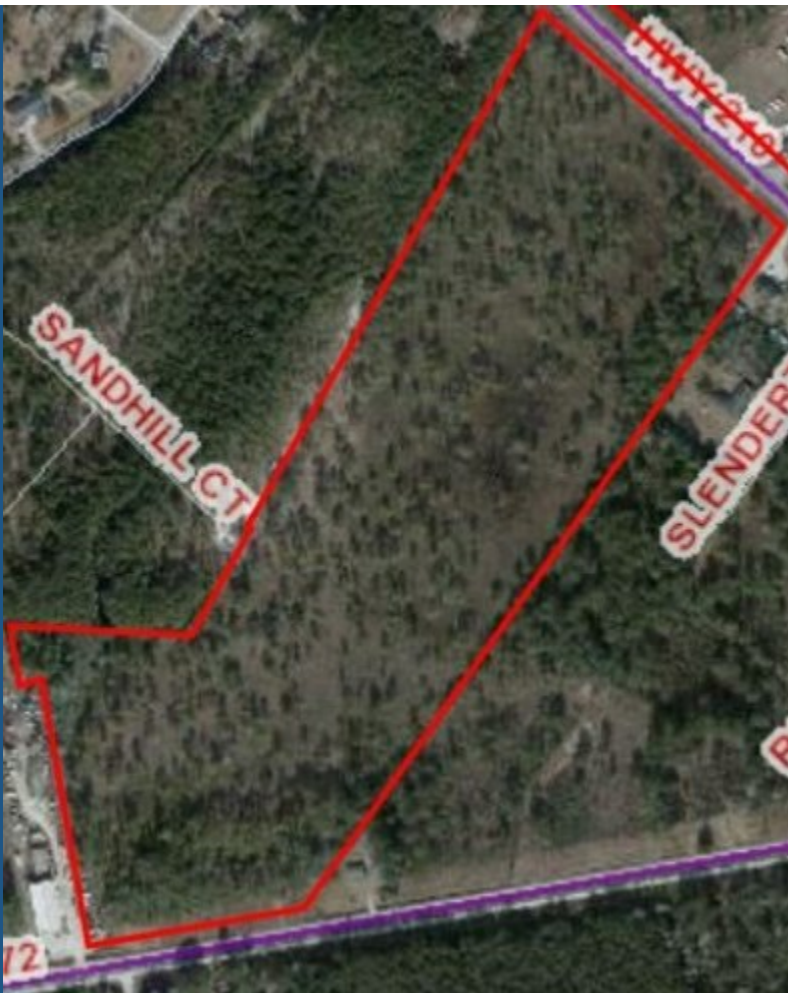
\$2,400,000

This sale offering includes +/- 22 acres of vacant land, zoned for Highway Business. Property has road frontage and access from Highway 210 and Highway 172.

- Highway Access
- Close to Military Base
- High Traffic Volume

For more information visit:

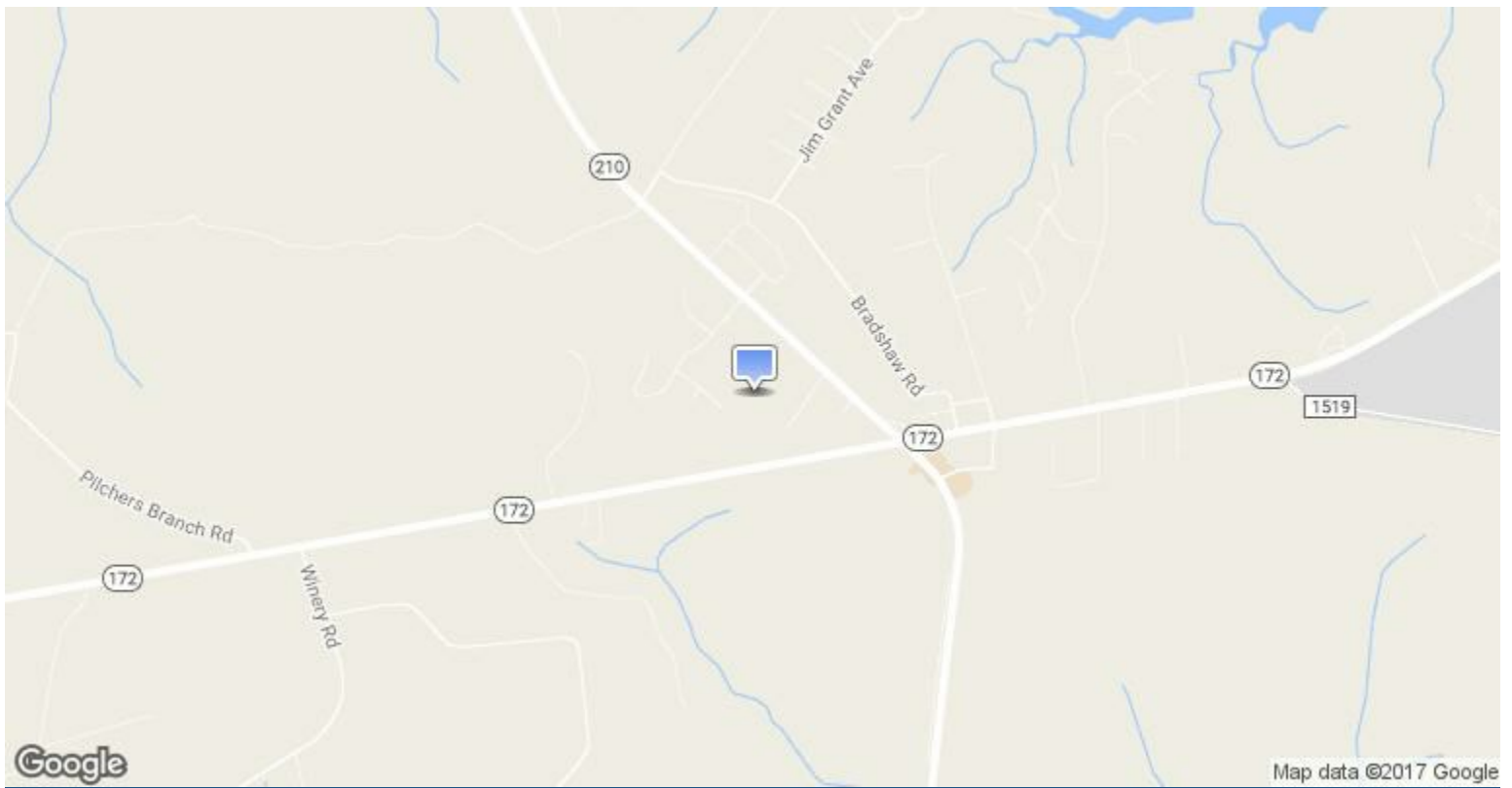
<http://www.crelisting.net/Ytr20p61A/?StepID=107>



Price:	\$2,400,000
Property Type:	Land
Property Sub-type:	Commercial/Other (land)
Property Use Type:	Vacant/Owner-User
Zoning Description:	Highway Business

**\$2,400,000**

Lot Size	22 AC
Price/AC	\$109,090.91
Lot Type	Commercial/Other (land)
Commission Split	3.5%



## 883 Highway 210, Sneads Ferry, NC 28460

Located near the busy NC 210 and 172 Highways intersections, in Sneads Ferry, NC. Also in close proximity to several residential developments.

# Demographics

<b>Population</b>	<b>1-mi.</b>	<b>3-mi.</b>	<b>5-mi.</b>
2015 Male Population	n/a	4,187	5,723
2015 Female Population	n/a	3,763	5,178
% 2015 Male Population	0.00%	52.67%	52.50%
% 2015 Female Population	0.00%	47.33%	47.50%
2015 Total Population: Adult	n/a	6,250	8,604
2015 Total Daytime Population	n/a	6,655	8,475
2015 Total Employees	n/a	1,897	2,142
2015 Total Population: Median Age	n/a	36	35
2015 Total Population: Adult Median Age	n/a	46	45
2015 Total population: Under 5 years	n/a	649	903
2015 Total population: 5 to 9 years	n/a	422	582
2015 Total population: 10 to 14 years	n/a	423	541
2015 Total population: 15 to 19 years	n/a	396	508
2015 Total population: 20 to 24 years	n/a	679	1,015
2015 Total population: 25 to 29 years	n/a	762	1,082
2015 Total population: 30 to 34 years	n/a	595	820
2015 Total population: 35 to 39 years	n/a	423	579
2015 Total population: 40 to 44 years	n/a	471	639
2015 Total population: 45 to 49 years	n/a	428	575
2015 Total population: 50 to 54 years	n/a	462	630
2015 Total population: 55 to 59 years	n/a	481	649
2015 Total population: 60 to 64 years	n/a	497	657
2015 Total population: 65 to 69 years	n/a	525	655
2015 Total population: 70 to 74 years	n/a	321	457
2015 Total population: 75 to 79 years	n/a	209	303
2015 Total population: 80 to 84 years	n/a	132	195
2015 Total population: 85 years and over	n/a	75	111
% 2015 Total population: Under 5 years	0.00%	8.16%	8.28%
% 2015 Total population: 5 to 9 years	0.00%	5.31%	5.34%
% 2015 Total population: 10 to 14 years	0.00%	5.32%	4.96%
% 2015 Total population: 15 to 19 years	0.00%	4.98%	4.66%
% 2015 Total population: 20 to 24 years	0.00%	8.54%	9.31%
% 2015 Total population: 25 to 29 years	0.00%	9.58%	9.93%
% 2015 Total population: 30 to 34 years	0.00%	7.48%	7.52%
% 2015 Total population: 35 to 39 years	0.00%	5.32%	5.31%
% 2015 Total population: 40 to 44 years	0.00%	5.92%	5.86%
% 2015 Total population: 45 to 49 years	0.00%	5.38%	5.27%
% 2015 Total population: 50 to 54 years	0.00%	5.81%	5.78%
% 2015 Total population: 55 to 59 years	0.00%	6.05%	5.95%
% 2015 Total population: 60 to 64 years	0.00%	6.25%	6.03%
% 2015 Total population: 65 to 69 years	0.00%	6.60%	6.01%
% 2015 Total population: 70 to 74 years	0.00%	4.04%	4.19%
% 2015 Total population: 75 to 79 years	0.00%	2.63%	2.78%

# Demographics

## Population (Cont.)

	1-mi.	3-mi.	5-mi.
% 2015 Total population: 80 to 84 years	0.00%	1.66%	1.79%
% 2015 Total population: 85 years and over	0.00%	0.94%	1.02%
2015 White alone	n/a	7,264	9,996
2015 Black or African American alone	n/a	232	319
2015 American Indian and Alaska Native alone	n/a	72	82
2015 Asian alone	n/a	74	98
2015 Native Hawaiian and OPI alone	n/a	2	4
2015 Some Other Race alone	n/a	89	121
2015 Two or More Races alone	n/a	217	281
2015 Hispanic	n/a	352	500
2015 Not Hispanic	n/a	7,598	10,401
% 2015 White alone	0.00%	91.37%	91.70%
% 2015 Black or African American alone	0.00%	2.92%	2.93%
% 2015 American Indian and Alaska Native alone	0.00%	0.91%	0.75%
% 2015 Asian alone	0.00%	0.93%	0.90%
% 2015 Native Hawaiian and OPI alone	0.00%	0.03%	0.04%
% 2015 Some Other Race alone	0.00%	1.12%	1.11%
% 2015 Two or More Races alone	0.00%	2.73%	2.58%
% 2015 Hispanic	0.00%	4.43%	4.59%
% 2015 Not Hispanic	0.00%	95.57%	95.41%
2015 Not Hispanic: White alone	n/a	3,310	5,512
2015 Not Hispanic: Black or African American alone	n/a	135	214
2015 Not Hispanic: American Indian and Alaska Native alone	n/a	16	29
2015 Not Hispanic: Asian alone	n/a	21	43
2015 Not Hispanic: Native Hawaiian and OPI alone	n/a	1	3
2015 Not Hispanic: Some Other Race alone	n/a	6	7
2015 Not Hispanic: Two or More Races	n/a	48	76
% 2015 Not Hispanic: White alone	0.00%	91.61%	92.07%
% 2015 Not Hispanic: Black or African American alone	0.00%	3.74%	3.57%
% 2015 Not Hispanic: American Indian and Alaska Native alone	0.00%	0.44%	0.48%
% 2015 Not Hispanic: Asian alone	0.00%	0.58%	0.72%
% 2015 Not Hispanic: Native Hawaiian and OPI alone	0.00%	0.03%	0.05%
% 2015 Not Hispanic: Some Other Race alone	0.00%	0.17%	0.12%
% 2015 Not Hispanic: Two or More Races	0.00%	1.33%	1.27%

## Population Change

	1-mi.	3-mi.	5-mi.
Total: Employees (NAICS)	n/a	n/a	n/a
Total: Establishments (NAICS)	n/a	n/a	n/a
2015 Total Population	n/a	7,950	10,901
2015 Households	n/a	3,262	4,562

# Demographics

## Population Change (Cont.)

	1-mi.	3-mi.	5-mi.
Population Change 2010-2015	n/a	2,304	2,217
Household Change 2010-2015	n/a	1,006	1,006
% Population Change 2010-2015	0.00%	40.81%	25.53%
% Household Change 2010-2015	0.00%	44.59%	28.29%
Population Change 2000-2015	n/a	4,337	4,914
Household Change 2000-2015	n/a	1,841	2,137
% Population Change 2000 to 2015	0.00%	120.04%	82.08%
% Household Change 2000 to 2015	0.00%	129.56%	88.12%

## Housing

	1-mi.	3-mi.	5-mi.
2015 Housing Units	n/a	1,775	3,156
2015 Occupied Housing Units	n/a	1,421	2,425
2015 Owner Occupied Housing Units	n/a	1,131	1,885
2015 Renter Occupied Housing Units	n/a	290	540
2015 Vacant Housings Units	n/a	354	731
% 2015 Occupied Housing Units	0.00%	80.06%	76.84%
% 2015 Owner occupied housing units	0.00%	79.59%	77.73%
% 2015 Renter occupied housing units	0.00%	20.41%	22.27%
% 2000 Vacant housing units	0.00%	19.94%	23.16%

## Income

	1-mi.	3-mi.	5-mi.
2015 Household Income: Median	n/a	\$51,393	\$49,422
2015 Household Income: Average	n/a	\$61,935	\$61,720
2015 Per Capita Income	n/a	\$25,413	\$25,830
2015 Household income: Less than \$10,000	n/a	228	327
2015 Household income: \$10,000 to \$14,999	n/a	172	220
2015 Household income: \$15,000 to \$19,999	n/a	196	290
2015 Household income: \$20,000 to \$24,999	n/a	165	227
2015 Household income: \$25,000 to \$29,999	n/a	159	216
2015 Household income: \$30,000 to \$34,999	n/a	269	401
2015 Household income: \$35,000 to \$39,999	n/a	101	171
2015 Household income: \$40,000 to \$44,999	n/a	159	245
2015 Household income: \$45,000 to \$49,999	n/a	130	208
2015 Household income: \$50,000 to \$59,999	n/a	373	484
2015 Household income: \$60,000 to \$74,999	n/a	440	553
2015 Household income: \$75,000 to \$99,999	n/a	406	561
2015 Household income: \$100,000 to \$124,999	n/a	156	235
2015 Household income: \$125,000 to \$149,999	n/a	102	132
2015 Household income: \$150,000 to \$199,999	n/a	158	220
2015 Household income: \$200,000 or more	n/a	48	72
% 2015 Household income: Less than \$10,000	0.00%	6.99%	7.17%
% 2015 Household income: \$10,000 to \$14,999	0.00%	5.27%	4.82%

# Demographics

## Income (Cont.)

	1-mi.	3-mi.	5-mi.
% 2015 Household income: \$15,000 to \$19,999	0.00%	6.01%	6.36%
% 2015 Household income: \$20,000 to \$24,999	0.00%	5.06%	4.98%
% 2015 Household income: \$25,000 to \$29,999	0.00%	4.87%	4.73%
% 2015 Household income: \$30,000 to \$34,999	0.00%	8.25%	8.79%
% 2015 Household income: \$35,000 to \$39,999	0.00%	3.10%	3.75%
% 2015 Household income: \$40,000 to \$44,999	0.00%	4.87%	5.37%
% 2015 Household income: \$45,000 to \$49,999	0.00%	3.99%	4.56%
% 2015 Household income: \$50,000 to \$59,999	0.00%	11.43%	10.61%
% 2015 Household income: \$60,000 to \$74,999	0.00%	13.49%	12.12%
% 2015 Household income: \$75,000 to \$99,999	0.00%	12.45%	12.30%
% 2015 Household income: \$100,000 to \$124,999	0.00%	4.78%	5.15%
% 2015 Household income: \$125,000 to \$149,999	0.00%	3.13%	2.89%
% 2015 Household income: \$150,000 to \$199,999	0.00%	4.84%	4.82%
% 2015 Household income: \$200,000 or more	0.00%	1.47%	1.58%

## Retail Sales Volume

	1-mi.	3-mi.	5-mi.
2015 Childrens/Infants clothing stores	n/a	\$862,027	\$1,207,457
2015 Jewelry stores	n/a	\$322,778	\$449,851
2015 Mens clothing stores	n/a	\$1,028,468	\$1,434,923
2015 Shoe stores	n/a	\$1,034,035	\$1,444,093
2015 Womens clothing stores	n/a	\$1,786,322	\$2,493,121
2015 Automobile dealers	n/a	\$13,904,537	\$19,431,093
2015 Automotive parts and accessories stores	n/a	\$2,751,704	\$3,838,611
2015 Other motor vehicle dealers	n/a	\$404,286	\$563,577
2015 Tire dealers	n/a	\$1,225,278	\$1,710,046
2015 Hardware stores	n/a	\$58,593	\$81,096
2015 Home centers	n/a	\$587,127	\$816,917
2015 Nursery and garden centers	n/a	\$705,442	\$985,111
2015 Outdoor power equipment stores	n/a	\$326,045	\$455,535
2015 Paint andwallpaper stores	n/a	\$68,646	\$95,187
2015 Appliance, television, and other electronics stores	n/a	\$1,895,201	\$2,642,718
2015 Camera andphotographic supplies stores	n/a	\$142,075	\$198,747
2015 Computer andsoftware stores	n/a	\$5,121,098	\$7,148,840
2015 Beer, wine, and liquor stores	n/a	\$882,567	\$1,231,346
2015 Convenience stores	n/a	\$3,879,568	\$5,416,744
2015 Restaurant Expenditures	n/a	\$3,663,404	\$5,114,203
2015 Supermarkets and other grocery (except convenience) stores	n/a	\$14,444,003	\$20,173,310
2015 Furniture stores	n/a	\$1,317,519	\$1,836,988
2015 Home furnishings stores	n/a	\$4,674,644	\$6,519,825
2015 General merchandise stores	n/a	\$24,235,836	\$33,826,660
2015 Gasoline stations with convenience stores	n/a	\$12,371,031	\$17,268,621
2015 Other gasoline stations	n/a	\$8,944,808	\$12,484,943
2015 Department stores (excl leased depts)	n/a	\$23,913,058	\$33,376,809
2015 General merchandise stores	n/a	\$24,235,836	\$33,826,660
2015 Other health and personal care stores	n/a	\$944,417	\$1,318,452



# Demographics

## Retail Sales Volume (Cont.)

	1-mi.	3-mi.	5-mi.
2015 Pharmacies and drug stores	n/a	\$3,813,355	\$5,322,619
2015 Pet and pet supplies stores	n/a	\$1,043,664	\$1,454,169
2015 Book, periodical, and music stores	n/a	\$158,475	\$221,236
2015 Hobby, toy, and game stores	n/a	\$445,030	\$620,189
2015 Musical instrument and supplies stores	n/a	\$44,815	\$62,389
2015 Sewing, needlework, and piece goods stores	n/a	\$86,057	\$119,447
2015 Sporting goods stores	n/a	\$419,888	\$587,780