

MEDIA PARK

SANTA
MONICA

FOR LEASE

1,998 - 8,992 SF IN THE HEART OF SANTA MONICA

AVISON
YOUNG

adison
DADTNIEDC



AVAILABILITY

1,998 – 8,992 RSF

TERM

3–10 years

RENT **REDUCED RATE!** ~~\$2.95~~ \$2.50 /per SF / NNN

PARKING

3 / 1,000 RSF
\$225 Per Month Reserved
\$175 Per Month Unreserved
\$350 Per Month Tandem Reserved

THE IDEAL **CAMPUS** ENVIRONMENT



Low density building
and campus-style
environment



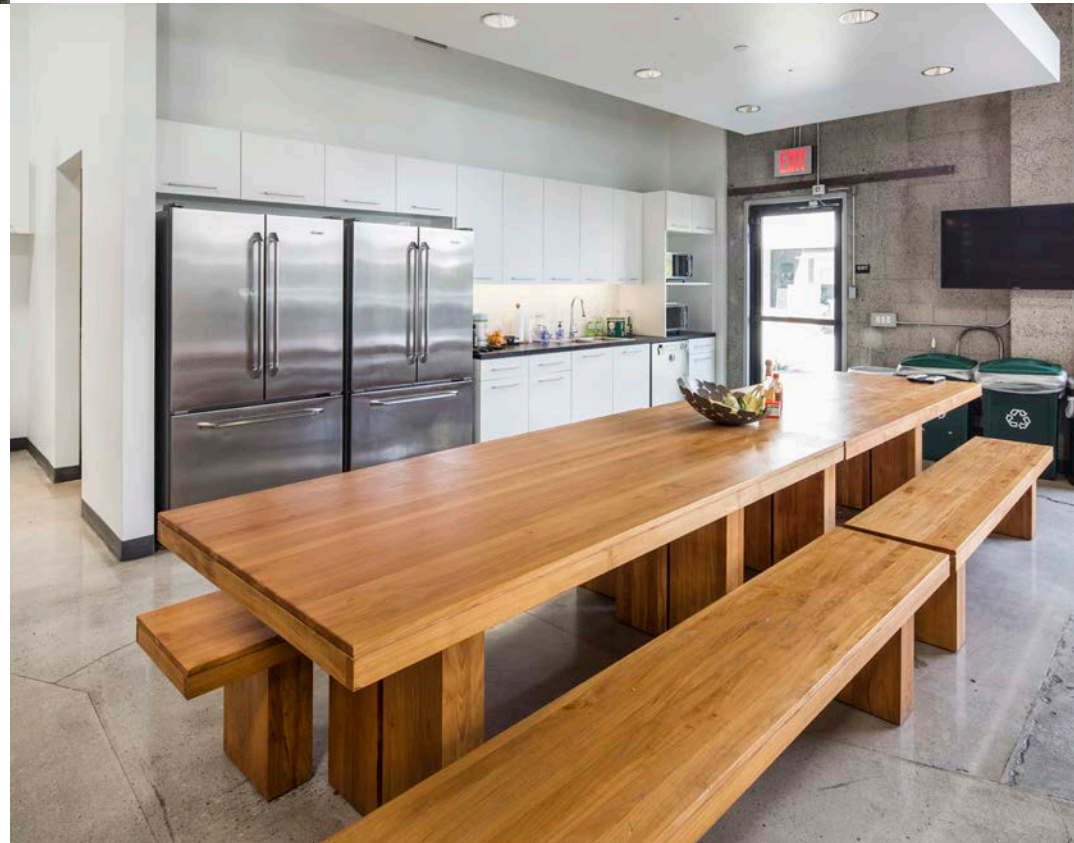
Private patios
and outdoor
areas for each suite



Reserved, open-air
parking spaces directly
in front of suite



Spacious layouts and
a great mix of private
offices and open plans





AT THE **CENTER** OF IT ALL

	1815C CENTINELA	1845 CENTINELA	3220A NEBRASKA	3226 NEBRASKA
NET RENTABLE AREA	4,029 RSF	8,992 RSF	1,998 RSF	3,135 RSF
SPACE FEATURES	High Ceilings Large Open Area Private Offices Kitchen Area Concrete Floors Private Restroom	20' High Ceilings in Some Areas Private Offices and Open Area Beautiful Kitchen with Outdoor Patio Skylights Throughout Stage/ Screening Room	Two-Floor Design Fully Furnished 5 Private Offices High Ceilings Skylights 2 Private Restrooms Private Patio	Two-Floor Design 5 Private Offices High Ceilings Skylights 2 Private Restrooms Private Patio

TOTAL 4,029 SF

High end creative space with high ceilings and a mix of open plan and private offices

SECOND FLOOR



GROUND FLOOR

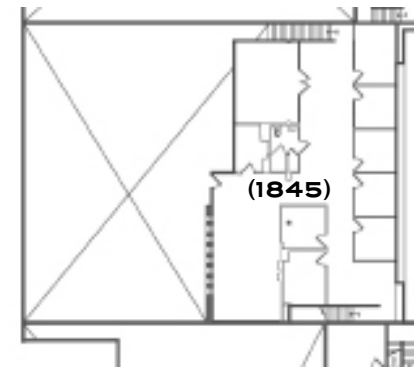




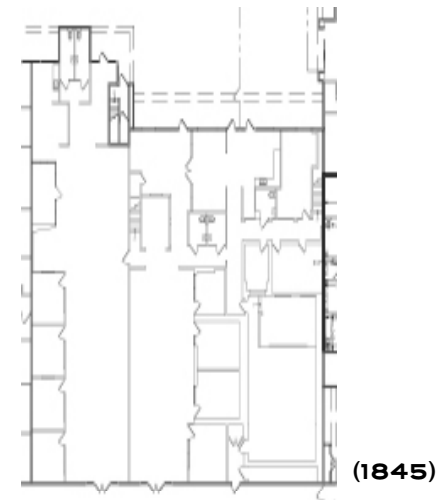
TOTAL 8,992 SF

Production Space with Numerous Edit Bays,
Stage/Screening Room with 20' Ceilings and Private Patio

SECOND FLOOR



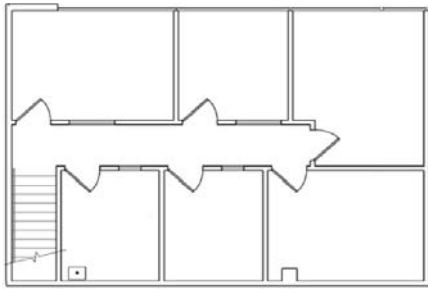
GROUND FLOOR



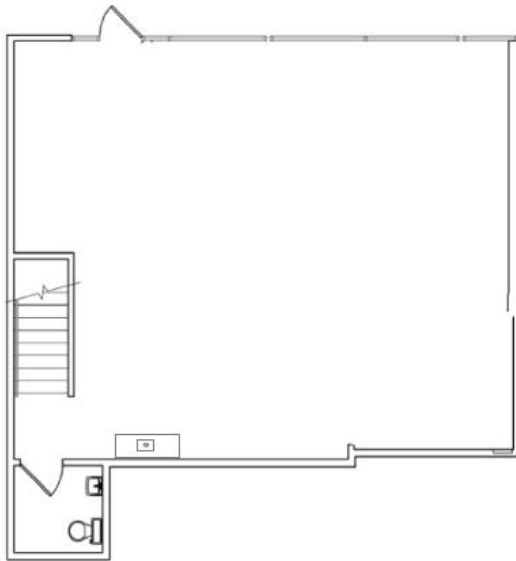
TOTAL 1,998 SF

Two-Floors, 5 Private Offices, High Ceilings,
Private Patio, Skylight, 2 Private Restrooms

SECOND FLOOR



GROUND FLOOR

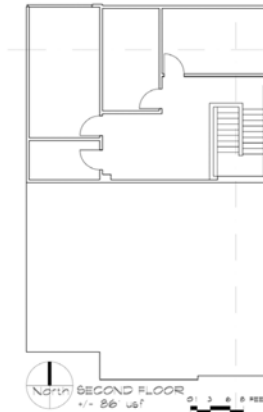




TOTAL 3,135 SF

5 Offices, Conference Room, Kitchen, and Open Area

SECOND FLOOR



GROUND FLOOR



MEDIA PARK

SANTA MONICA

FOR MORE INFORMATION:

MITCH STOKES

310.780.6909

mitch.stokes@avisonyoung.com

License No. 01037526

JOE KING

310.442.3375

jking@madisonpartners.net

License No. 01195833

**AVISON
YOUNG**

**madison
PARTNERS**

©2025 Madison Partners. DRE License Number 00978067. The information above has been obtained from sources believed reliable. While we do not doubt its accuracy, we have not verified it and make no guarantee, warranty or representation about it. It is your responsibility to independently confirm its accuracy and completeness. Any projections, opinions, assumptions, or estimates used are for example only and do not represent the current or future performance of the property. The value of this transaction to you depends on tax and other factors which should be evaluated by your tax, financial and legal advisors. You and your advisors should conduct a careful, independent investigation of the property to determine to your satisfaction the suitability of the property for your needs. Updated 02.06.23.23