

1705

N 16TH STREET
TAMPA, FLORIDA

Between East 6th Avenue &
East 7th Avenue

**CORNER RETAIL
ADJACENT GASWORX**

PROPERTY INFORMATION



MILES AT YBOR

Ground Floor Retail Gym Opportunity at the base of innovative mixed-use development

APPROXIMATE SIZE

Ground Floor: 4,064 SF
(Tenant 02 on Floorplan)

FRONTAGE

60' on 16th Street
150' on 6th East 6th Avenue

COMMENTS

- Located in the heart of Tampa's historic Ybor City
- Three-story office expansion and 5-story residential component
- 120 fully furnished, all-inclusive micro units
- Neighboring businesses/ developments: Tampa Bay Pickle Ball Crew, The Hotel Haya, The Florida Museum of Photographic Arts, Sofwerx, Gasworx-50-acre mixed-use development that at build-out will include 5,000 + residences, 140,000 square feet of retail and a million square feet of office space

POSSESSION

Arranged - Q3 2024

ASKING RENT

Upon Request

JPRE
DEVELOPMENT

COOPER ROSARIO

cooperrosario@jpredev.com
352.223.8319

JOSHUA PARDUE

joshpardue@jpredev.com
646.634.0888

CLAIRE CHAPIN

clairechapin@jpredev.com
646.764.3036

PARDUE ADVISORY LLC

This document has been prepared by Pardue Advisory LLC for advertising and general information only and contains information from sources believed reliable but has not been verified for accuracy or completeness. Pardue Advisory LLC makes no guarantees, representations, or warranties of any kind, expressed or implied, regarding the information including, but not limited to, warranties of content, accuracy, and reliability. Any interested party should undertake their own inquiries as to the accuracy of the information. Pardue Advisory LLC excludes unequivocally all inferred or implied terms, conditions and warranties arising out of this document and excludes all liability for loss and damages arising there from.

1705

N 16TH STREET
TAMPA, FLORIDA

Between East 6th Avenue &
East 7th Avenue

**CORNER RETAIL
ADJACENT GASWORX**

PROPERTY RENDERINGS



JPRE
DEVELOPMENT

COOPER ROSARIO
cooperrosario@jpredev.com
352.223.8319

JOSHUA PARDUE
joshpardue@jpredev.com
646.634.0888

CLAIRE CHAPIN
clairechapin@jpredev.com
646.764.3036

PARDUE ADVISORY LLC This document has been prepared by Pardue Advisory LLC for advertising and general information only and contains information from sources believed reliable but has not been verified for accuracy or completeness. Pardue Advisory LLC makes no guarantees, representations, or warranties of any kind, expressed or implied, regarding the information including, but not limited to, warranties of content, accuracy, and reliability. Any interested party should undertake their own inquiries as to the accuracy of the information. Pardue Advisory LLC excludes unequivocally all inferred or implied terms, conditions and warranties arising out of this document and excludes all liability for loss and damages arising there from.

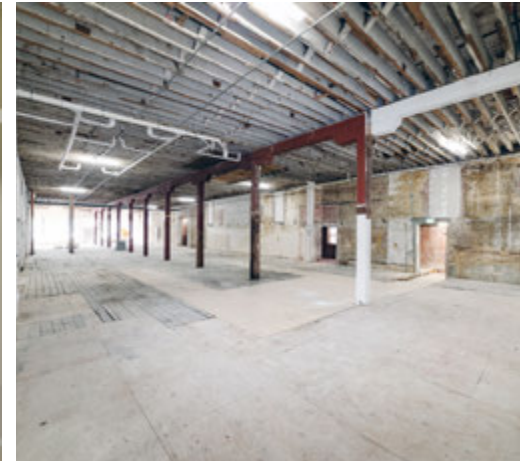
1705

N 16TH STREET
TAMPA, FLORIDA

Between East 6th Avenue &
East 7th Avenue

**CORNER RETAIL
ADJACENT GASWORX**

PROPERTY PHOTOS



JPRE
DEVELOPMENT

COOPER ROSARIO
cooperrosario@jpredev.com
352.223.8319

JOSHUA PARDUE
joshpardue@jpredev.com
646.634.0888

CLAIRE CHAPIN
clairechapin@jpredev.com
646.764.3036

PARDUE ADVISORY LLC This document has been prepared by Pardue Advisory LLC for advertising and general information only and contains information from sources believed reliable but has not been verified for accuracy or completeness. Pardue Advisory LLC makes no guarantees, representations, or warranties of any kind, expressed or implied, regarding the information including, but not limited to, warranties of content, accuracy, and reliability. Any interested party should undertake their own inquiries as to the accuracy of the information. Pardue Advisory LLC excludes unequivocally all inferred or implied terms, conditions and warranties arising out of this document and excludes all liability for loss and damages arising there from.

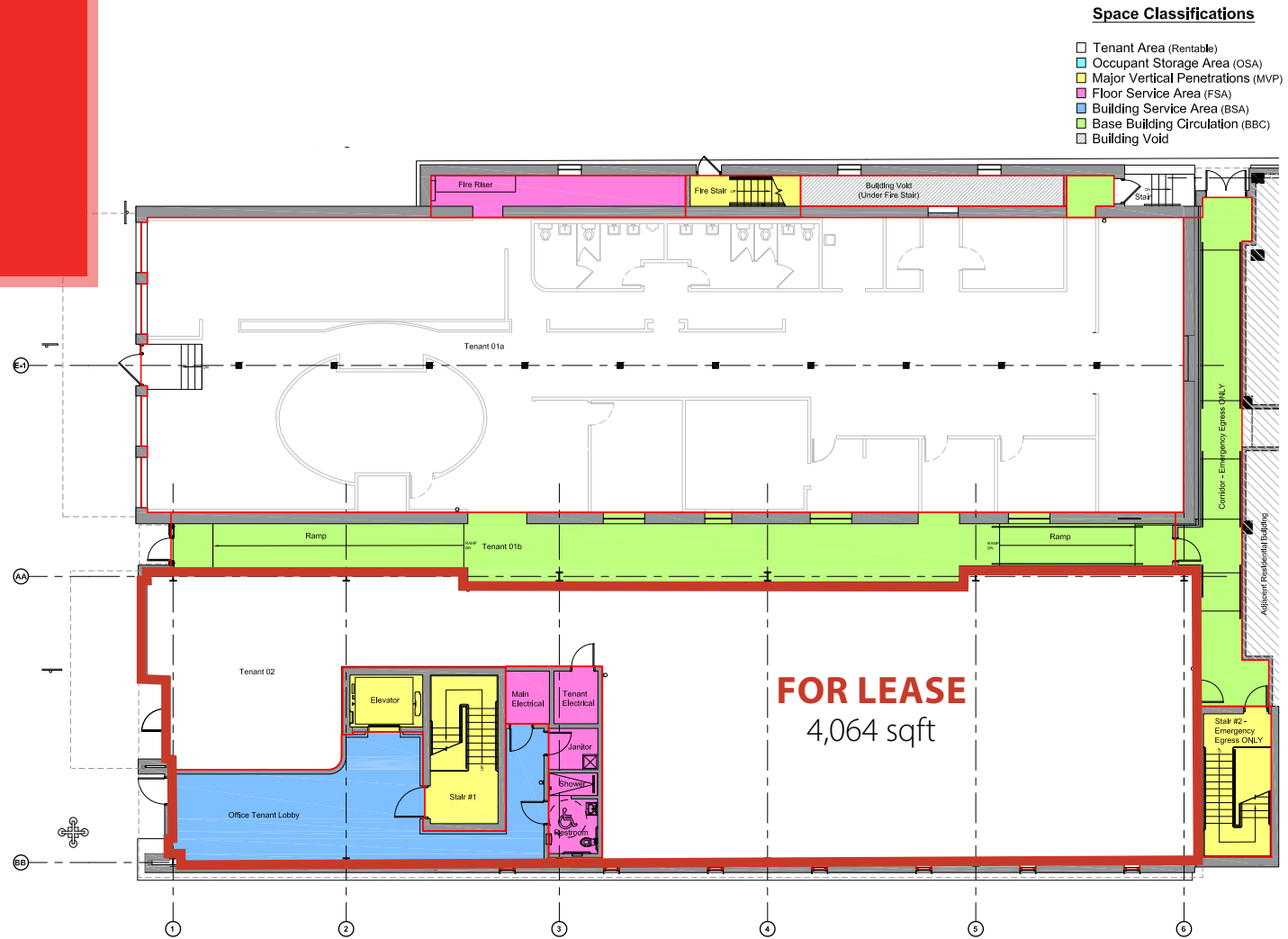
1705

N 16TH STREET TAMPA, FLORIDA

Between East 6th Avenue &
East 7th Avenue

CORNER RETAIL ADJACENT GASWORX

FLOOR PLAN



JPRE
DEVELOPMENT

COOPER ROSARIO
cooperrosario@jpredev.com
352.223.8319

JOSHUA PARDUE
joshpardue@jpredev.com
646.634.0888

CLAIRE CHAPIN
clairechapin@jpredev.com
646.764.3036

PARDUE ADVISORY LLC This document has been prepared by Pardue Advisory LLC for advertising and general information only and contains information from sources believed reliable but has not been verified for accuracy or completeness. Pardue Advisory LLC makes no guarantees, representations, or warranties of any kind, expressed or implied, regarding the information including, but not limited to, warranties of content, accuracy, and reliability. Any interested party should undertake their own inquiries as to the accuracy of the information. Pardue Advisory LLC excludes unequivocally all inferred or implied terms, conditions and warranties arising out of this document and excludes all liability for loss and damages arising there from.

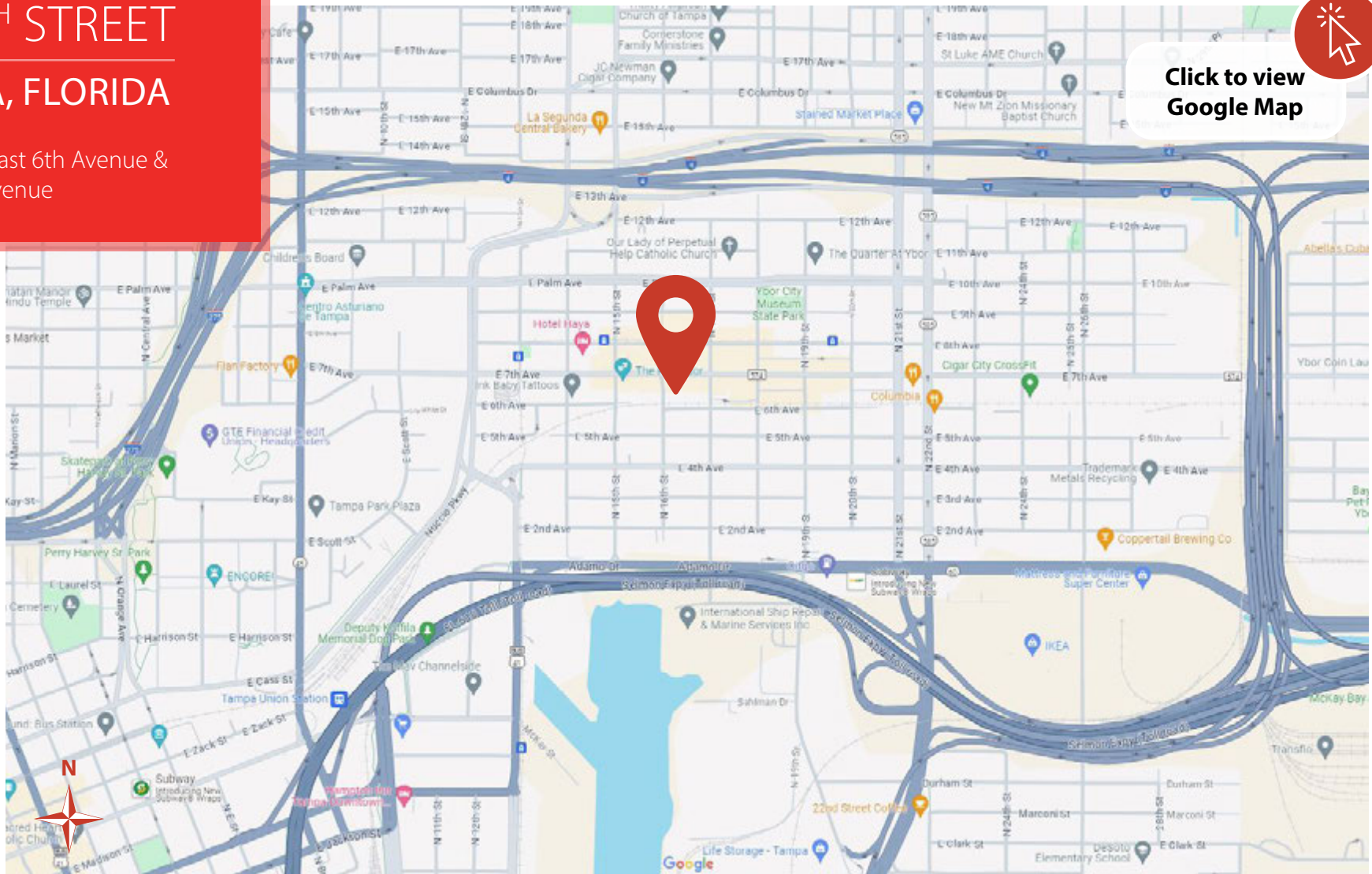
1705

N 16TH STREET TAMPA, FLORIDA

Between East 6th Avenue &
East 7th Avenue

**CORNER RETAIL
ADJACENT GASWORX**

AERIAL MAP



**Click to view
Google Map**

JPRE
DEVELOPMENT

COOPER ROSARIO
cooperrosario@jpredev.com
352.223.8319

JOSHUA PARDUE
joshpardue@jpredev.com
646.634.0888

CLAIRE CHAPIN
clairechapin@jpredev.com
646.764.3036

PARDUE ADVISORY LLC This document has been prepared by Pardue Advisory LLC for advertising and general information only and contains information from sources believed reliable but has not been verified for accuracy or completeness. Pardue Advisory LLC makes no guarantees, representations, or warranties of any kind, expressed or implied, regarding the information including, but not limited to, warranties of content, accuracy, and reliability. Any interested party should undertake their own inquiries as to the accuracy of the information. Pardue Advisory LLC excludes unequivocally all inferred or implied terms, conditions and warranties arising out of this document and excludes all liability for loss and damages arising there from.

1705

N 16TH STREET
TAMPA, FLORIDA

Between East 6th Avenue &
East 7th Avenue

CORNER RETAIL
ADJACENT GASWORX

YBOR



JPRE
DEVELOPMENT

COOPER ROSARIO
cooperosario@jpredev.com
352.223.8319

JOSHUA PARDUE
joshpardue@jpredev.com
646.634.0888

CLAIRE CHAPIN
clairechapin@jpredev.com
646.764.3036

PARDUE ADVISORY LLC This document has been prepared by Pardue Advisory LLC for advertising and general information only and contains information from sources believed reliable but has not been verified for accuracy or completeness. Pardue Advisory LLC makes no guarantees, representations, or warranties of any kind, expressed or implied, regarding the information including, but not limited to, warranties of content, accuracy, and reliability. Any interested party should undertake their own inquiries as to the accuracy of the information. Pardue Advisory LLC excludes unequivocally all inferred or implied terms, conditions and warranties arising out of this document and excludes all liability for loss and damages arising there from.