

1707 N 45th St

Seattle, WA 98103
Office For Lease



SUMMARY

Cannon Commercial is pleased to present an opportunity to lease 2nd floor office space located in the heart of Wallingford. Features 3 private offices, waiting area, and shared restroom. Parking is available at market rate depending on current availability.

VIRTUAL TOUR

Click Below:
<https://my.matterport.com/show/?m=M82uBjjZkUe>

Details

Address:	1701 N 45th St Seattle WA 98103
Lease Rate:	\$1,400/mo
Modified Gross	Utilities, Gas, Electric and WSG
SF:	Approx. 673
Zoning:	NC2P-55 (M)
Construction Class:	Masonry
Year Built:	1925
Eff. Year:	1995
Sprinklers	No
Tax Parcel #:	4083300280



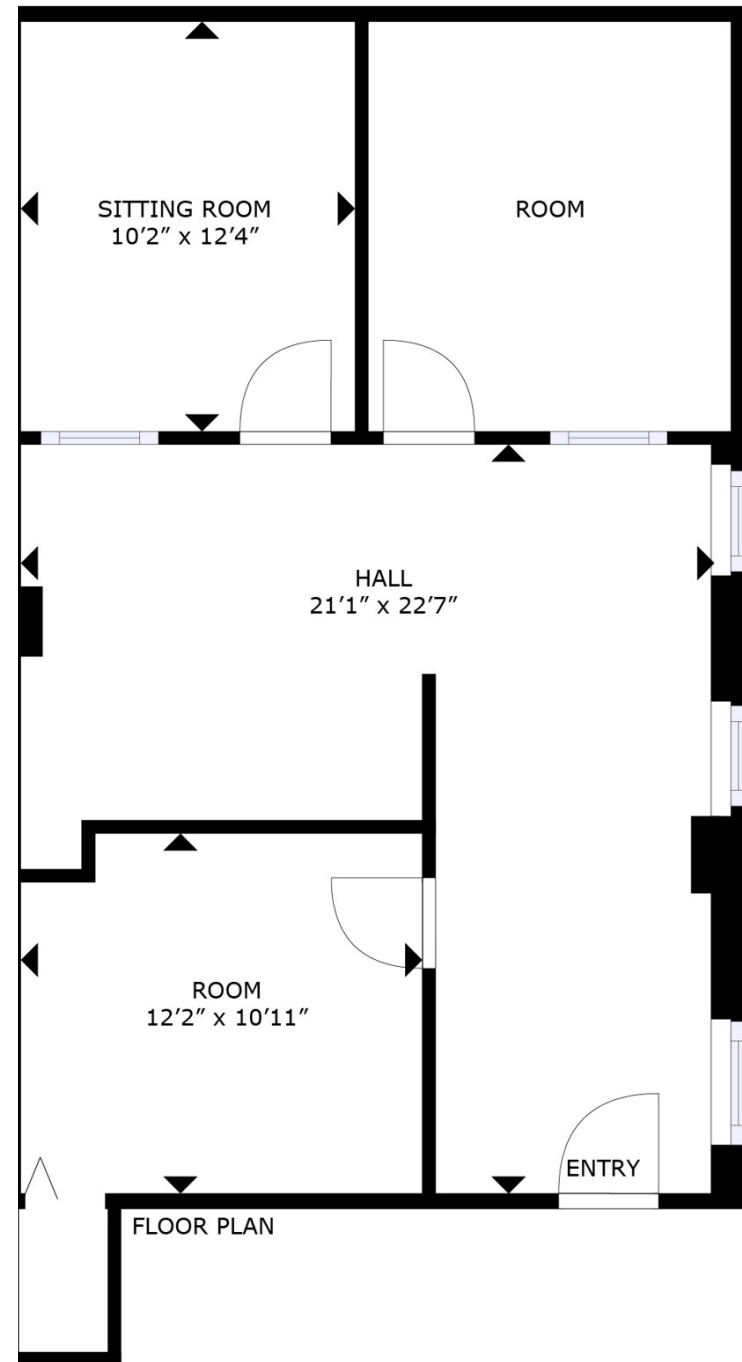
PROPERTY HIGHLIGHTS

96 Walk Score - perfectly positioned within walking distance to many amenities, restaurants and cafes

56 Transit Score - good transit with many nearby public transportation options

98 Bike Score - biker's paradise

Parking available - please inquire





Property Tours

All property tours will be conducted exclusively by Listing Broker and by appointment only. To learn more about this property and to schedule private tour, please contact Listing Broker directly.

Exclusive Listing Broker

Gloria Touch
Direct: 206.971.0625
Mobile: 206.931.2267
gloria@cannoncommercial.com