

A photograph of a modern interior space. The walls are covered in light-colored wood paneling. A mobile sculpture with several dark, teardrop-shaped pieces hanging from thin wires is visible in the upper left. In the foreground, there is a glass railing and a glass wall. The text "26 EAST 78TH STREET" is overlaid in large white letters. Below it, "UPPER EAST SIDE" is written in smaller white letters. At the bottom, "LESLIE GARFIELD" is written in white letters.

26 EAST 78TH STREET

UPPER EAST SIDE

LESLIE
GARFIELD

Newly Renovated Townhouse Gallery Space

PRICE

Price Upon Request

NEIGHBORHOOD

Upper East Side

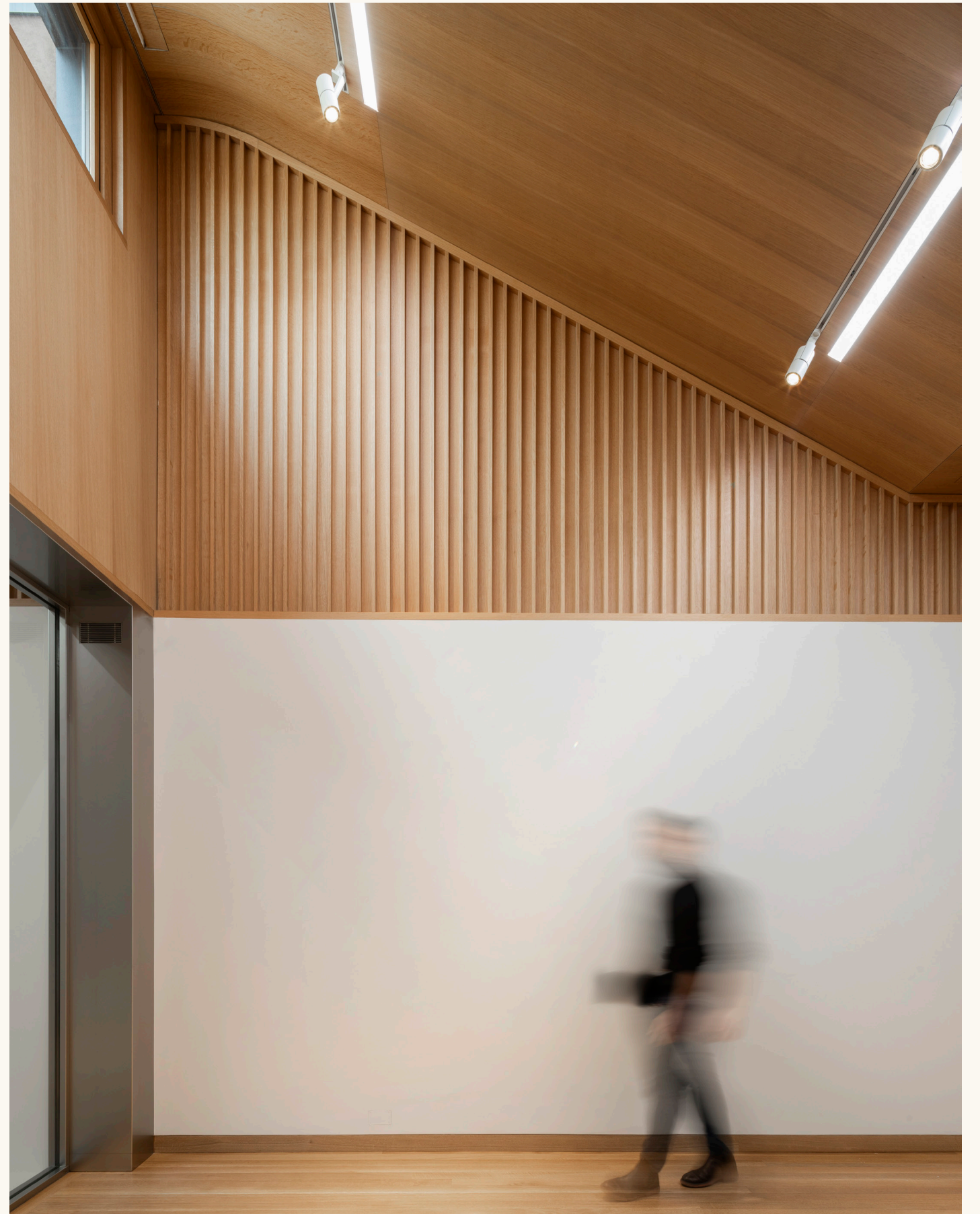
FEATURES

- + Newly Gut Renovated Townhouse
- + Commercial Use
- + Full Width Glass Elevator

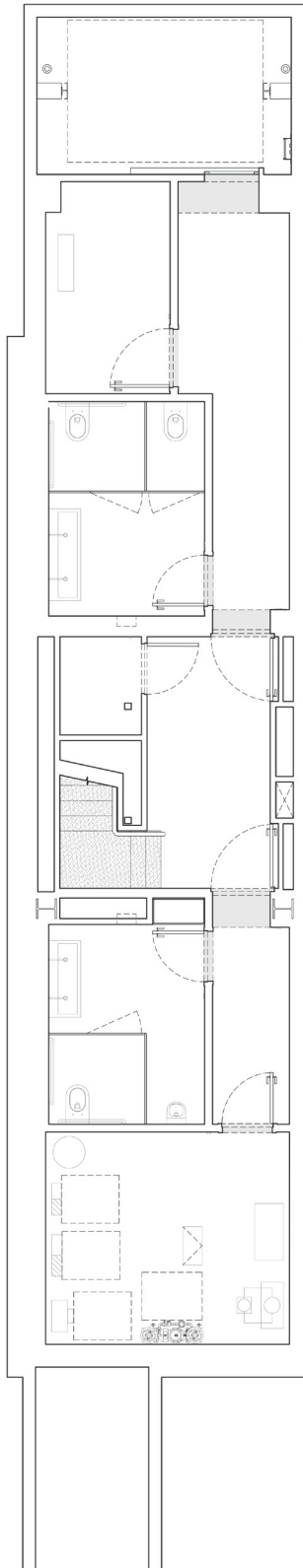
SUMMARY

Introducing 26 East 78th Street, a newly gut renovated commercial townhouse designed for art gallery use. Highlights of the renovation include a façade renovation, new stair, a 20' double-height lobby, roof monitors, and full-width glass elevator. The property is ideally located on 78th Street between Fifth Avenue and Madison Avenue within the museum mile of New York.

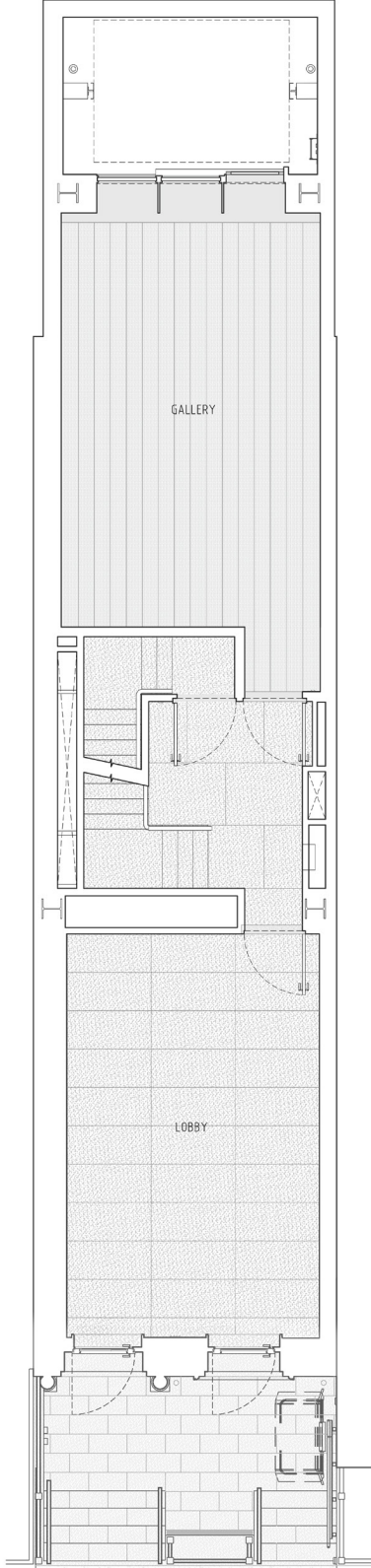




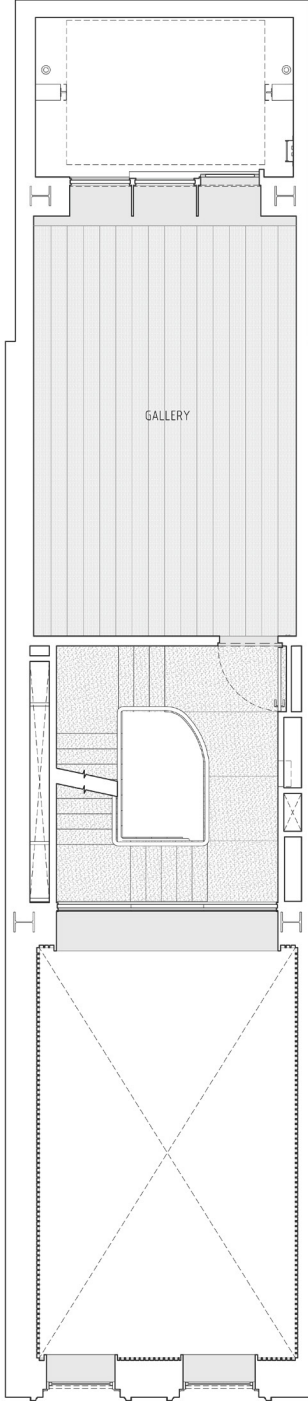
FLOORPLAN



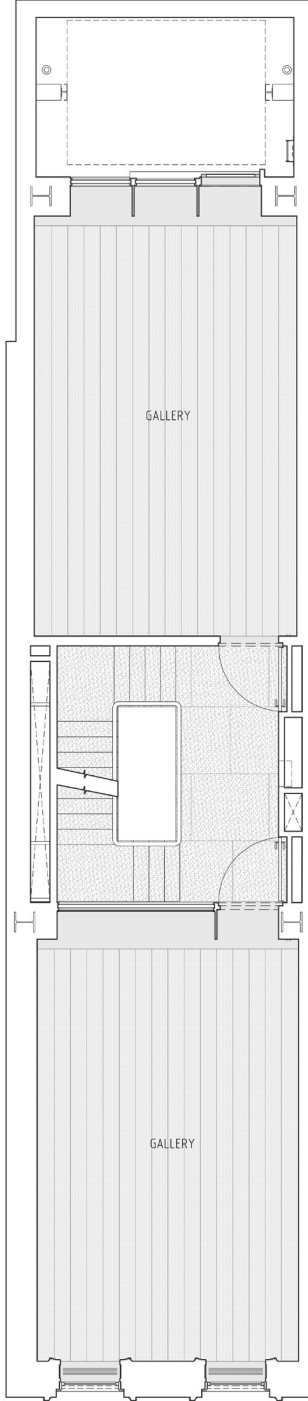
CELLAR



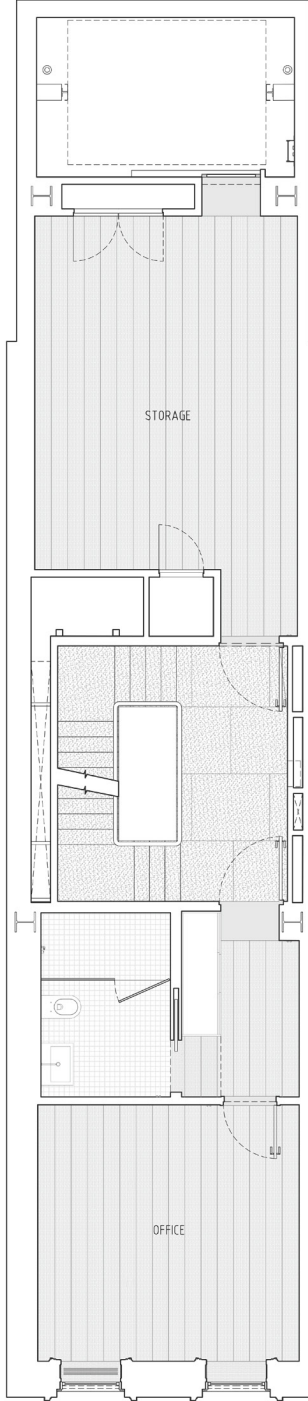
GROUND FLOOR



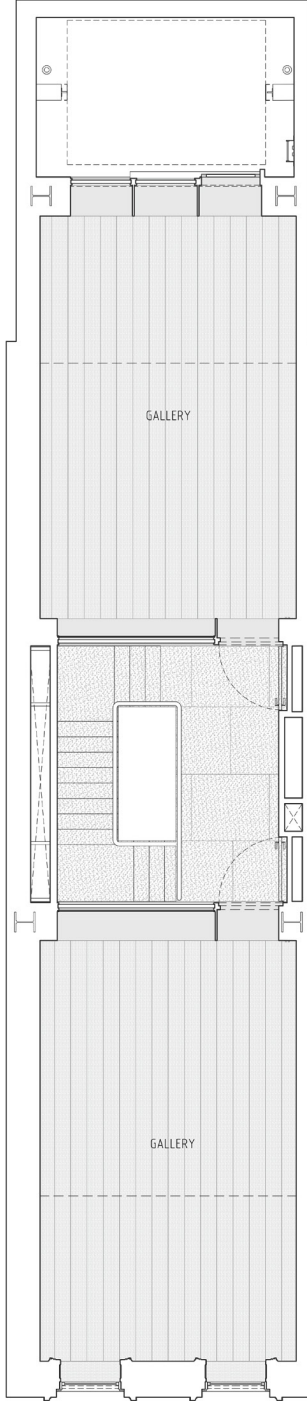
SECOND FLOOR



THIRD FLOOR



FOURTH FLOOR



FIFTH LEVEL

INQUIRE ABOUT THIS PROPERTY



Jed Garfield
212-574-6980
JHG@lesliegarfield.com



Caylyn Sullivan
212-574-6966
CS@lesliegarfield.com

LESLIE GARFIELD

Specializing in
New York City Townhouses

505 Park Ave. Suite 303
New York, NY 10022

+1 (212) 371 - 8200
lesliegarfield.com

122 Montague Street, 2nd Floor
Brooklyn, NY 11201



All information provided by us has been secured from sources we believe to be reliable, but we make no representations or warranties, expressed or implied, as to the accuracy of the information. References to square footage or age are approximate. Buyers must verify all information and bear the risk for any inaccuracies. Any projections, opinions, assumptions or estimates used herein are for example purposes only and do not represent the current or future performance of the property.