

# AMERICAN PLAZA II

FOR LEASE



## PROPERTY DETAILS

57 W. 200 S., Salt Lake City, UT 84101

- \$23.00/RSF Full Service
- Multiple Suites Available
  - » Entire fifth floor – up to 12,911 SF
- Common Area Improvements Underway
- Great CBD location- near TRAX stop
- Competitive tenant improvements available
- Parking in underground parking garage
- Additional covered parking available at Salt Palace Garage
- Next to Hilton Hotel, Hotel Monaco and numerous restaurants
- Across the street from the Capitol Theatre



**COLLIN PERKINS**  
cperkins@newmarkmw.com  
direct 801.604.0064  
[View Profile](#)

**SKYE GALLEY**  
sgalley@newmarkmw.com  
direct 801.971.3602  
[View Profile](#)

**FULL SERVICE  
COMMERCIAL REAL ESTATE**  
312 East South Temple  
Salt Lake City, Utah 84111  
Office 801.456.8800  
[www.newmarkmw.com](http://www.newmarkmw.com)



# AMERICAN PLAZA II



PROPERTY PHOTOS - SUITE 500 & MAIN ENTRANCE



**COLLIN PERKINS**  
cperkins@newmarkmw.com  
direct 801.604.0064  
[View Profile](#)

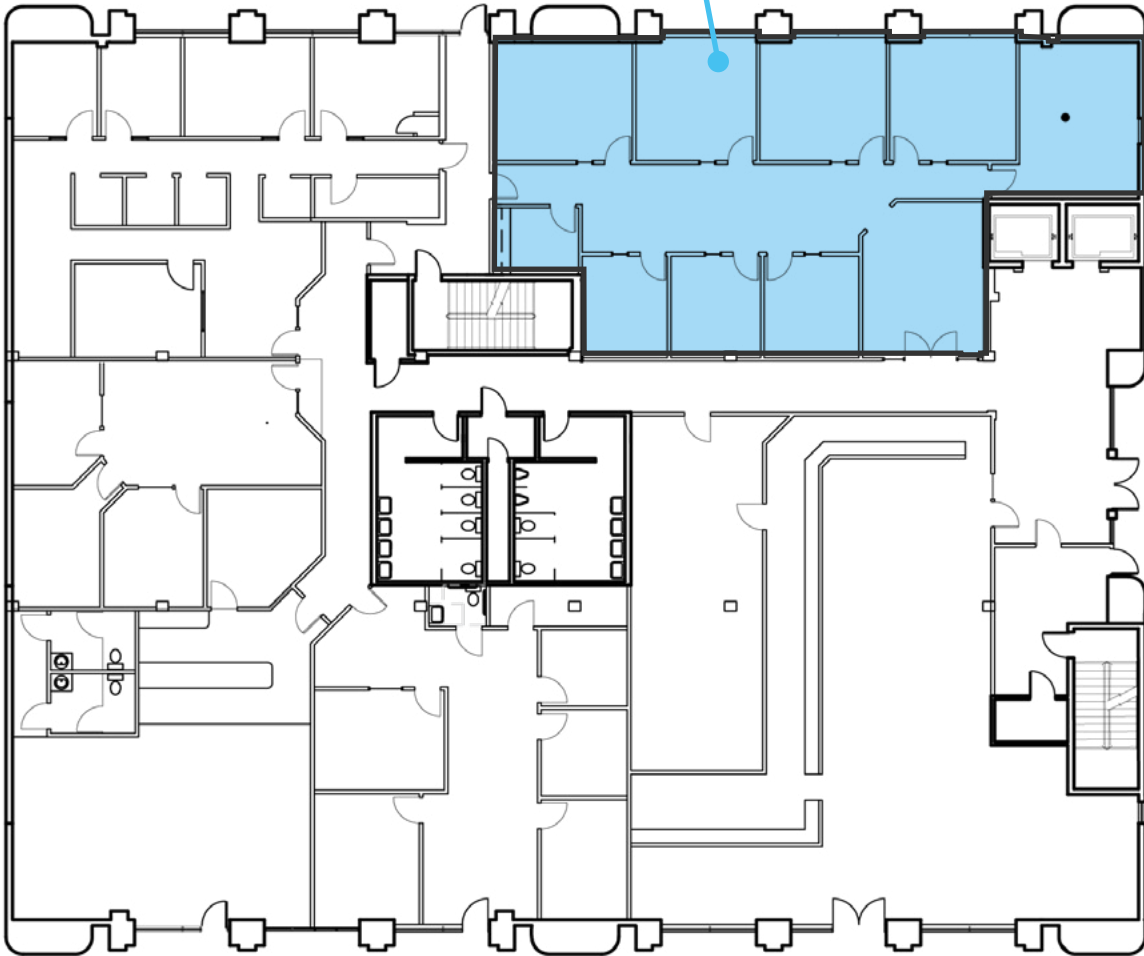
**SKYE GALLEY**  
sgalley@newmarkmw.com  
direct 801.971.3602  
[View Profile](#)

**FULL SERVICE  
COMMERCIAL REAL ESTATE**  
312 East South Temple  
Salt Lake City, Utah 84111  
Office 801.456.8800  
[www.newmarkmw.com](http://www.newmarkmw.com)

# AMERICAN PLAZA II

## LEVEL 1

**AVAILABLE**  
SUITE 101  
2,769 RSF



**COLLIN PERKINS**  
cperkins@newmarkmw.com  
direct 801.604.0064  
[View Profile](#)

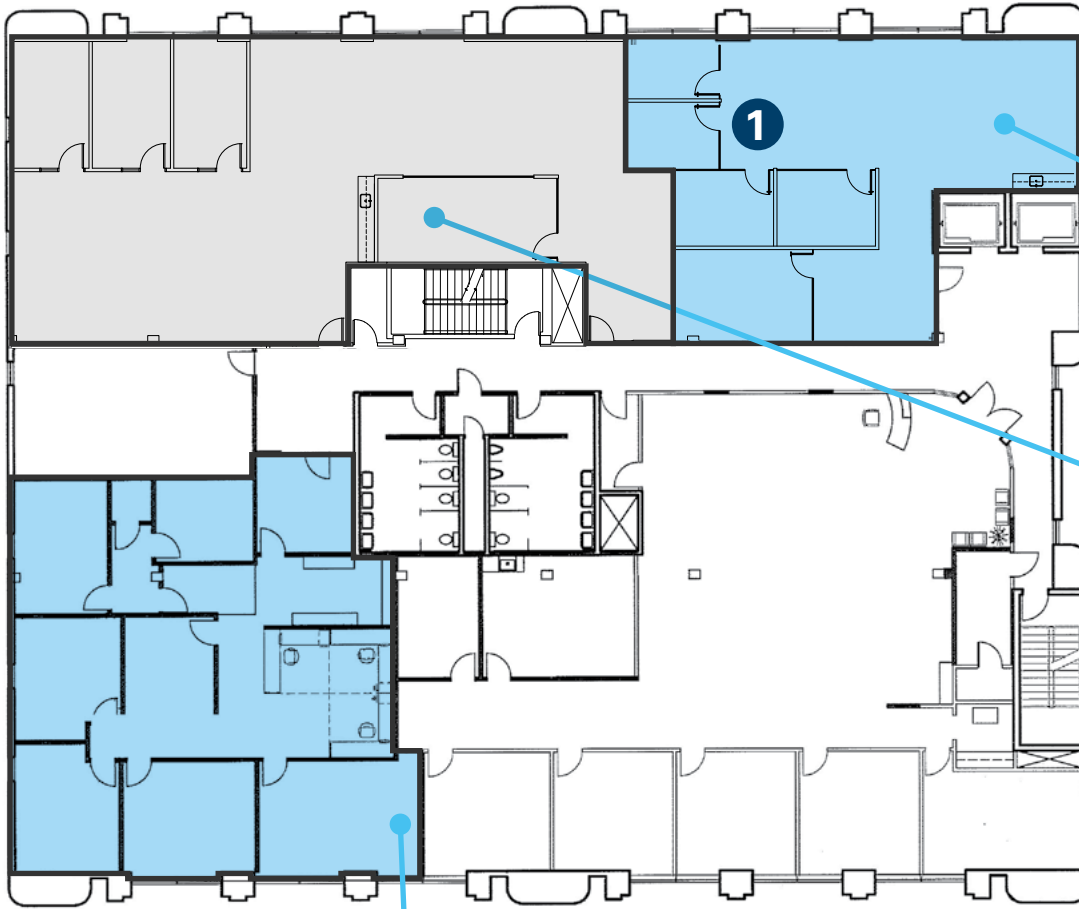
**SKYE GALLEY**  
sgalley@newmarkmw.com  
direct 801.971.3602  
[View Profile](#)

**FULL SERVICE  
COMMERCIAL REAL ESTATE**  
312 East South Temple  
Salt Lake City, Utah 84111  
Office 801.456.8800  
[www.newmarkmw.com](http://www.newmarkmw.com)



# AMERICAN PLAZA II

## LEVEL 2



### AVAILABLE SUITE 250 1,983 RSF

Polished concrete floors, exposed ceiling, ready to occupy

### AVAILABLE SUITE 260 3,200 RSF

### AVAILABLE SUITE 280 2,886 RSF



**COLLIN PERKINS**  
cperkins@newmarkmw.com  
direct 801.604.0064  
[View Profile](#)

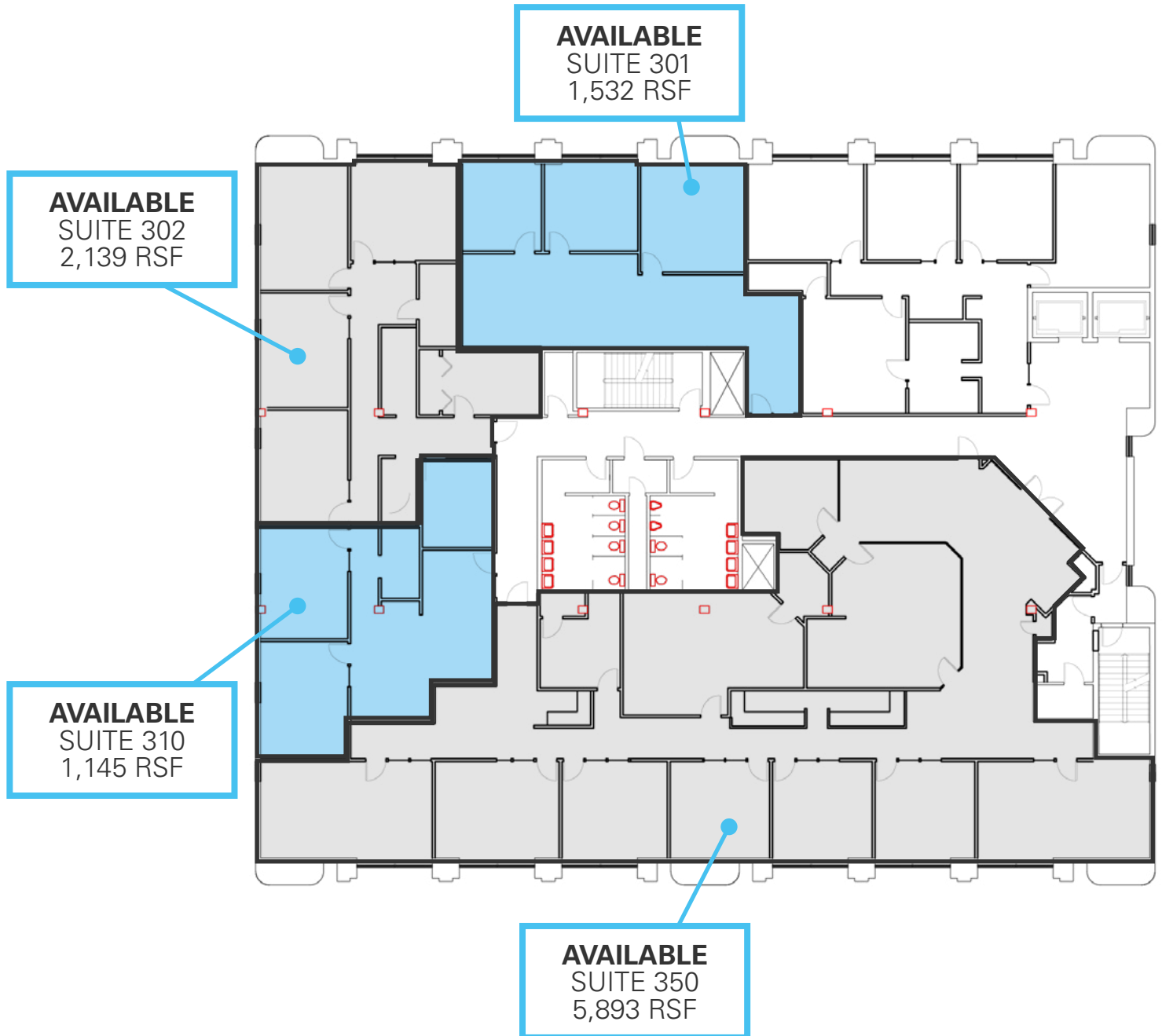
**SKYE GALLEY**  
sgalley@newmarkmw.com  
direct 801.971.3602  
[View Profile](#)

**FULL SERVICE  
COMMERCIAL REAL ESTATE**  
312 East South Temple  
Salt Lake City, Utah 84111  
Office 801.456.8800  
[www.newmarkmw.com](http://www.newmarkmw.com)

# AMERICAN PLAZA II

## LEVEL 3

**LEVEL 3  
CAN BE COMBINED  
10,709 RSF**



**COLLIN PERKINS**  
cperkins@newmarkmw.com  
direct 801.604.0064  
[View Profile](#)

**SKYE GALLEY**  
sgalley@newmarkmw.com  
direct 801.971.3602  
[View Profile](#)

**FULL SERVICE  
COMMERCIAL REAL ESTATE**  
312 East South Temple  
Salt Lake City, Utah 84111  
Office 801.456.8800  
[www.newmarkmw.com](http://www.newmarkmw.com)

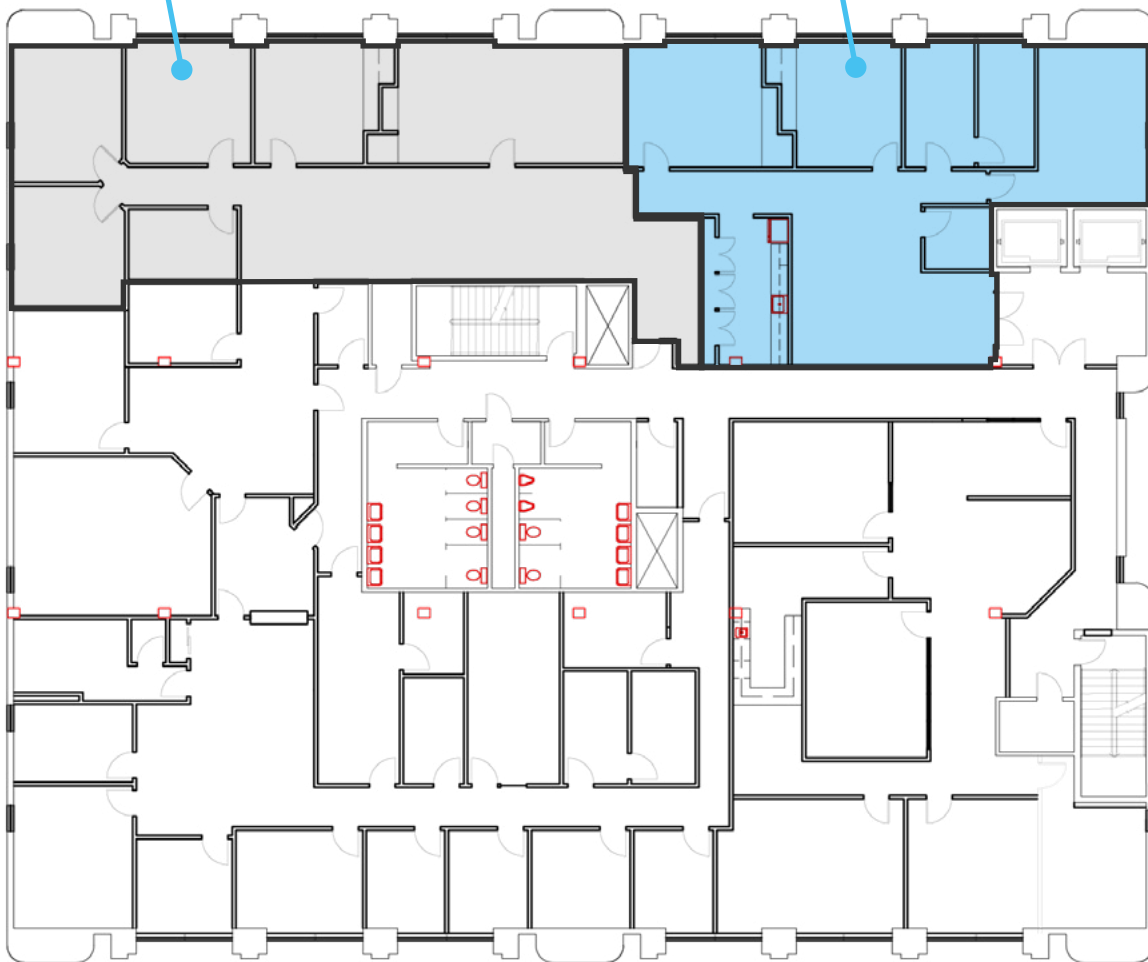
# AMERICAN PLAZA II

## LEVEL 4

**LEVEL 4  
CAN BE COMBINED**  
4,626 RSF

**AVAILABLE**  
SUITE 425  
2,540 RSF

**AVAILABLE**  
SUITE 404  
2,086 RSF



**COLLIN PERKINS**  
cperkins@newmarkmw.com  
direct 801.604.0064  
[View Profile](#)

**SKYE GALLEY**  
sgalley@newmarkmw.com  
direct 801.971.3602  
[View Profile](#)

**FULL SERVICE  
COMMERCIAL REAL ESTATE**  
312 East South Temple  
Salt Lake City, Utah 84111  
Office 801.456.8800  
[www.newmarkmw.com](http://www.newmarkmw.com)

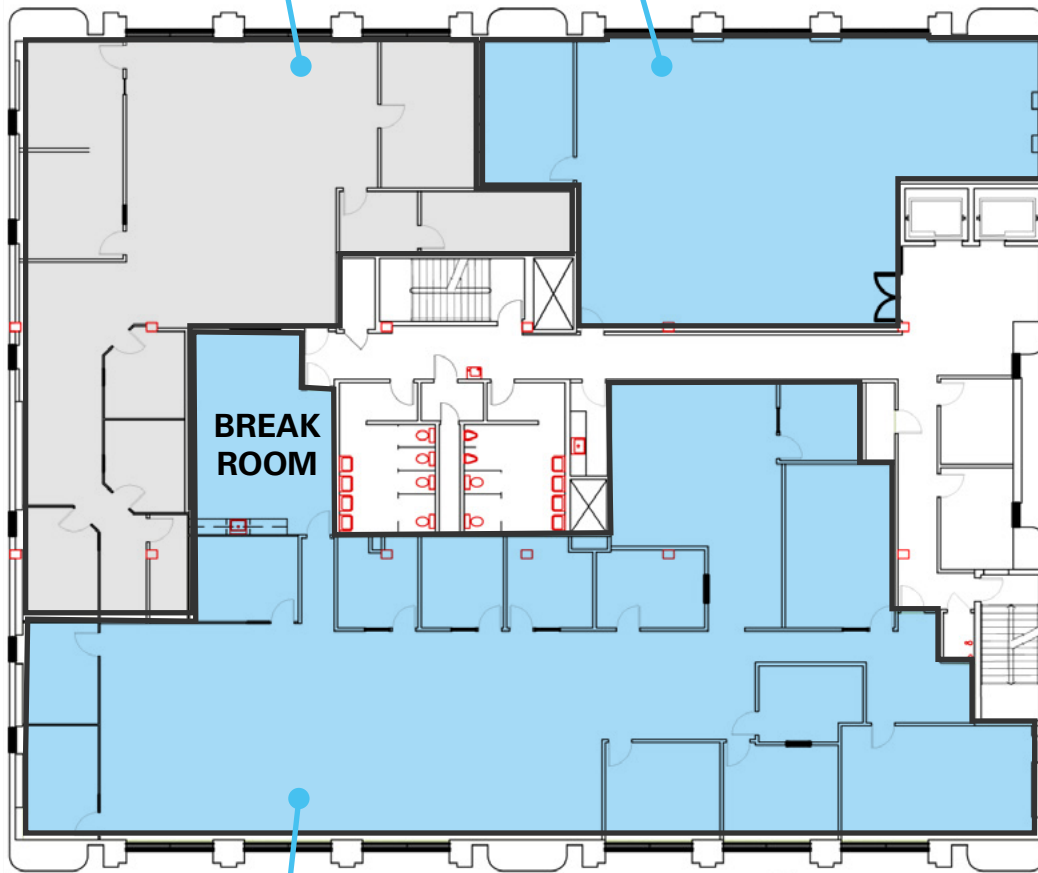
# AMERICAN PLAZA II

**LEVEL 5**

**LEVEL 5  
CAN BE COMBINED**  
12,911 RSF

**AVAILABLE**  
SUITE 525  
3,731 RSF

**AVAILABLE BUT UNDER  
LEASE TO GROUNDED  
THRU 5/31/2025**  
SUITE 550  
2,239 RSF



**AVAILABLE**  
SUITE 500  
6,941 RSF

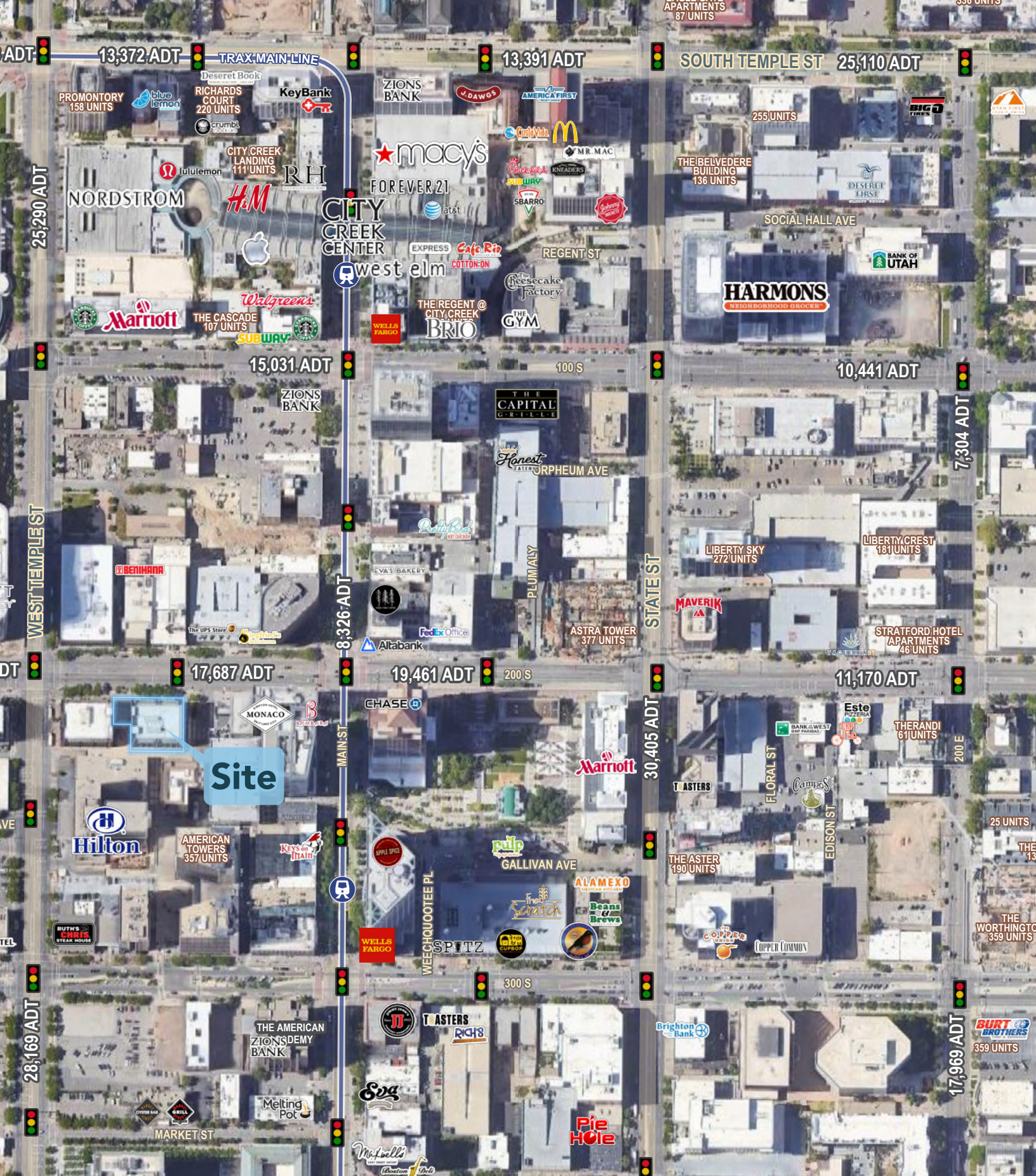


**COLLIN PERKINS**  
cperkins@newmarkmw.com  
direct 801.604.0064  
[View Profile](#)

**SKYE GALLEY**  
sgalley@newmarkmw.com  
direct 801.971.3602  
[View Profile](#)

**FULL SERVICE  
COMMERCIAL REAL ESTATE**  
312 East South Temple  
Salt Lake City, Utah 84111  
Office 801.456.8800  
[www.newmarkmw.com](http://www.newmarkmw.com)





**NEWMARK**  
MOUNTAIN WEST

**COLLIN PERKINS**  
cperkins@newmarkmw.com  
direct 801.604.0064  
[View Profile](#)

**SKYE GALLEY**  
sgalley@newmarkmw.com  
direct 801.971.3602  
[View Profile](#)

**FULL SERVICE  
COMMERCIAL REAL ESTATE**  
312 East South Temple  
Salt Lake City, Utah 84111  
Office 801.456.8800  
[www.newmarkmw.com](http://www.newmarkmw.com)