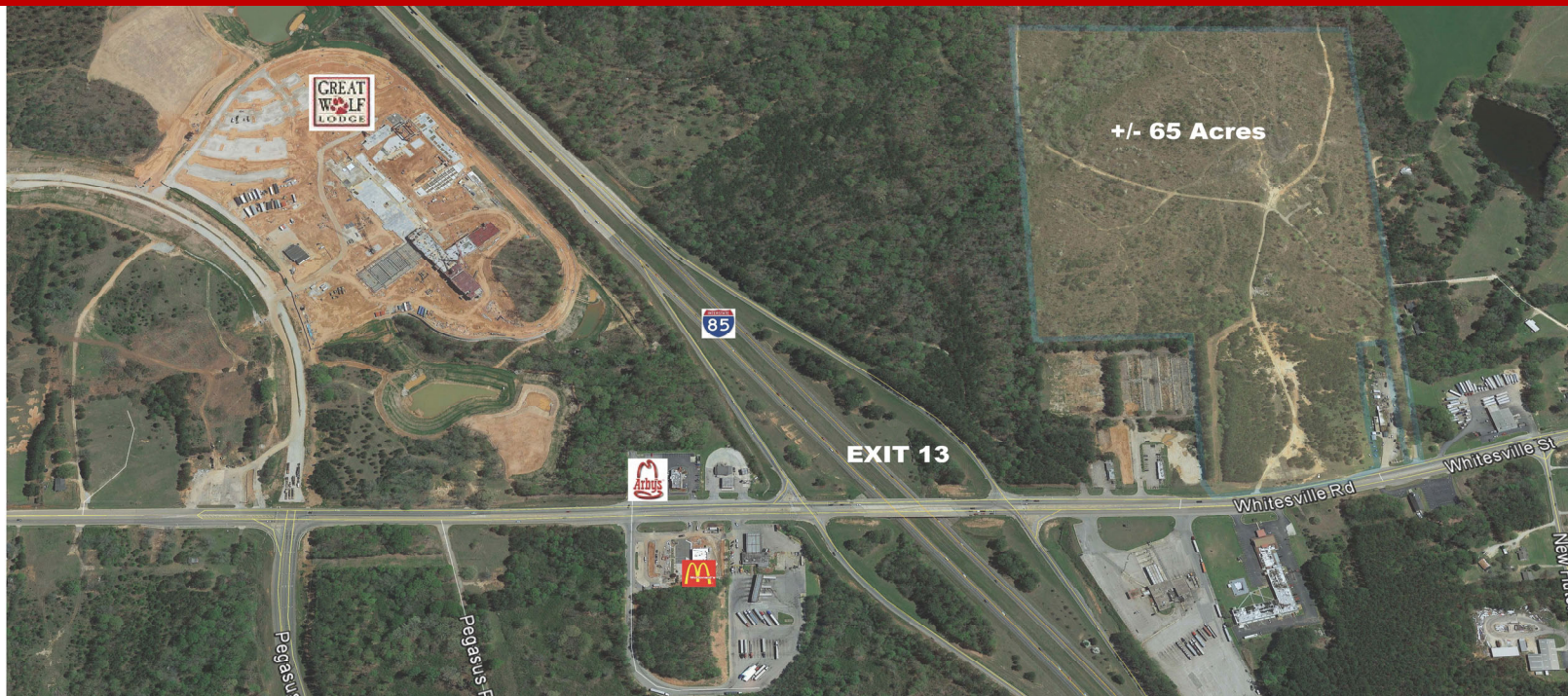


GA Highway 219 LaGrange, GA



For more information or to schedule a tour, please contact:

Craig Melton

Broker

706.298.0202 Office

334.559.4914 Cell

comprehensivecre@gmail.com

#

Along Whitesville Rd/ Highway 219

Highlights

- Across I-85 From Great Wolf Lodge
- GW expects 500K+ Visitors Per Year
- 35,000 VPD Along I-85 & 13,400 along 219
- At entrance to LaGrange Technology Park
Over 8,500 Employees
- Retail development site with great visibility
- Exit 13 Interchange is in the process of transformation.



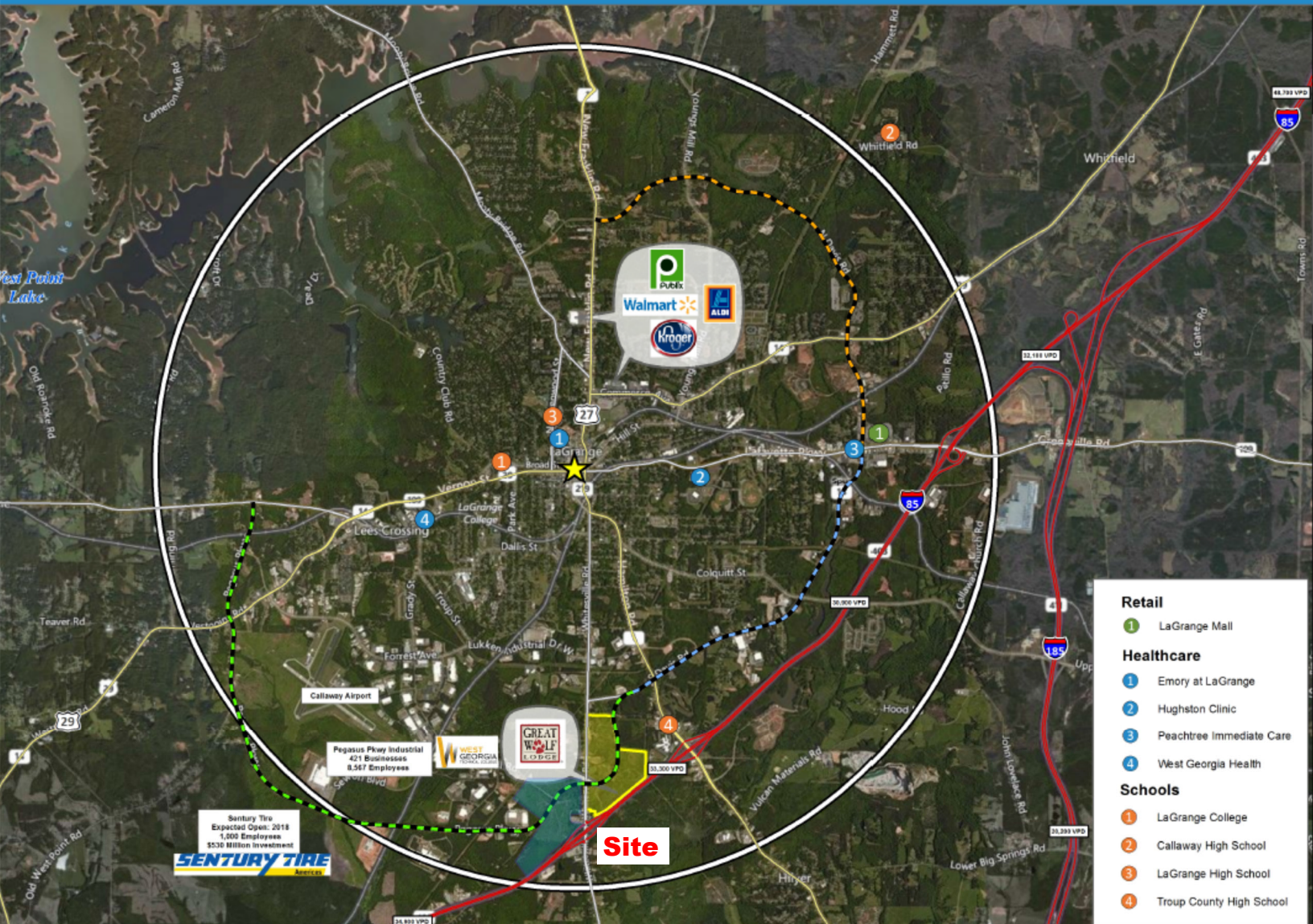
COMMERCIAL REAL ESTATE BROKERAGE

Cell 334.559.4914

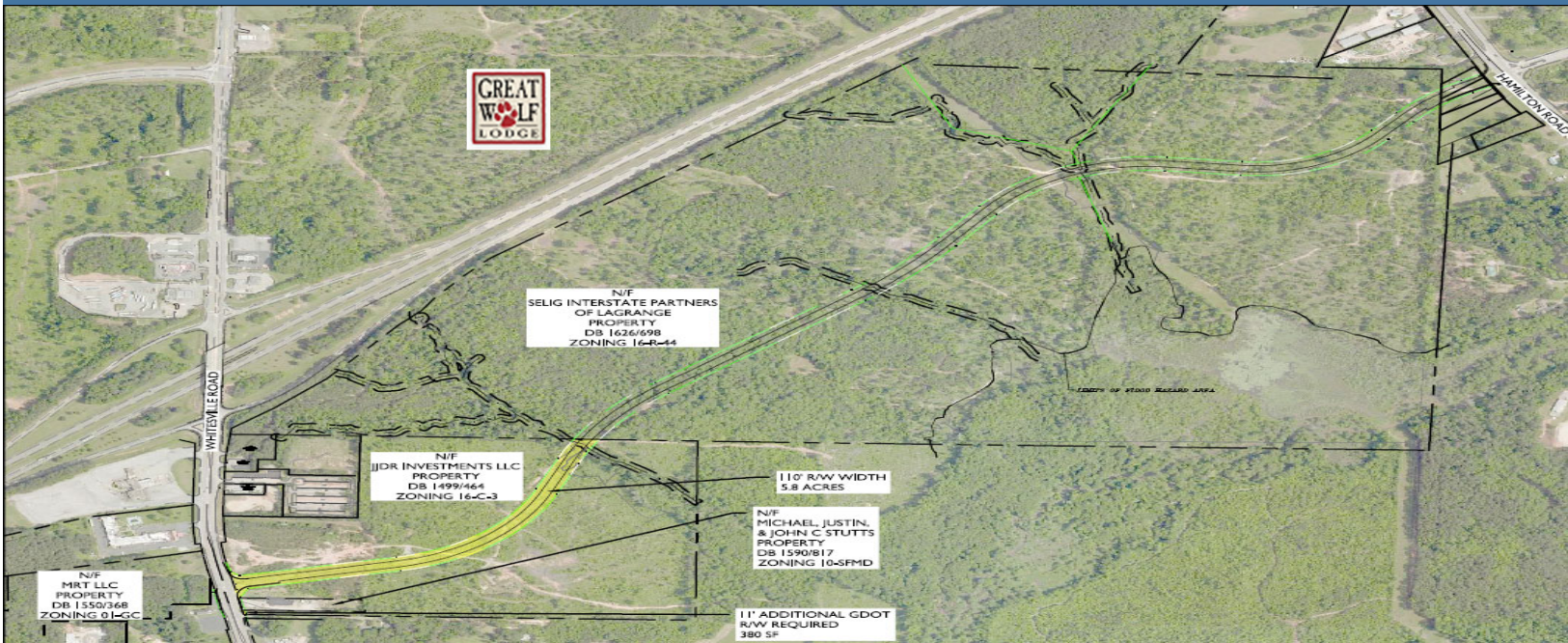
comprehensivecre@gmail.com

GA Highway 219 LaGrange, GA

LaGrange, GA

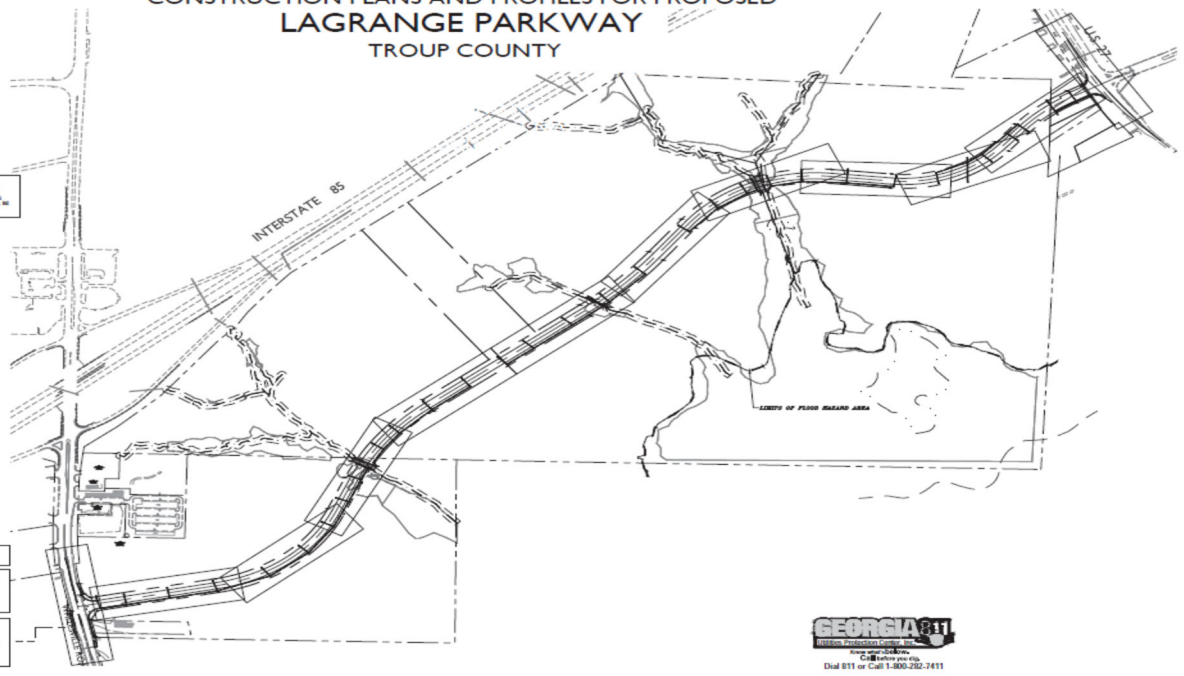


GA Highway 219 LaGrange, GA



AEC PROJECT NUMBER	SHEET NO.	TOTAL SHEETS
15-3801.20	1	136

CONSTRUCTION PLANS AND PROFILES FOR PROPOSED LAGRANGE PARKWAY TROUP COUNTY



CAUTION:
THE LINES SHOWN ARE SHOWN FOR THE CONTRACTOR'S CONSIDERATION ONLY. THERE MAY BE OTHER LINES NOT SHOWN ON THESE PLANS. THE CONTRACTOR SHALL BE RESPONSIBLE FOR THE LOCATION OF ALL UTILITIES WITHIN THE LIMITS OF THE WORK. ALL DAMAGES MADE TO EXISTING UTILITIES BY THE CONTRACTOR SHALL BE THE SOLE RESPONSIBILITY OF THE CONTRACTOR.

24-HOUR ERO. CONTROL CONTACT:
TBD
PHONE TBD
CONVOY LEVEL, @TBD EXP. TBD

OWNER REPRESENTATIVE CONTACT:
SELIG ENTERPRISES, INC.
1100 SPRING STREET NW, STE 550
ATLANTA, GA 30309-2848
BONNIE DEAN
(404) 875-2629

DESIGN SPEED: 40 MPH
SPEED LIMIT: 35 MPH 85% DESIGN SPEED
THIS PROJECT IS LOCATED WITHIN TROUP COUNTY, LAND LOTS 302, 303, 304, 213, 214, 8TH DISTRICT, 1ST SECTION.

NOTE: ALL WORK TO BE DONE IN ACCORDANCE WITH THE STANDARD SPECIFICATIONS OF THE DEPARTMENT OF TRANSPORTATION OF GEORGIA (STANDARD SPECIFICATIONS FOR THE CONSTRUCTION OF ROADS AND BRIDGES, CURRENT ENGLISH EDITION, AND SUPPLEMENTS THEREIN, AS APPROVED BY THE FEDERAL HIGHWAY ADMINISTRATION).

THE DATA, TOGETHER WITH ALL OTHER INFORMATION SHOWN ON THESE PLANS, OR IN ANY WAY INDICATED THEREBY, WHETHER BY DRAWINGS OR NOTES, OR IN ANY OTHER MANNER, ARE BASED UPON FIELD INVESTIGATIONS AND ARE BELIEVED TO BE INDICATIVE OF ACTUAL CONDITIONS. HOWEVER, THE SAME ARE SHOWN AS INFORMATION ONLY, ARE NOT GUARANTEED.



AEC, INC.
50 WARM SPRINGS CIRCLE
ROSWELL, GA 30075
770-641-1942



DATE	REVISIONS	DATE	REVISIONS
10/04/13	80% SET		
11/23/13	INITIAL SUBMITTAL TO CITY/COUNTY		
3/14/14	COORD. RESUBMITTAL		

TROUP COUNTY, GA
LAGRANGE STATION PARKWAY
COVER

01-001