



Bright, Compact Office Space for SubLease

210 - 4252 Commerce Circle
Victoria, BC

Tristan Spark
Vice President
+1 250 414 8391
tristan.spark@colliers.com



Centrally located **Office Space** in the Royal Oak area, making it very accessible to all of Greater Victoria.

Unit 210

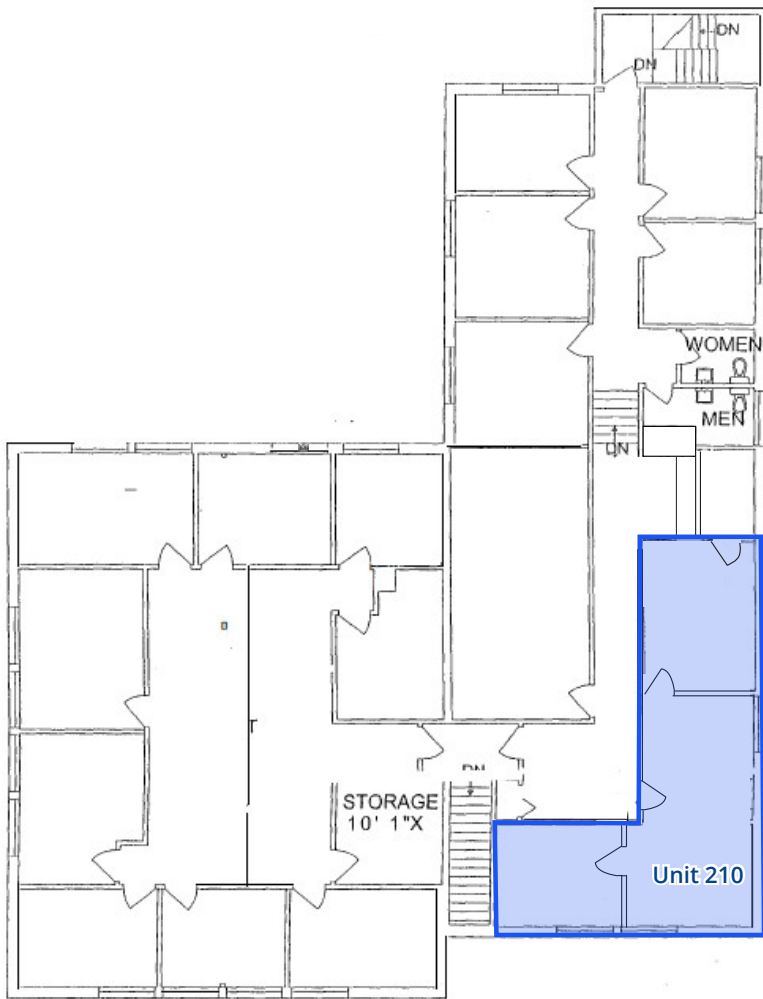
Lease Space Second floor 768 SF

Net Rent \$18.00 PSF/annum

Additional Rent \$11.54 PSF (2023 est.)

Availability Immediately

Sublease Term Until October 31, 2028, but new head-lease term negotiable



For further information on this opportunity please contact **Tristan Spark**

This document has been prepared by Colliers for advertising and general information only. Colliers makes no guarantees, representations or warranties of any kind, expressed or implied, regarding the information including, but not limited to, warranties of content, accuracy and reliability. Any interested party should undertake their own inquiries as to the accuracy of the information. Colliers excludes unequivocally all inferred or implied terms, conditions and warranties arising out of this document and excludes all liability for loss and damages arising there from. This publication is the copyrighted property of Colliers and/or its licensor(s). Copyright © 2024 Colliers Macaulay Nicolls Inc. All rights reserved. This communication is not intended to cause or induce breach of an existing listing agreement.