

FOR SALE
\$925,000

PRICE REDUCED



403-405 N. 2ND STREET
HARRISBURG, PA 17101

PROPERTY HIGHLIGHTS

- 23 private parking spaces in the attached gated garage
- Layout offers an inviting workspace filled with private offices and collaborative work areas
- Modern finishes & glass walls create natural light throughout the second floor

OFFERING SUMMARY

Sale Price:	\$925,000
Lot Size:	.06 Acres
Building Size:	±10,000 RSF

BUILDING INFORMATION

Address:	403 N. 2nd Street, Harrisburg, PA 17101
Municipality:	City of Harrisburg
County:	Dauphin
Tax Parcels:	04-018-037, 04-018-036
Year Built:	1975/Renovated in 2022
Zoning:	Commercial Neighborhood
# of Floors:	2
Restrooms:	4
Ceiling Height:	8.0'
Basement	Yes
Lighting:	Fluorescent, incandescent
Water & Sewer:	Harrisburg City
Electric:	3 phase, 225 amp
Flood Zone:	No

LOCATION DESCRIPTION

In the center of Harrisburg's Business District, the property is footsteps away from the State Capitol Complex, restaurants, various businesses, and government offices. Located in Harrisburg City, minutes from I-81 and I-83.



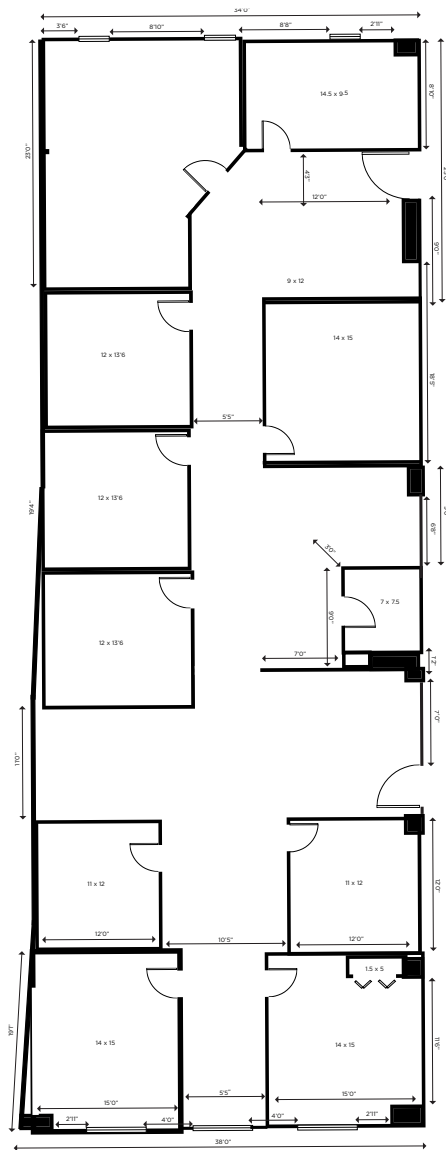
403-405 N. 2ND STREET | HARRISBURG, PA 17101

PROPERTY IMAGES

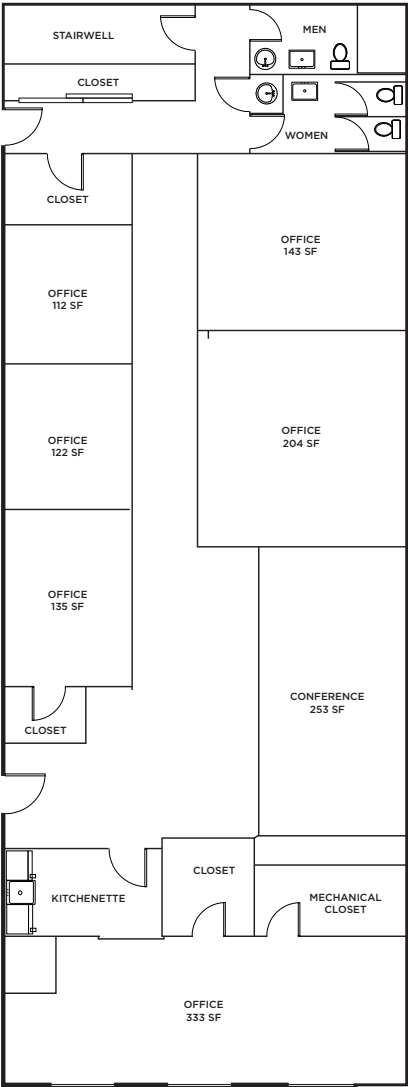


FLOOR PLAN

SUITE 200



SUITE 201





CONTACT INFORMATION

JASON SOURBEER

Brokerage Services Group
Director
+1 717 231 7451
jason.sourbeer@cushwake.com
PA License RS302230



4423 North Front Street
Harrisburg, PA 17110 | USA
cushmanwakefield.com

©2025 Cushman & Wakefield. All rights reserved. The information contained in this communication is strictly confidential. This information has been obtained from sources believed to be reliable but has not been verified. NO WARRANTY OR REPRESENTATION, EXPRESS OR IMPLIED, IS MADE AS TO THE CONDITION OF THE PROPERTY (OR PROPERTIES) REFERENCED HEREIN OR AS TO THE ACCURACY OR COMPLETENESS OF THE INFORMATION CONTAINED HEREIN, AND SAME IS SUBMITTED SUBJECT TO ERRORS, OMISSIONS, CHANGE OF PRICE, RENTAL OR OTHER CONDITIONS, WITHDRAWAL WITHOUT NOTICE, AND TO ANY SPECIAL LISTING CONDITIONS IMPOSED BY THE PROPERTY OWNER(S). ANY PROJECTIONS, OPINIONS OR ESTIMATES ARE SUBJECT TO UNCERTAINTY AND DO NOT SIGNIFY CURRENT OR FUTURE PROPERTY PERFORMANCE.